

Development in the LAJ attendance boundary

Attendance Boundary Change for Lake Asbury and Lakeside Junior High Schools (proposed)

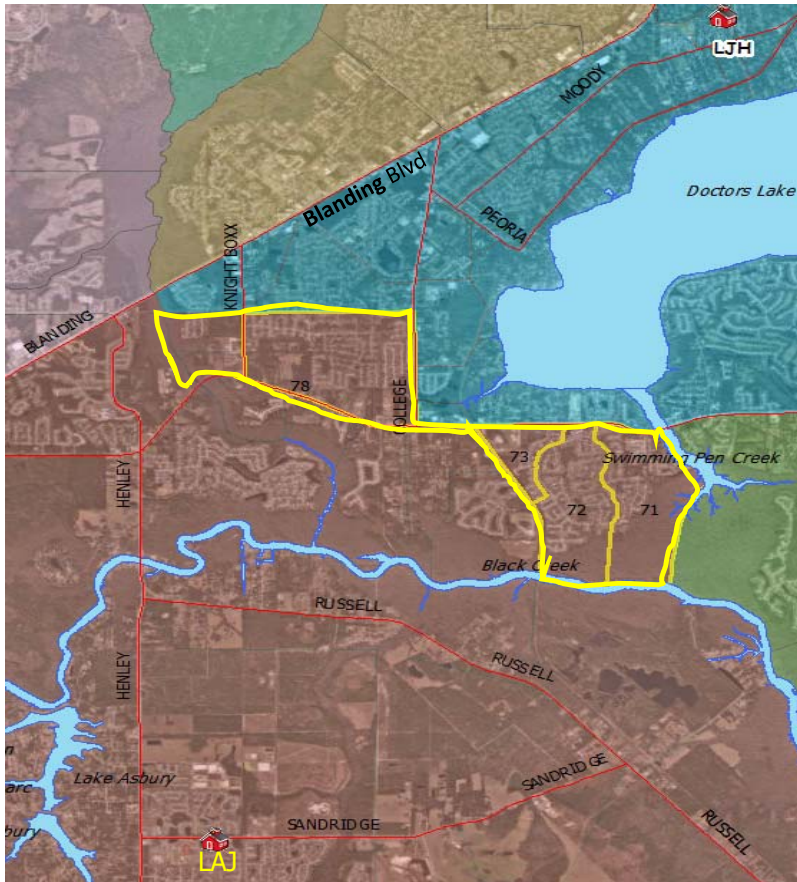
Current:	LAJ 73% (Projected growth \approx 360) LJH 64% (400 \approx available capacity)	ESE factor: LAJ 88%
Status Quo:	LAJ 113% (Growing)	ESE factor: LAJ 117%
Remedy:	Areas to LJH \approx 190 students	
Result:	LAJ 64% LJH 80%	ESE factor: LAJ 77%

Development in Lake Asbury

- 1) Cross Creek
- 2) Avonlea Hills
- 3) Rolling Hills
- 4) Royal Pointe
- 5) Village Park
- 6) Creek View Trail
- 7) Annabel Island Phase 1
- 8) Reinhold North

Attendance Boundary Change LAJ and LJJ

Current Area:
LAJ Maroon, LJJ Blue

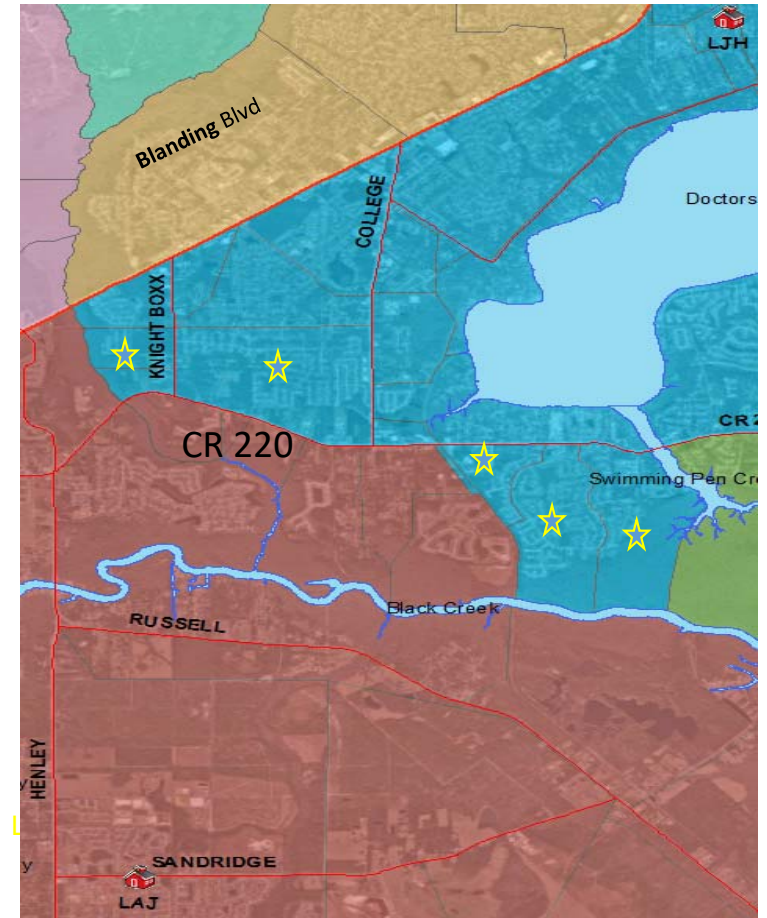


Neighborhoods to LJJ

- Wedgefield
- Orange Park South
- Breckenridge
- Madison Commons
- Greenwood Estates

Proposed Area

South of CR 220, CSX east to Swimming Pen Creek
North of CR 220, West of College Dr. past Knight Box



Attendance Boundary Change LAJ and LJH (proposed)

