

Attendance Boundary Change for OakLeaf and Ridgeview High Schools (proposed)

Nearby Neighborhoods to RHS

- Pine Ridge
- Two Creeks (South of Tynes Blvd)
- Fox Meadow
- Whisper Creek

Current: OHS 106 % (Projected growth \approx 230)
RHS 67% (730 \approx available capacity)

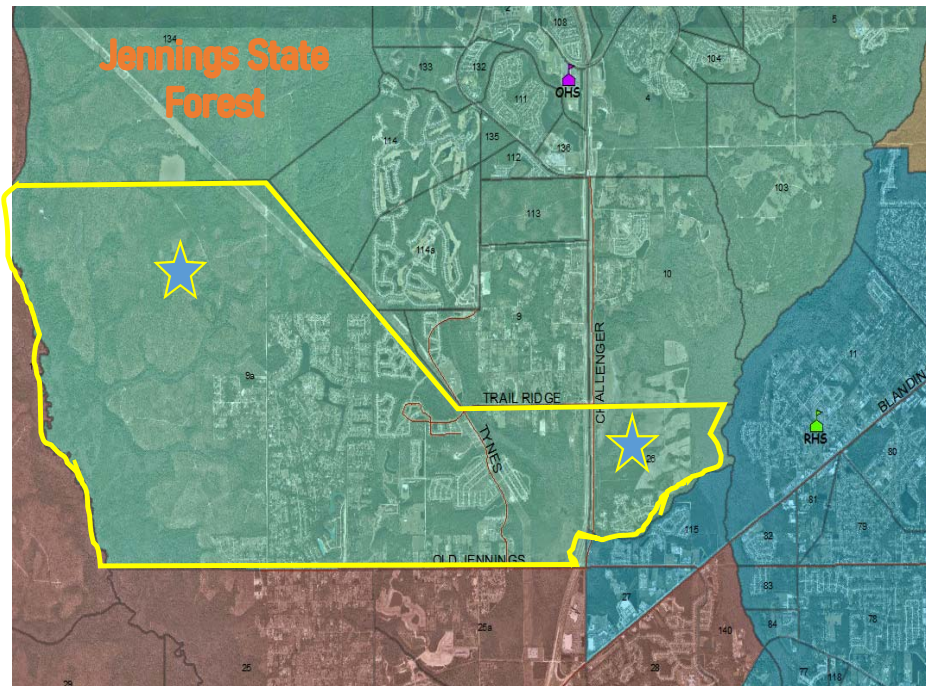
Status Quo: OHS 115 % (growing)
RHS 67%

**note: Students currently transported to OHS (6.2 miles)
will also be transported to RHS (5.4 miles)*

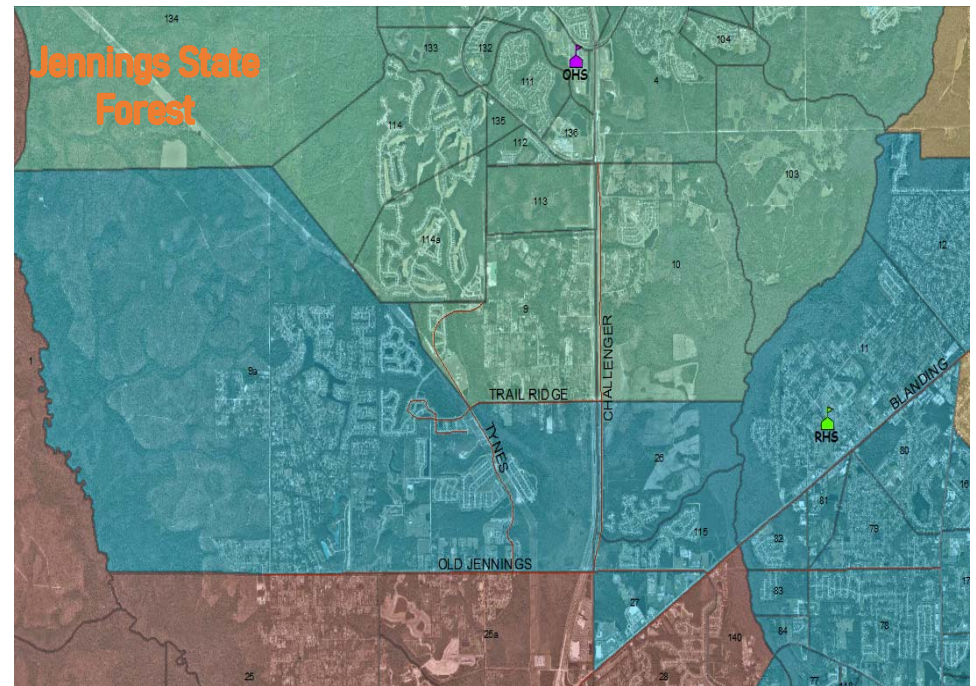
Remedy: OHS southern neighborhoods
to RHS \approx 360 students

Result: OHS 92% (allows for growth)
RHS 84%

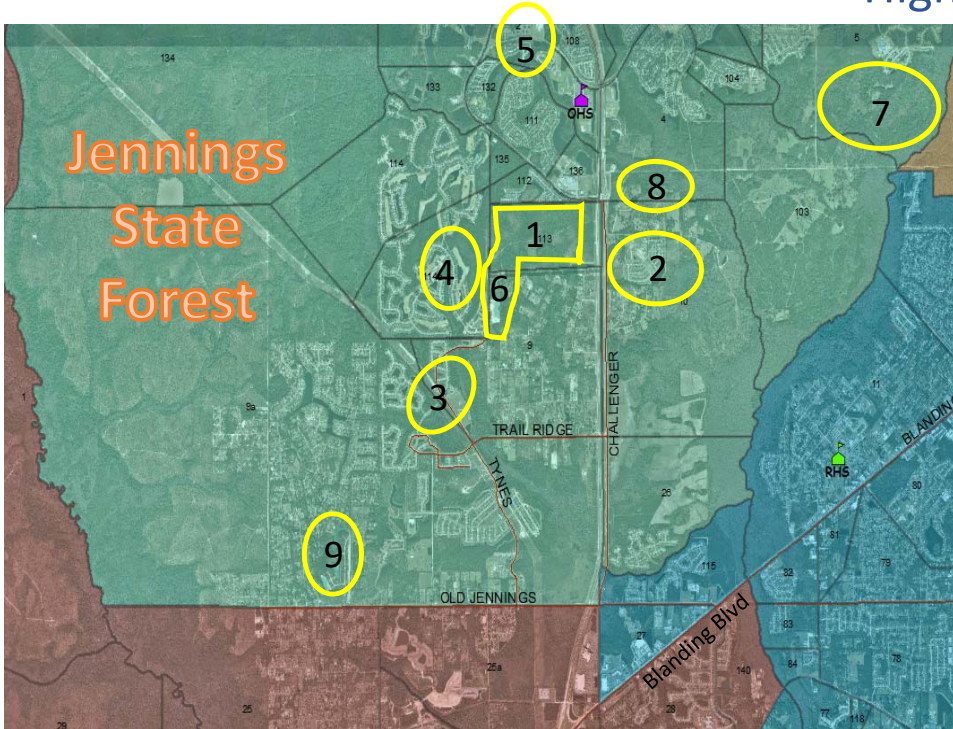
Current Attendance Boundary



Proposed Attendance Boundary



Attendance Boundary change for Oakleaf and Ridgeview High Schools (proposed)



Current:	OHS 106 % (Projected growth \approx 230) RHS 67% (730 \approx available capacity)
Status Quo:	OHS 115 % (growing) RHS 67%
Remedy:	Areas to RHS \approx 360 students
Result:	OHS 92% RHS 84%

Development (OHS)

- 1) Grey Hawk
- 2) Kindewood
- 3) Pine Ridge
- 4) Eagle Landing
- 5) Arbor Mill
- 6) Oakland Hills
- 7) Wilford Preserve
- 8) Cameron Oaks
- 9) Fox Meadow unit 8A

Neighborhoods to RHS

- Pine Ridge
- Two Creeks
- Fox Meadow
- Whisper Creek