

# Boundary Change for Tynes and Coppergate Elementary Schools (proposed)

**Current:** TES 93% (Projected growth)  
CGE 74% (180 ≈ available capacity)

**Status Quo:** TES 120%  
CGE 74%

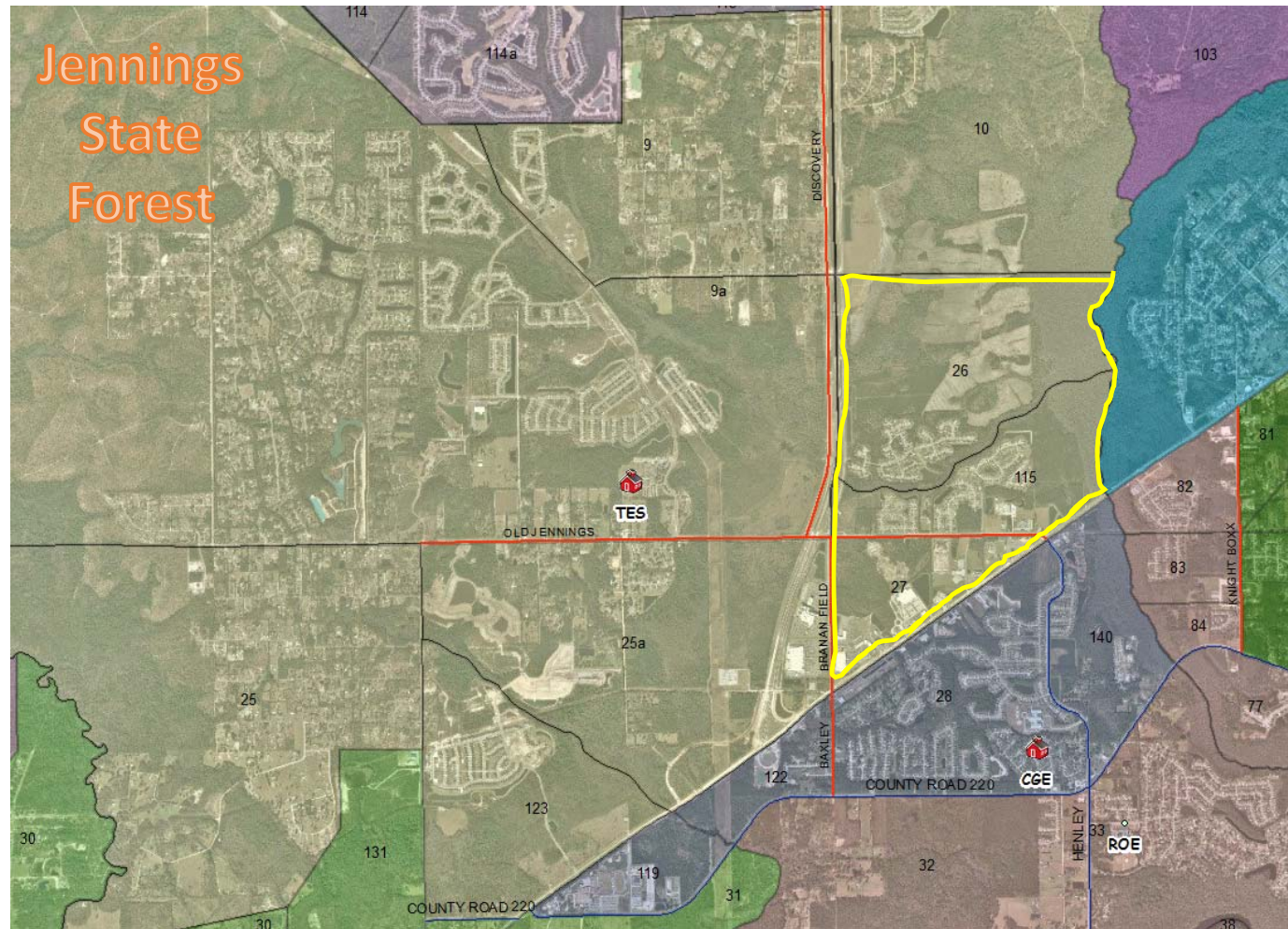
**Remedy:** Areas to CGE ≈ 150 students

**Result:** TES 82% (*allows for growth*)  
CGE 92%

## Neighborhoods to GCE

- *Summer Brook*
- *Branan Mill Plantation*
- *Whisper Creek*

*\*note: Students currently transported to TES (2.5 miles)  
will also be transported to CGE (3.1 miles)*



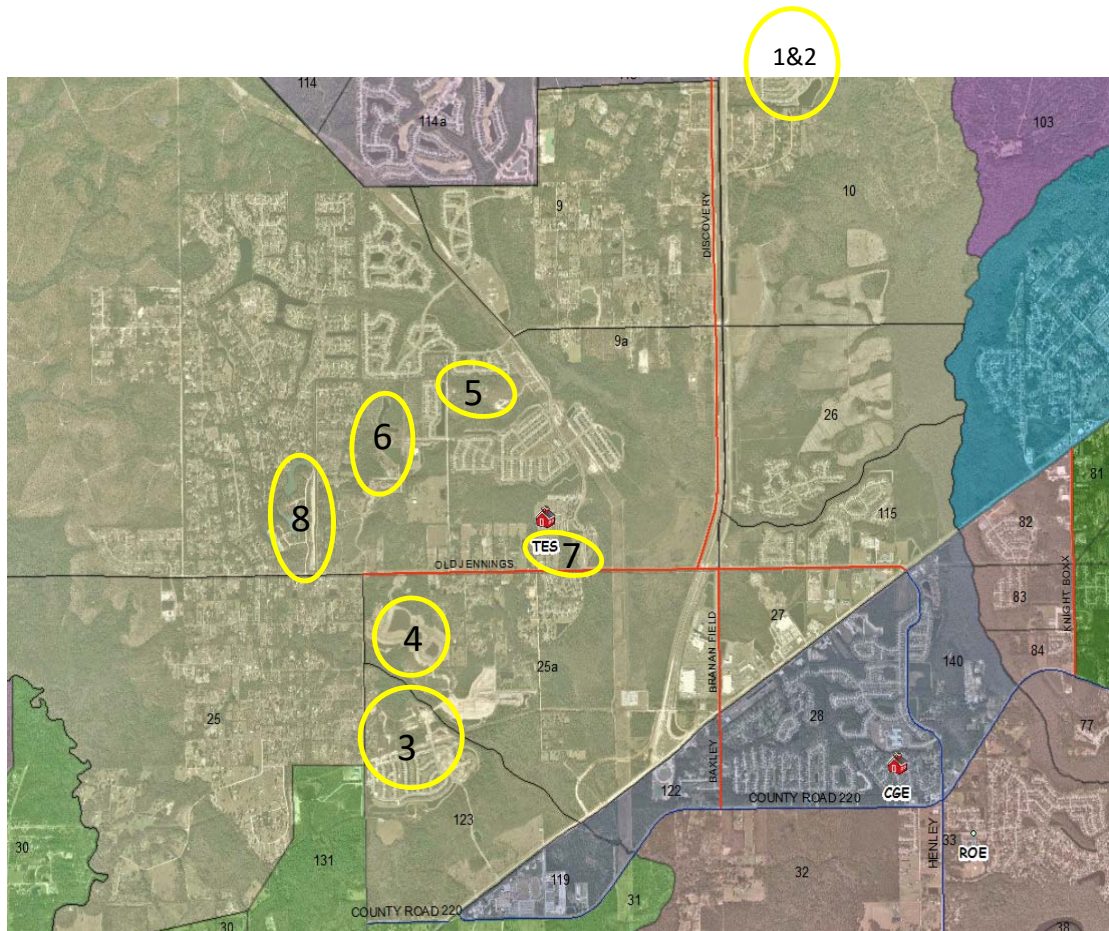
# Boundary Change for Tynes and Coppergate Elementary Schools (proposed)

**Current:** TES 104% (Projected growth ≈ 158)  
CGE 74% (180 ≈ available capacity)

**Status Quo:** TES 120%  
CGE 74%

**Remedy:** Areas to CGE ≈ 150 students

**Result:** TES 85% (*allows for growth*)  
CGE 92%



- Development in the area**
- 1) Cameron Oaks
  - 2) Kindlewood
  - 3) Azalea Ridge
  - 4) Linda Lakes
  - 5) Pine Ridge
  - 6) Pine Ridge West
  - 7) Apartments (unnamed)
  - 8) Fox meadow unit 8A



# Boundary Change for Tynes and Coppergate Elementary Schools (proposed)

Current boundary:

Proposed boundary:

