

# Growth and Attendance Boundary Workshop

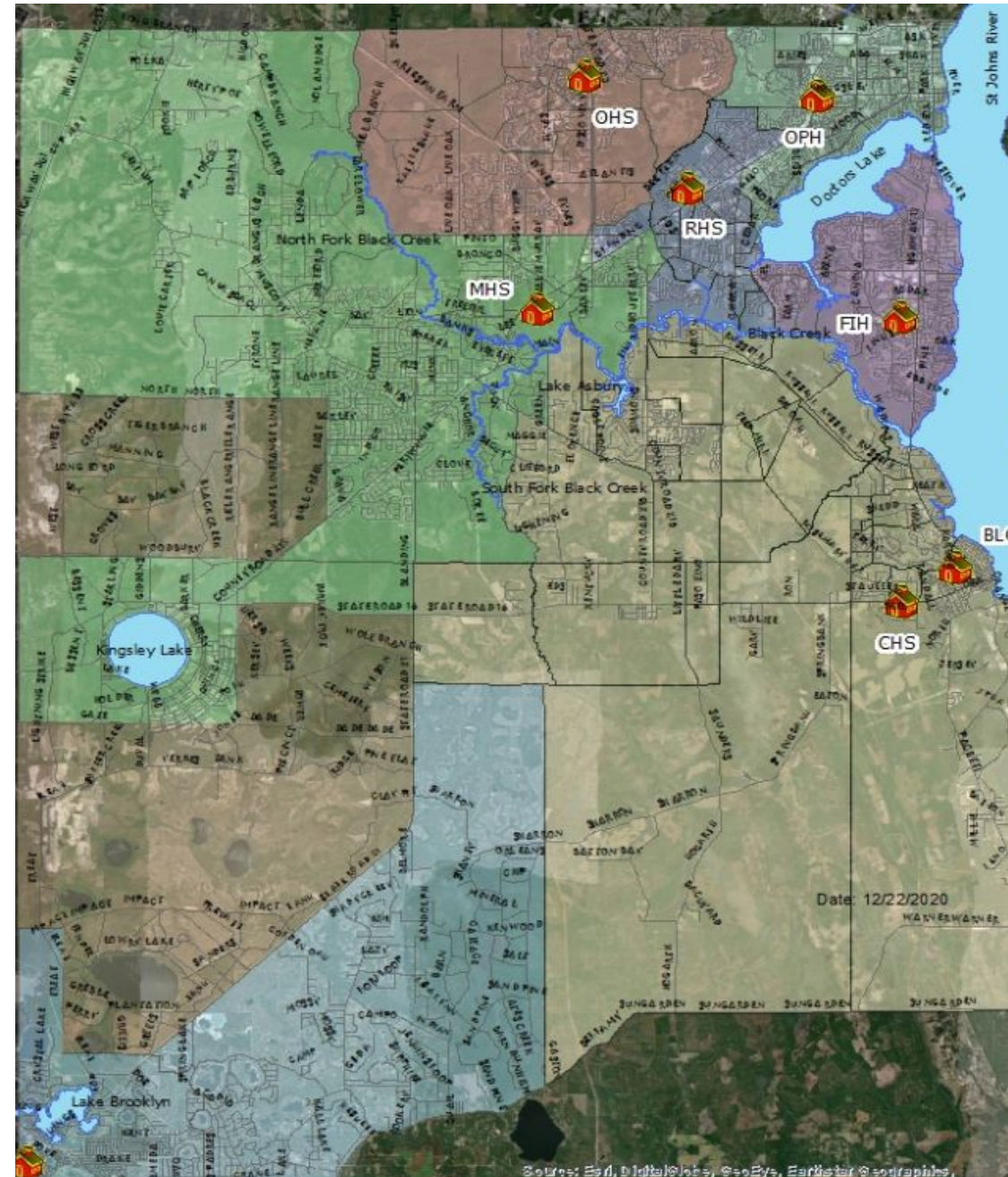
## Workshop Focus

- High School: OHS
- Junior High: LAJ
- Elementary Schools: TES, PES and LAE
- Elementary “R”

## OHS Study

High School	Percent Capacity
Clay High	79%
Fleming Island HS	85%
Keystone Sr/Jr	82%
Oakleaf HS	106%
Orange Park HS	65%
Ridgeview HS	67%
Middleburg HS (cafeteria)	98% 71%

## Senior High School Attendance Boundaries (all HS current)



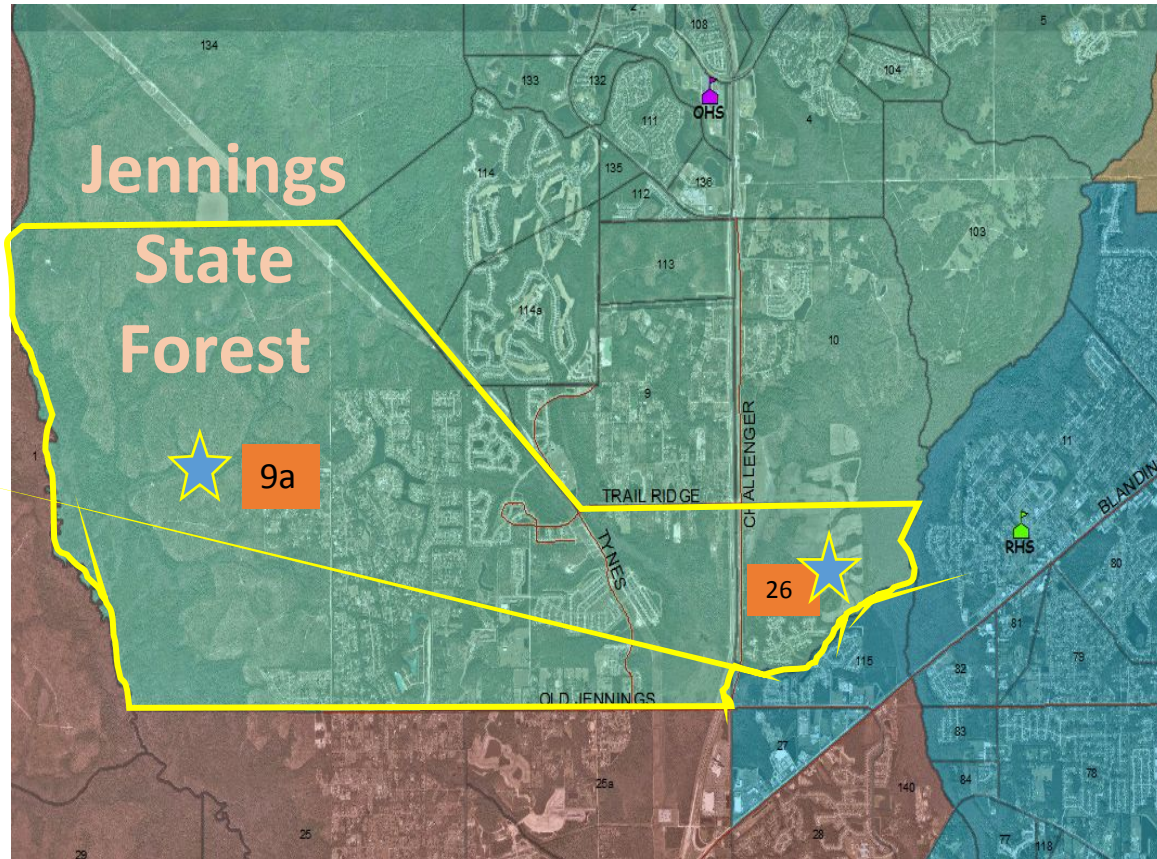
## RHS Option

## Attendance Boundary Change for OakLeaf and Ridgeview High Schools (proposed)

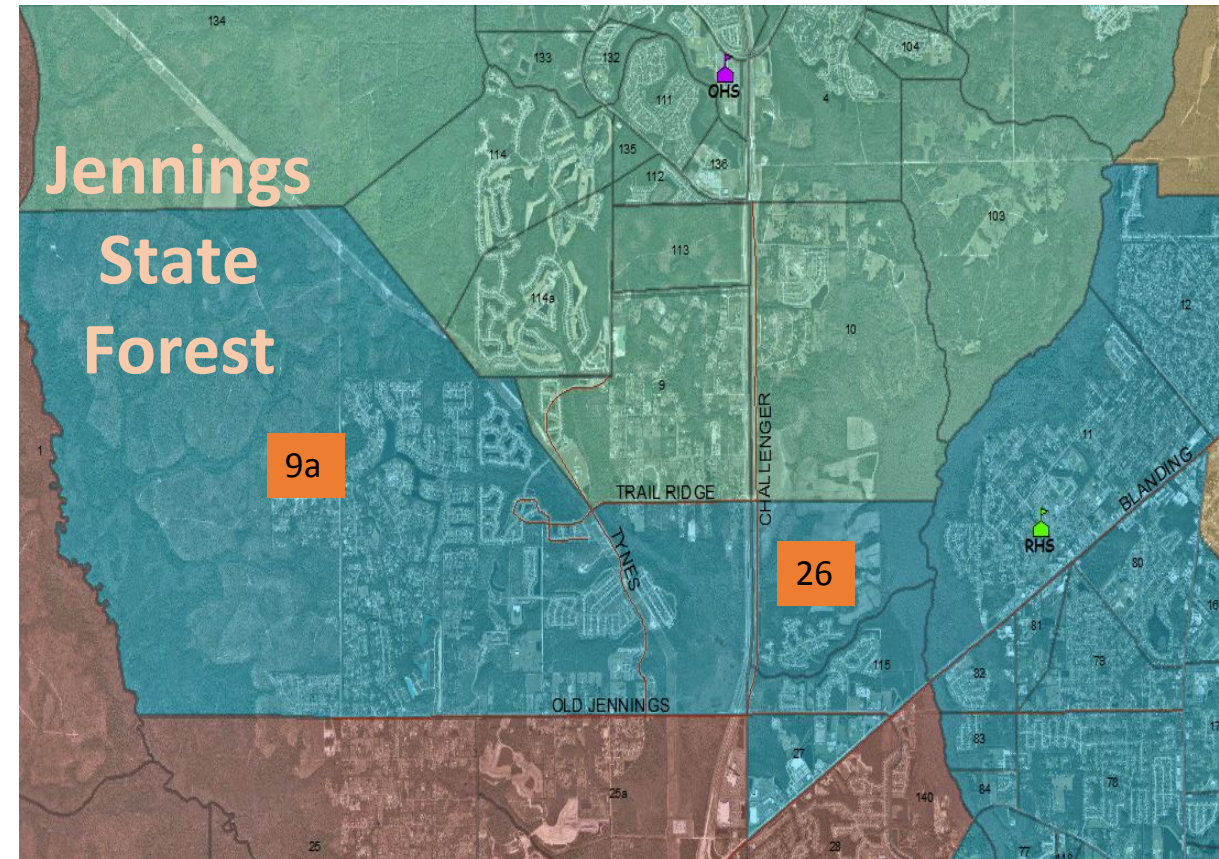
Area	Number of students
26	65
9a	297
362	

Areas 9a and 26 to RHS ≈ 360 students  
 OHS: 106% to 92%  
 RHS: 67% to 84%

Current Attendance Boundary  
 Areas 9a and 26 go to OHS



Proposed Attendance Boundary  
 Areas 9a and 26 to RHS



*\*note: Students currently transported to OHS (6.2 miles)  
 will also be transported to RHS (5.4 miles)*

## RHS Option

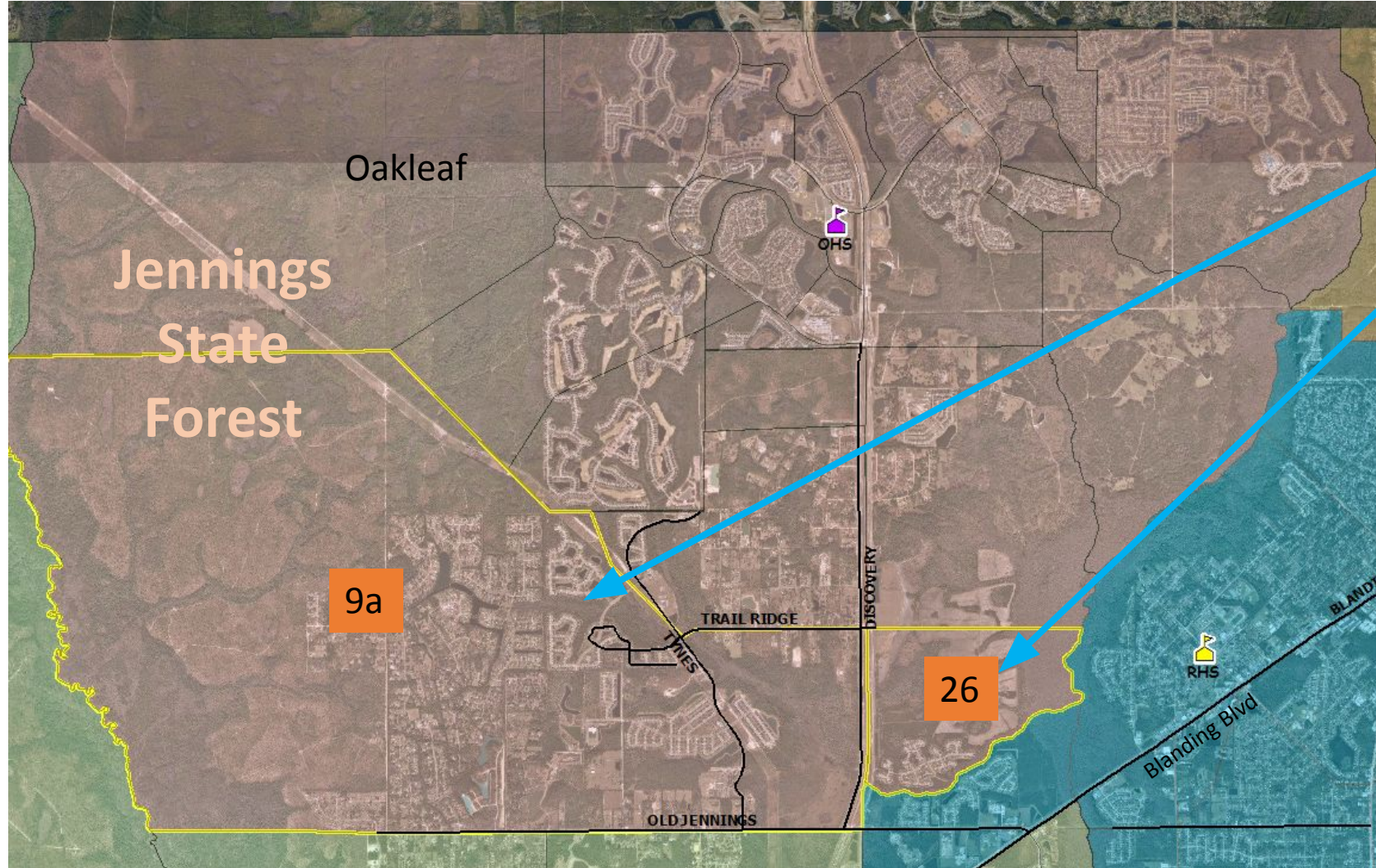
Area	Number of students
26	65
9a	297
362	

# Attendance Boundary Change for Oakleaf and Ridgeview

## High Schools

OHS: 2459 cap / 2607

RHS: 2254 cap / 1522



### Neighborhoods to RHS

(Areas 9a and 26)

- Pine Ridge
- Two Creeks
- Fox Meadow
- Whisper Creek

### Current:

OHS 106 % (Projected growth  $\approx$  230)  
RHS 67% (730  $\approx$  available capacity)

### Status Quo:

OHS 115 % (growing)  
RHS 67%

### Remedy:

Areas:  
9a and 26 to RHS  $\approx$  360 students

### Result:

OHS 92% (allows for growth)  
RHS 84%

*\*note: Students currently transported to OHS (6.2 miles)  
will also be transported to RHS (5.4 miles)*

## OPH Option

Area	Number of students
5	459

# Attendance Boundary Change for Oakleaf HS and Orange Park HS

OHS: 2459 cap / 2607

OPH: 2343 cap / 1534

**Current:** OHS 106% (Projected growth  $\approx$  230)  
OPH 65% (809  $\approx$  available capacity)

**Remedy:** Area 5 to OPH  $\approx$  459 students

**Status Quo:** OHS 115% (growing)  
OPH 65%

**Result:** OHS 87% (*allows for growth*)  
OPH 85%

### Nearhoods to OPH:

- Olde Sutton
- Spencer
- Holly Parke
- Cranes Landing
- Hammock Grove
- Brittany Bluff
- Water Mill
- Plantation Village



*\*note: Students currently transported to OHS (5.2 miles)  
will also be transported to OPH (6.2 miles)*

## OPH Option

Area	Number of students
5	459

## Attendance Boundary Change for Oakleaf HS and Orange Park HS

**Current:** OHS 106% (Projected growth  $\approx$  230)  
OPH 65% (809  $\approx$  available capacity)

**Remedy:** Area 5 to OPH  $\approx$  459 students

**Status Quo:** OHS 115% (growing)  
OPH 65%

**Result:** OHS 87%  
OPH 85%

### Neighborhoods to OPH:

- Olde Sutton
- Spencer
- Holly Parke
- Cranes Landing
- Hammock Grove
- Brittany Bluff
- Water Mill
- Plantation Village



*\*note: Students currently transported to OHS (5.2 miles)  
will also be transported to OPH (6.2 miles)*

Both Option

# Attendance Boundary Change for Oakleaf HS, Ridgeview HS and Orange Park HS

OHS: 2459 cap / 1894 (77%)

RHS: 2254 cap / 1882 (84%)

OPH: 2343 cap / 1993 (85%)

Area	Number of students
26	65
9a	297
Area	Number of students
5	459

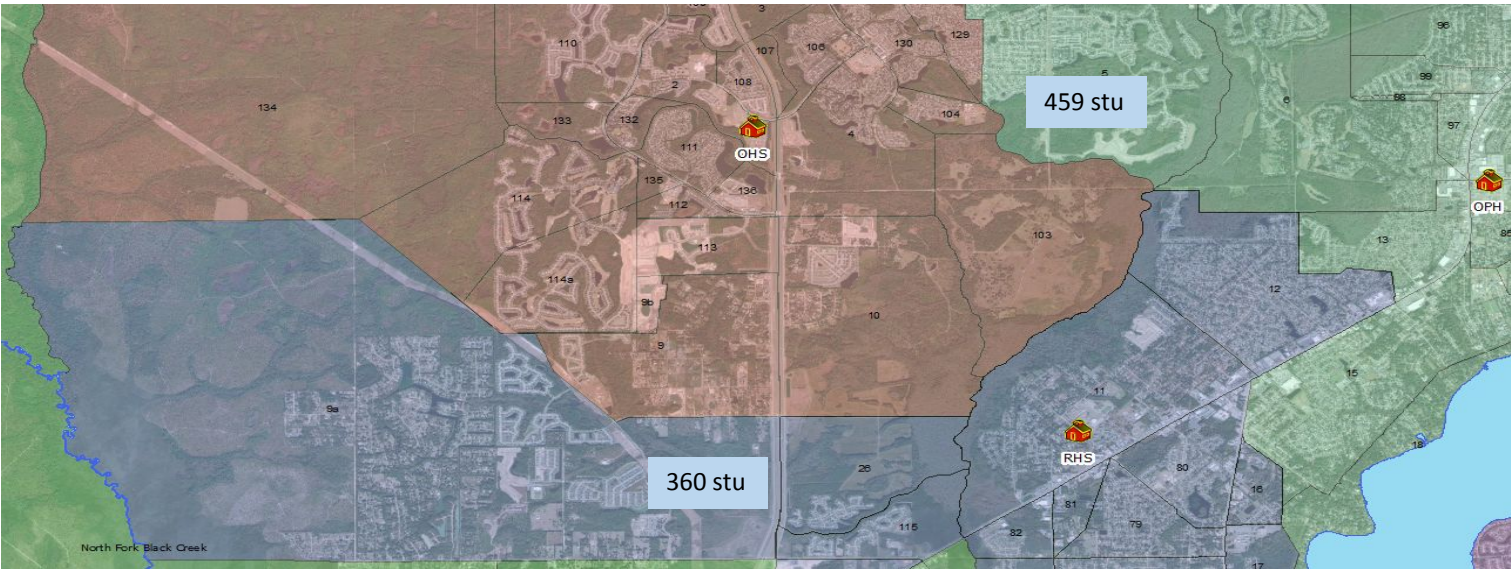
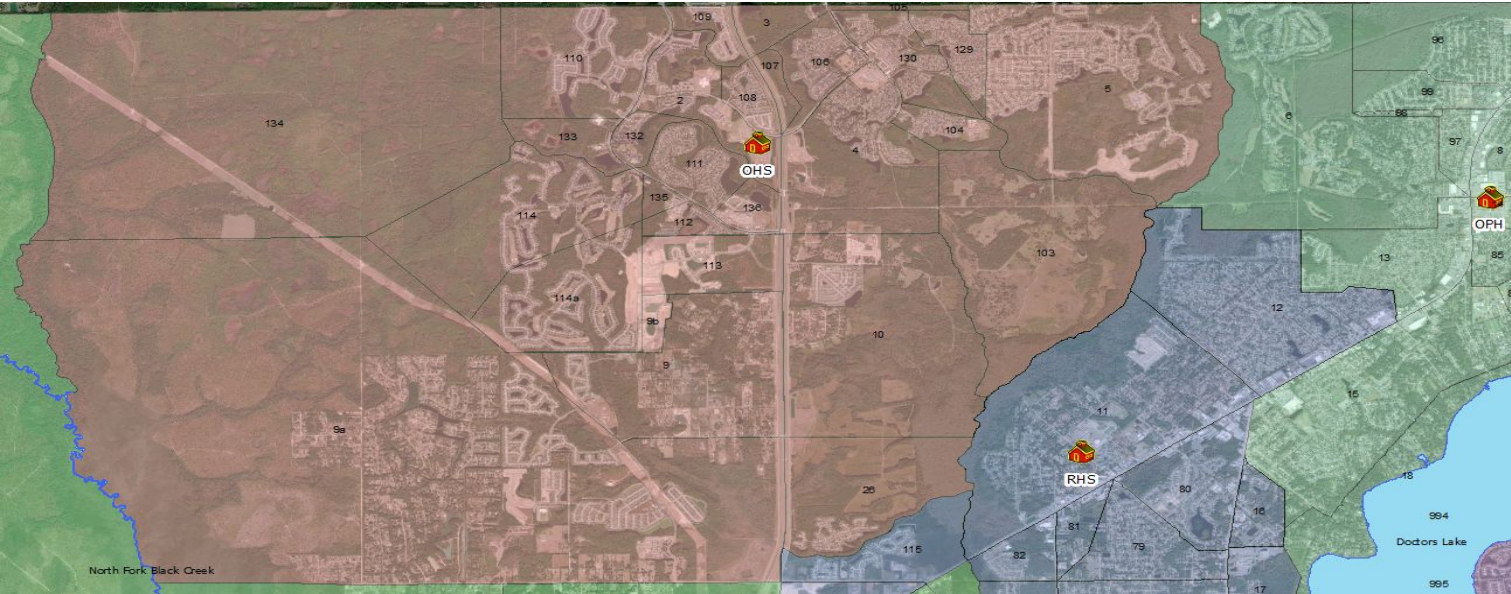
821

**Current:** OHS 106% (Projected growth ≈ 230)  
OPH 65% (809 ≈ available capacity)  
RHS 67% (730 ≈ available capacity)

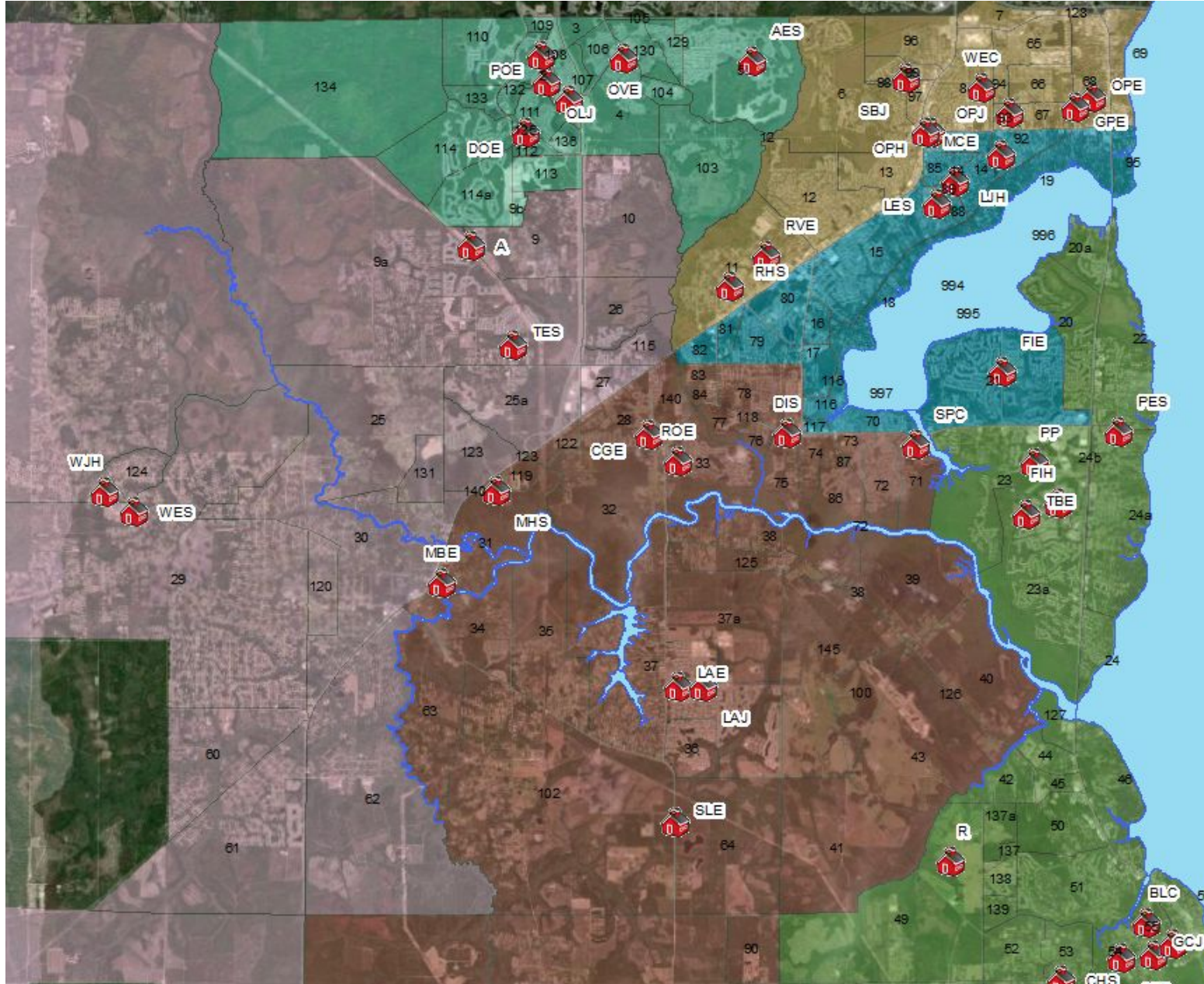
**Remedy:** Area 5 to OPH ≈ 459 students  
9a and 26 to RHS ≈ 360 students

**Status Quo:** OHS 115% (growing)  
OPH 65%  
RHS 67%

**Result:** OHS 77% (Allows for growth)  
OPH 85%  
RHS 84%



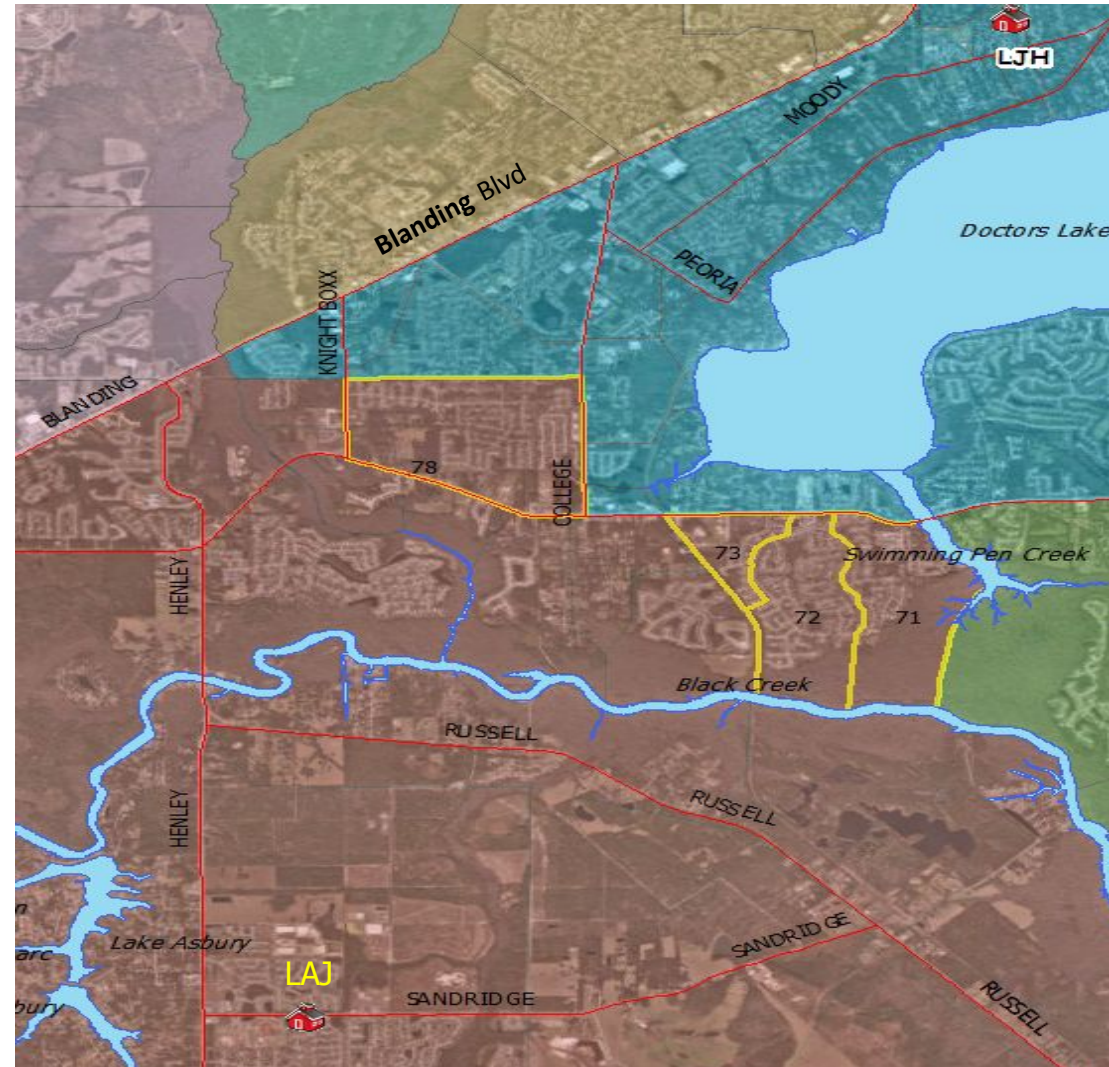
## Junior High School Attendance Boundaries (current)



School	Percent Capacity
Green Cove Spgs JH	90%
Lake Asbury JH	83% (ESE factor 88%)
Lakeside JH	70%
Oakleaf JH	80%
Orange Park JH	70%
Wilkinson JH	97%

# Attendance Boundary LAJ

Current Area



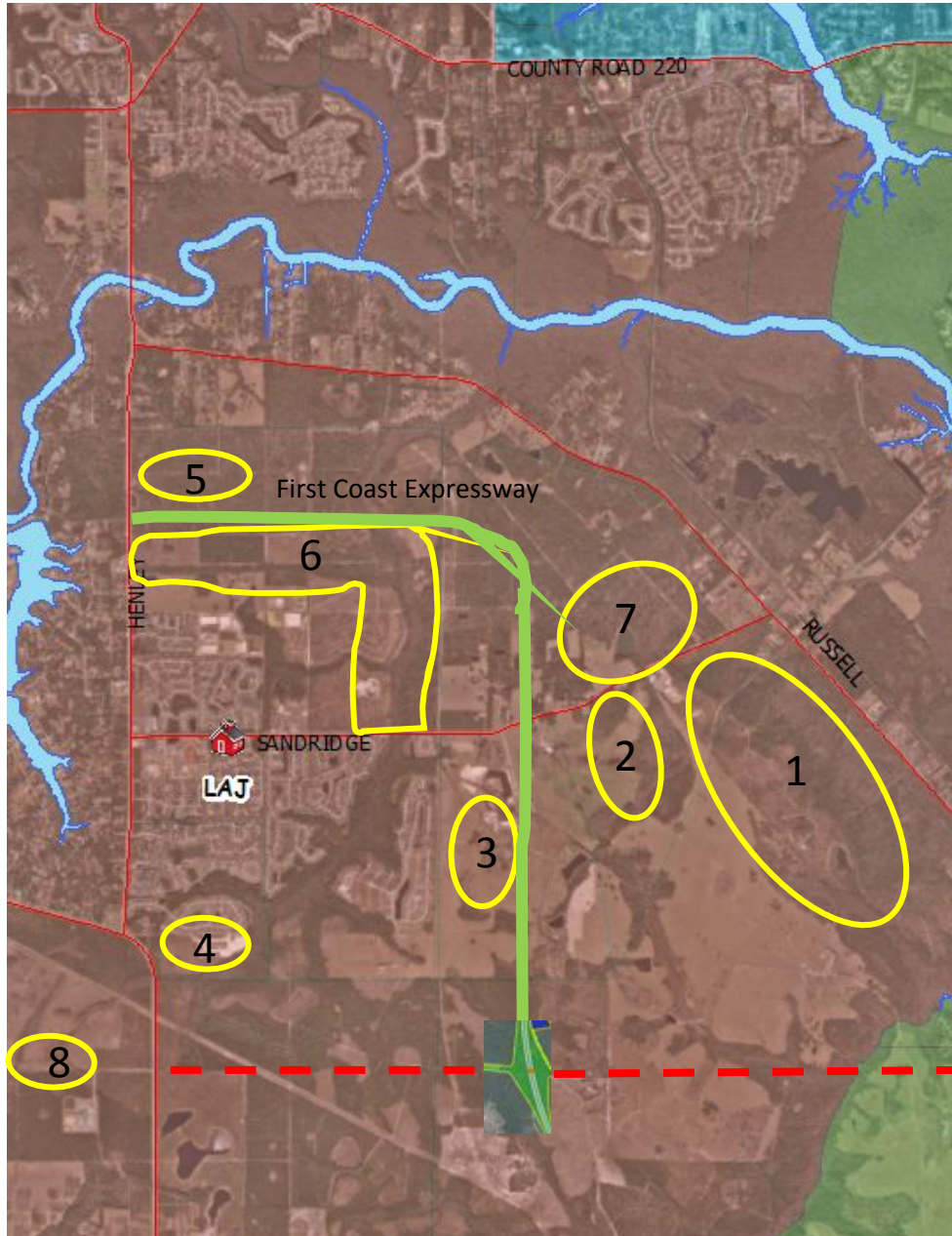
# Attendance Boundary for Lake Asbury JH

LAJ: 1334 cap

Attend: 1107

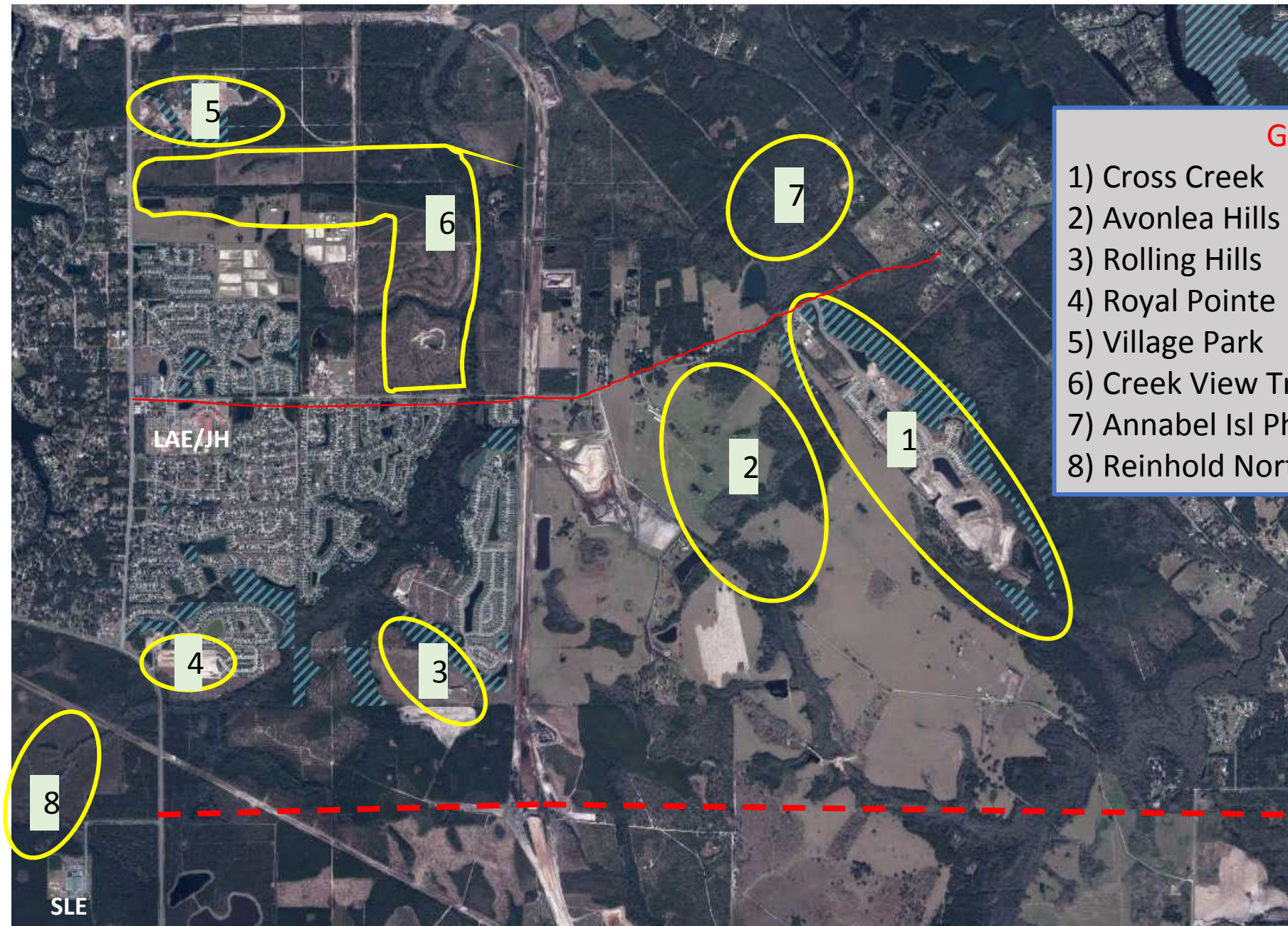
**Current:** LAJ 83% (Projected growth  $\approx$  360) ESE factor: LAJ 88%

**Status Quo:** LAJ 113% (Growing) ESE factor: LAJ 117%



## Growth (LAJ)

1) Cross Creek	(1300)	7 years
2) Avonlea Hills	(774)	4 years
3) Rolling Hills	(139)	2 years
4) Royal Pointe	(62)	1 year
5) Village Park	(300)	2 years
6) Creek View Trail	(1820)	8 years
7) Annabel Isl Phase 1	(245)	3 years
8) Reinhold North	(725)	5 years



### Growth (LAJ)

1) Cross Creek	(1300)	7 years
2) Avonlea Hills	(774)	4 years
3) Rolling Hills	(139)	2 years
4) Royal Pointe	(62)	1 year
5) Village Park	(300)	2 years
6) Creek View Trail	(1820)	8 years
7) Annabel Isl Phase 1	(245)	3 years
8) Reinhold North	(725)	5 years

# Attendance Boundary Change for Lake Asbury and Lakeside Junior High Schools

LAJ: 1334 cap

LJH: 1204 cap

Area	Number of students
71	21
72	48
73	28
78, 83, 84	91

188

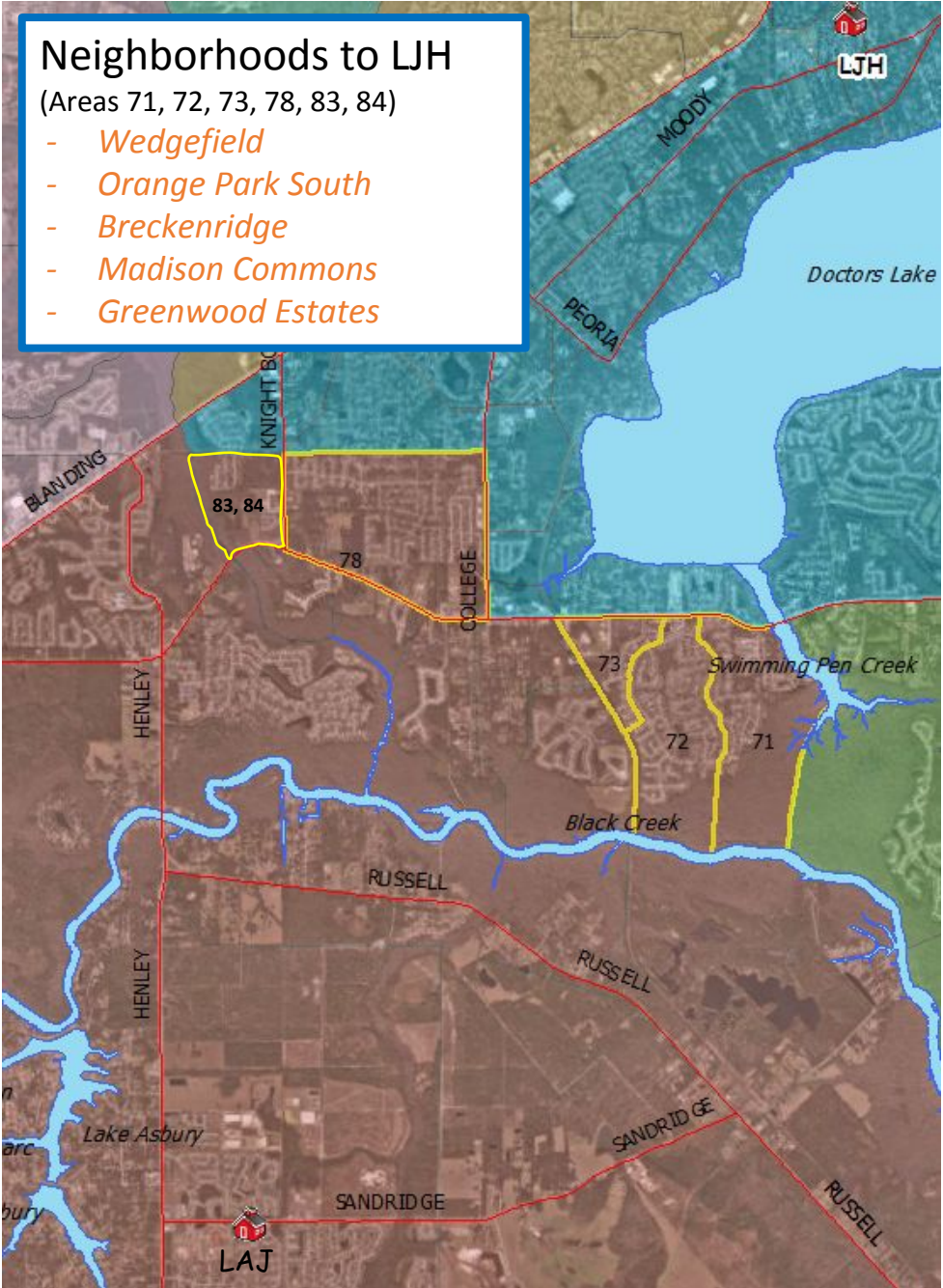
**Current:** LAJ 73% (Projected growth ≈ 360)  
LJH 64% (400 ≈ available capacity)

**Status Quo:** LAJ 113% (Growing) ESE factor: 117%  
LJH 64%

**Remedy:** Areas 71, 72, 73, 78, 83 and 84 ≈ 190 students to LJH

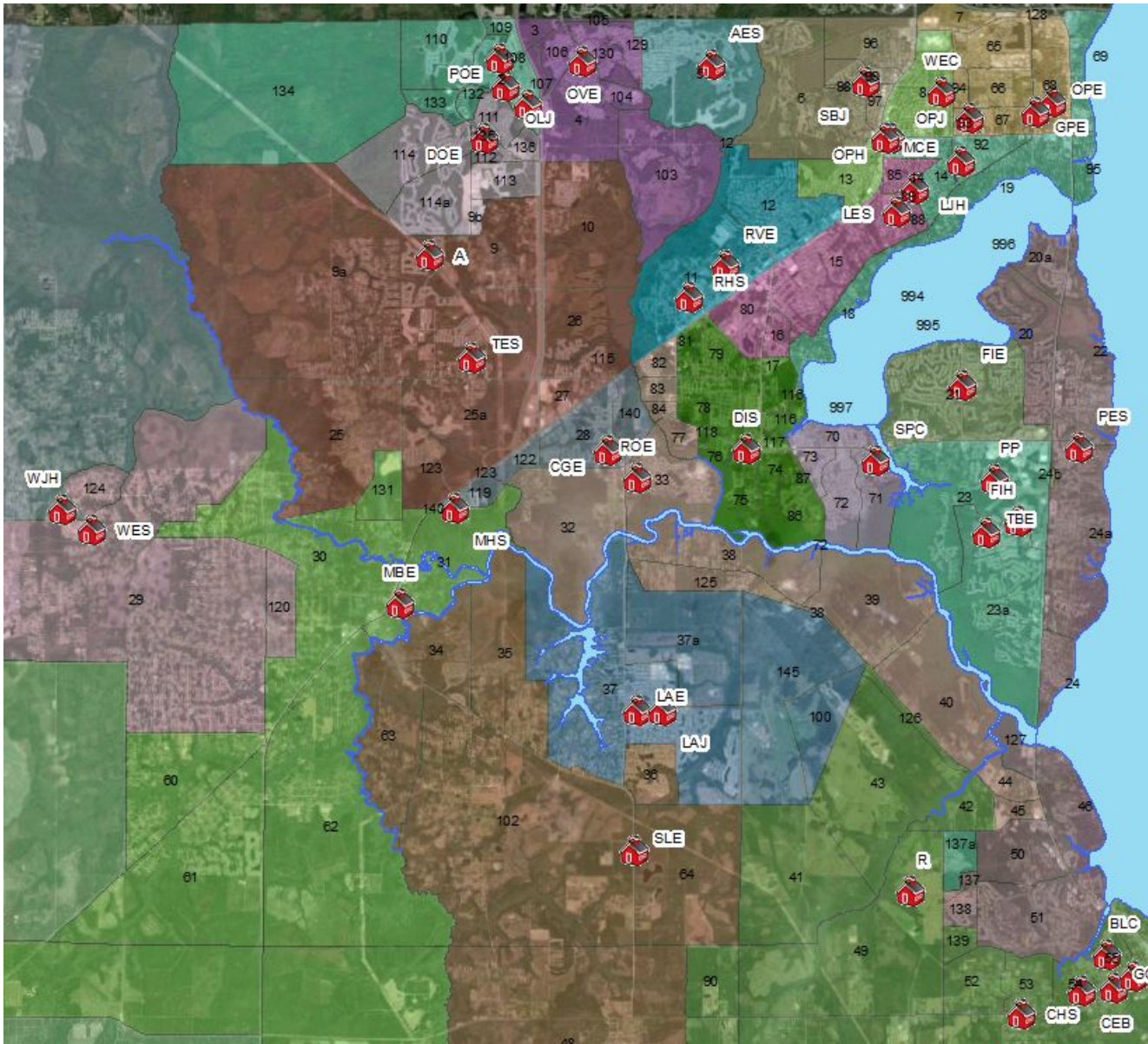
**Result:** LAJ 64% ESE factor: 75% (allows for growth)  
LJH 80%

*\*note: Students currently transported to LAJ (7.62 miles)  
will also be transported to LJH (5.32 miles)*



Elementary School Attendance Boundaries (current)

Elementary School	Percent Capacity
Paterson	104%
Tynes	104%
Coppergate	74%
Fleming Island	81%
C.E. Bennett (Cafeteria)	80%
Lake Asbury	91%
Thunderbolt	79%
Rideout	76%
Discovery Oaks	100%



# Attendance Boundary and Growth

## Paterson ES

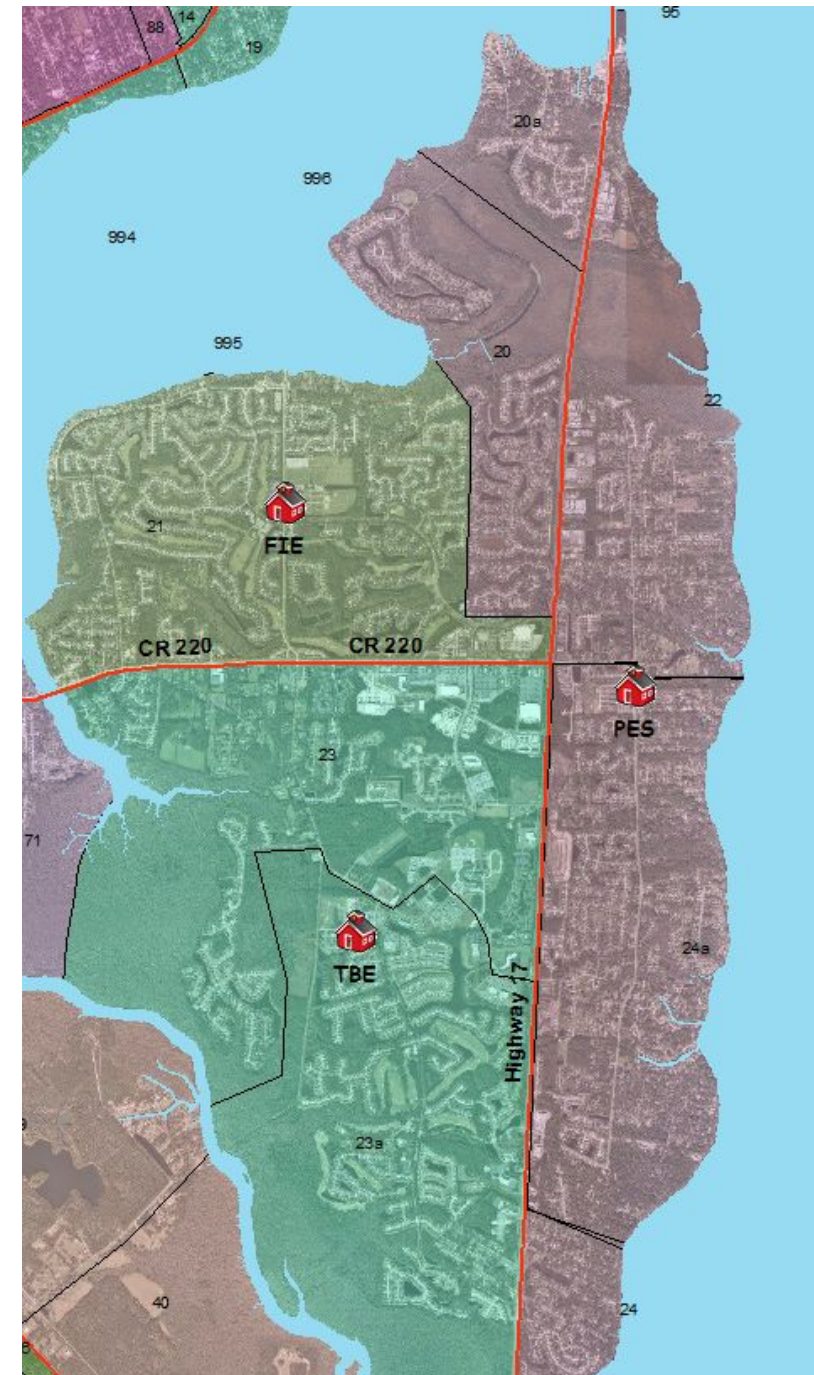
PES: 1105 cap Attend: 1146

**Current:** PES 104% (Projected growth  $\approx$  200)

**Status Quo:** PES 121%

### Growth (PES)

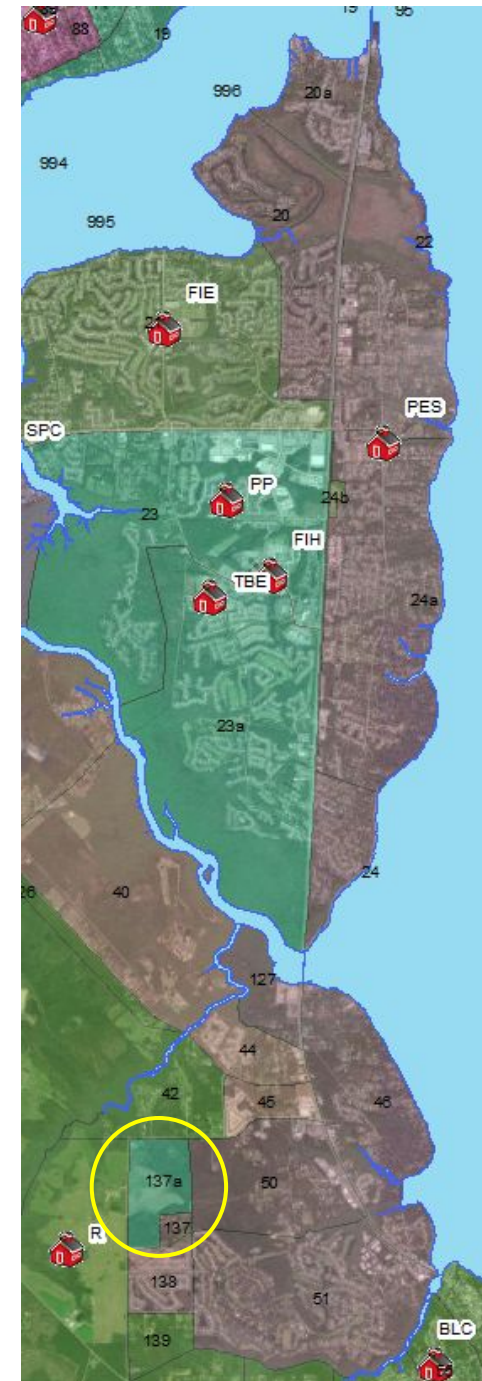
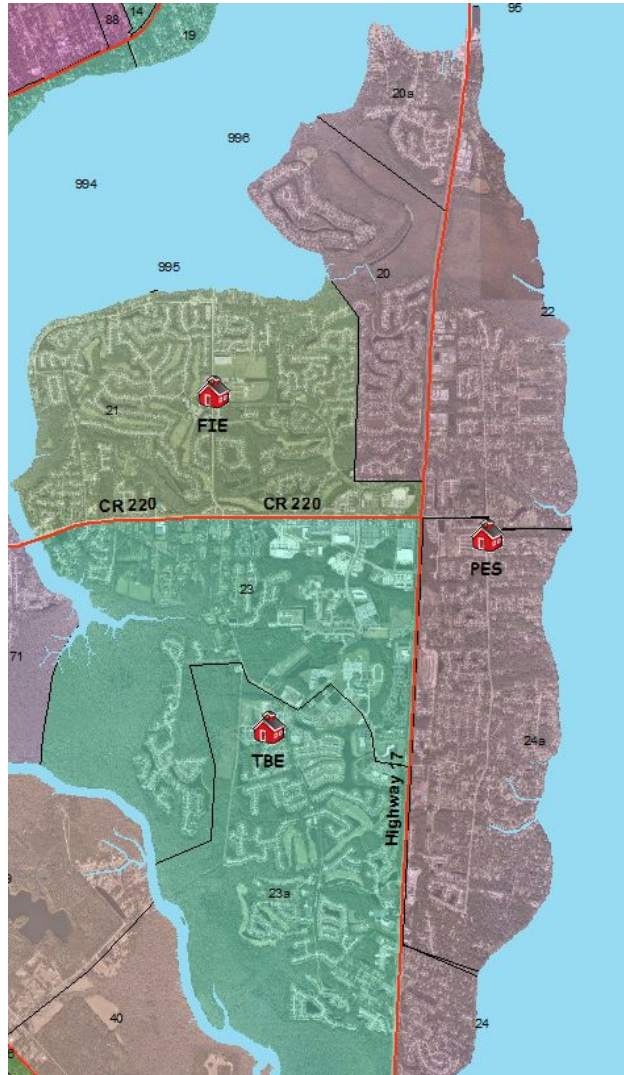
Black Creek Village	1 year
Fleming Estates	2 years
Magnolia West ph III and IV	3 years
The Reserve	2 years
Willow Springs	3 year
Luten Landing	1 year



A map showing the TBE (Tribal Business Enterprise) and PES (Pawnee Economic Services) areas. The map is divided into several colored regions: green for TBE, brown for PES, and blue for water. Highway 17 runs vertically through the center. County Road 315 runs horizontally at the bottom. N Orange Av runs diagonally at the bottom right. Six yellow circles are numbered 1 through 6, indicating specific locations: 1 is in the green TBE area near Highway 17; 2 is in the brown PES area near Highway 17; 3 is in the green TBE area near County Road 315; 4 is in the brown PES area near Highway 17; 5 is in the green TBE area near County Road 315; and 6 is in the brown PES area near Highway 17. The map also shows various other locations like TBE, PES, and Highway 17.

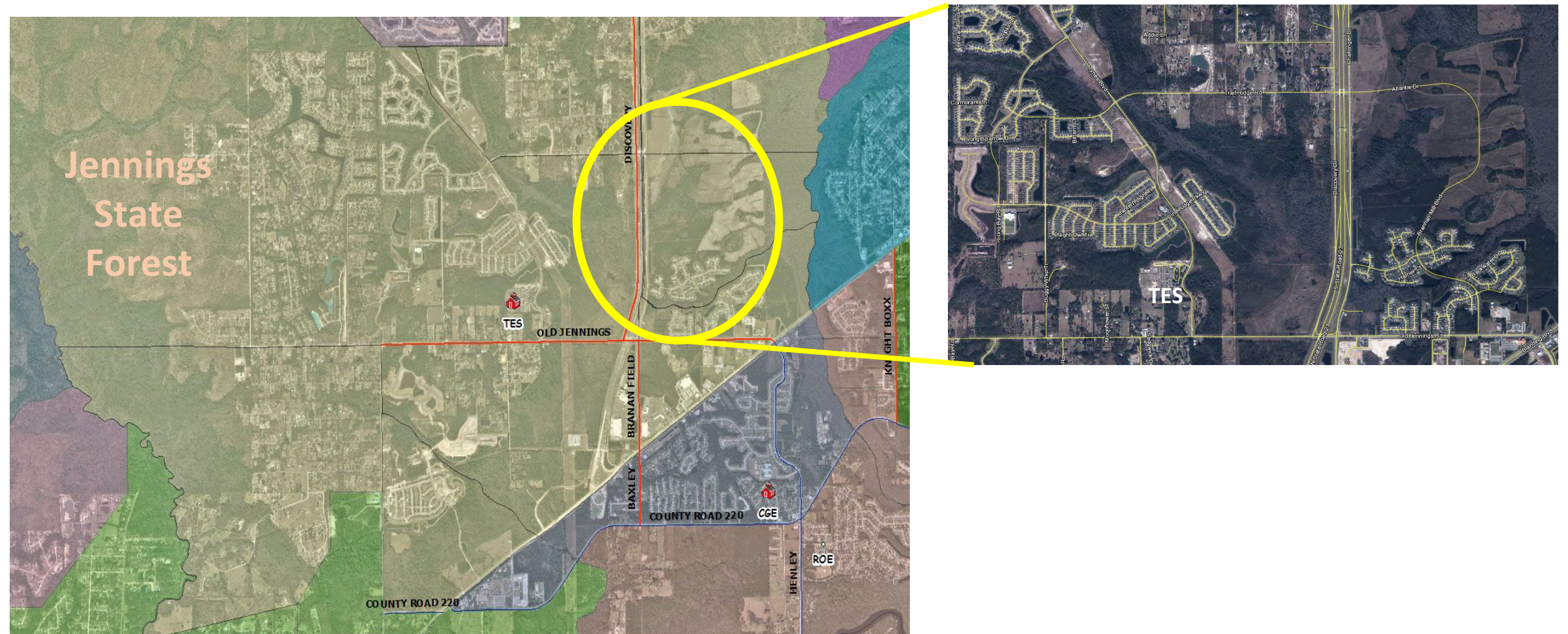
- 1) Black Creek Village – 17 (1 year)
- 2) Fleming Estates – 10 (2 years)
- 3) Magnolia West ph III and IV – 60 (3 years)
- 4) The Reserve – 37 (2 years)
- 5) Willow Spgs – 85 (4 years)
- 6) Luton Landing- 3 (1 year)

# Attendance Boundary for Paterson ES



# Attendance Boundary Tynes ES

**TES: 1004 capacity, 104%**



# Attendance Boundary Change for Tynes and Coppergate Elementary Schools

Area	Number of students
26	65
115	87
27	0 (under development)
152	

TES: 1004 cap

CGE: 725 cap

**Current:** TES 104% (Projected growth ≈ 158)  
CGE 74% (180 ≈ available capacity)

**Status Quo:** TES 120%  
CGE 74%

**Remedy:** Areas 26, 27 and 115 to CGE  
≈ 150 students

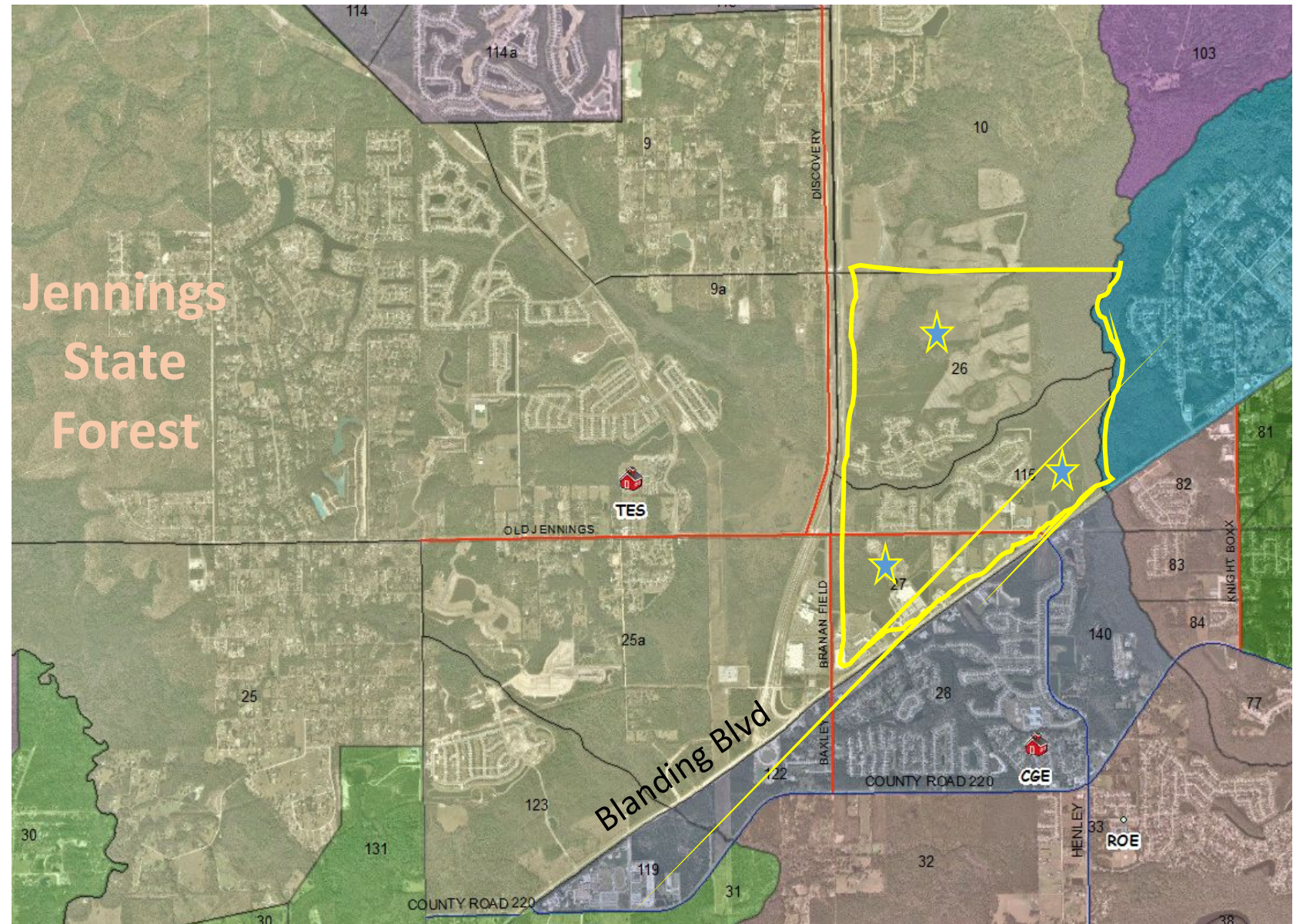
**Result:** TES 85% (*allows for growth*)  
CGE 92%

## Neighborhoods to GCE

(Areas 26, 27, 115)

- Summer Brook
- Branan Mill Plantation
- Whisper Creek

*\*note: Students currently transported to TES (2.5 miles)  
will also be transported to CGE (3.1 miles)*



# Attendance Boundary Tynes and Coppergate Elementary Schools

TES: 1004 cap

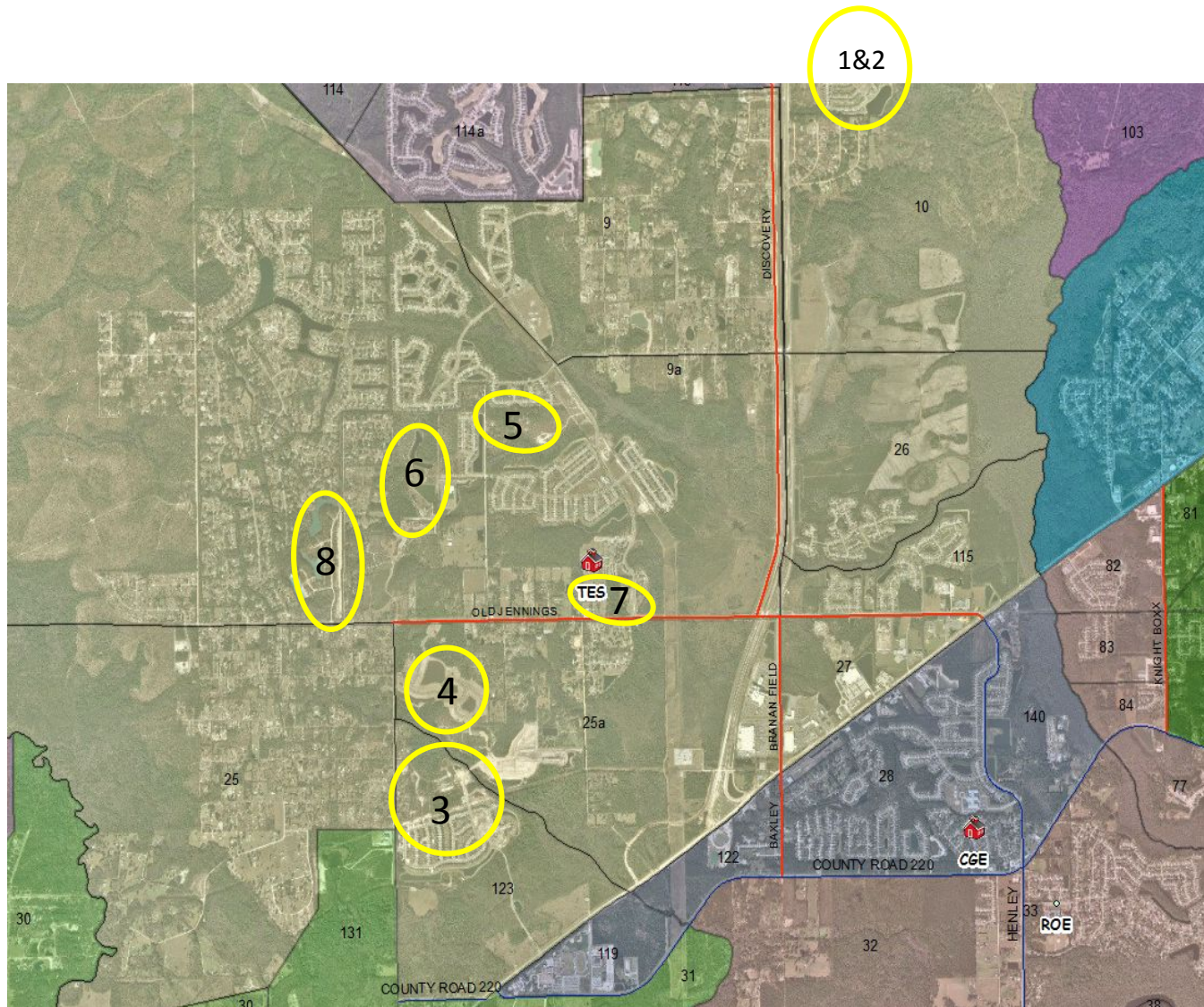
CGE: 725 cap

**Current:** TES 104% (Projected growth ≈ 158)  
CGE 74% (180 ≈ available capacity)

**Status Quo:** TES 120%  
CGE 74%

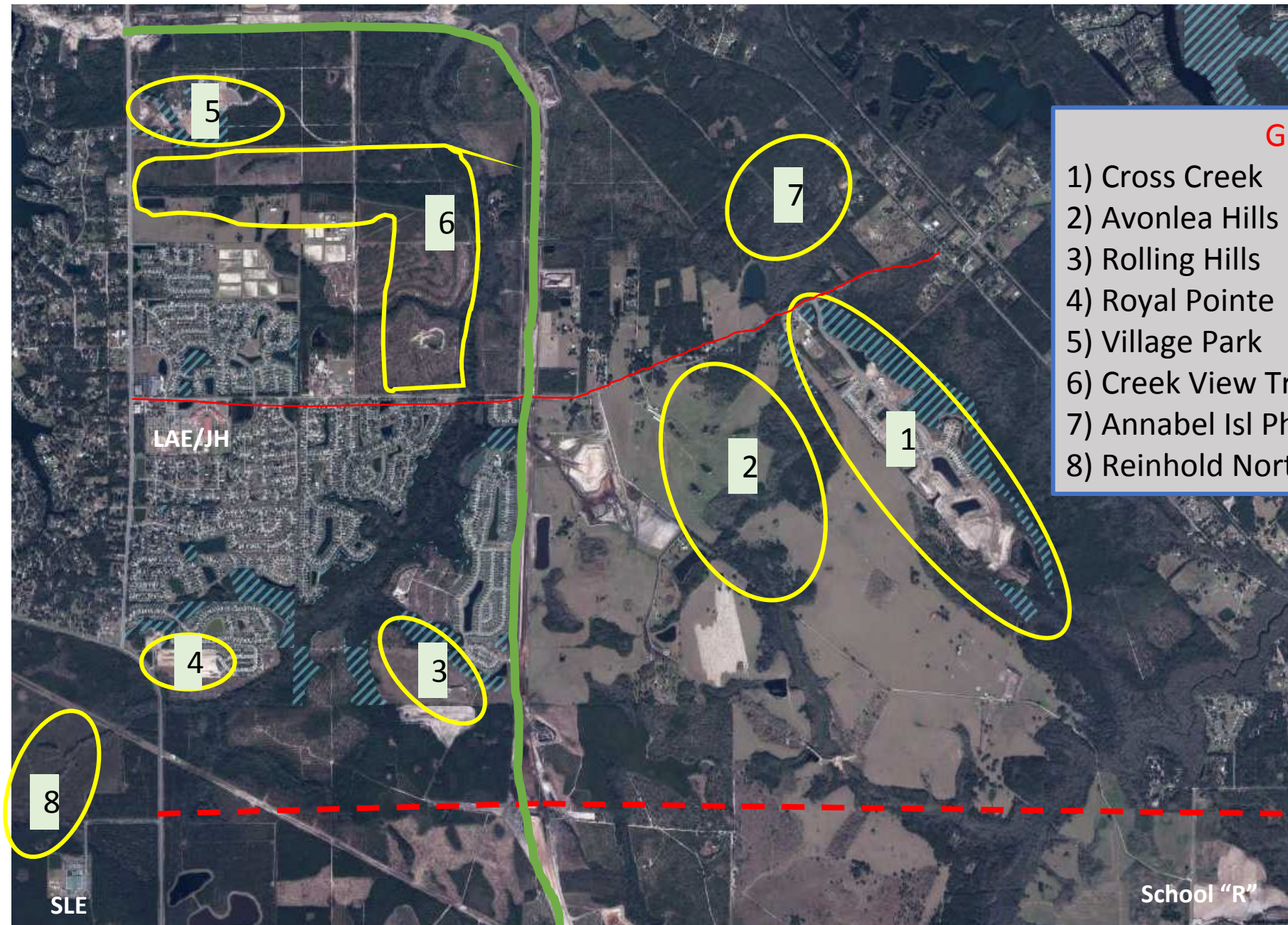
**Remedy:** Areas 26, 27 and 115 to CGE  
≈ 150 students

**Result:** TES 85% (*allows for growth*)  
CGE 92%



## Growth (TES)

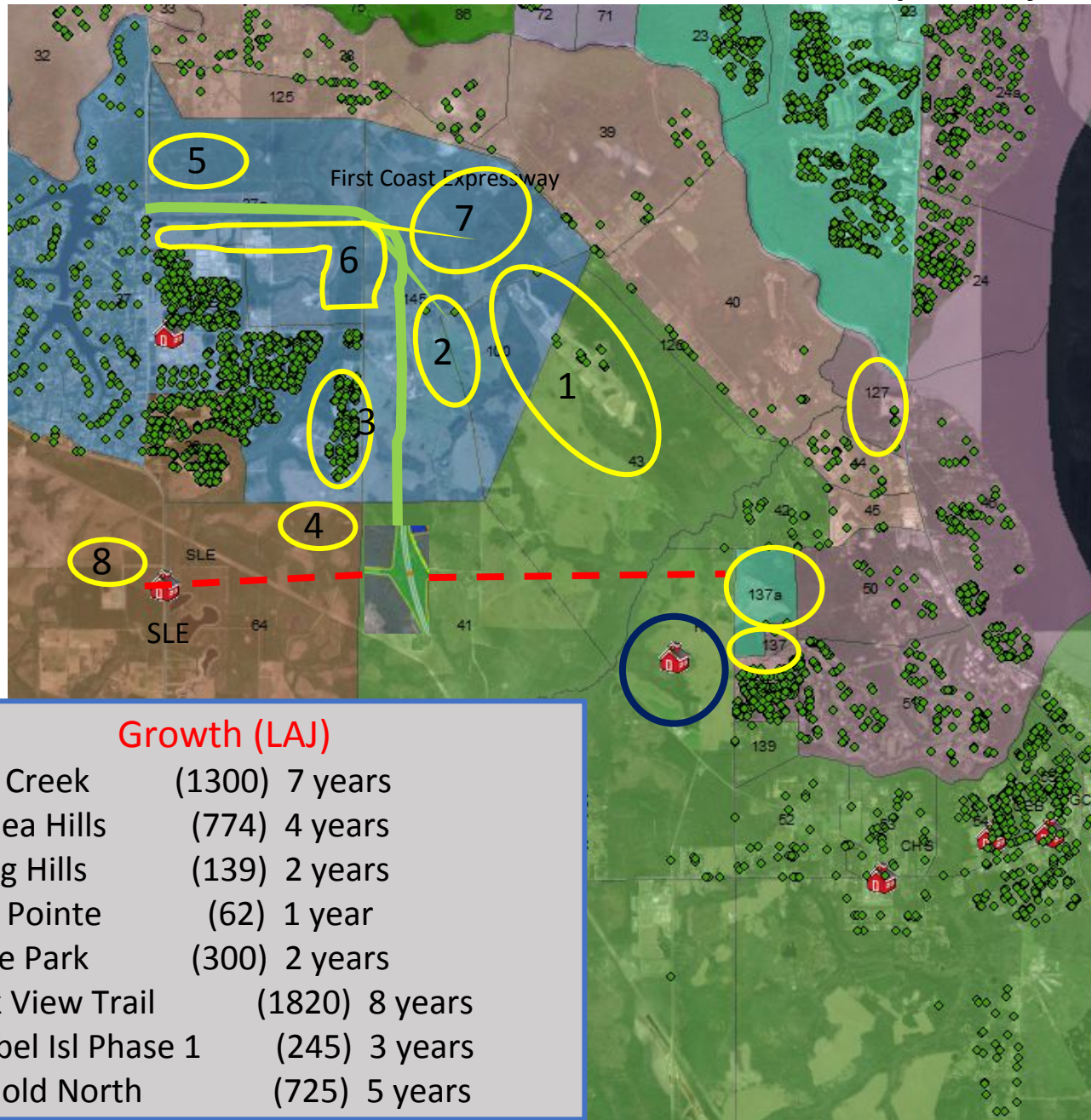
- 1) Cameron Oaks
- 2) Kindlewood
- 3) Azalea Ridge
- 4) Linda Lakes
- 5) Pine Ridge
- 6) Pine Ridge West
- 7) Apartments (unnamed)
- 8) Fox meadow unit 8A



### Growth (LAJ)

1) Cross Creek	(1300)	7 years
2) Avonlea Hills	(774)	4 years
3) Rolling Hills	(139)	2 years
4) Royal Pointe	(62)	1 year
5) Village Park	(300)	2 years
6) Creek View Trail	(1820)	8 years
7) Annabel Isl Phase 1	(245)	3 years
8) Reinhold North	(725)	5 years

# School "R" PK - 6, capacity 862



## Growth (LAJ)

- 1) Cross Creek (1300) 7 years
- 2) Avonlea Hills (774) 4 years
- 3) Rolling Hills (139) 2 years
- 4) Royal Pointe (62) 1 year
- 5) Village Park (300) 2 years
- 6) Creek View Trail (1820) 8 years
- 7) Annabel Isl Phase 1 (245) 3 years
- 8) Reinhold North (725) 5 years

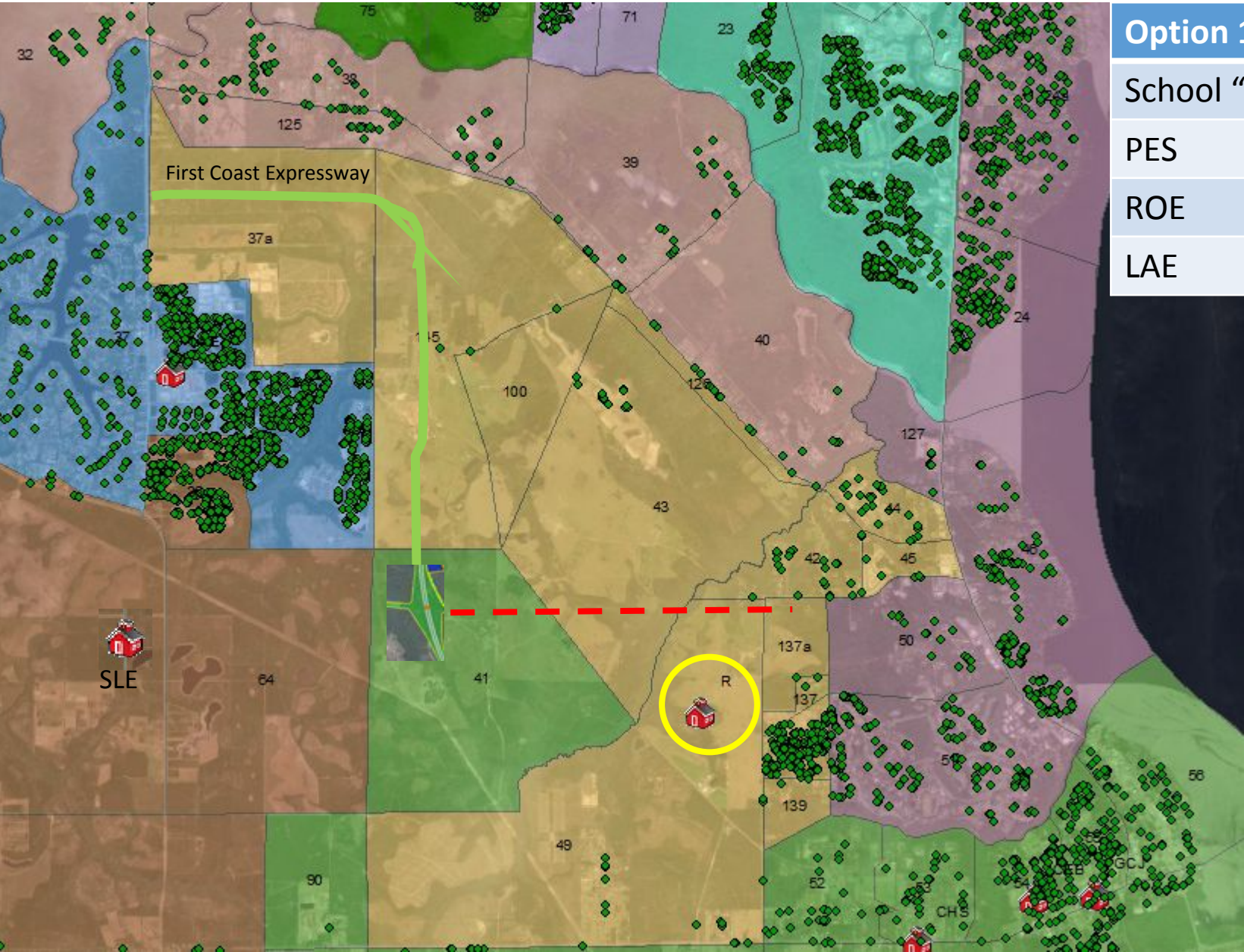
School	Capacity	Attendance	% Capacity
School "R"	862	N/A	N/A
PES	1105	1146	103.7%
ROE	679	518	76%
LAE	970	881	90.8%

## Area Growth

- Magnolia West (PES)
- \*Willow Springs (PES)
- Edgewater Landing (ROE)
- \*Cross Creek (LAE)
- \*Avonlea Hills (LAE)
- \*Annabelle Island Phase I and II (LAE)
- \*Creekview Trail (LAE)
- Traceland (ROE)
- \*Village Park (LAE)
- Rolling Hills (LAE)

\* 2,785 new homes...585 elementary students projected

Proposed Attendance Boundary, School “R” Option 1



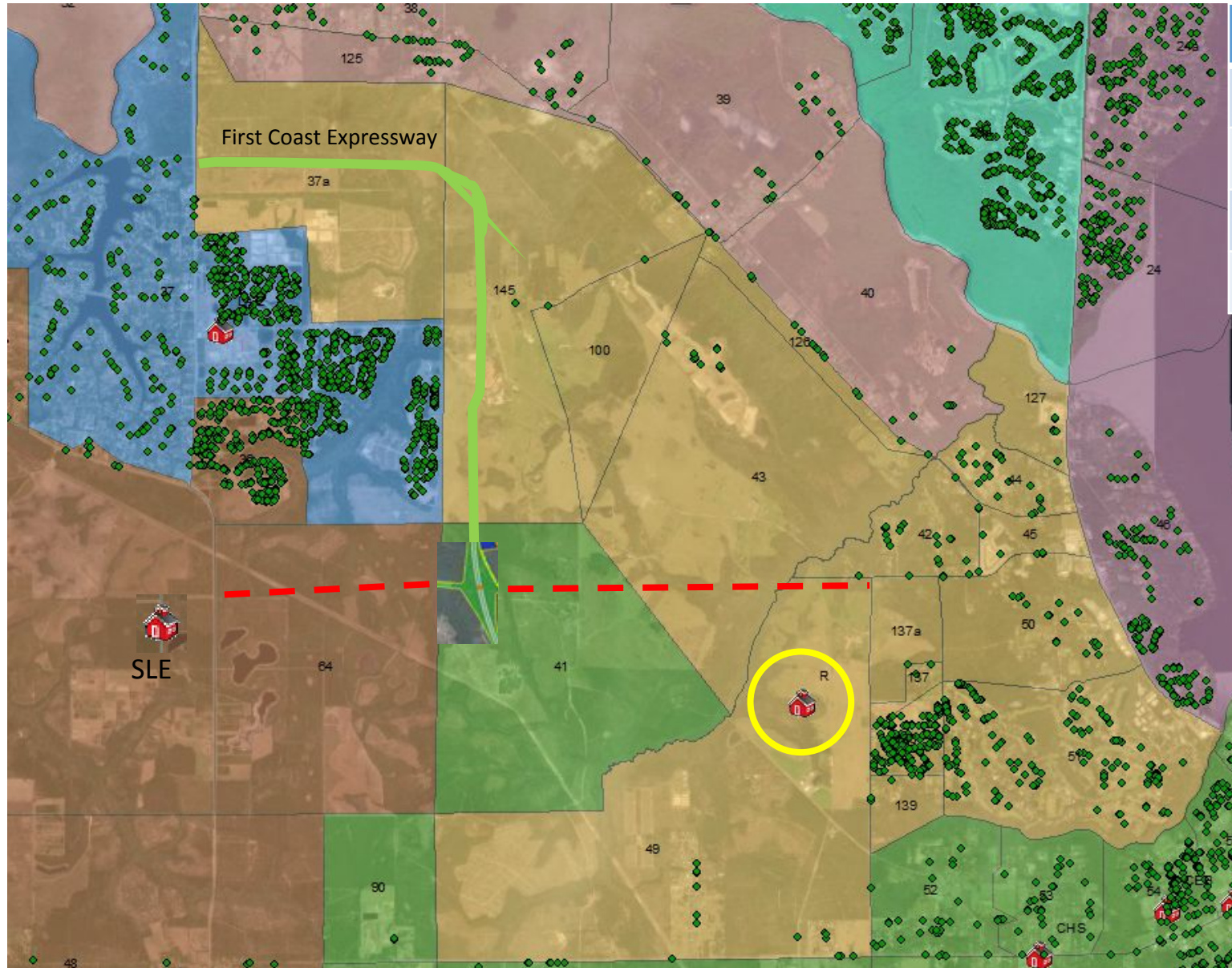
Option 1	Impact	Attendance	% Capacity
School “R”	297	297	34%
PES	-210	936	85%
ROE	-29	489	72%
LAE	-22	859	89%

Area in gold represents the Attendance Boundary for school “R”: **Option 1**

- Magnolia West
- \*Willow Springs
- Edgewater Landing
- \*Cross Creek
- \*Avonlea Hills
- \*Annabelle Island Phase I and II
- \*Creekview Trail
- \*Village Park
- Traceland

\* 2,785 new homes...585 elementary students projected

## Proposed Attendance Boundary, School “R” Option 2



Option 2	Impact	Attendance	% Capacity
School “R”	442	442	52%
PES	-358	788	71%
ROE	-29	489	72%
LAE	-22	859	89%

Area in **gold** represents the Attendance Boundary for school “R”: **Option 2**

-Magnolia Point

-Black Creek Village

-Magnolia West

-\*Willow Springs

-Edgewater Landing

-\*Cross Creek

-\*Avonlea Hills

-\*Annabelle Island Phase I and II

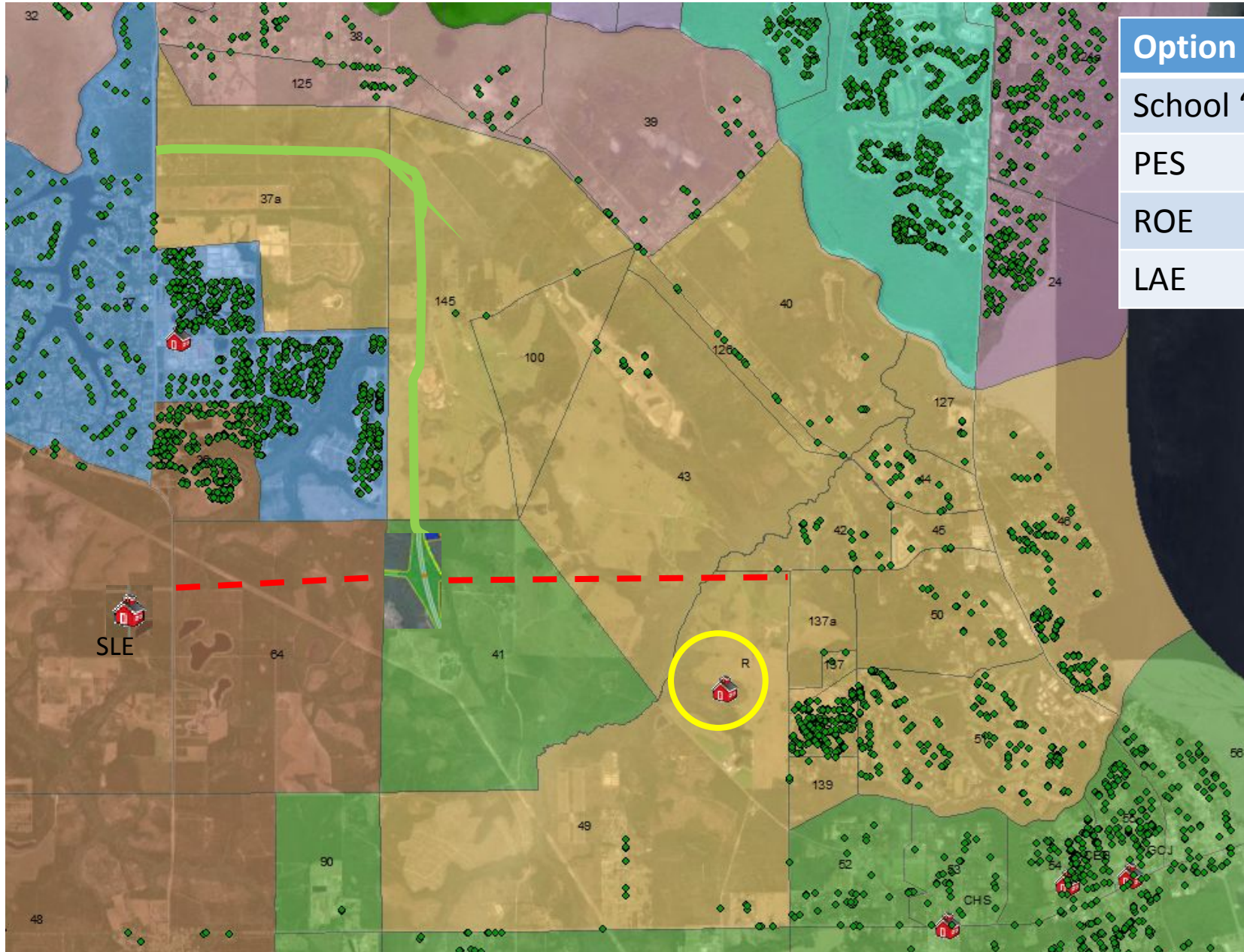
-\*Creekview Trail

-Traceland

\* 2,785 new homes...585 elementary students projected

*\*note: Students currently transported to LAE (3.0 miles)  
will also be transported to School “R” (5.2 miles)*

## Proposed Attendance Boundary, School “R” Option 3



Option 3	Impact	Attendance	% Capacity
School “R”	603	603	71%
PES	-498	648	59%
ROE	-38	480	71%
LAE	-22	859	89%

Area in **gold** represents the Attendance Boundary for school “R”: **Option 3**

- Magnolia Point
- Black Creek Village
- East of US 17, between Gov’s Creek and Black Creek
- Section of ROE’s AZ along CR 209 (area 40)
- Magnolia West
- \*Willow springs
- Edgewater Landing
- \*Cross Creek
- \*Avonlea Hills
- \*Annabelle Island Phase I and II
- \*Creekview Trail
- Traceland
- \* 2,785 new homes...585 elementary students projected

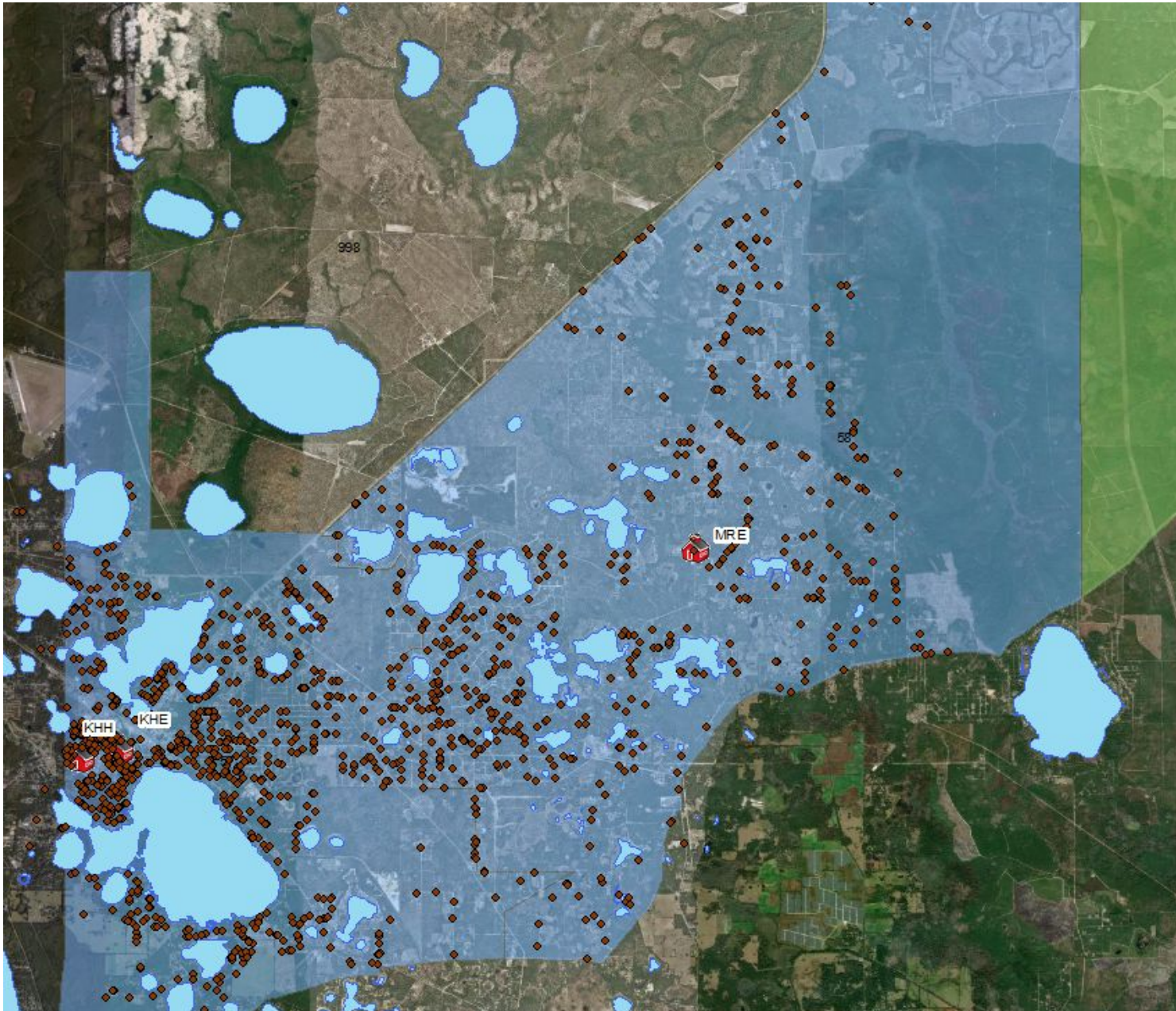
## Attendance Boundary, Keystone Heights MS

School	Capacity	Impact	Attendance	% Capacity
KHM	?	N/A	656	
KHS	1399	416	907	64%

Area in Greyblue represents the Attendance Boundary for KHJ

- Design as 6-8 (middle school)
- Allows for portable reduction at KHS
- Retains administrative building
- Retains gymnasium

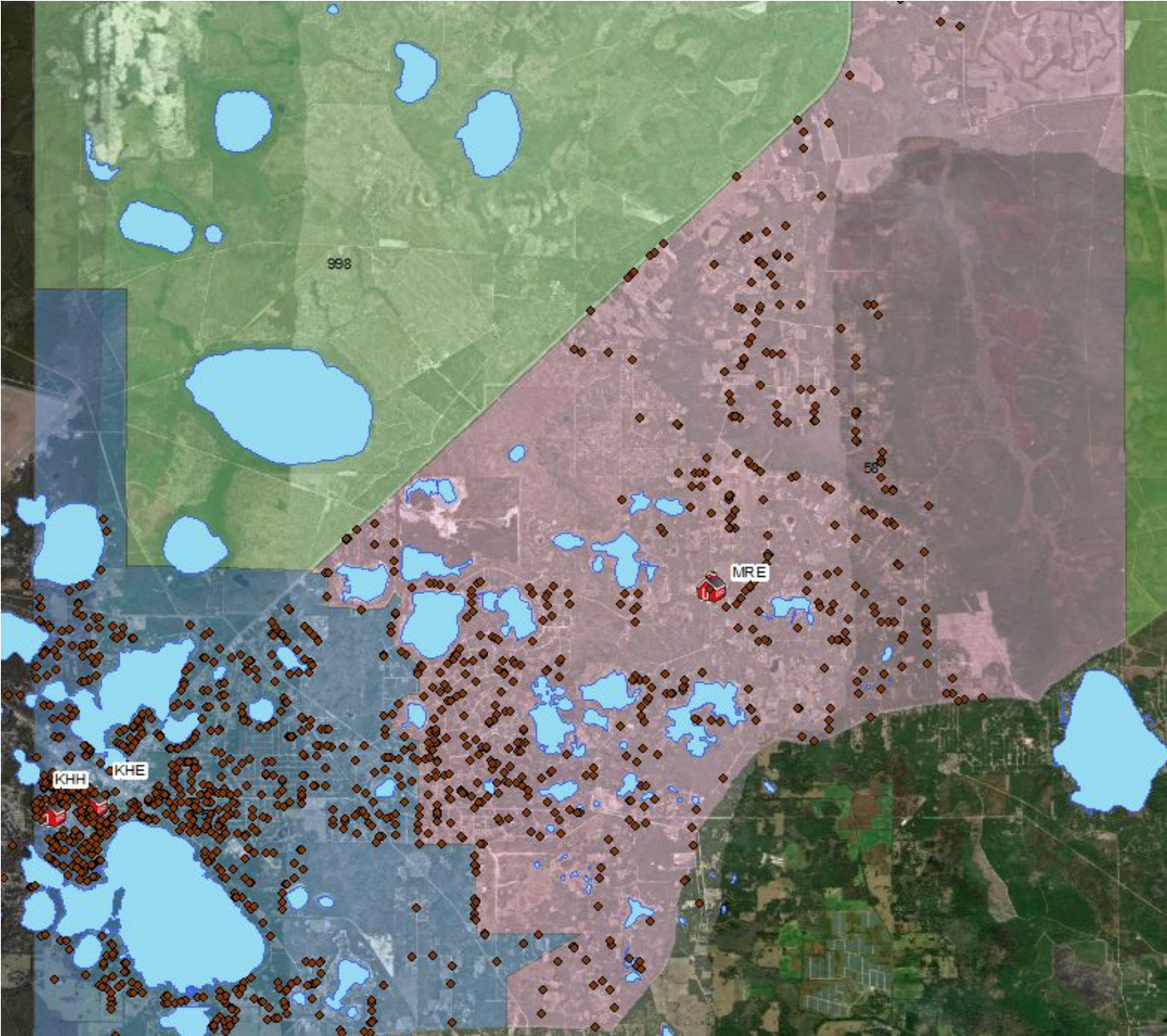
School	Capacity	Impact	Attendance	% Capacity
KHE	?	-132	532	
MRE	550	-85	470	85%
KHM	?	N/A	656	



# Session Break



Attendance Boundary, Keystone Heights ES

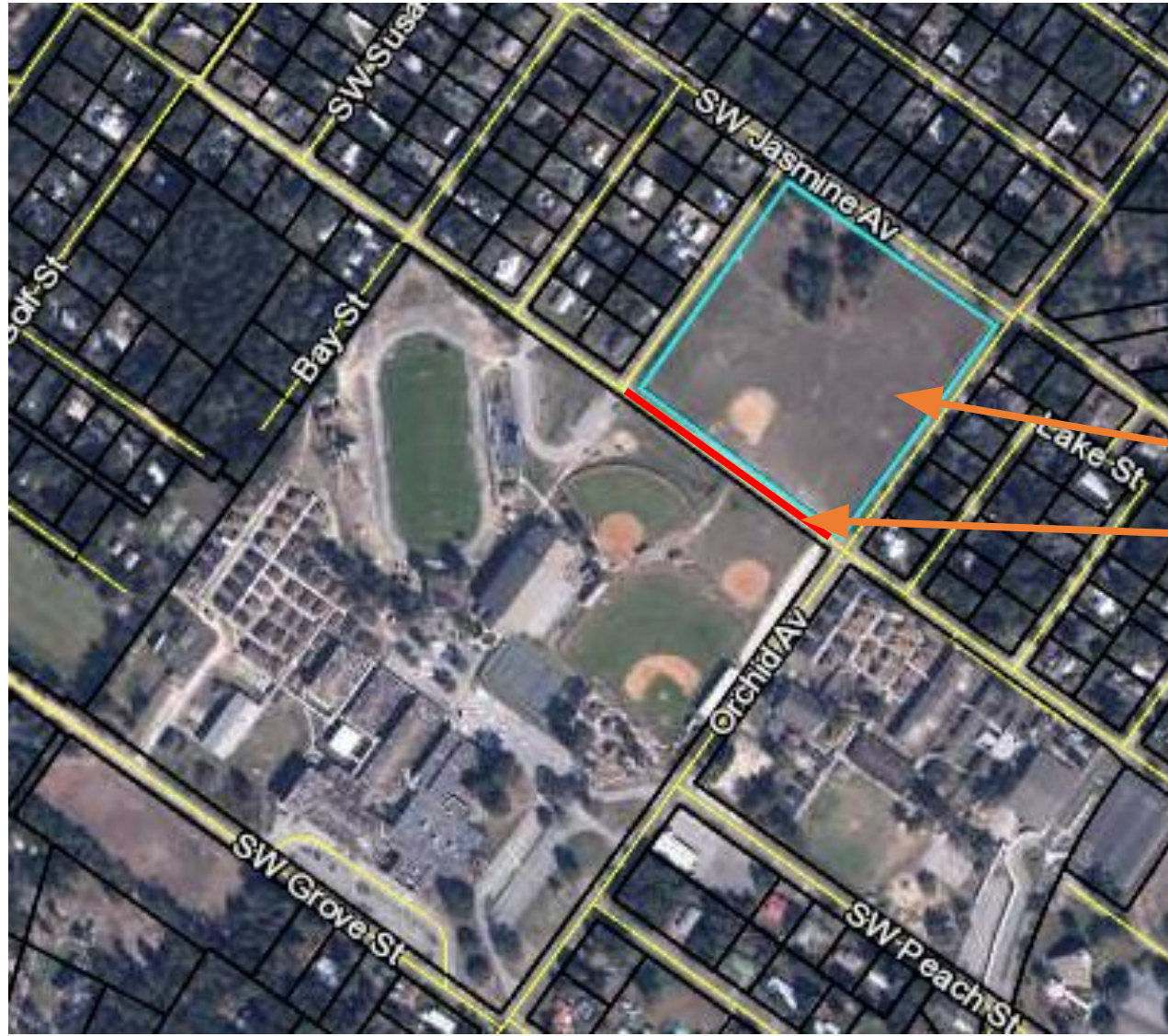


- Area in Greyblue represents the Attendance Boundary for Keystone Heights ES
- Area in Maroon represents the Attendance Boundary for McRae ES

**Action:** Design architect to master plan the campus

School	Capacity Café/FISH	Attendance	% Capacity
KHE	770/823	813	105% / 98.7%
*MRE	960/550	553	85% / 100.5%
*has room for portables or wing			

## Keystone Heights k-12 combined campus



Parcel ID - 19-08-23-022519-000-00  
Alt Id - 022519-000-00  
Address - PECAN & ORCHID Ave  
Owner - SCHOOL BOARD OF CLAY COUNTY  
Acres - 9  
View: [Report](#) | [Pictometry](#)

Proposed site for Keystone expansion...K-5 or 6-8

- 9 acres
- Close section of SW Pecan St (610 ft)



There otter be Questions???