



Board Member Districts Workshop

September 9, 2021



Legal Requirements

Florida Statute 1001.36 - District school board member residence areas:

- (1) For the purpose of electing district school board members, each district shall be divided into at least five district school board member residence areas, which shall be numbered one to five, inclusive, and which **shall, as nearly as practicable, be equal in population***.
 - (a) For those school districts, which have seven district school board members, the district may be divided into five district school board member residence areas, with two district school board members elected at large, or the district may be divided into seven district school board member residence areas. In the latter case, the residence areas shall be numbered one to seven inclusive and shall be equal in population as nearly as practicable.
 - (b) For those school districts which have seven district school board members, the number of district school board member residence areas shall be determined by resolution passed by a majority vote of the district school board.
- (2) **Any district school board may make any change that it deems necessary in the boundaries** of any district school board member residence area at any meeting of the district school board, provided that such **changes shall be made only in odd-numbered years** and that no change that would affect the residence qualifications of any incumbent member shall disqualify such incumbent member during the term for which he or she is elected.
- (3) Such changes in boundaries shall be shown by resolutions spread upon the minutes of the district school board, shall be recorded in the office of the clerk of the circuit court, and shall be published at least once in a newspaper published in the district within 30 days after the adoption of the resolution, or, if there be no newspaper published in the district, shall be posted at the county courthouse door for 4 weeks thereafter. A certified copy of this resolution shall be transmitted to the Department of State.

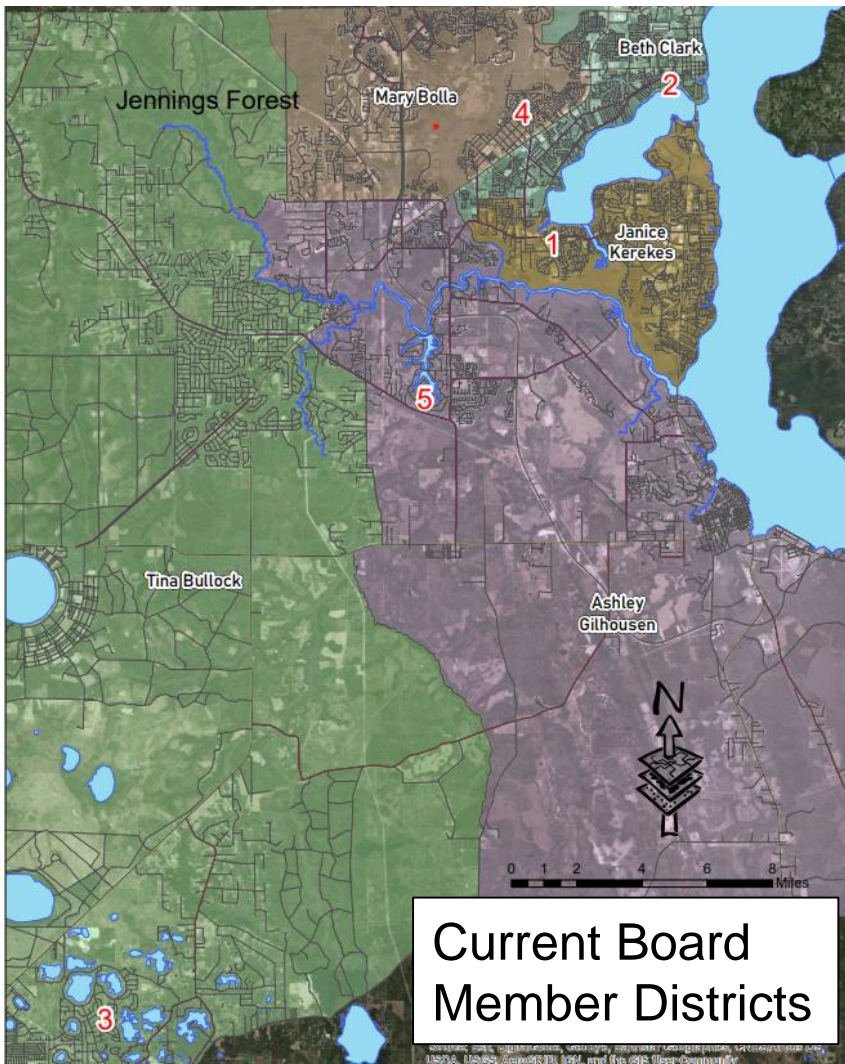


Legal Requirements

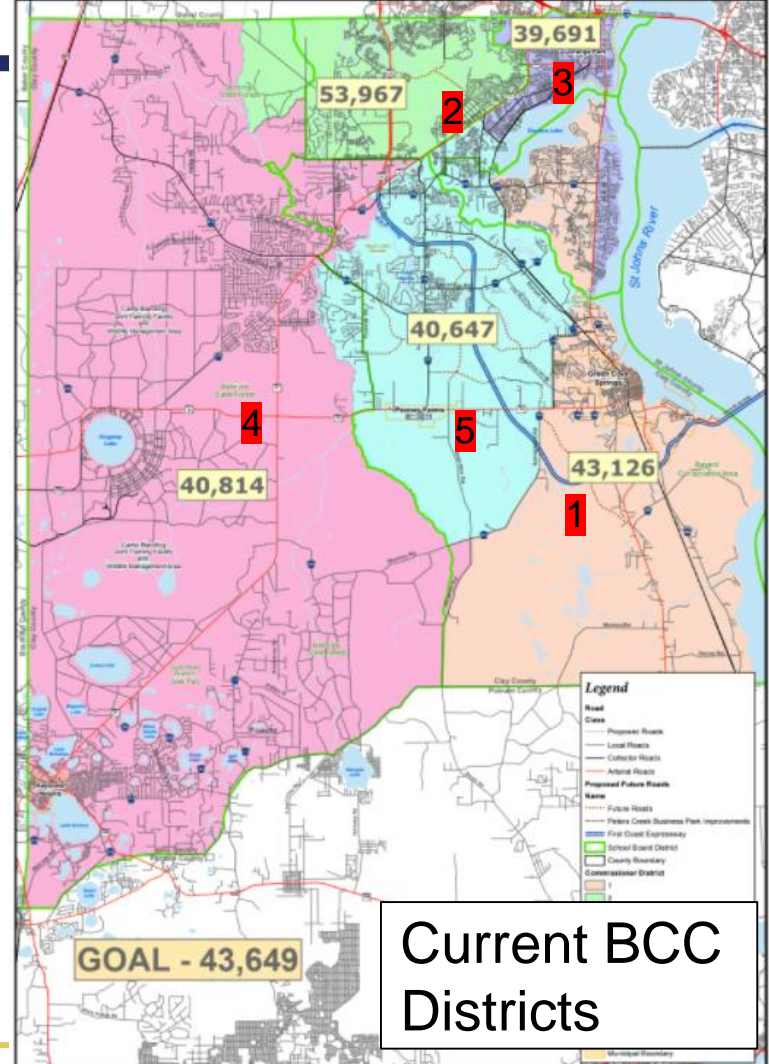
Florida Statute 1001.36 - District school board member residence areas:

...shall, as nearly as practicable, be equal in population:

- Absolute population equality is impossible.
- Minimize deviation from the mean less than 3% over/under is ideal
- Two districts with population differences over 10% raises a red flag



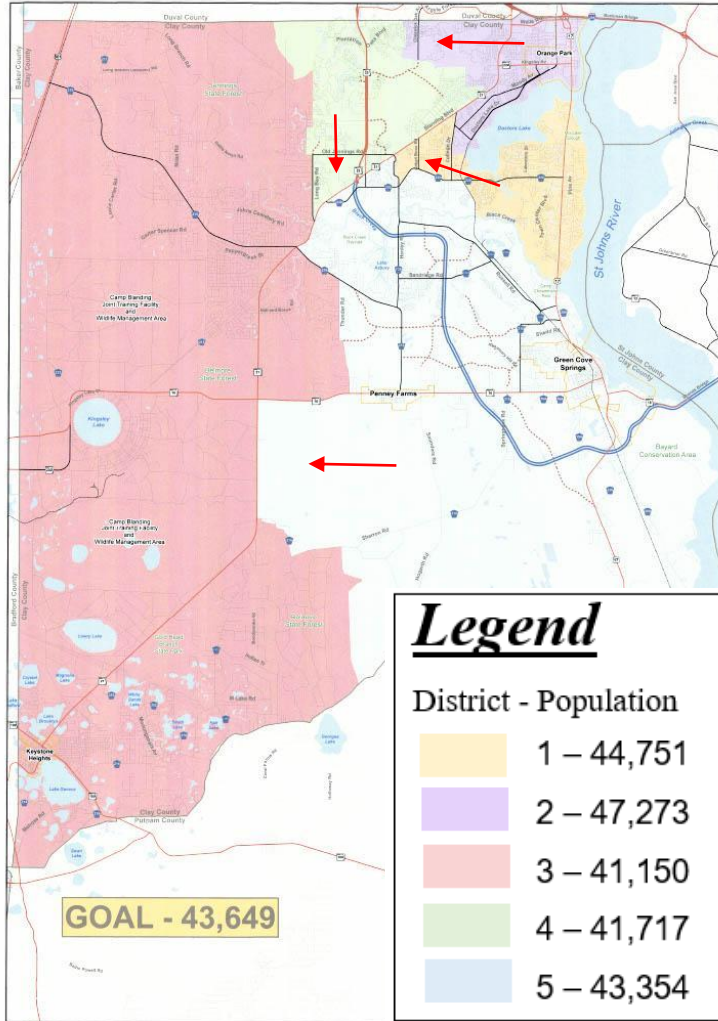
Current Board Member Districts

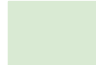


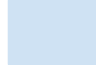


Current BCC Districts

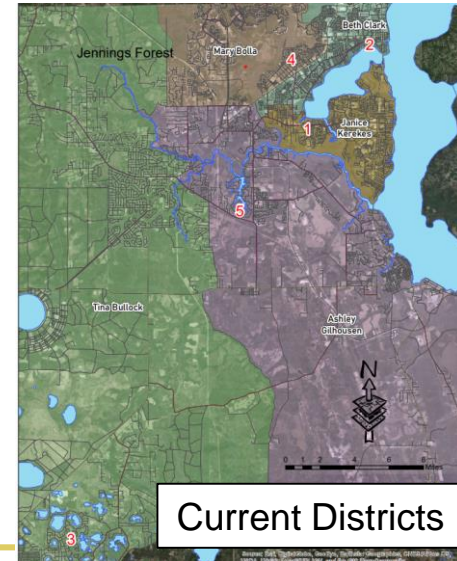


Option 1 Map




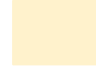


-  District 4 expands South to SR 21 - South of Old Jennings to Blanding “triangle”
-  District 1 expands to Blanding and Henley Road
-  District 2 Expands West beyond Cheswick Oaks Ave.
-  District 5 Expands West to SR 21

***No Board Member seats are affected**

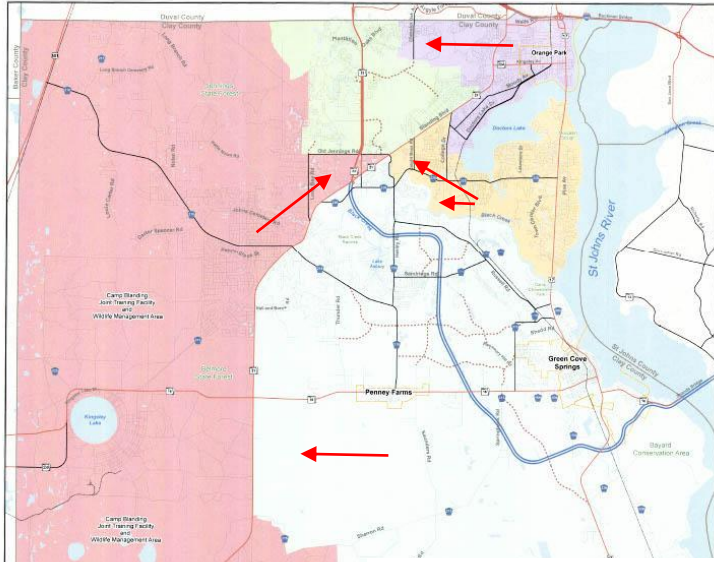




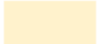


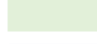
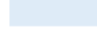
Option 2 Map

-  District 3 expands NE to include South of Old Jennings to Blanding “triangle”
-  District 1 expands to Blanding and Henley Road and South of 220 to Black Creek
-  District 2 Expands West beyond Cheswick Oaks Ave.
-  District 5 Expands West to SR 21

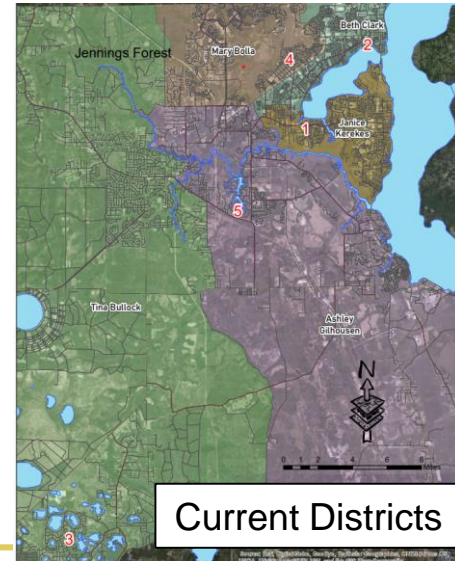
*No Board Member seats are affected



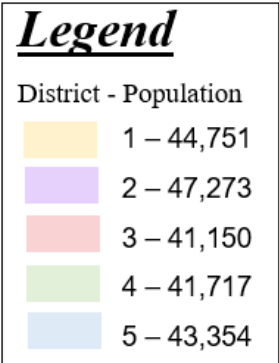
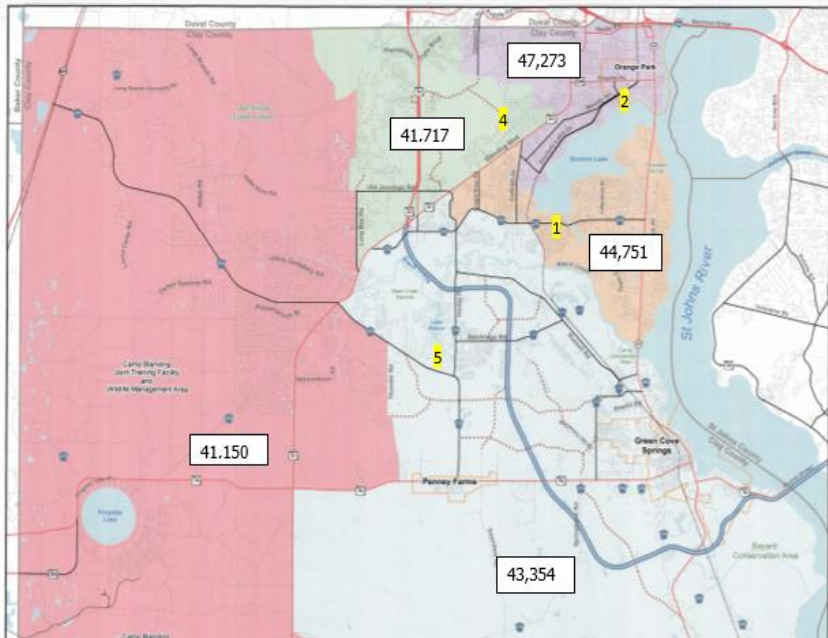
Legend

District - Population	
	1 – 46,980
	2 – 42,273
	3 – 39,811
	4 – 39,609
	5 – 44,522

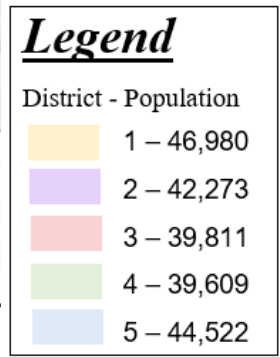
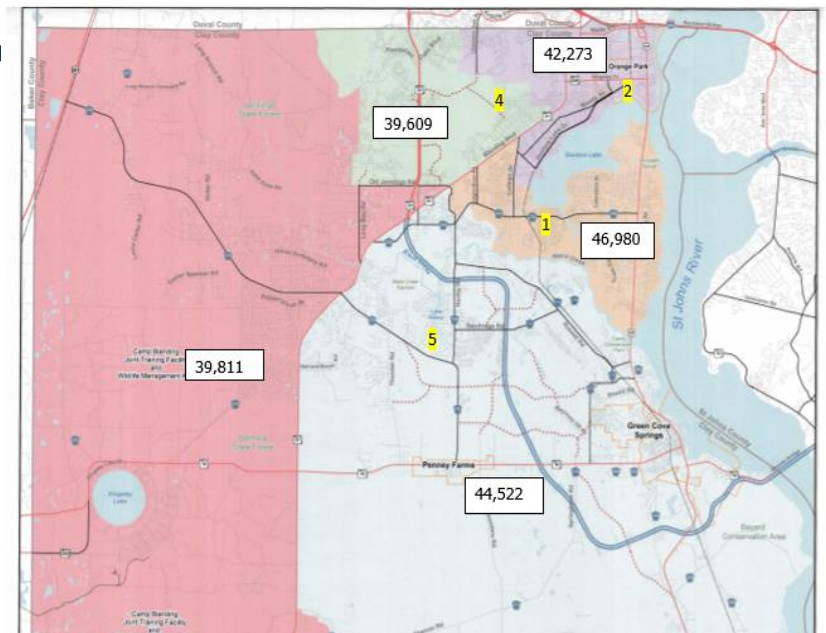
GOAL - 43,649



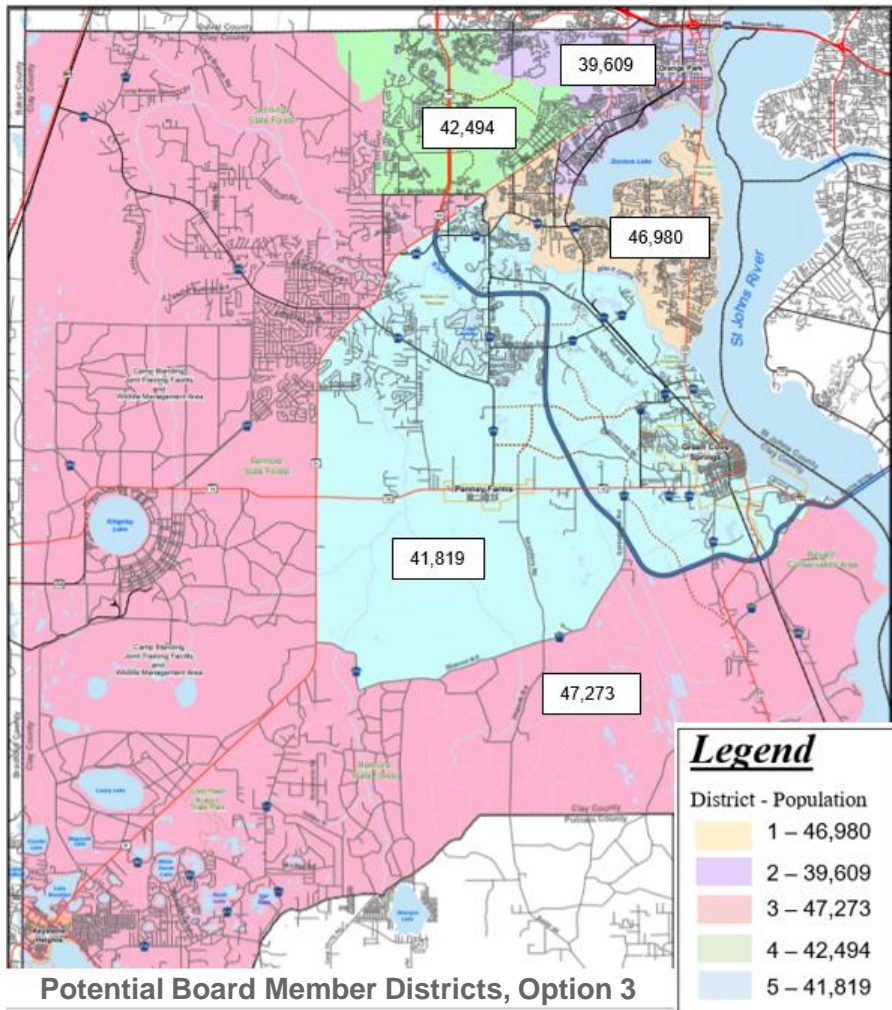
Current Districts



Potential Board Member Districts, Option 1



Potential Board Member Districts, Option 2



Potential Board Member Districts, Option 3



Each district should be within 10% of the optimum population of 43,649

	Option 1	Option 2	Option 3
District 1	2%	7%	2%
District 2	7%	3%	7%
District 3	6%	9.6%	8.3%
District 4	4.6%	10%	4.6%
District 5	.7%	2%	4.1%



Changing the district numbers can be accommodated by Supervisor of Elections

School Board of Clay County

District 1 - Janice Kerekes - 2022*

District 2 - Beth Clark - 2024*

District 3 - Tina Bullock - 2022*

District 4 - Mary Bolla - 2024*

District 5 - Ashley Gilhousen - 2022*

* Next Election

Board of County Commissioners

Corresponding District numbers

District 1- Mike Cella - 2024*

District 3 - Jim Renninger - 2024*

District 4 - Betsy Condon -2024*

District 2 - Wayne Bolla - 2022*

District 5 - Kristen Burke - 2024*