



CLAY EDUCATION  
FOUNDATION

2020-2021

Update

Makayla Buchanan

# Strengthening our Community



- . We continue to invest in 3 key areas to improve public education:
  - Educators
  - Literacy
  - Innovation
- . Added college/career planning

# 2020-2021 Impact:



- **21** teacher-designed projects funded totaling \$20,000, impacting **6,000** students where **3,007** were low-performing
- Professional development provided to **37** educators
- **1,602** teacher shops at new Tools 4 Clay Schools Store representing \$85,000 in school supplies
- **3,162** 8<sup>th</sup>-grade students virtually experienced earth-space science via the MOSH planetarium
- Letters Alive pilot impacted **336** K-2<sup>nd</sup> graders
- **1,074** students participated in the first-of-its-kind Woz STEM career pathways build out

# In 2 Years:



- Doubled student-centered programs
- Added a literacy and college/career planning to our key areas of work
- Raising **\$2** per student in county, which was one of the lowest of all education foundations in the state, to **\$10.80**
  - Goal: \$20 per student
- Community/Non-profit collaboration around our programs to eliminate duplication of services/resources
  - Public education represented at the table
- Went from 0 fundraisers to 3 major fundraisers supported by community





CLAY EDUCATION  
FOUNDATION

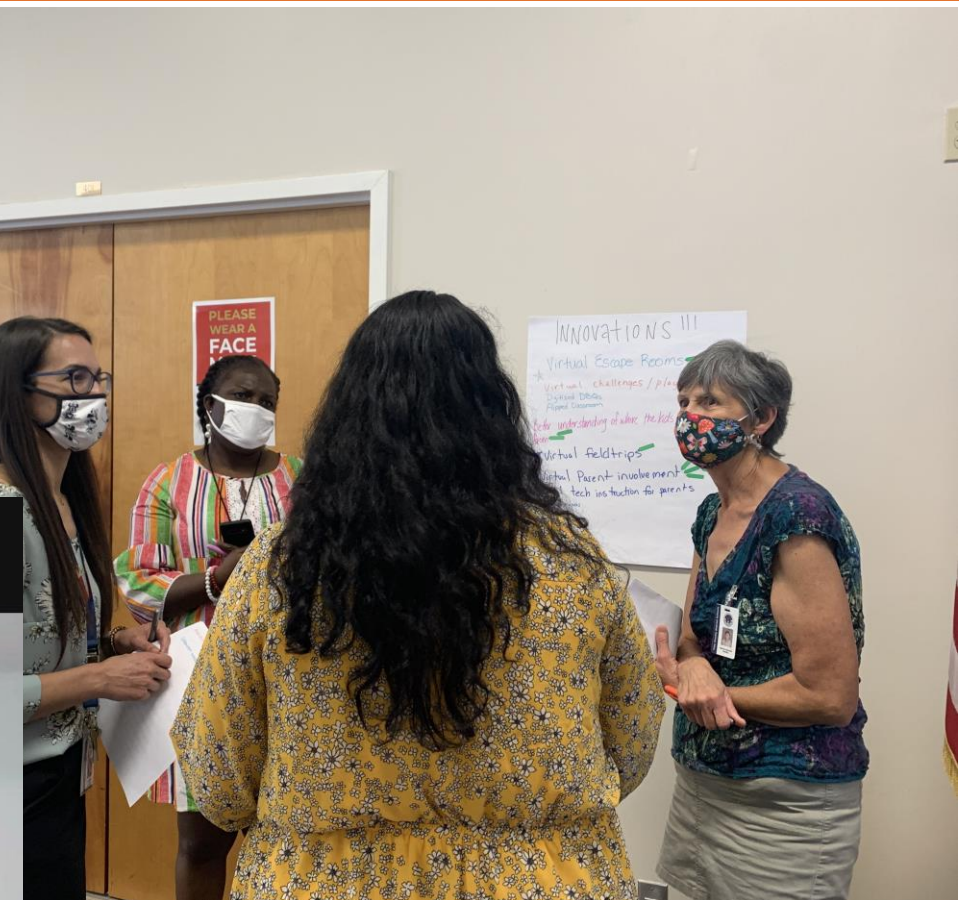
# Educators

# Apple Awards Hosted Virtually



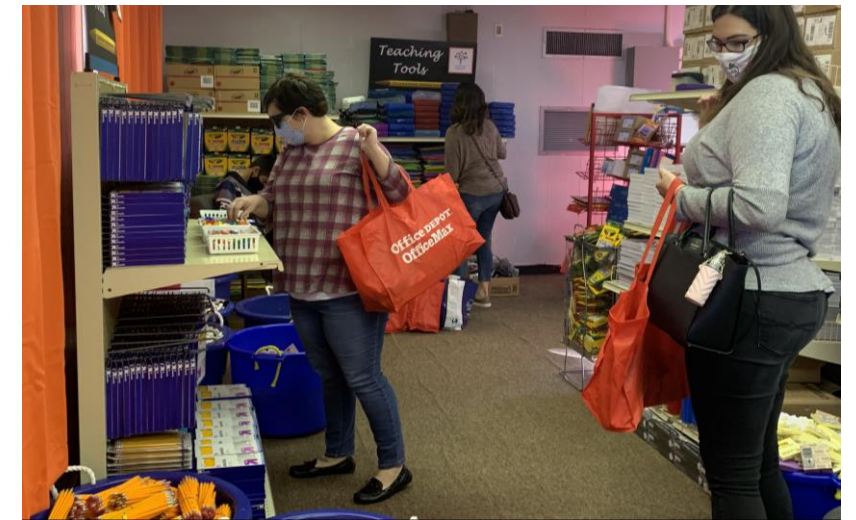


# Clay Teachers LEAD Continues



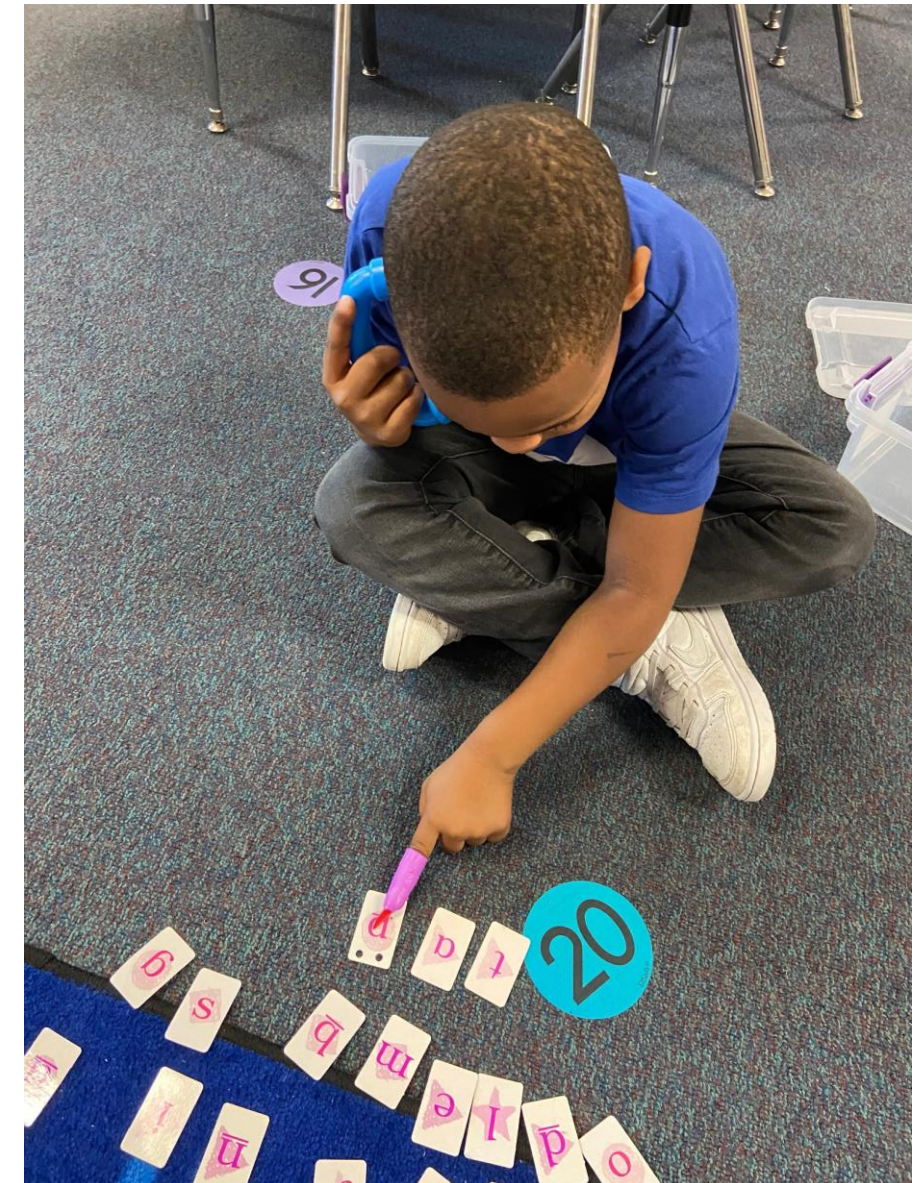
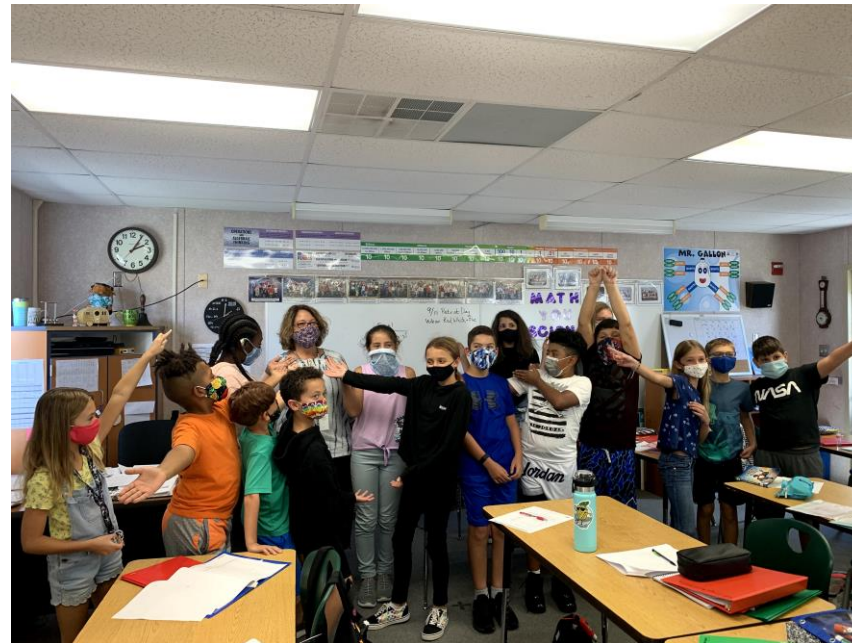
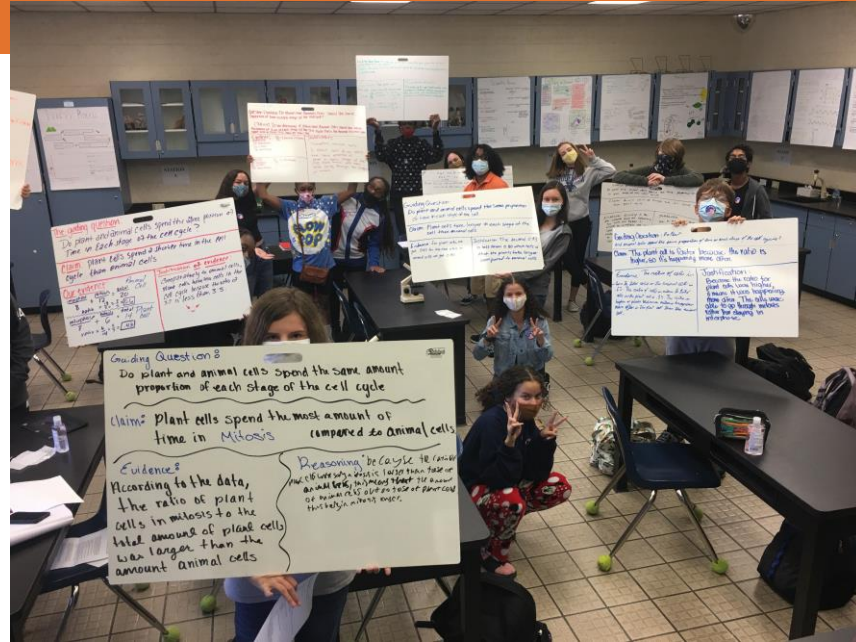


# Tools 4 Clay Schools Gets a Store



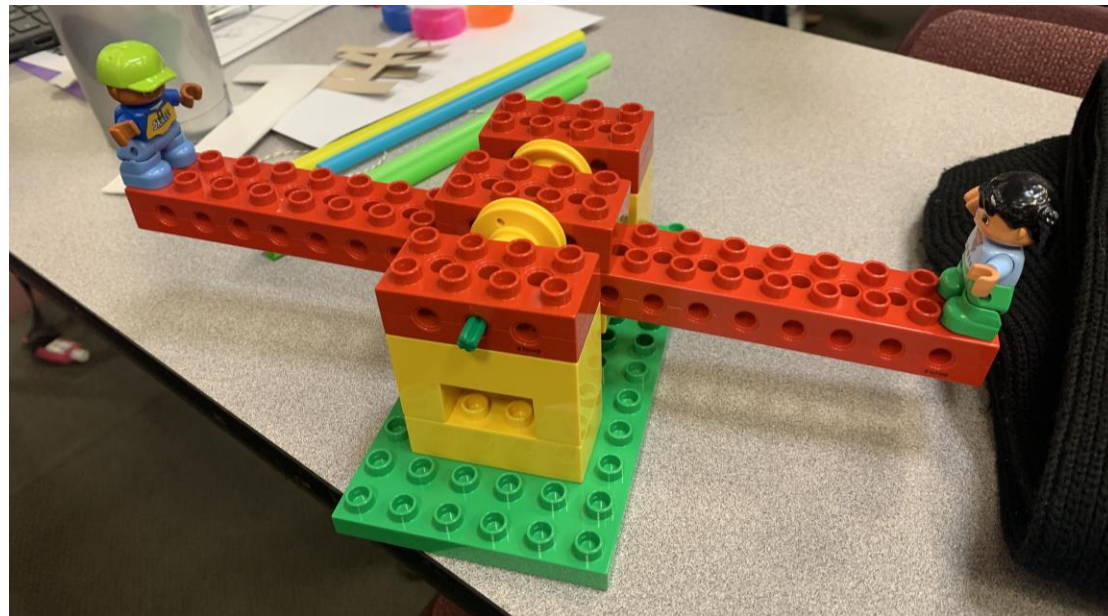


# Funding Innovative Classroom Projects





# Professional Development with Gifts







CLAY EDUCATION  
FOUNDATION

# Literacy

# Let's Read, Clay!



- Learning Alive in 2 pilot elementary schools
- Focus: K-2<sup>nd</sup> grade
- Phonemic awareness/Intervention



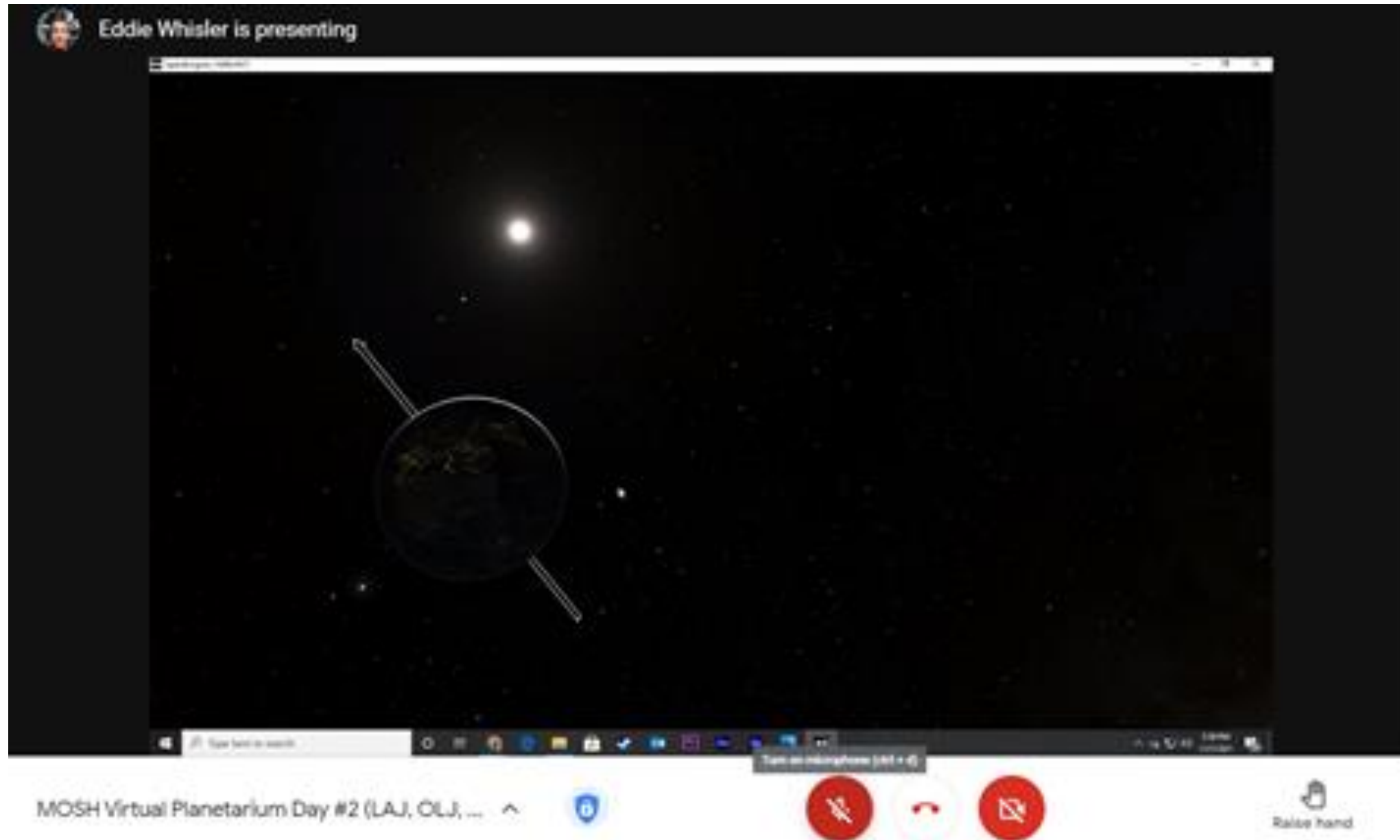




CLAY EDUCATION  
FOUNDATION

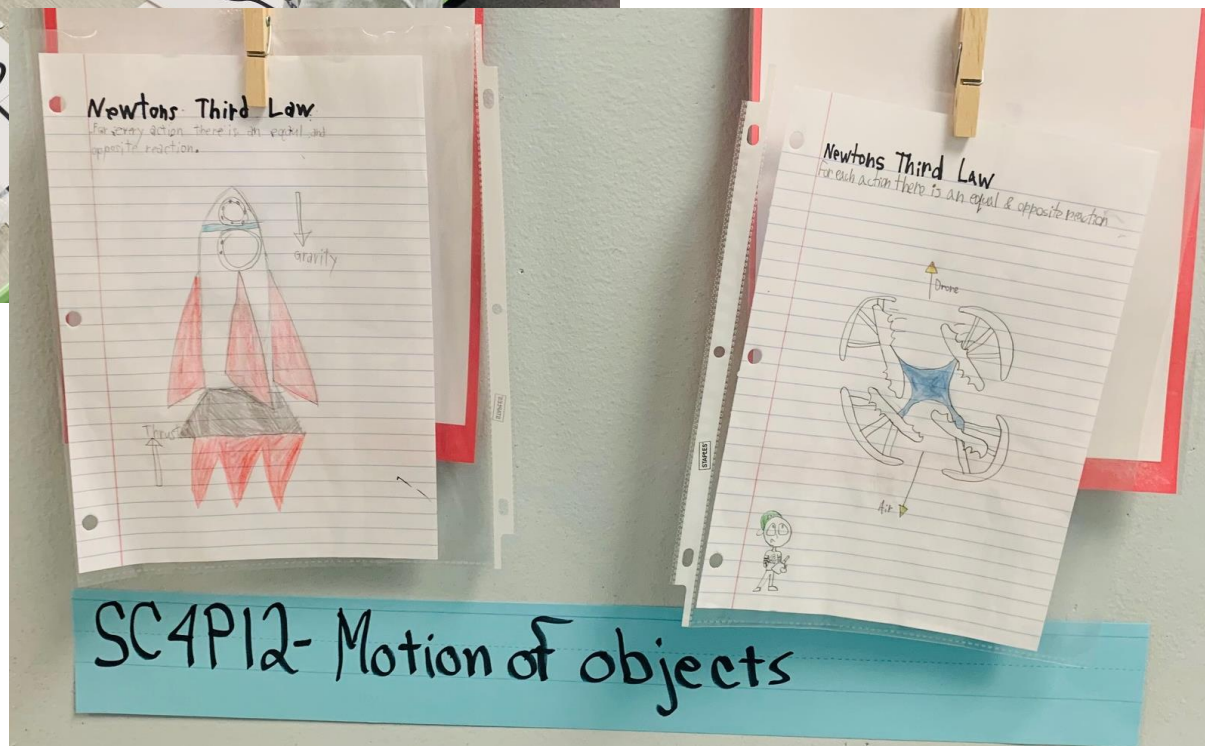
# Innovation

# Virtual MOSH Jax Outreach to 8th Graders



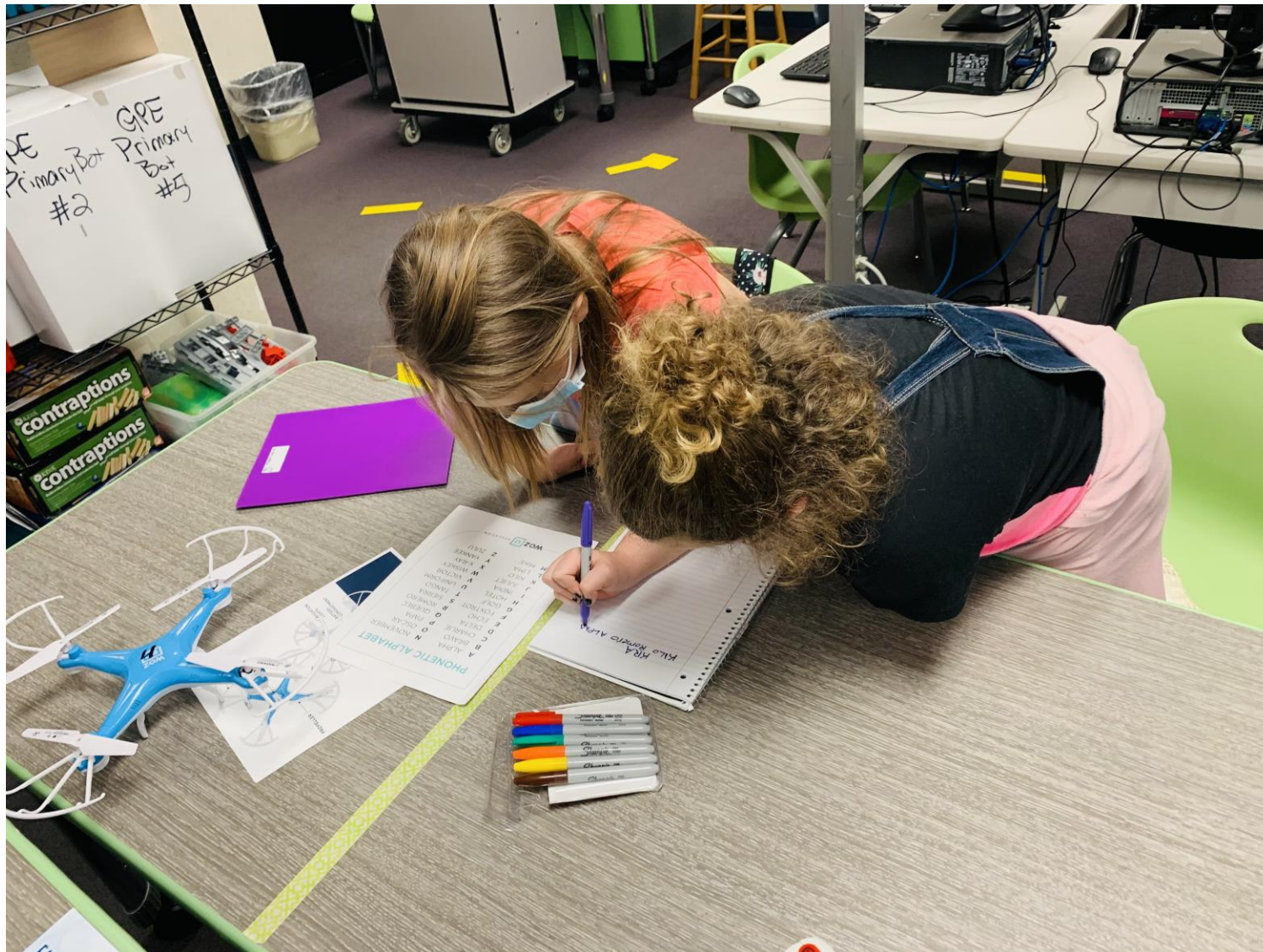


# Building STEM Career Pathways





# Building STEM Career Pathways







CLAY EDUCATION  
FOUNDATION

# Future Ready Clay

# College/Career Planning Resources



- Launched Future Ready Clay site
- 600 site visitors a month
- Hosted 3 college/career planning info nights
- Continue to partner with LCAN, EarnUp, FL Lottery, local colleges, etc.







CLAY EDUCATION  
FOUNDATION

# Looking Forward

# Summer Science Camps



- Replication of successful pilot at PES – mid-year data 20%+ better on standards for that classroom than school/district overall
- 3<sup>rd</sup>–5<sup>th</sup> grade science kits:
  - CEB, GPE, DIS, KHE, and WES
  - Earth Space/Life/Physical Science



# More Replication & Expansion



- Successful Pilot: STEM Career Pathways & Science Kits
  - Goal: Build feeder patterns through all junior high schools to each high school
  - 2021-2022:
    - Funding secured for Keystone Heights and Middleburg for 2021-2022 school year
    - Next target: Green Cove Springs (secured \$20,000 of \$35,100) & Oakleaf
  - 2022-2023:
    - Lakeside and Lake Asbury
- Tools 4 Clay Schools Store Expansion
  - Teachers shop 4 times a year at quarter ends instead of 2

# Other Areas We're Looking At



- School Partnership Initiative
  - Every school has at least one partner to rely on when needing campus clean-ups, volunteers/mentors, & small projects
- Dolly Parton Imagination Library (fiscal agent)
- Piloting Family Loan Libraries
- Aspiring LEADers Program for building the next set(s) of school principals/well-rounded leaders
- Student Success Plans to College/Career Planning Resources
- Clay County Alumni Hall of Fame





**@ClayEducationFoundation**



**@CEFClay**



**@clayeducationfoundation**

**[www.clayeducationfoundation.com](http://www.clayeducationfoundation.com)**