

# Clay County School District

## SY 2018-2019 Redistricting

### Given:

- Redistricting is required due to the opening of Discovery Oaks Elementary School (DOE)
- Grade structure will change at POE and OVE from PK-5 to PK-6
- Grade structure will change at OLJ from 6-8 to 7-8

### Goals:

- Discovery Oaks ES opens with a sustainable student population and no relocatable classrooms
- Reduce enrollment at POE
- Change the grade structure at POE, OVE and OLJ
- Minimize disruption to all students/schools involved
- Minimize bus transportation and provide safe walk/bike routes to school

### Assumptions:

- Schools anticipated to be affected by the redistricting:
  - POE (minus PK-5 students to DOE, plus 6<sup>th</sup> grade students)
  - OVE (minus PK-5 students to DOE, plus 6<sup>th</sup> grade students)
  - OLJ (minus 6<sup>th</sup> grade students)
  - DOE (plus PK-6 students)
- Controlled Open Enrollment (COE) may not apply to schools involved in redistricting
- Students may not be “Grandfathered in” at POE or OVE

### Transportation concerns:

- Crossing guards at Oakleaf Plantation (OLP) Parkway (4 lane divided road, 45 mph speed limit)
- Traffic signal at OLP Parkway
- School bus left turn across OLP Parkway



# Discovery Oaks ES Attendance Zone Option 1

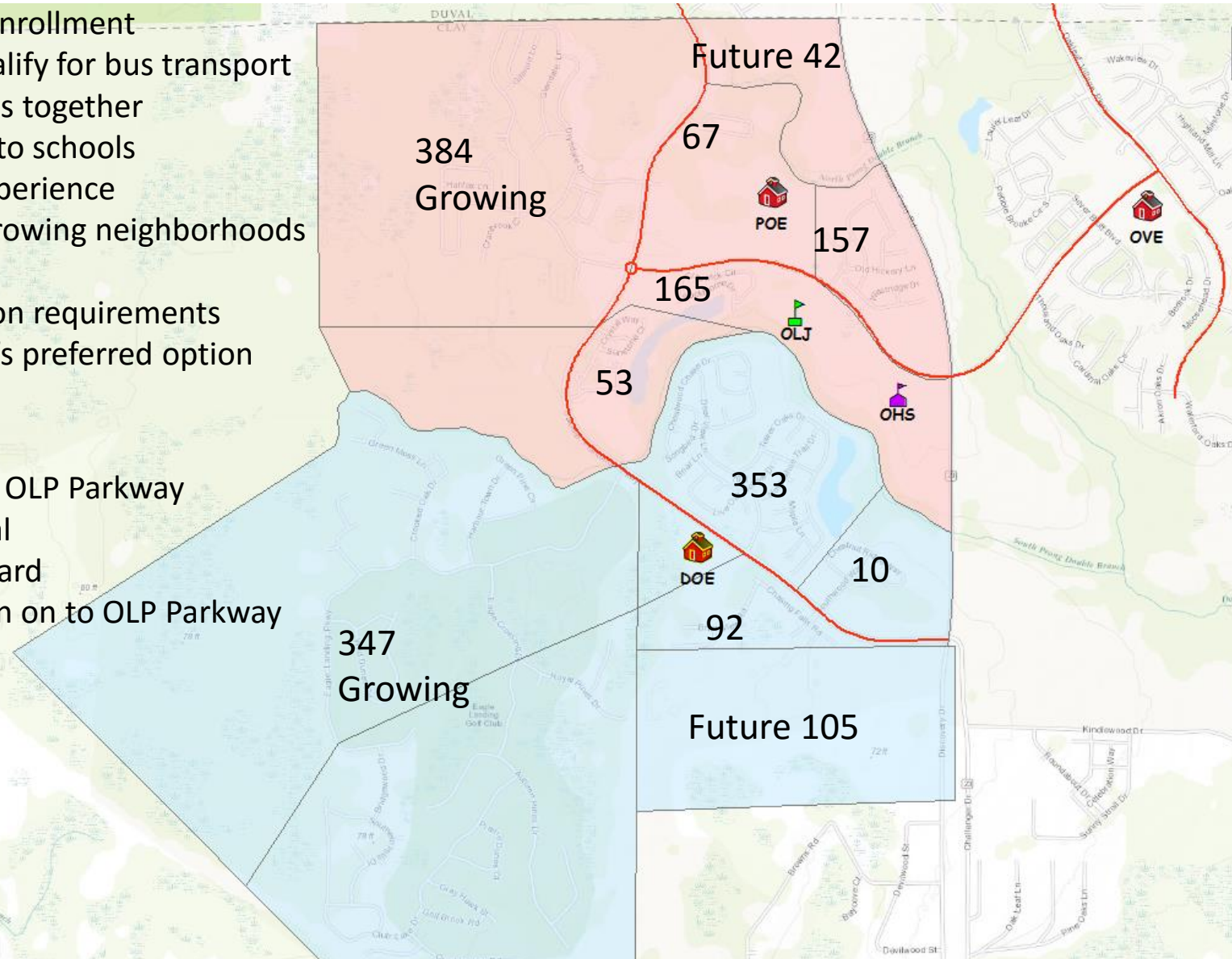
Recommended

## Pros:

- DOE relieves POE's enrollment
- Students already qualify for bus transport
- Keeps neighborhoods together
- Boundary proximity to schools
- POE and DOE will experience equal growth: two growing neighborhoods in each zone
- Reduce transportation requirements
- Transportation Dept's preferred option

## Cons:

- Walkers/bikers cross OLP Parkway
- Requires traffic signal
- Requires crossing guard
- Requires bus left turn on to OLP Parkway



DOE attend: 802

Includes:  
124 (6th graders) from OLJ

POE attend: 826

Includes:  
144 (6th graders) from OLJ  
12 (6th graders) from OVE

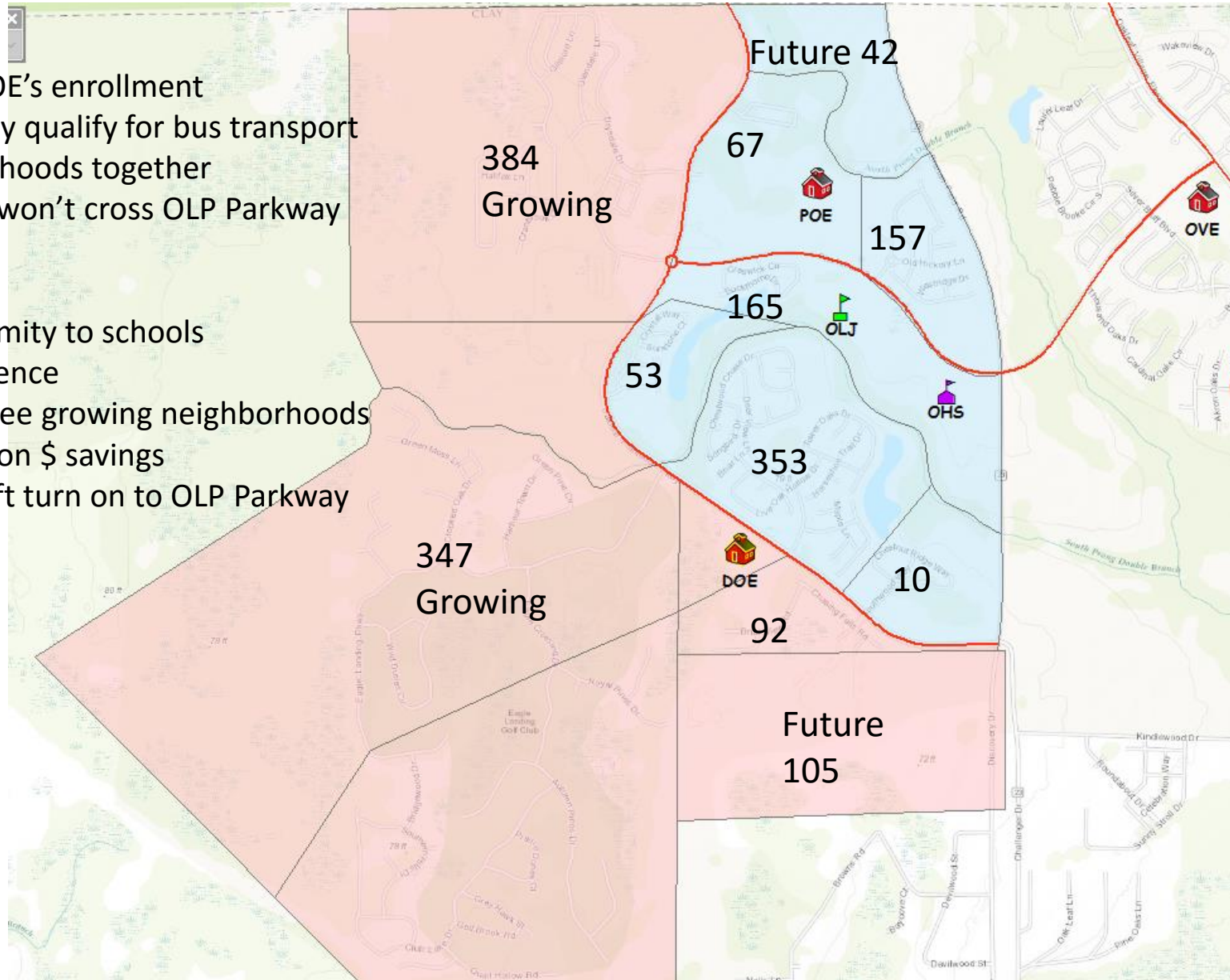
# Discovery Oaks ES Attendance Zone Option 2

## Pros:

- DOE relieves POE's enrollment
- Students already qualify for bus transport
- Keeps neighborhoods together
- Walkers/bikers won't cross OLP Parkway

## Cons:

- Boundary proximity to schools
- DOE will experience growth with three growing neighborhoods
- No transportation \$ savings
- Requires bus left turn on to OLP Parkway



DOE attend: 823

Includes:  
128 (6<sup>th</sup> graders) from OLJ

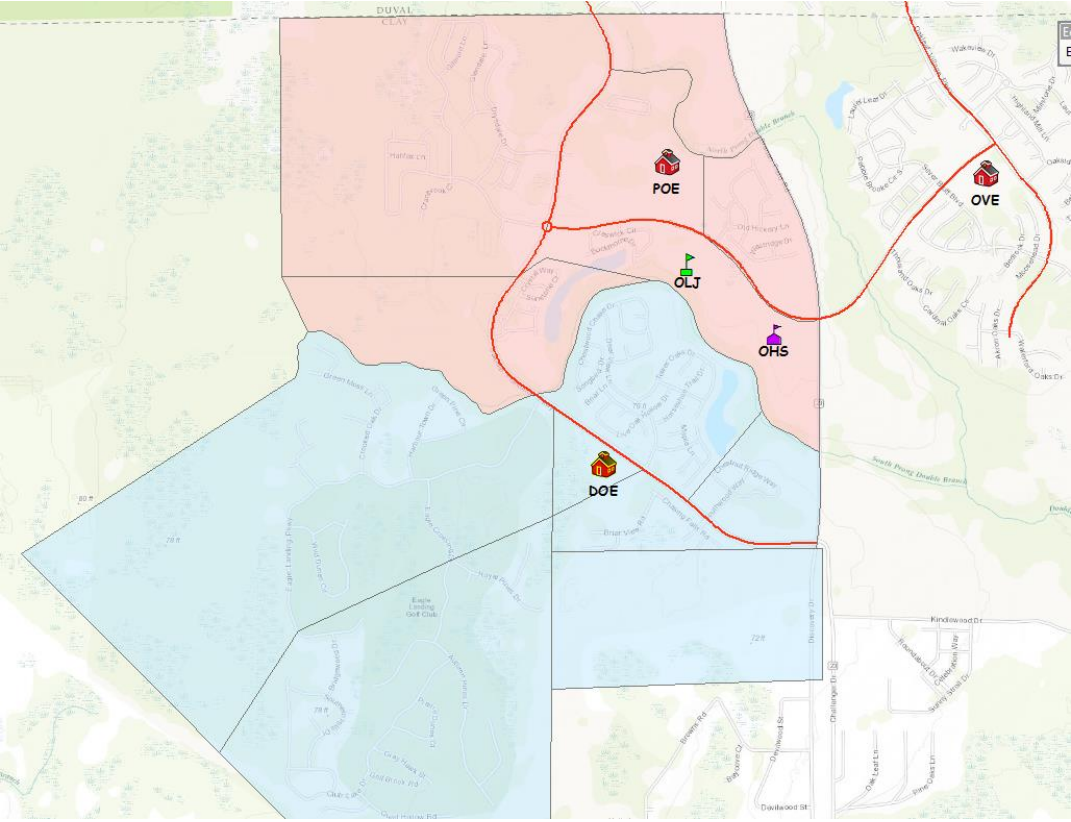
POE attend: 805

Includes:  
145 (6<sup>th</sup> graders) from OLJ  
12 (6<sup>th</sup> graders) from OVE

# Discovery Oaks ES Attendance Zone side by side comparison

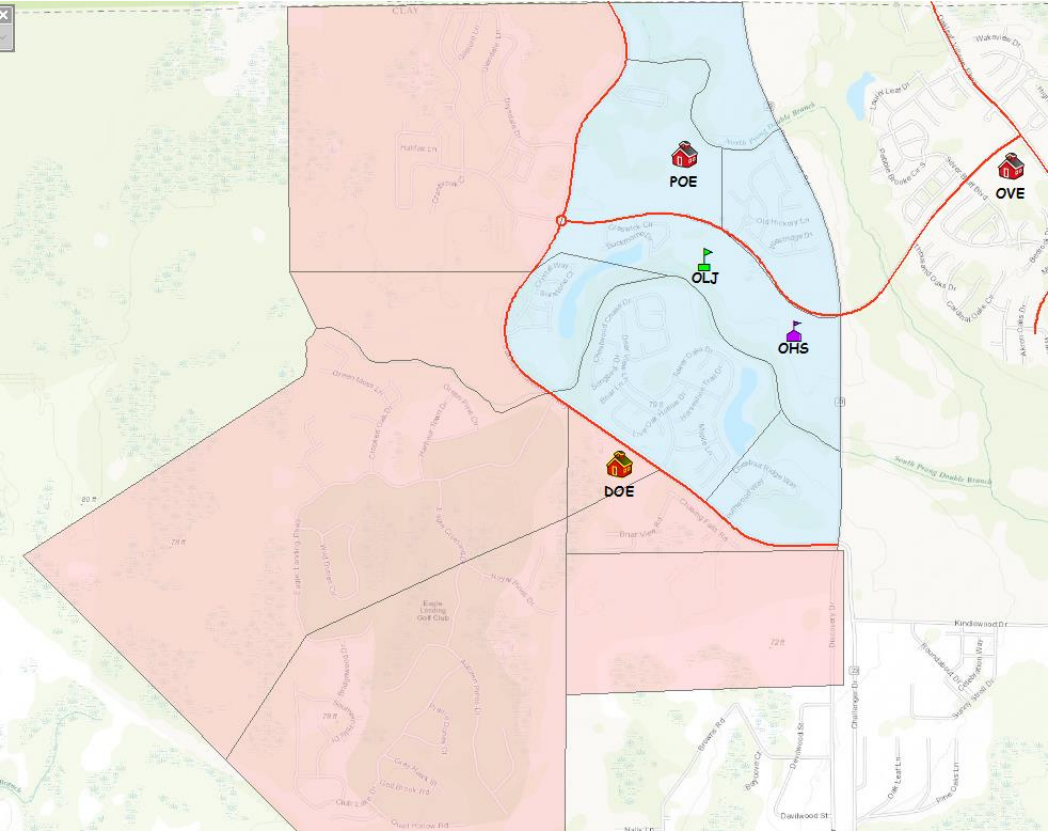
Option 1

POE attend: 802  
DOE attend: 826



Option 2

POE attend: 823  
DOE attend: 805



## SY 2018-2019 Redistricting

Goals	Option 1	Option 2
Enrollment at open of DOE (balanced and sustainable)	✓	✓
Reduce enrollment at POE and OLJ	✓	✓
Change grade structure at POE, OVE and OLJ	✓	✓
Minimize disruption to students	✓	✓
Minimize transportation (\$) and provide safe walk/bike paths	✓	
Neighborhood growth balanced	✓	

Enrollment projections based on students residing in proposed zones:

	Current enrollment	Option 1	Option 2	
<b>POE</b>	1382	802	823	
<b>OVE</b>	892	995	995	
<b>DOE</b>	N/A	826	805	
<b>OLJ</b>	1546	1103	1103	*OLJ loses entire 6 <sup>th</sup> grade

# Community Engagement Plan for Rezoning and Discovery Oaks ES

## November 14<sup>th</sup> (6 pm ): Informational meeting

Oakleaf Junior High cafeteria

Why?, what? and metrics of Discovery Oaks ES

- Present Option 1 (pros and cons)
- Present Option 2 (pros and cons)
- Gather public feed back

Superintendent Davis

Staff attending:

Michael Kemp

James Connell

Tommy Fitzpatrick

Jim Fossa

## Advertise opening of Discovery Oaks ES for Fall of 2018

- Clay Today, Clay County leader
- School news papers and Oakleaf Community paper
- CCDS Facebook and/or other social media outlets
- PSA radio? WOKV
- Eagle Landing, Forest Hammock other affected subdivisions news letters
- Others?



# DISCOVERY OAKS ELEMENTARY SCHOOL

## ELEMENTARY SCHOOL 'Y' ORANGE PARK, FLORIDA CLAY COUNTY DISTRICT SCHOOLS



**ADDISON DAVIS**  
SUPERINTENDENT OF SCHOOLS

**JANICE KEREKES**  
DISTRICT 1

**CAROL STUDDARD**  
DISTRICT 2



ARCHITECT  
**BHIDE & HALL ARCHITECTS, P.A.**  
LIC. NO. AAC000569

**BETSY CONDON**  
DISTRICT 3

**MARY BOLLA**  
DISTRICT 4

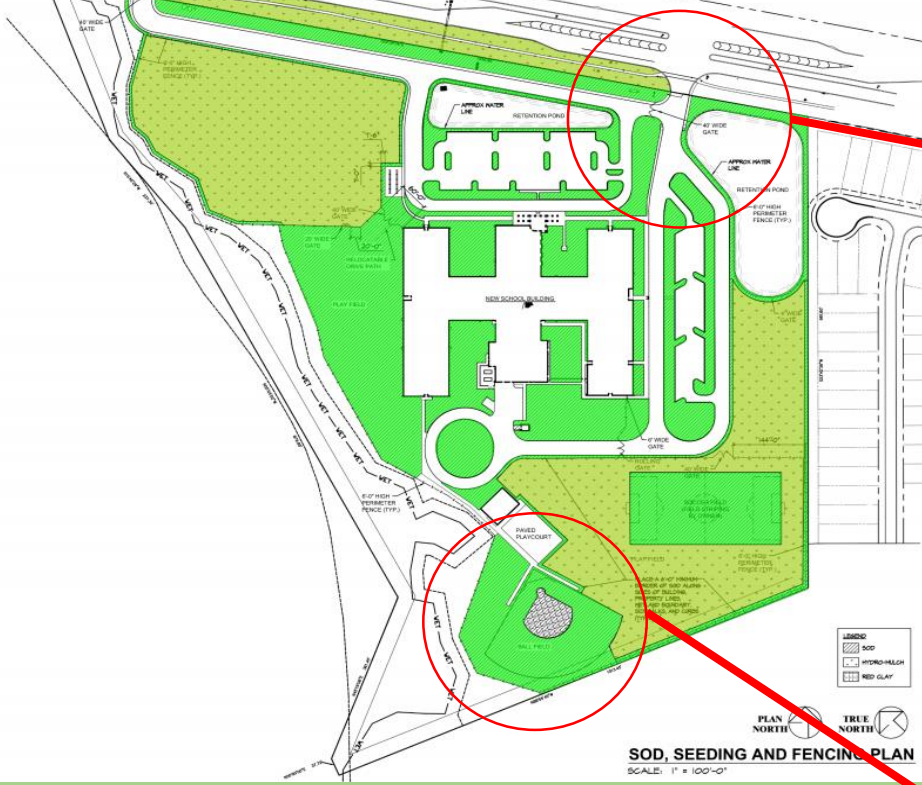
**ASHLEY GILHOUSEN**  
DISTRICT 5

MICHELE AGEE, P.E., P.A.  
DILIP L. KOTHEKAR, P.E., INC.  
HADDAD ENGINEERING, INC.  
HADDAD ENGINEERING, INC.

CIVIL ENGINEERS  
STRUCTURAL ENGINEERS  
ELECTRICAL ENGINEERS  
MECHANICAL & PLUMBING ENGINEERS

CERT. NO. 26142  
CERT. NO. CA-5870  
CERT. NO. CA-4000  
CERT. NO. CA-4000

GENERAL CONTRACTORS  
**PARRISH McCALL CONSTRUCTORS, INC.**



## School Metrics

- Site: 33.3 acres
- Grades: PK-6
- Capacity: 862
- Building components: over 114,000 sqft
- Classrooms: 42
- ESE rooms: 4
- Labs: 2
- Music room
- Cafeteria/auditorium