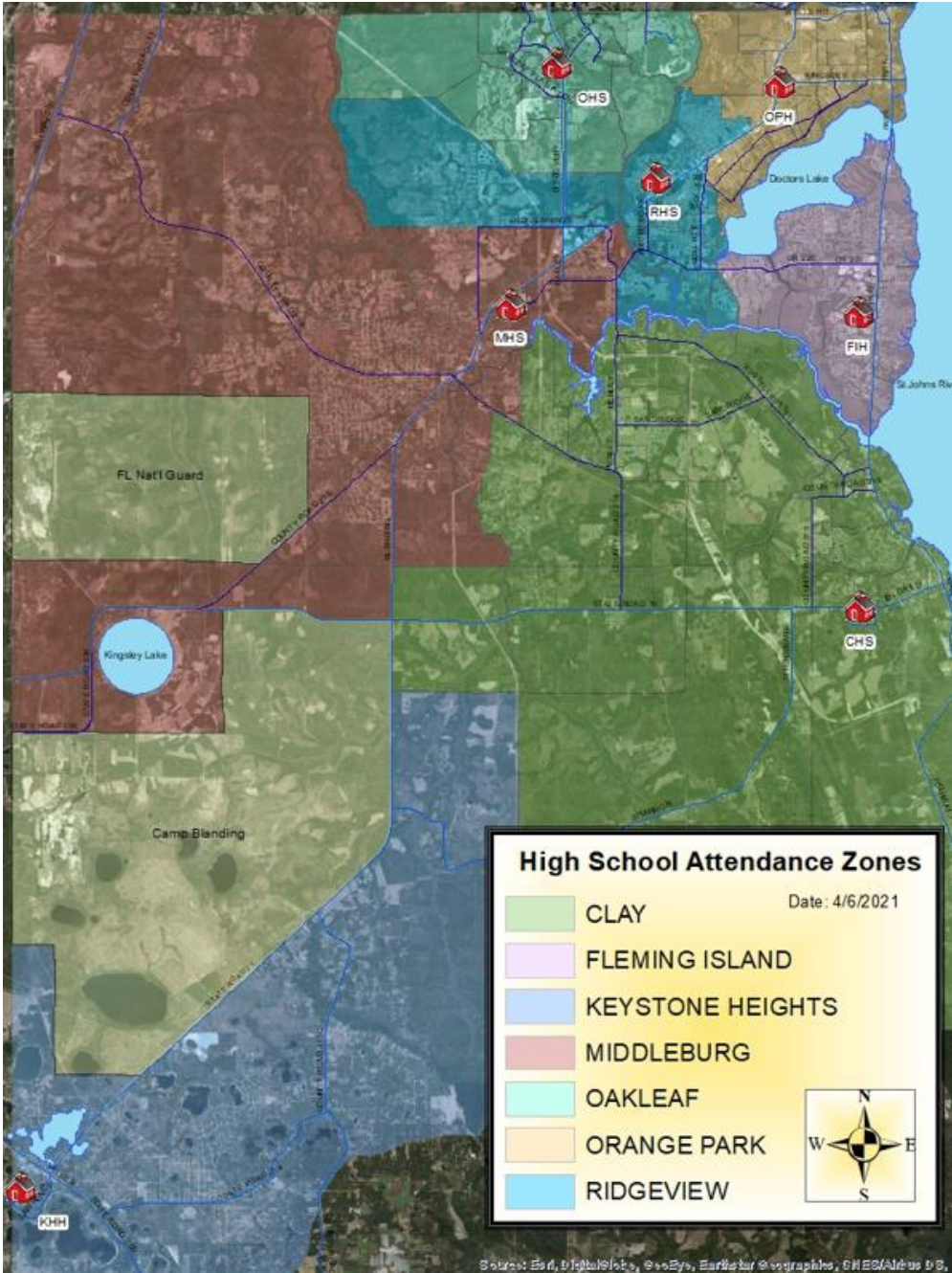


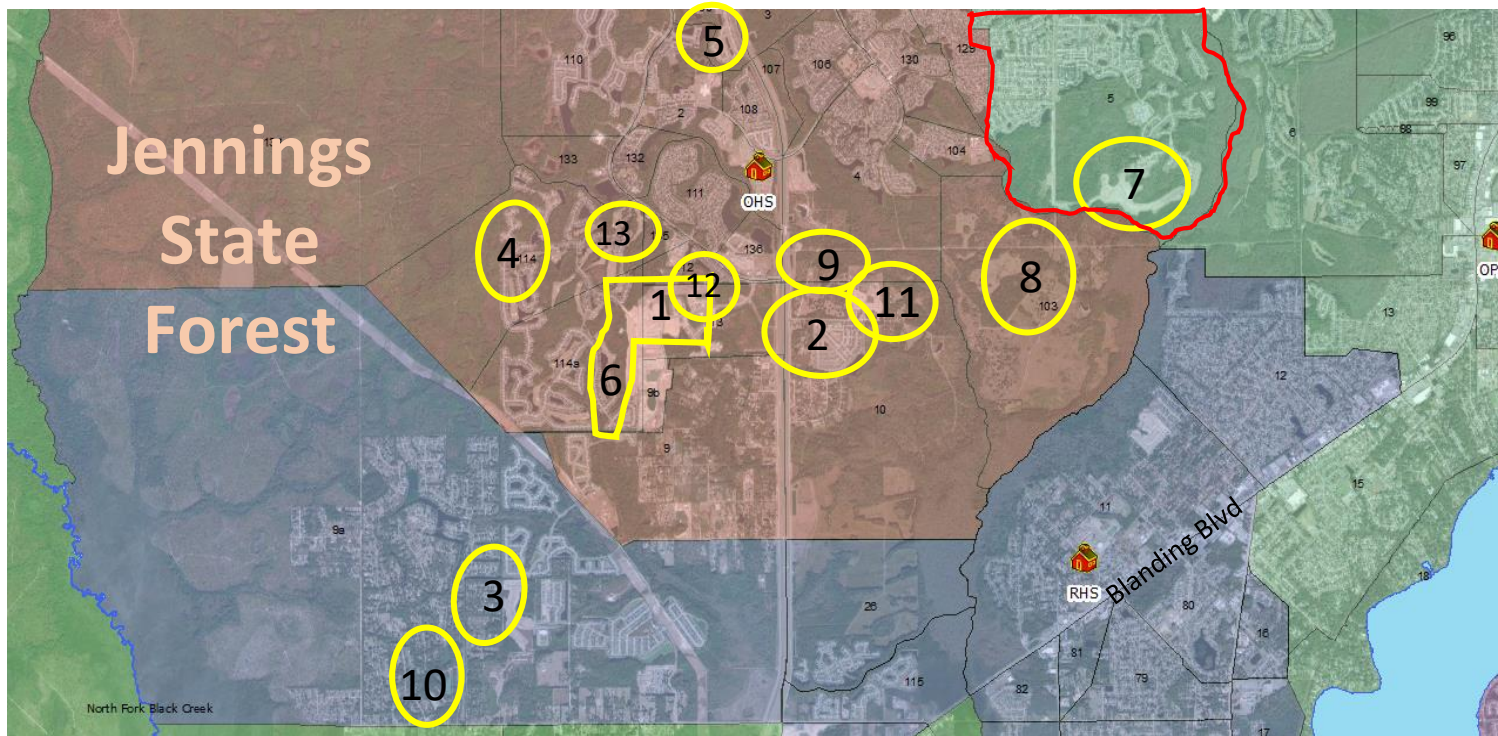
Senior High School Attendance Boundaries (all schools current)

OHS Study

High School	Percent Capacity
Clay High	88.8%
Fleming Island HS	81.6%
Keystone Sr/Jr	91.1%
Oakleaf HS	110.6%
Orange Park HS	68.1%
Ridgeview HS	80.5%
Middleburg HS (cafeteria)	98% 73%



Attendance Boundary and **planned** growth Oakleaf High School



OHS: 2459 cap

Attend: 2720

Current: OHS 110 % (Projected growth \approx 230)

Status Quo: OHS 117 % (growing)

Portables on Campus: 38

Area outlined in red is in the OHS
attendance zone
Proposal: Point the area in Red to OPH

Growth (OHS)

1) Grey Hawk	3 years
2) Kindlewood	1 year
3) Pine Ridge	4 years (RHS)
4) Eagle Landing	2 years
5) Arbor Mill	6 mos.
6) Oakland Hills	2 years
7) Wilford Preserve	3 years
8) Cheswick Oaks	5 years
9) Cameron Oaks	4 years
10) Fox Meadow unit 8A	3 years (RHS)
11) Kindlewood East	3 years
12) Integra Apartments	2 years
13) Towne Homes at Plantation Oaks	

To OPH

Area	Number of students
5	459 (Grades 9-12)

Attendance Boundary Change for Oakleaf HS and Orange Park HS

OHS: 2459 cap / 2720

OPH: 2343 cap / 1595

Current: OHS 110% (Projected growth \approx 230)
OPH 68% (809 \approx available capacity)

Remedy: Area 5 to OPH \approx 452 students

Status Quo: OHS 117% (growing)
OPH 69%

Result: OHS 84% (*allows for growth*)
OPH 85.2%

Nearby Neighborhoods to OPH:

- Olde Sutton
- Spencer
- Holly Parke
- Cranes Landing
- Hammock Grove
- Brittany Bluff
- Water Mill
- Plantation Village



**note: Students currently transported to OHS (5.2 miles)
will also be transported to OPH (6.2 miles)*

To OPH

Area	Number of students
5	342 (Grades 9-11)

Attendance Boundary Change for Oakleaf HS and Orange Park HS

OHS: 2459 cap / 2720

OPH: 2343 cap / 1595

Current: OHS 110% (Projected growth \approx 230)

OPH 68% (809 \approx available capacity)

Remedy: Area 5 to OPH \approx 342 students

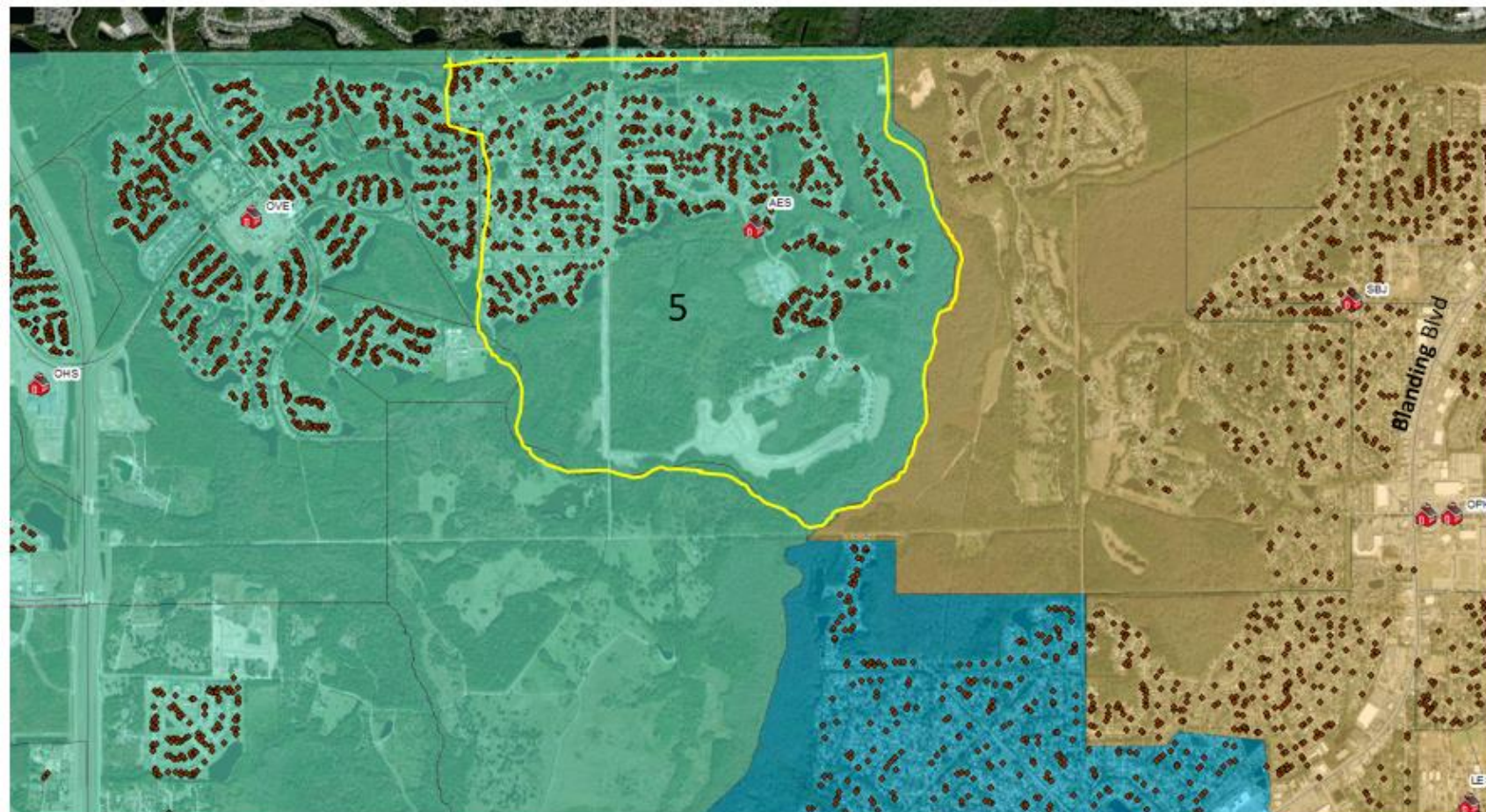
Status Quo: OHS 117% (growing)

OPH 69%

Result: OHS 96.7% (*allows for growth*)
OPH 83%

Nearby Neighborhoods to OPH:

- Olde Sutton
- Spencer
- Holly Parke
- Cranes Landing
- Hammock Grove
- Brittany Bluff
- Water Mill
- Plantation Village



**note: Students currently transported to OHS (5.2 miles)
will also be transported to OPH (6.2 miles)*

OPH Option

Area	Number of students
5	459 (Grades 9-12)

Attendance Boundary Change for Oakleaf HS and Orange Park HS

Current: OHS 110% (Projected growth \approx 230)
OPH 65% (809 \approx available capacity)

Remedy: Area 5 to OPH \approx 459 students

Status Quo: OHS 115% (growing)
OPH 65%

Result: OHS 92%
OPH 87%

Neighborhoods to OPH:

- Olde Sutton
- Spencer
- Holly Parke
- Cranes Landing
- Hammock Grove
- Brittany Bluff
- Water Mill
- Plantation Village



**note: Students currently transported to OHS (5.2 miles)
will also be transported to OPH (6.2 miles)*

To OPH

Area	Number of students
5	242 (9 th and 10 th)

New slide less 9th and 10th grade

Attendance Boundary Change for Oakleaf HS and Orange Park HS

OHS: 2459 cap / 2478

OPH: 2343 cap / 1837

Current: OHS 110% (Projected growth \approx 230)
OPH 68% (809 \approx available capacity)

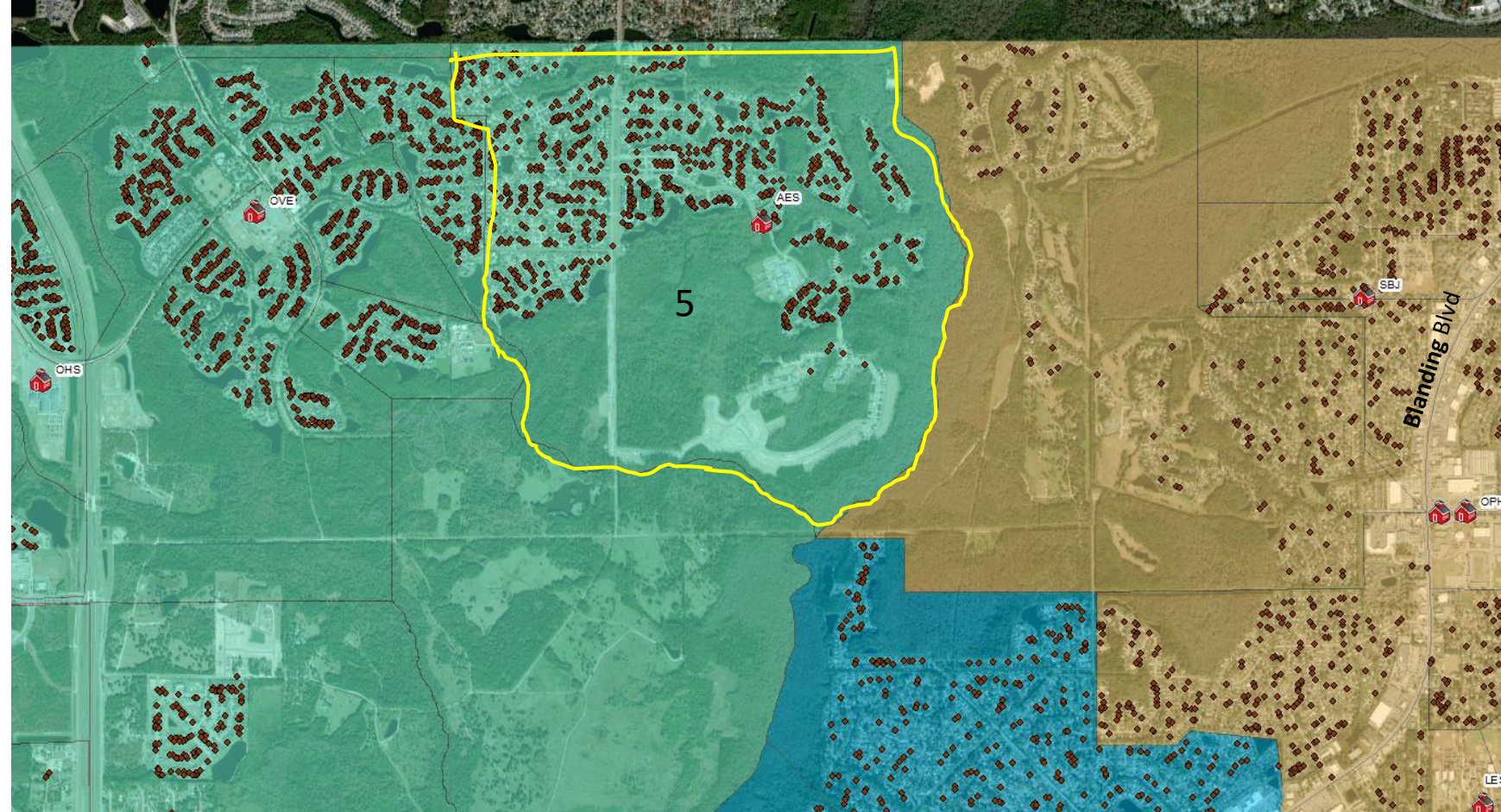
Remedy: Area 5 to OPH \approx 242 students

Status Quo: OHS 117% (growing)
OPH 69%

Result: OHS 100%
OPH 78%

Nearby Neighborhoods to OPH:

- Olde Sutton
- Spencer
- Holly Parke
- Cranes Landing
- Hammock Grove
- Brittany Bluff
- Water Mill
- Plantation Village



**note: Students currently transported to OHS (5.2 miles)
will also be transported to OPH (6.2 miles)*

To OPH

Area	Number of students
5	136 (9 th grade only to move to OPH)

New slide 9th grade only move to OPH in 2022

Attendance Boundary Change for Oakleaf HS and Orange Park HS

OHS: 2459 cap / 2720

OPH: 2343 cap / 1595

Current: OHS 110% (Projected growth \approx 230)

OPH 68% (809 \approx available capacity)

Remedy: Area 5 to OPH \approx 136 students

Status Quo: OHS 117% (growing)

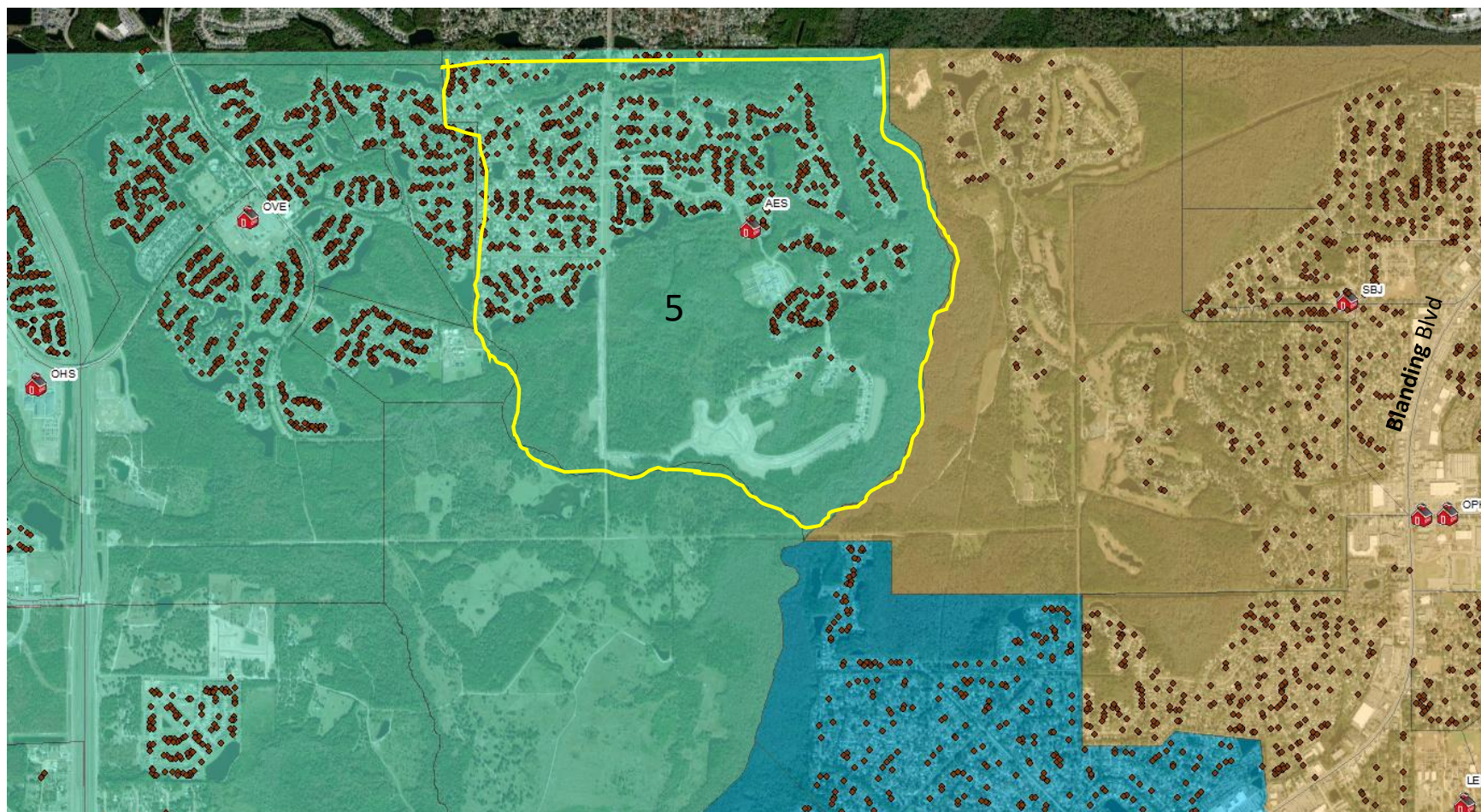
OPH 69%

Result: OHS 105%

OPH 74%

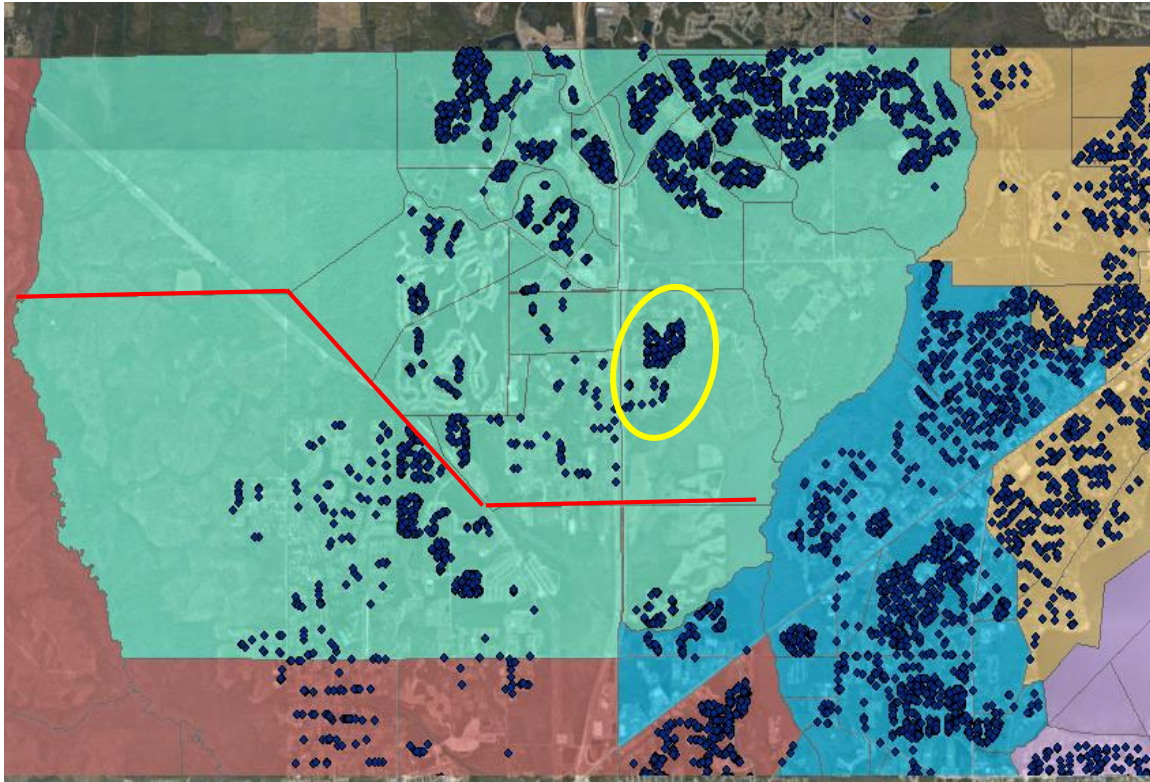
Nearby Neighborhoods to OPH:

- Olde Sutton
- Spencer
- Holly Parke
- Cranes Landing
- Hammock Grove
- Brittany Bluff
- Water Mill
- Plantation Village

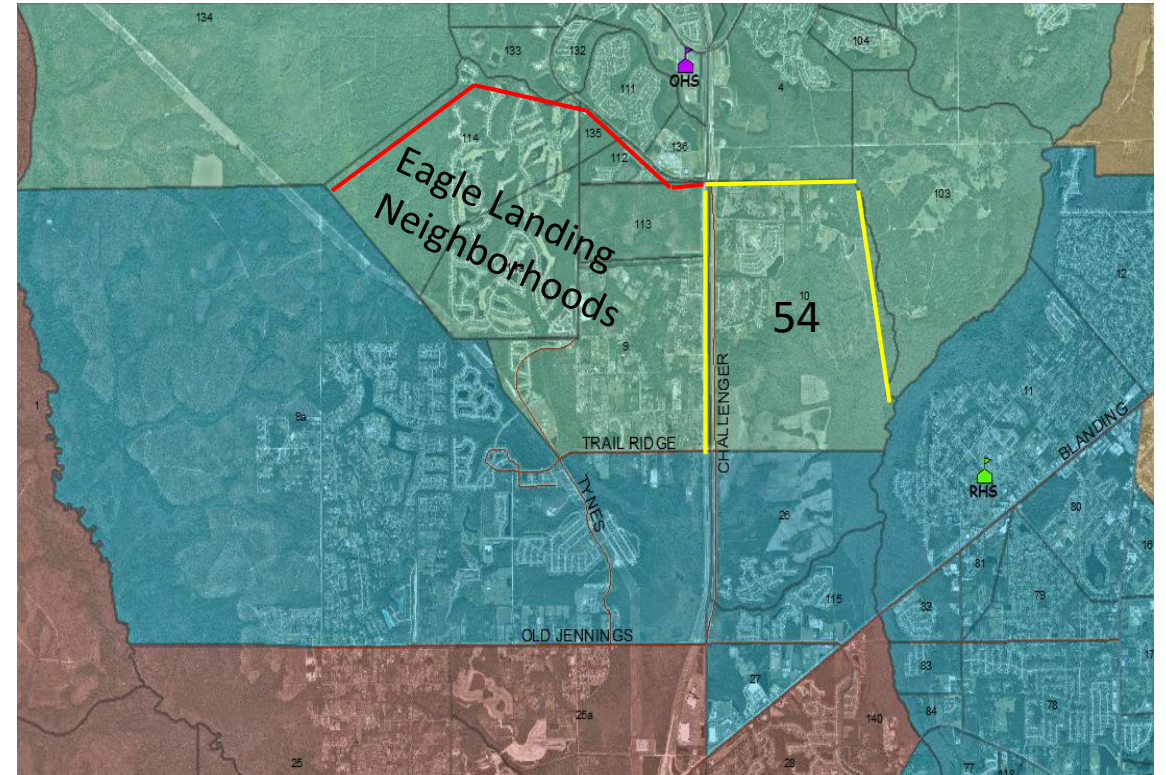


**note: Students currently transported to OHS (5.2 miles)
will also be transported to OPH (6.2 miles)*

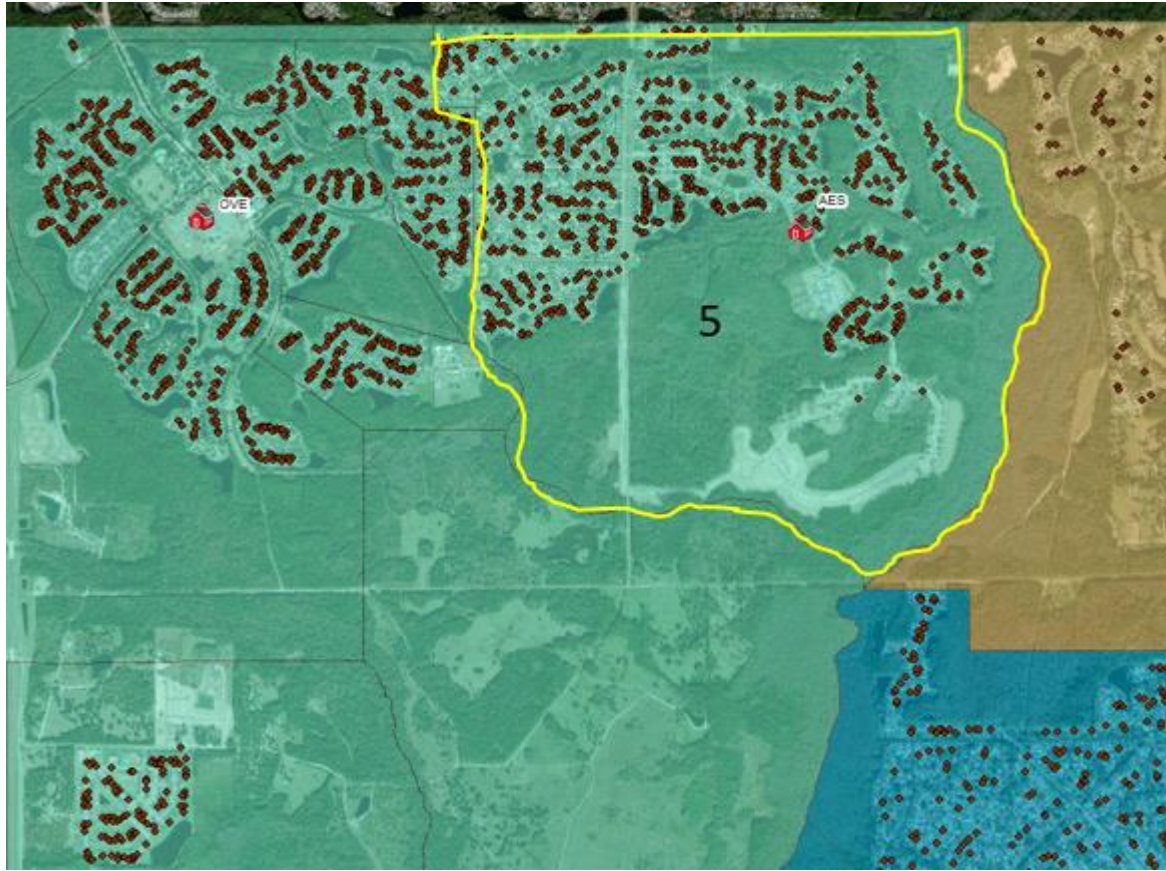
Other options to RHS from OLH



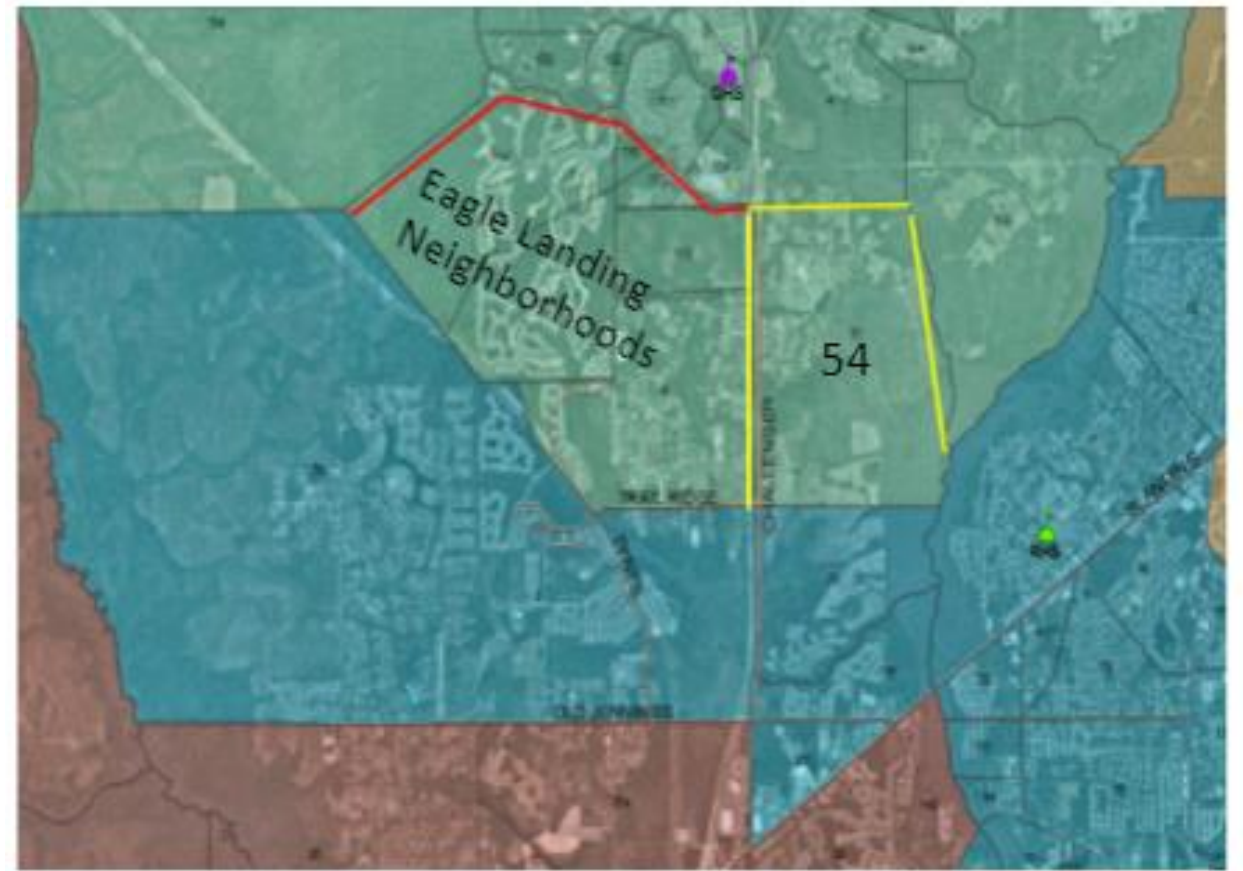
Potential neighborhoods to RHS
-Cameron Oaks, Kindlewood (54 students)



Kindlewood: North of Trail Ridge, East of
FCX, South of Kindlewood Dr (54 students)



Argyle area to OPH
-Study area 5 (342 students)



Neighborhoods to RHS
-Cameron Oaks, Kindlewood (54 students)

Total students from OHS: 396
immediate effect: OHS goes to 94%
capacity

Attendance Boundary Change for Oakleaf HS and Orange Park HS

Area	Number of students
5	452

OHS: 2459 cap

OPH: 2343 cap

Current: OHS 110% (Projected growth \approx 230)
OPH 68% (809 \approx available capacity)

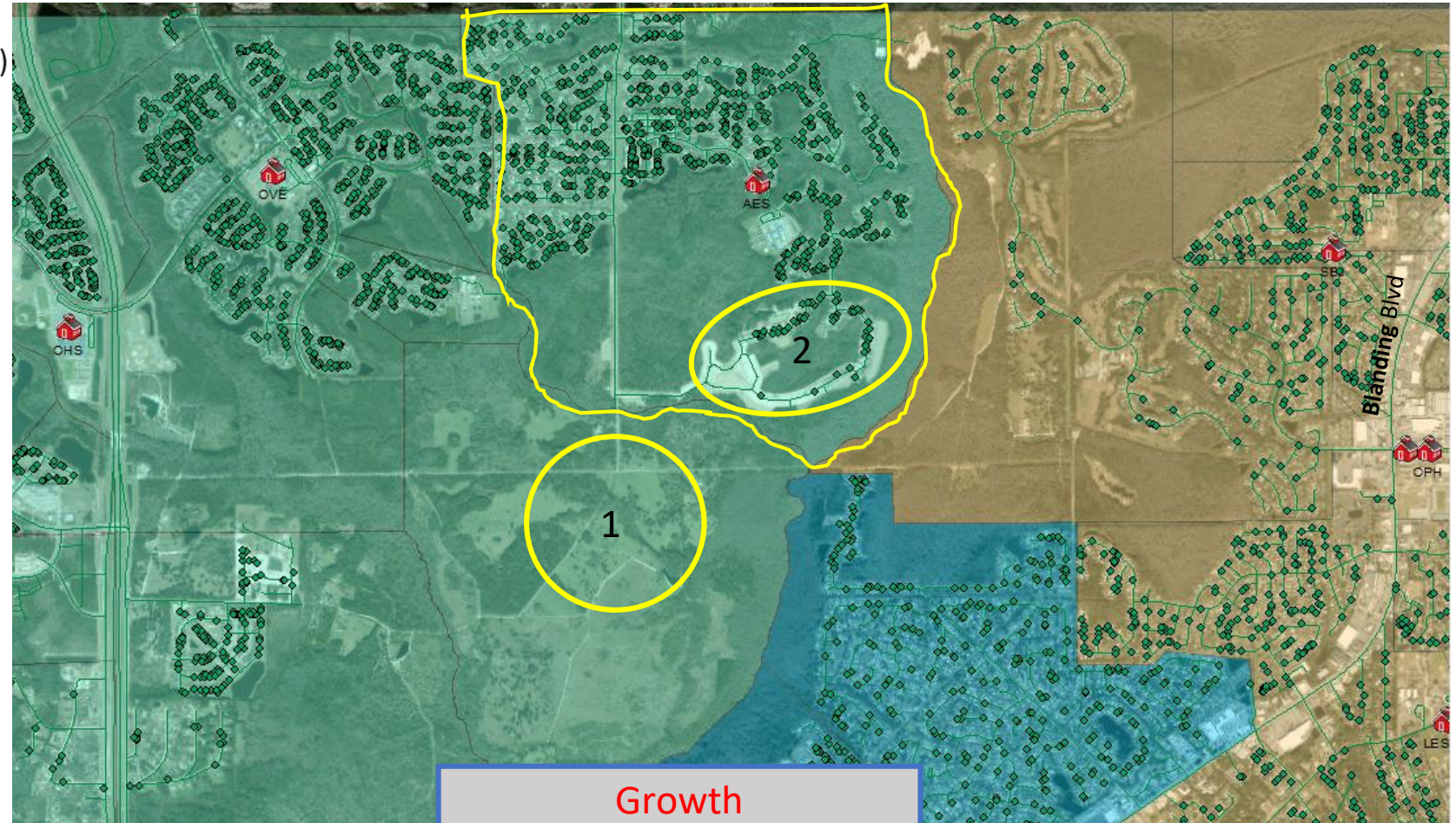
Remedy: Area 5 to OPH \approx 452 students

Status Quo: OHS 117% (growing)
OPH 69%

Result: OHS 84%
OPH 83.5%

Neighborhoods to OPH:

- Olde Sutton
- Spencer
- Holly Parke
- Cranes Landing
- Hammock Grove
- Brittany Bluff
- Water Mill
- Plantation Village



Growth

- 1) Cheswick Oaks (OLH)
- 2) Wilford Preserve (OPH)

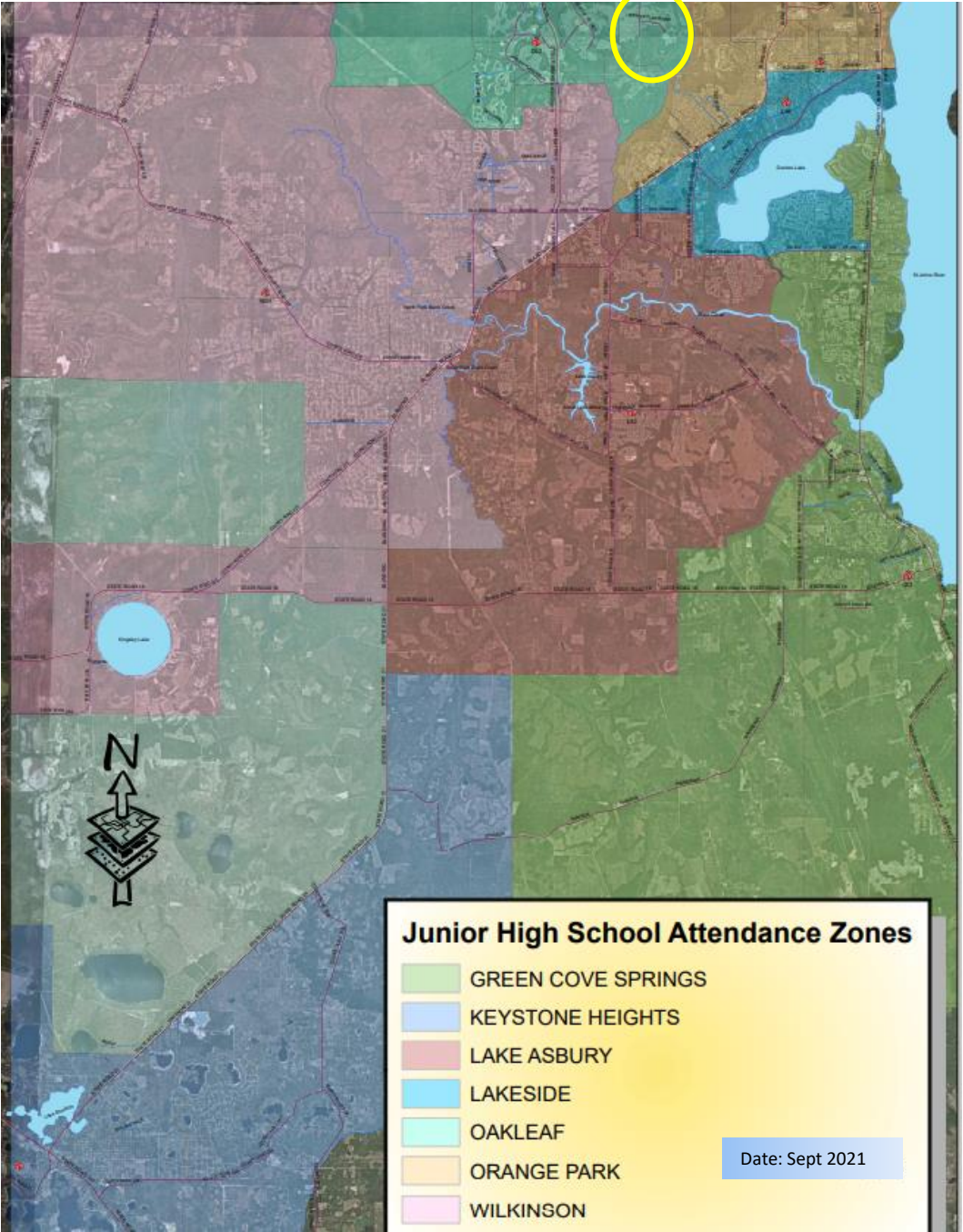
Next Slides look to move the same area from OLJ to OPJ

**note: Students currently transported to OHS (5.2 miles)
will also be transported to OPH (6.2 miles)*

Junior High School Attendance Boundaries (all schools current)

OLJ to OPJ Study

Junior High School	Percent Capacity
Green Cove Springs	88%
Keystone Sr/Jr	91%
Lake Asbury	84%
Lakeside	63%
Oakleaf	87%
Orange Park	66%
Wilkinson	98%



To OPJ

Attendance Boundary Change Study for Oakleaf JH and Orange Park JH

Area	Number of students
5	198

OLJ: 1474 cap / 1283

OPJ: 1062 cap / 706

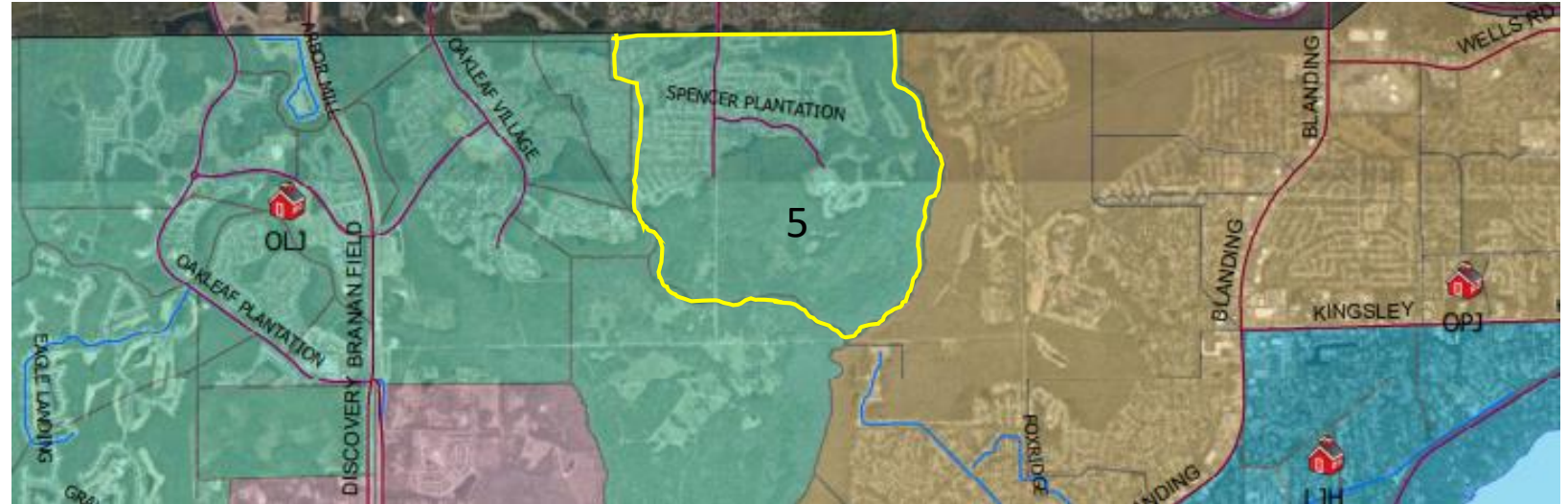
North Clay County Junior High School attendance areas

Current: OLJ 87% (Projected growth \approx 111)
OPJ 66% (360 \approx available capacity)

Remedy: Area 5 to OPJ \approx 198 students

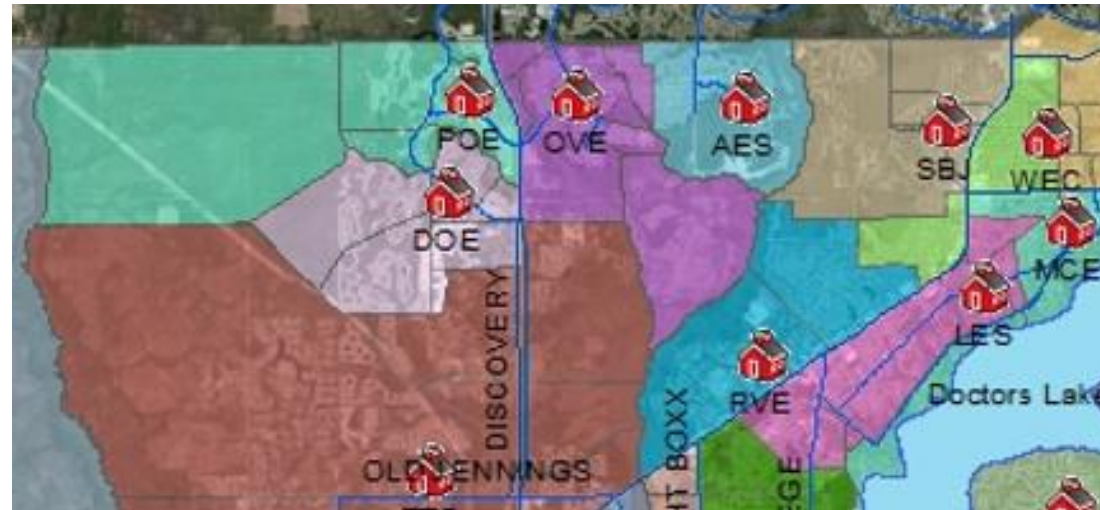
Status Quo: OLJ 92% (growing)
OPJ 68%

Result: OLJ 74% (*allows for growth*)
OPJ 85%



Nearby Neighborhoods to OPJ:

- Olde Sutton
- Spencer
- Holly Parke
- Cranes Landing
- Hammock Grove
- Brittany Bluff
- Water Mill
- Plantation Village



North Clay County Elementary School attendance areas

**note: Students currently transported to OLJ (5.2 miles)
will also be transported to OPJ (6.7 miles)*

Questions???

