



Superintendent's Update

January 6, 2022



Presentation Objectives

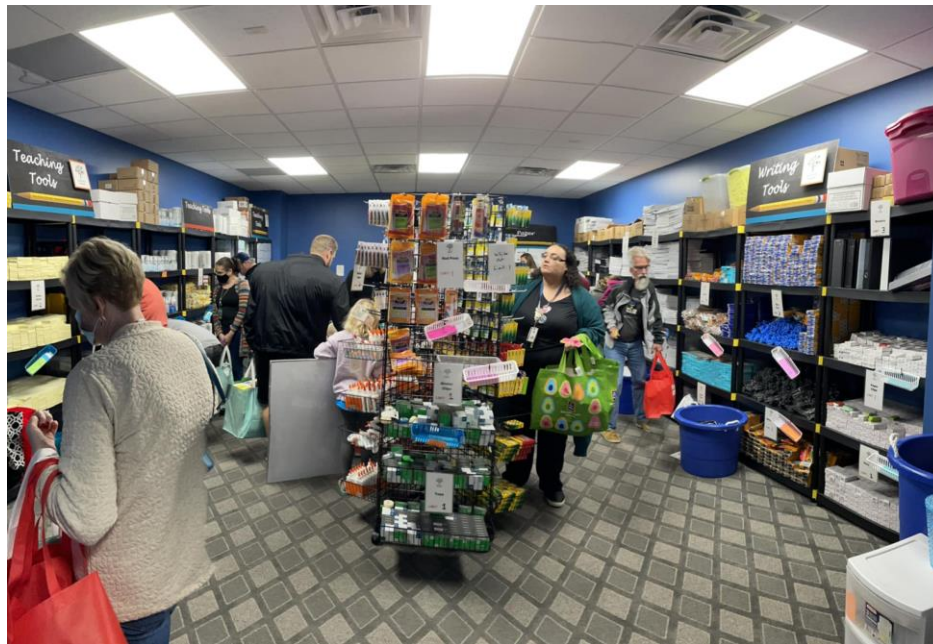
- ❖ **Back to School for the Second Semester**
- ❖ **School of the Month Nominations**
- ❖ **Controlled Open Enrollment for SY 22-23**
- ❖ **Graduation Rate for 2020 - 2021**
- ❖ **COVID-19 Protocols for 2021-2022**



Back to School for the Second Semester

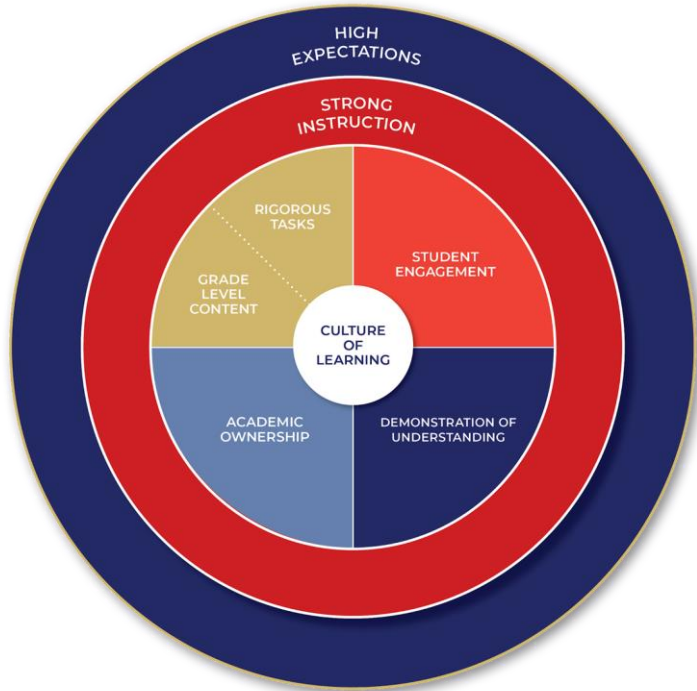


Welcome Back and Happy New Year!
Over 200 teachers attended the Tools 4 Clay Schools event
on the planning day, Monday, January 3rd.





Continued Focus on High Expectations for ALL learners during the second semester for quarters three and four.



Yearlong Focus

Acknowledging Students Positively for Exhibiting Appropriate Behaviors

Quarter 1

Communicating Clear Learning Targets & Success Criteria

Quarter 2

Checking for Understanding of Learning Targets

Quarters 3-4

Responding to Assessments aligned to Learning Targets



School of the Month Nominations



This is YOUR opportunity to share with our community all of the wonderful things happening in your school. Each month there will be a new theme. Just go to www.OneClay.net/schoolofthemonth and Click to Nominate your school.



Monthly Themes



Click to Nominate



School of the Month Flyer



School of the Month
Winners

January's theme is:

#FLCelebratesLiteracy by emphasizing Lifetime Literacy!

**Recognizing the imaginative ways schools foster
a lifelong love of literacy on campus and in the community!**

Nominations Accepted January 1st - January 22nd.



Controlled Open Enrollment for 2022-23



Controlled Open Enrollment (COE)

- Required per Florida Statute 1002.31
- School Districts Must Establish a Capacity Threshold and Allow Student Access
- Clay County COE Threshold 80% Capacity
- Designed to Give Parents Additional Educational Offerings
- Timeline for Controlled Open Enrollment
 - **Application Window is January 24th- February 25th**



COE Open Schools for 2022-2023

2022-2023 COE Schools	Available Seats
Charles E. Bennett Elementary	35
Montclair Elementary	79
S. Bryan Jennings Elementary	61
Total Seats Open	175



COE Lottery Process

Pursuant to open enrollment, if there are more applicants than seats available at a specific school, a lottery shall be conducted to determine which students are granted admission. Students in the following categories will receive priority consideration in a lottery selection process:

- Students residing in the District
- Active Military Families Who Military Orders Required Move
- Relocated Due to Foster Care
- Relocated Due to Court Order



Graduation Rate for 2020-2021



FLDOE Released Graduation Rates on Tuesday, Jan. 4th.

CCDS Highlights

- District graduation rate is **92.7%**
- The District rate outpaced the State by 2.7 percentage points!
- Subgroup graduation rates were as follows
 - Black or African American Subgroup - 94.1%
 - Hispanic Subgroup - 93.9%
 - Low Socioeconomic Subgroup - 89%
 - Students with Disabilities Subgroup - **85.2%**





Graduation Rate by High School

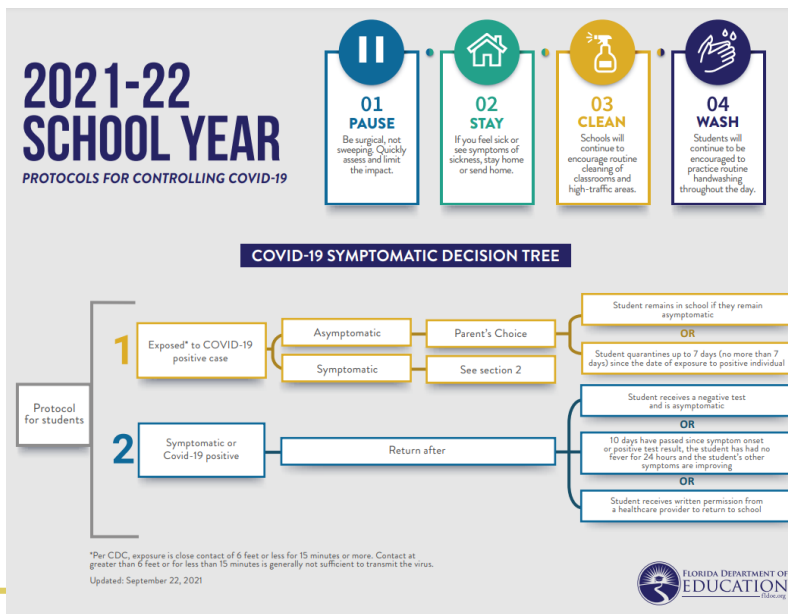
Clay High	94.9%
Fleming Island High	99.1%
Keystone Heights Jr/Sr High	86.7%
Middleburg High	92.3%
Oakleaf High	97.4%
Orange Park High	95.4%
Ridgeview High	97.8%



COVID-19 Protocols for Second Semester



Even with the updated CDC guidance for a five-day quarantine, due to Rule 64DER21-12 "Protocols for Controlling COVID-19 in School Settings," students will still follow the Florida Department of Education Decision Tree for when to return to campus. Until the State Surgeon General amends the rule, this is the chart that school districts and local health departments must follow for our students.





Mitigation Strategies for COVID-19 within CCDS

- Isolation rooms on all campuses for students and staff exhibiting symptoms or known exposures to COVID-19
- Seating charts in the classroom, cafeterias, and school buses.
- Electrostatic sprayers to clean and disinfect classrooms and common areas throughout the day
- Continued use of our COVID-19 report every Monday detailing the case and quarantine count from the previous week in Clay schools
- Recommended use of face coverings when indoors



FREE COVID-19 Testing for Students and Staff
through our partnership with Emergency Management and DOH-
Clay at two locations in the county.

Clay County Fairgrounds

2497 FL-16, Green Cove Springs, FL 32043
Beginning December 29:
Monday - Saturday, 8 a.m. – 6 p.m.

No out-of-pocket cost!

Sign up here for testing: <https://mdc.nomihealth.com/signup/fl>

Sign up here for vaccinations: <https://public.domo.com/cards/PNJP2>

Oakleaf Sports Association

3979 Plantation Oaks Blvd, Orange Park, FL 32065
Beginning December 29:
Sunday - Friday, 8 a.m. – 6 p.m.

No out-of-pocket cost!

Sign up here for testing: <https://mdc.nomihealth.com/signup/fl>

Sign up here for vaccinations: <https://public.domo.com/cards/PNJP2>



COVID-19 Safety Reminders for students and staff. Please DO NOT come to school or work if you fall into one of the following scenarios:

- You are awaiting COVID-19 test results (regardless if asymptomatic)
- You are a confirmed positive with COVID-19 and still within the recommended self-isolation timeframe (regardless of vaccination status)
- Someone in the home is exhibiting COVID-19 symptoms and is awaiting test results (*Unless fully vaccinated and/or showing no symptoms)
- Someone in the home is positive with COVID-19 (*Unless fully vaccinated and/or showing no symptoms - highly encourage use of face covering)



Thank you!