



KATHLEEN SCHOFIELD  
SUPERVISOR,  
STEM & MILITARY FAMILY SUPPORT

OCTOBER 20, 2016

# Why STEM? Why Now?

## College and Career Ready Students

Aligns with Academy Programs

Critical Thinking Skills

Multi-Disciplinary Project

Social Skills Needed for Collaboration

Stakeholders Demand It

Technology affects **every** field:



# FUNDING

Funding Source	Amount
DoDEA Project PASS	2,395,000
DoDEA Project ASSET	675,000
DoDEA Project VOYAGES	2,500,000
DoDEA Project IDEAL	400,000
DoDEA Project SALUTE	1,250,000
MSP	500,000
21 <sup>st</sup> CCLC Grant	2,500,000
NMSI College Readiness	4,000,000

# ROBOTICS

**Leslee Bryan:**  
**Curriculum Specialist – Science & Robotics**



**FLL**

**FTC**

**FRC**

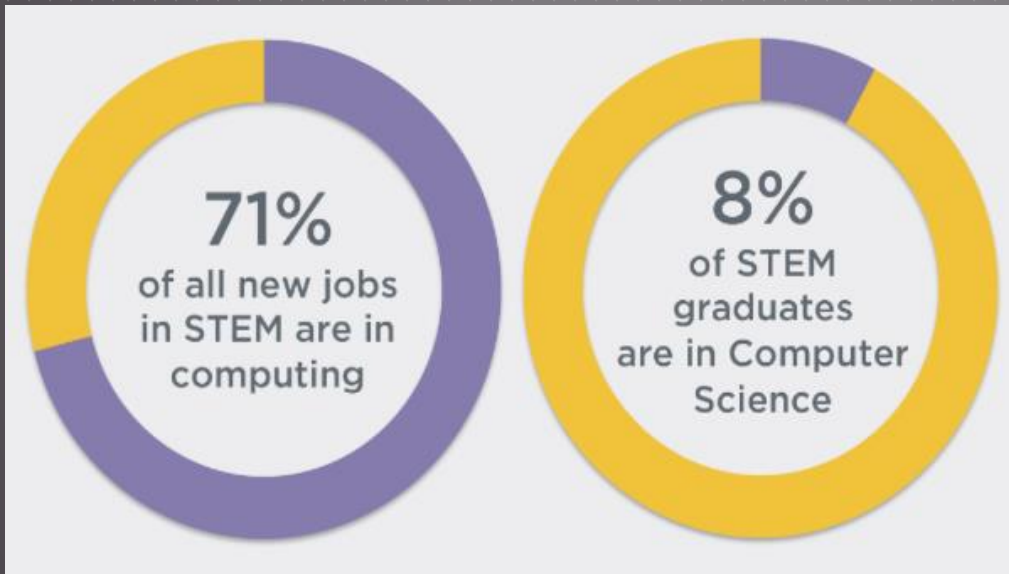


**97.5%**



# CODING

**Elizabeth Scheilz:**  
**Curriculum Specialist – Math & CS**

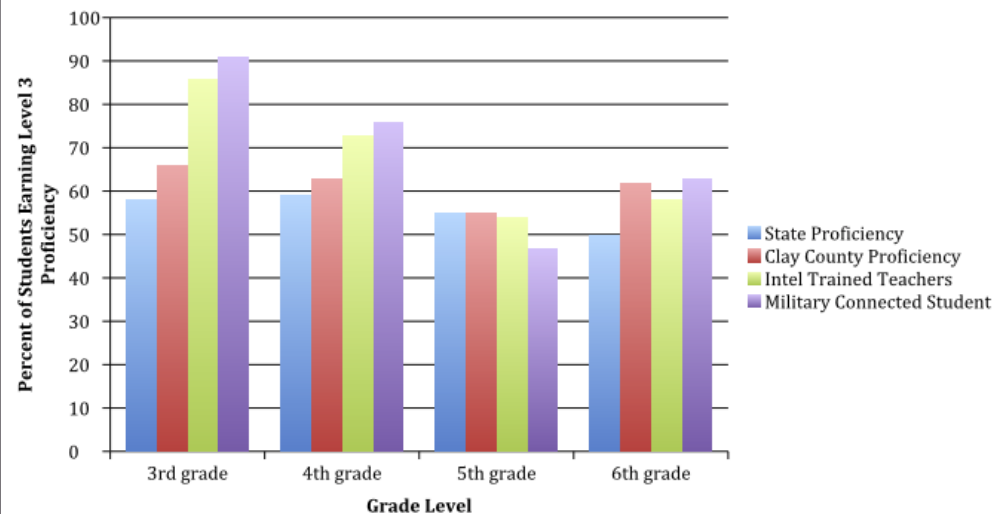


# MATHEMATICS



Teacher	COHORT 1			COHORT 2		
	Pretest	Posttest	Growth	Pretest	Posttest	Growth
1.	35.00%	60.00%	25.00%	82.50%	92.50%	10.00%
2.	50.00%	77.50%	27.50%	37.50%	62.50%	25.00%
3.	50.00%	65.00%	15.00%	95.00%	97.50%	2.50%
4.	80.00%	95.00%	15.00%	62.50%	90.00%	27.50%
5.	92.50%	92.50%	0.00%	27.50%	52.50%	25.00%
6.	60.00%	87.50%	27.50%	60.00%	100.00%	40.00%
7.	90.00%	85.00%	-5.00%	95.00%	97.50%	2.50%
8.	100.00%	100.00%	0.00%	70.00%	87.50%	17.50%
9.	52.50%	72.50%	20.00%	95.00%	100.00%	5.00%
10.	82.50%	92.50%	10.00%	35.00%	77.50%	42.50%
11.	57.50%	72.50%	15.00%	60.00%	75.00%	15.00%
12.	85.00%	87.50%	2.50%	40.00%	87.50%	47.50%
13.	75.00%	90.00%	15.00%	20.00%	40.00%	20.00%
14.	7.50%	20.00%	12.50%	60.00%	60.00%	0.00%
15.	27.50%	85.00%	57.50%	25.00%	65.00%	40.00%
16.	40.00%	72.50%	32.50%	77.50%	80.00%	2.50%
17.	17.50%	15.00%	-2.50%	52.50%	77.50%	25.00%
18.	67.50%	72.50%	5.00%	52.50%	82.50%	30.00%
19.	30.00%	35.00%	5.00%			
20.	92.50%	100.00%	7.50%			
21.	70.00%	67.50%	-2.50%			
22.	52.50%	95.00%	42.50%			
23.	92.50%	95.00%	2.50%			
24.	62.50%	85.00%	22.50%			
25.	92.50%	95.00%	2.50%			
26.	72.50%	97.50%	25.00%			
27.	55.00%	90.00%	35.00%			

Student Data from Intel Trained Teachers



# AFTER SCHOOL

**Karen Olley**  
**Program Specialist – 21<sup>st</sup> CCLC Program**





[illegible]



# SEL & MILITARY FAMILY SUPPORT

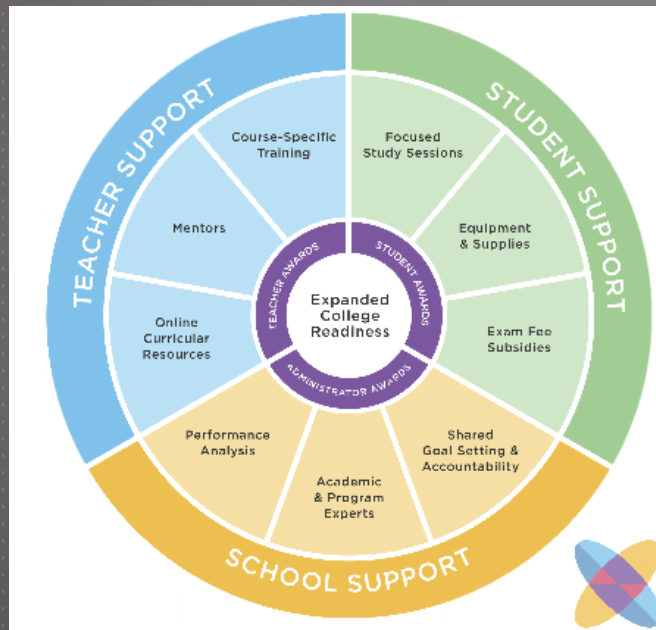
**Tina Baker, Project Specialist**  
**Trish Hunter, LMHC**

Military Family Life Councilors



# COLLEGE READINESS

## ► Partnership with National Math & Science Initiative



### A CELEBRATION OF ACADEMIC EXCELLENCE

The National Math and Science Initiative  
and  
The School District of Clay County

Invite you to join us as a special guest for the kickoff of  
NMSI's College Readiness Program at

Oakleaf High School

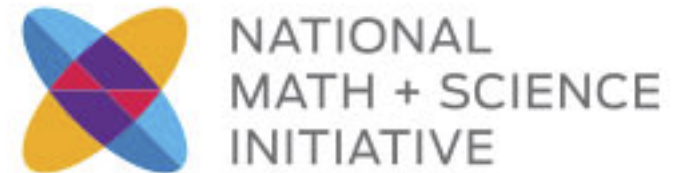
Thursday, October 20<sup>th</sup> 2016  
10:30 am

Oakleaf High School Gymnasium

Please RSVP to Kathleen Schofield by Friday, October 14<sup>th</sup>  
[Kathleen.Schofield@myoneday.net](mailto:Kathleen.Schofield@myoneday.net) or 904-502-0958

The seven Clay County high schools ~ Clay, Fleming Island, Keystone, Middleburg, Oakleaf, Orange Park, and Ridgeview ~ were selected to take part in the National Math and Science Initiative (NMSI) College Readiness Program. The program is funded by the Department of Defense due to the high enrollment of military-connected students whom our district proudly serves. NMSI will fund almost \$4 million over the next three years.

NMSI is a nonprofit organization dedicated to transforming math and science education in today's classrooms with high quality, proven effective programs. NMSI's College Readiness Program increases the number of students succeeding in rigorous coursework in math, science, and English, and expands access to traditionally underrepresented students. The program boosts Advanced Placement performance by 30 times the national average and builds teacher capacity to advance student achievement at all levels. Learn more at [www.nmsi.org](http://www.nmsi.org)



# COLLABORATION

- ▶ National Math & Science Initiative
- ▶ Department of Defense Education Activity
- ▶ Education Foundation
- ▶ State of Florida (21<sup>st</sup> Century Grant/MSP)
- ▶ Bethesda Farm
- ▶ STEM2 Hub
- ▶ STEM Funders Network





# WHAT NEXT?

**Check out our new location  
Orange Park HS Bldg. 16**

Military Family Support Center

Model Exploratory STEM Center

FRC Robotics Team (at OPHS)

ESSA – Implications for STEM

Continue Grant Seeking

