

Boundary Realignment

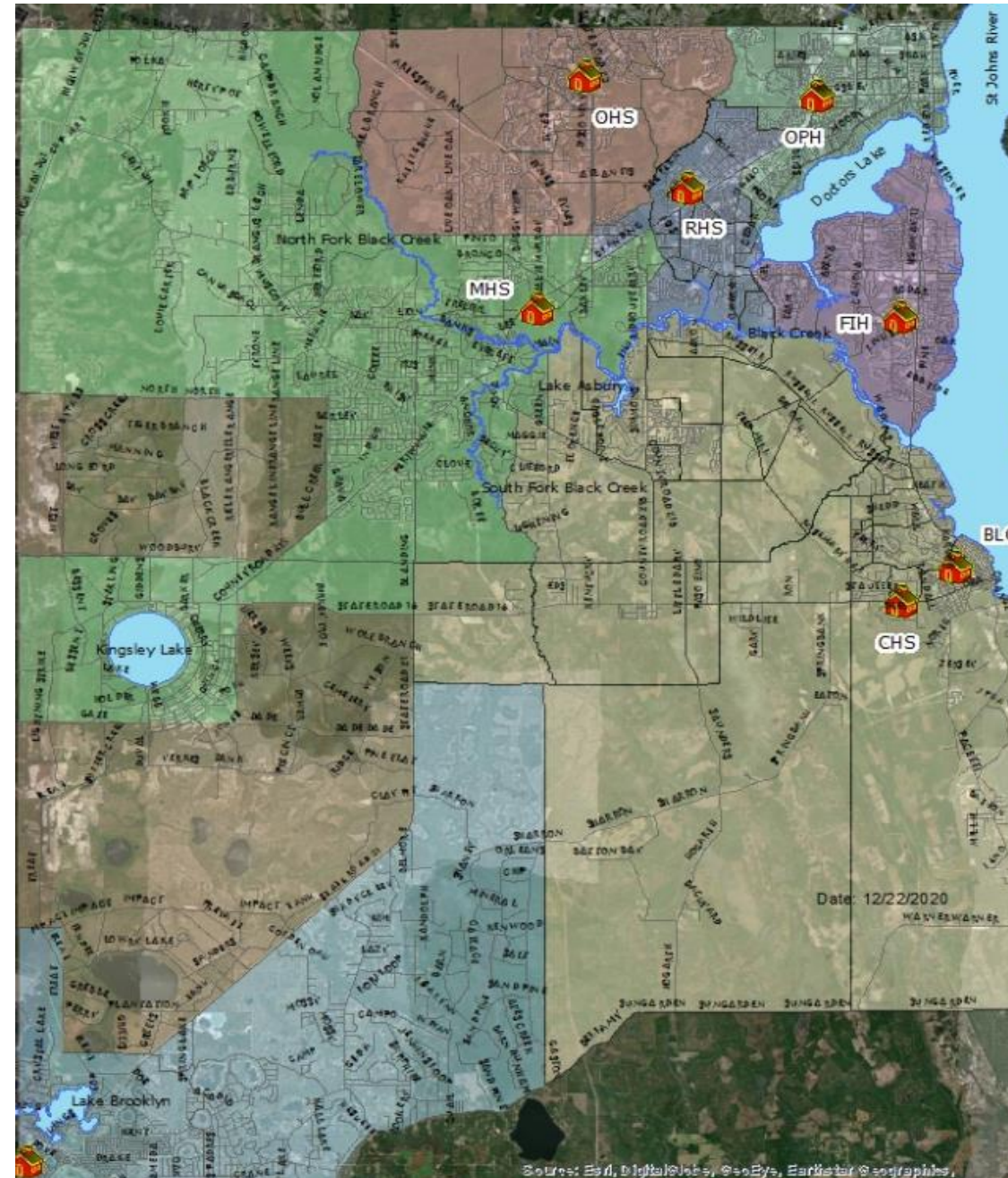
Needs Assessment

Assessment Focus

- High School: OHS
- Junior High: LAJ
- Elementary Schools: TES, PES and LAE
- Elementary “R”

Senior High School Attendance Boundaries (current)

High School	Percent Capacity
Clay High	79%
Fleming Island HS	85%
Keystone Sr/Jr	82%
Oakleaf HS	106%
Orange Park HS	65%
Ridgeview HS	67%
Middleburg HS	98%



Source: Esri, DigitalGlobe, GeoEye, Earthstar Geographics

Attendance Boundary and planned growth Oakleaf High School

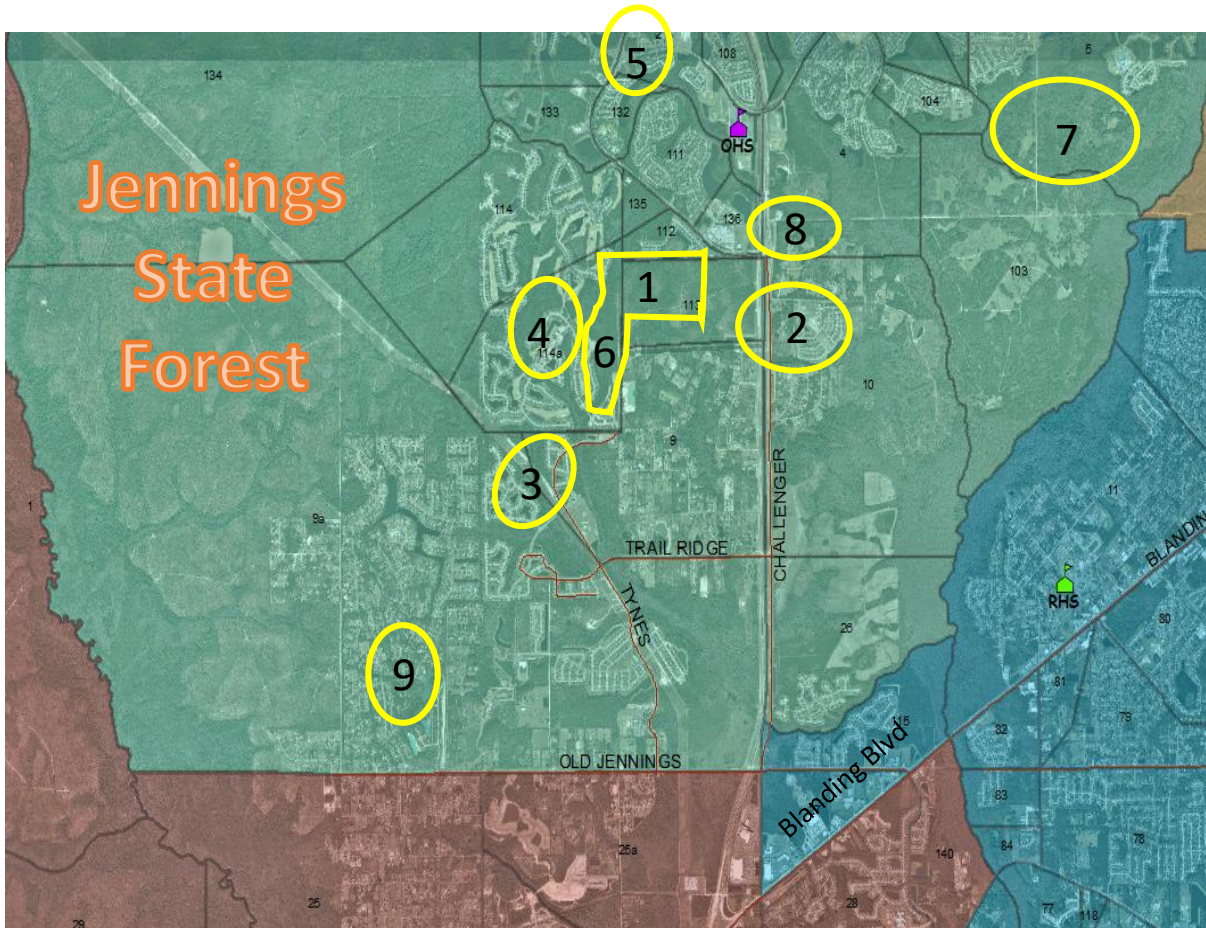
OHS: 2459 cap

Attend: 2607

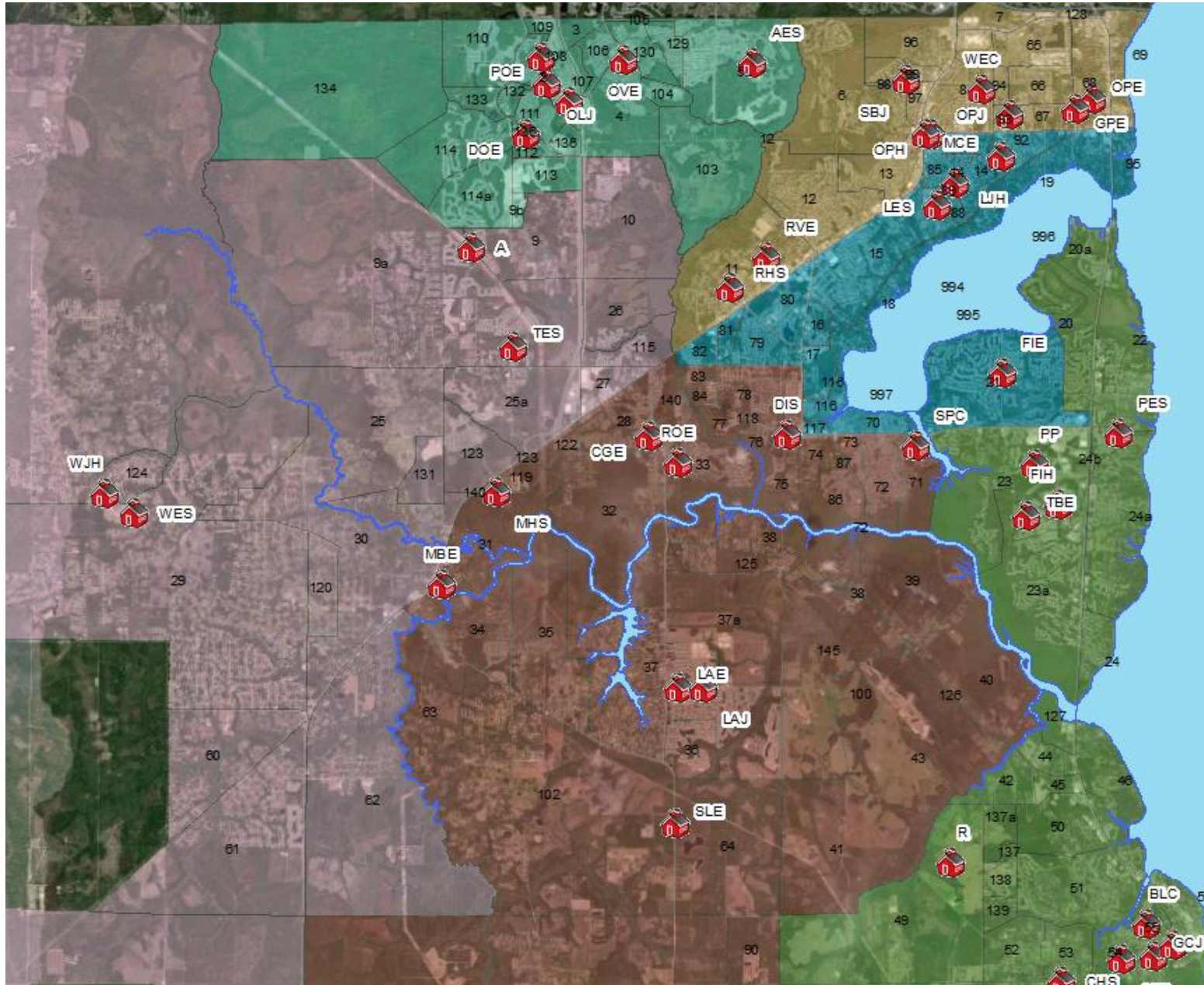
Current: OHS 106 % (Projected growth \approx 230)
Status Quo: OHS 115 % (growing)

Growth (OHS)

- 1) Grey Hawk
- 2) Kindlewood
- 3) Pine Ridge
- 4) Eagle Landing
- 5) Arbor Mill
- 6) Oakland Hills
- 7) Wilford Preserve and Cheswick Oaks
- 8) Cameron Oaks
- 9) Fox Meadow unit 8A



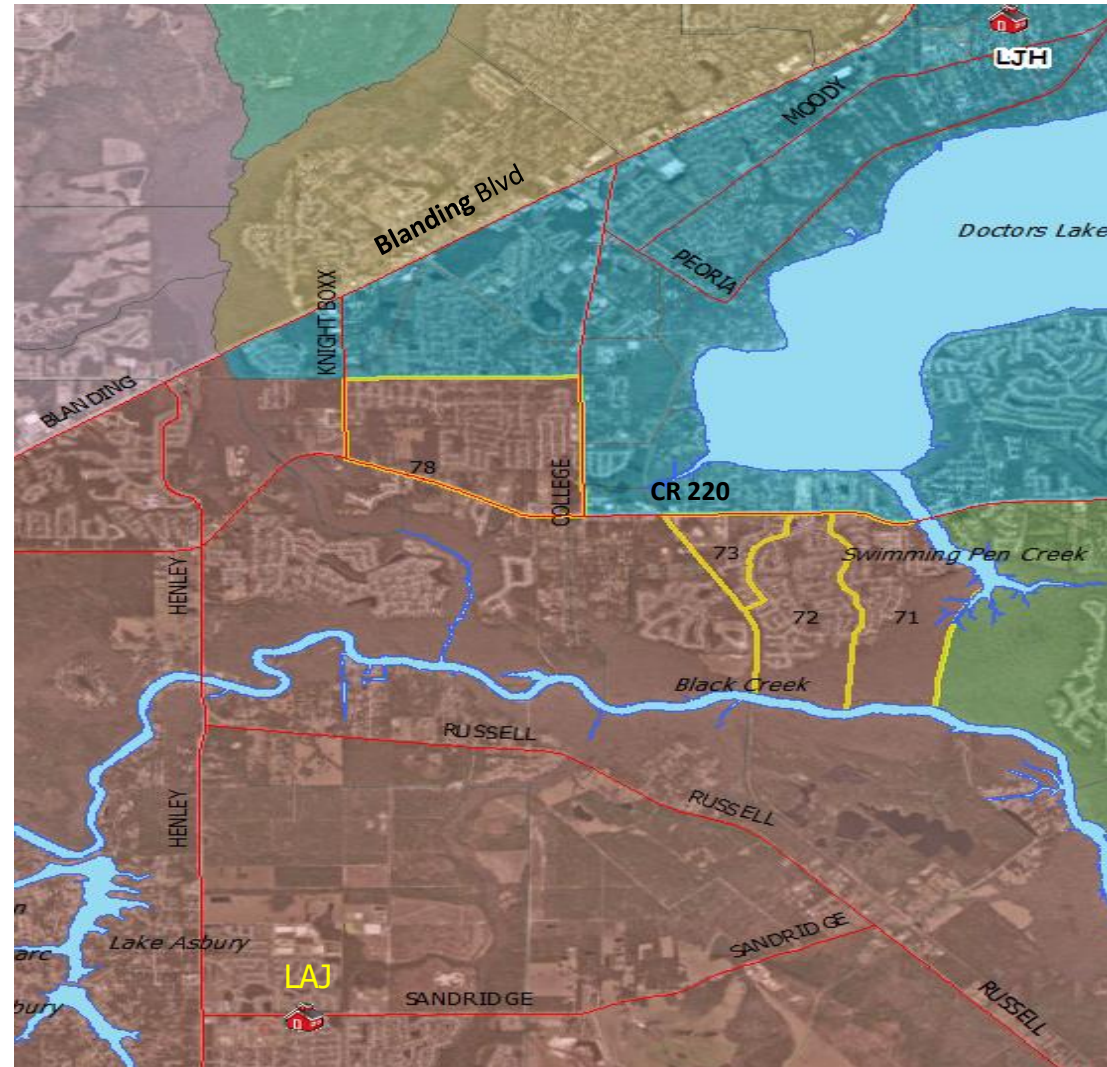
Junior High School Attendance Boundaries (current)



School	Percent Capacity
Green Cove Spgs JH	90%
Lake Asbury JH	83% (ESE factor 88%)
Lakeside JH	70%
Oakleaf JH	80%
Orange Park JH	70%
Wilkinson JH	97%

Attendance Boundary LAJ

Current Boundary Area



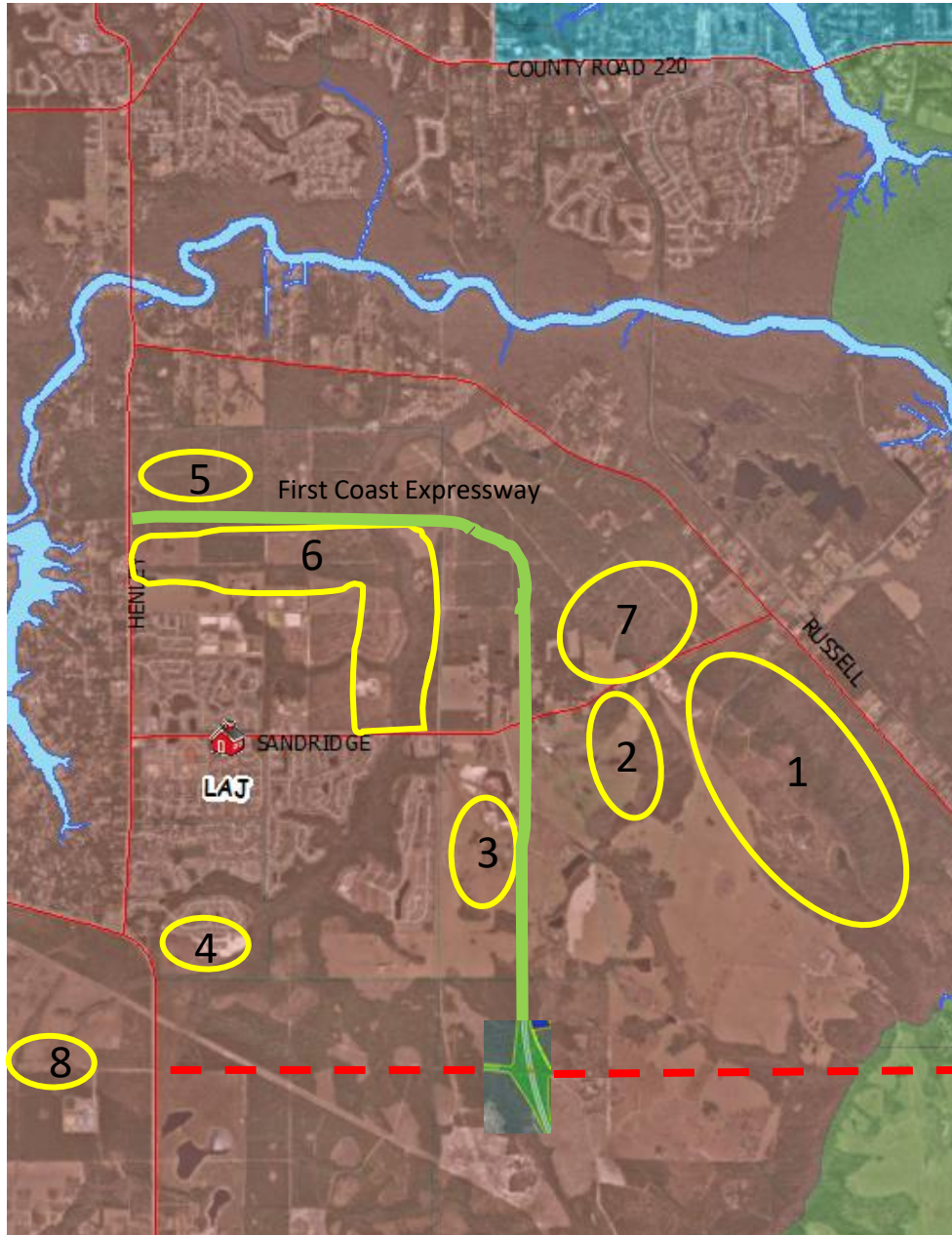
Attendance Boundary for Lake Asbury JH

LAJ: 1334 cap

Attend: 1107

Current: LAJ 83% (Projected growth \approx 360) ESE factor: LAJ 88%

Status Quo: LAJ 113% (Growing) ESE factor: LAJ 117%

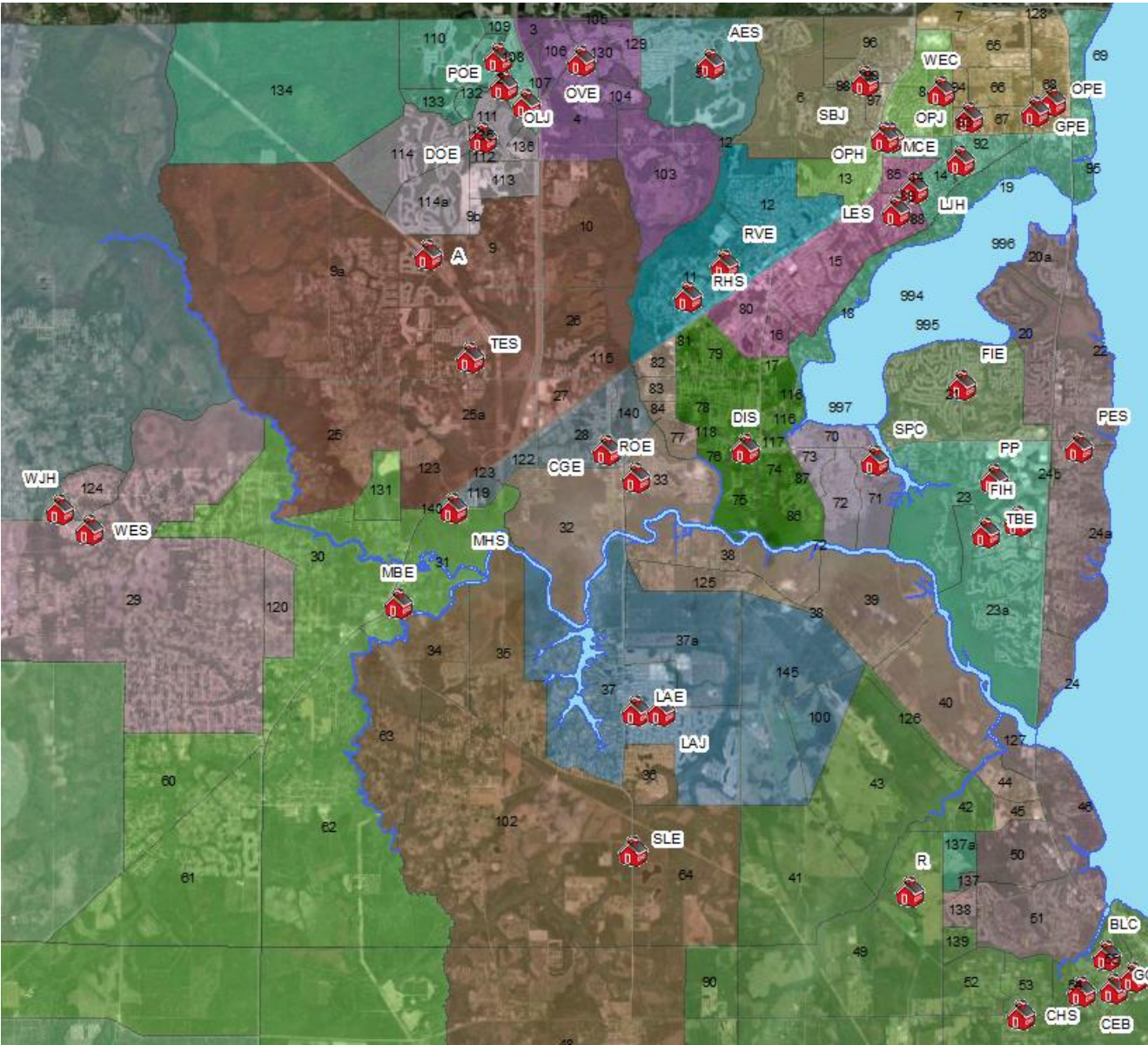


Growth (LAJ)

- 1) Cross Creek
- 2) Avonlea Hills
- 3) Rolling Hills
- 4) Royal Pointe
- 5) Village Park
- 6) Creek View Trail
- 7) Annabel Island Phase 1
- 8) Reinhold North

Elementary School Attendance Boundaries (current)

School	Percent Capacity
Paterson ES	104%
Tynes ES	104%
Coppergate ES	74%
Keystone Hghts ES	110%
Fleming Island ES	81%
C.E. Bennett ES	80%
Lake Asbury ES	91%
Thunderbolt ES	79%
Rideout ES	76%
Discovery Oaks ES	100%



Attendance Boundary and Growth

Paterson and Fleming Island ES

PES: 1105 cap Attend: 1146

Current: PES 104% (Projected growth \approx 200)

Status Quo: PES 121%

Growth (PES)

Black Creek Village - 17

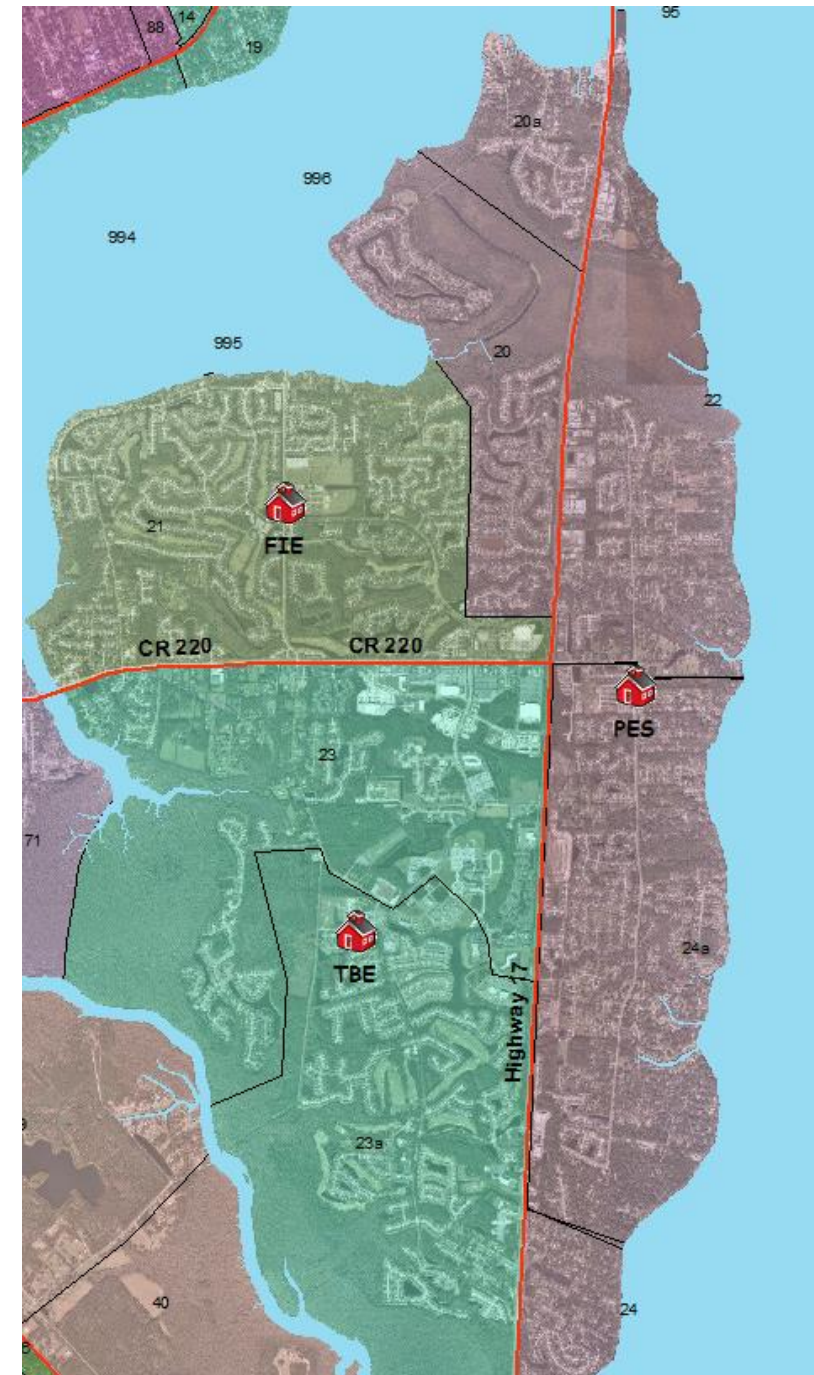
Fleming Estates - 10

Magnolia West ph III and IV - 60

The Reserve - 37

Willow Springs - 85

Luten Landing - 7



Attendance Boundary and Growth Paterson Elementary School

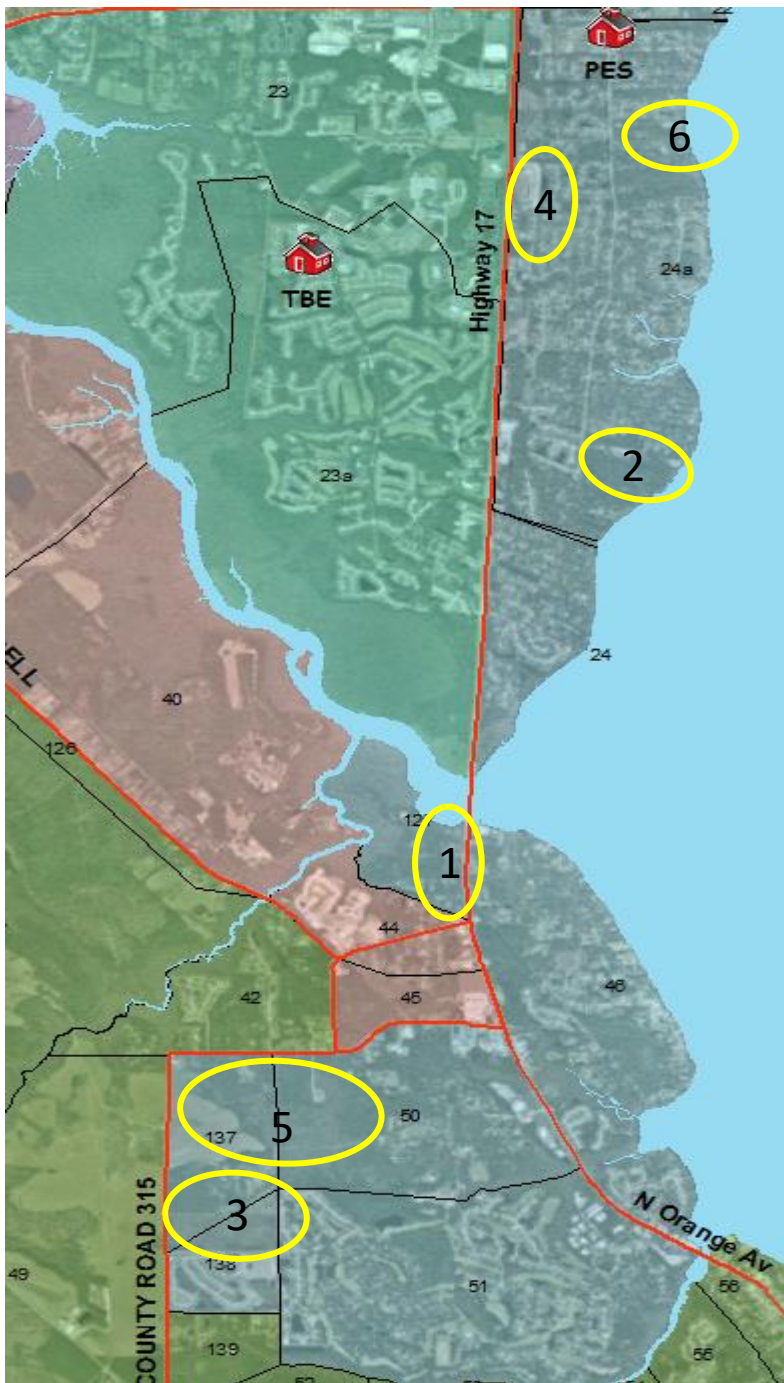
PES: 1105 cap

Current: PES 104% (Projected growth \approx 200)

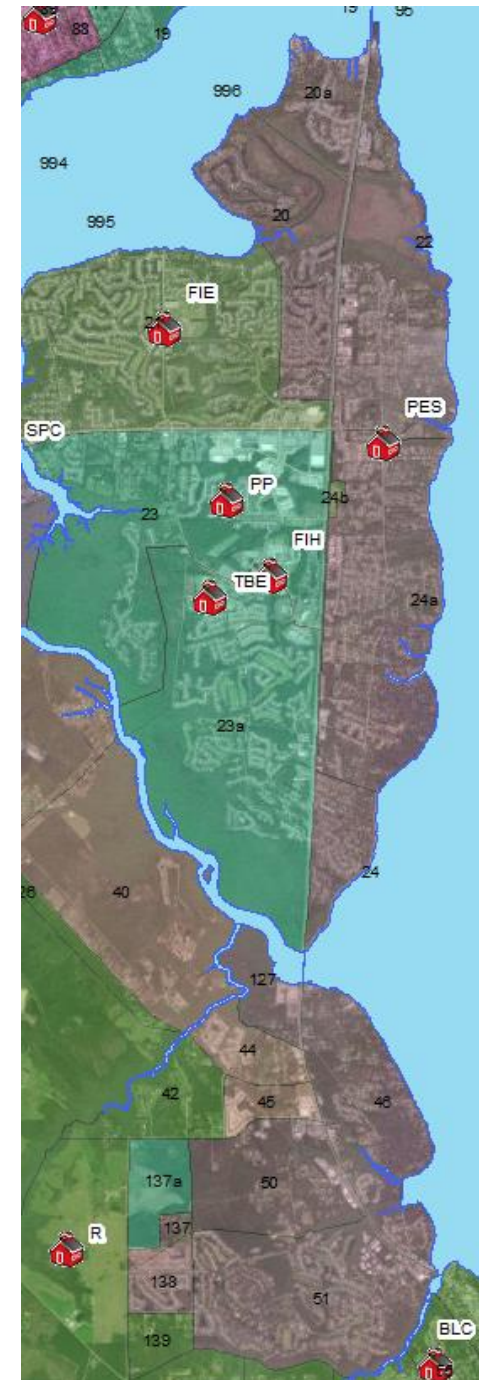
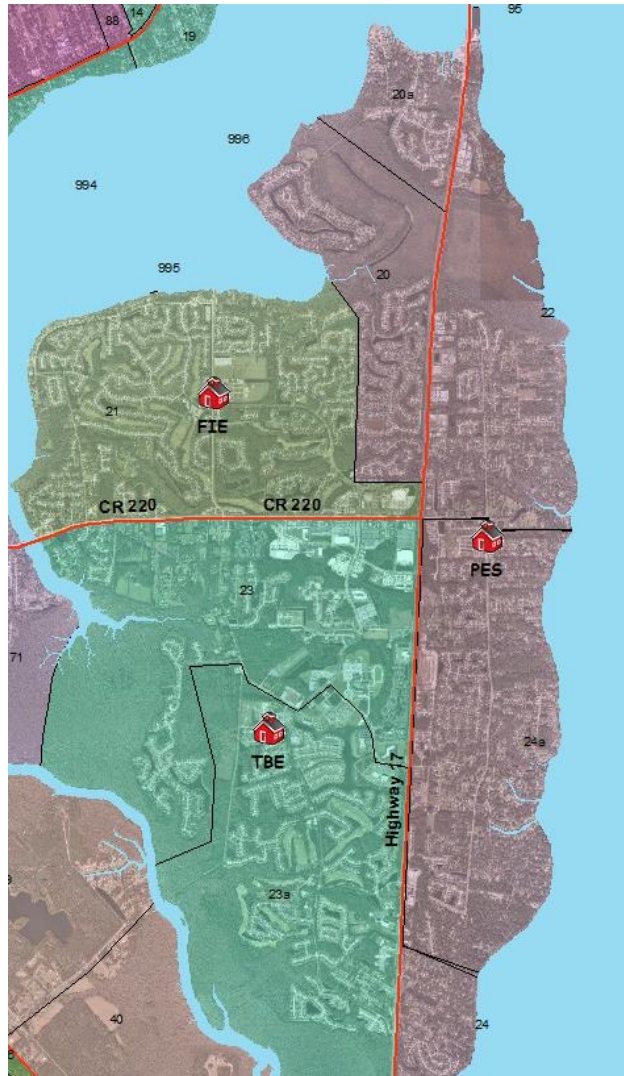
Status Quo: PES 121%

Growth (PES)

- 1) Black Creek Village - 17
- 2) Fleming Estates - 10
- 3) Magnolia West ph III and IV - 60
- 4) The Reserve - 37
- 5) Willow Spgs – 85
- 6) Luten Landing - 7

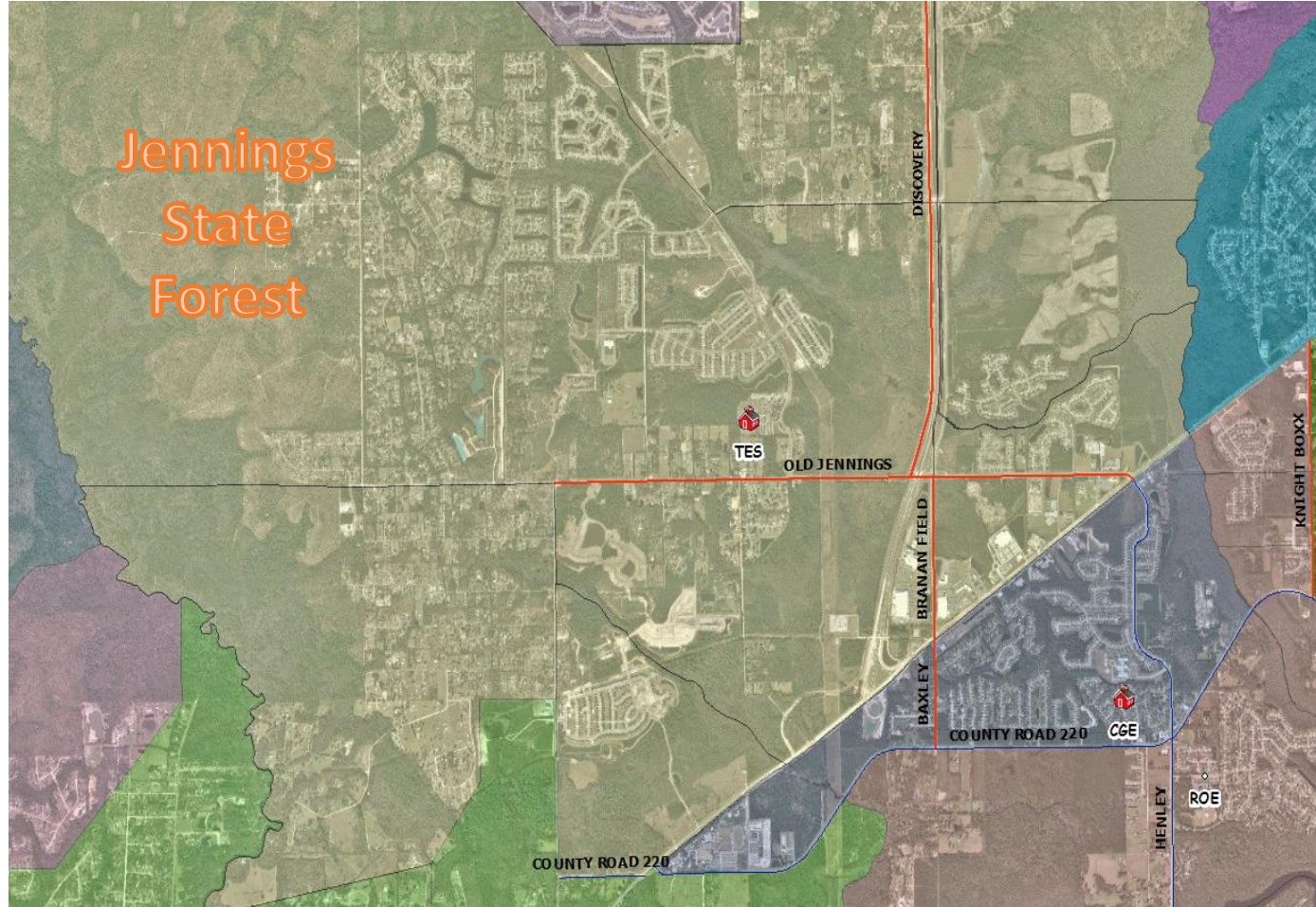


Attendance Boundary for Paterson ES



Attendance Boundary Tynes ES

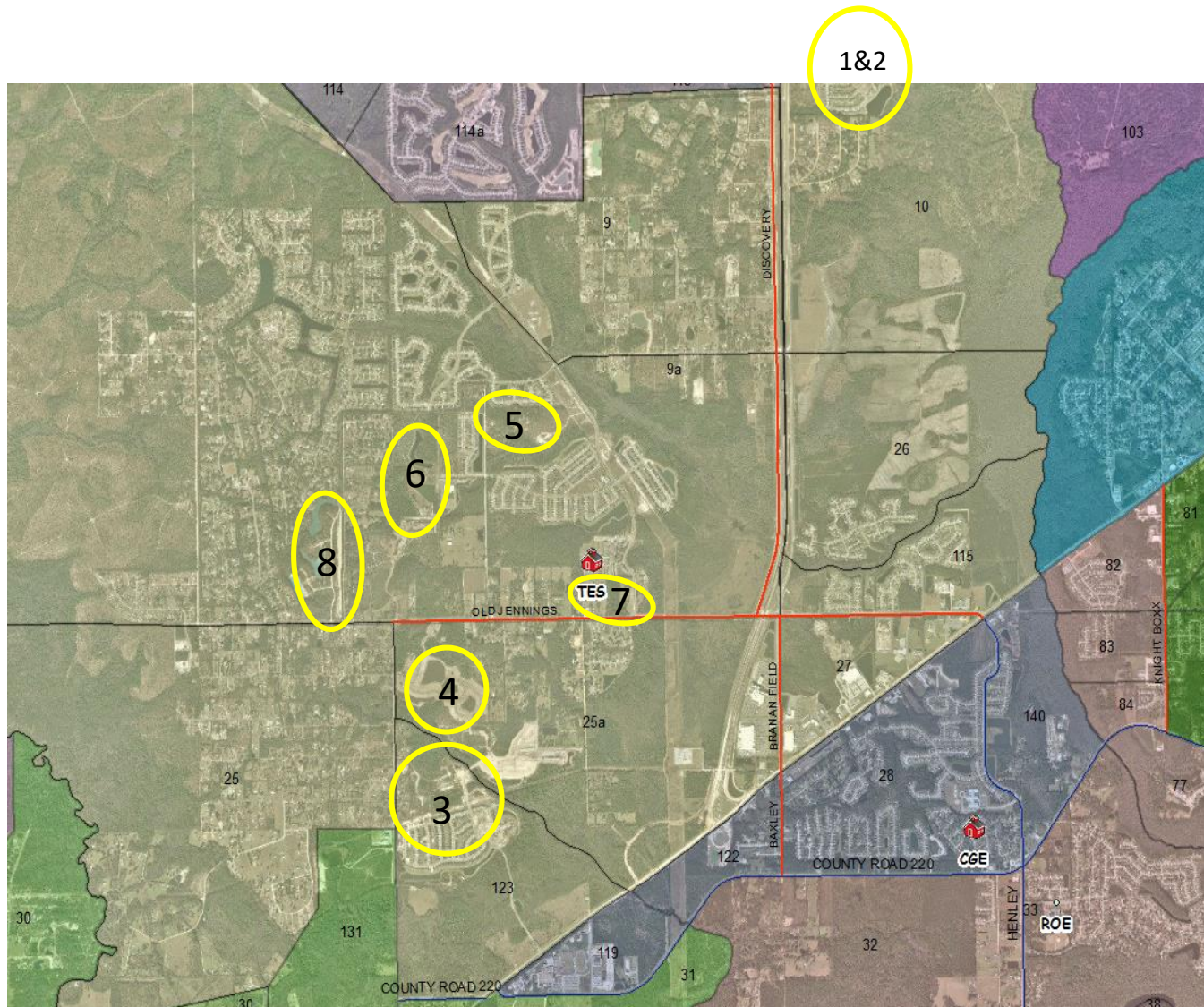
TES: 1004 capacity, 104%



Attendance Boundary Tynes and Coppergate Elementary Schools

TES: 1004 cap

CGE: 725 cap



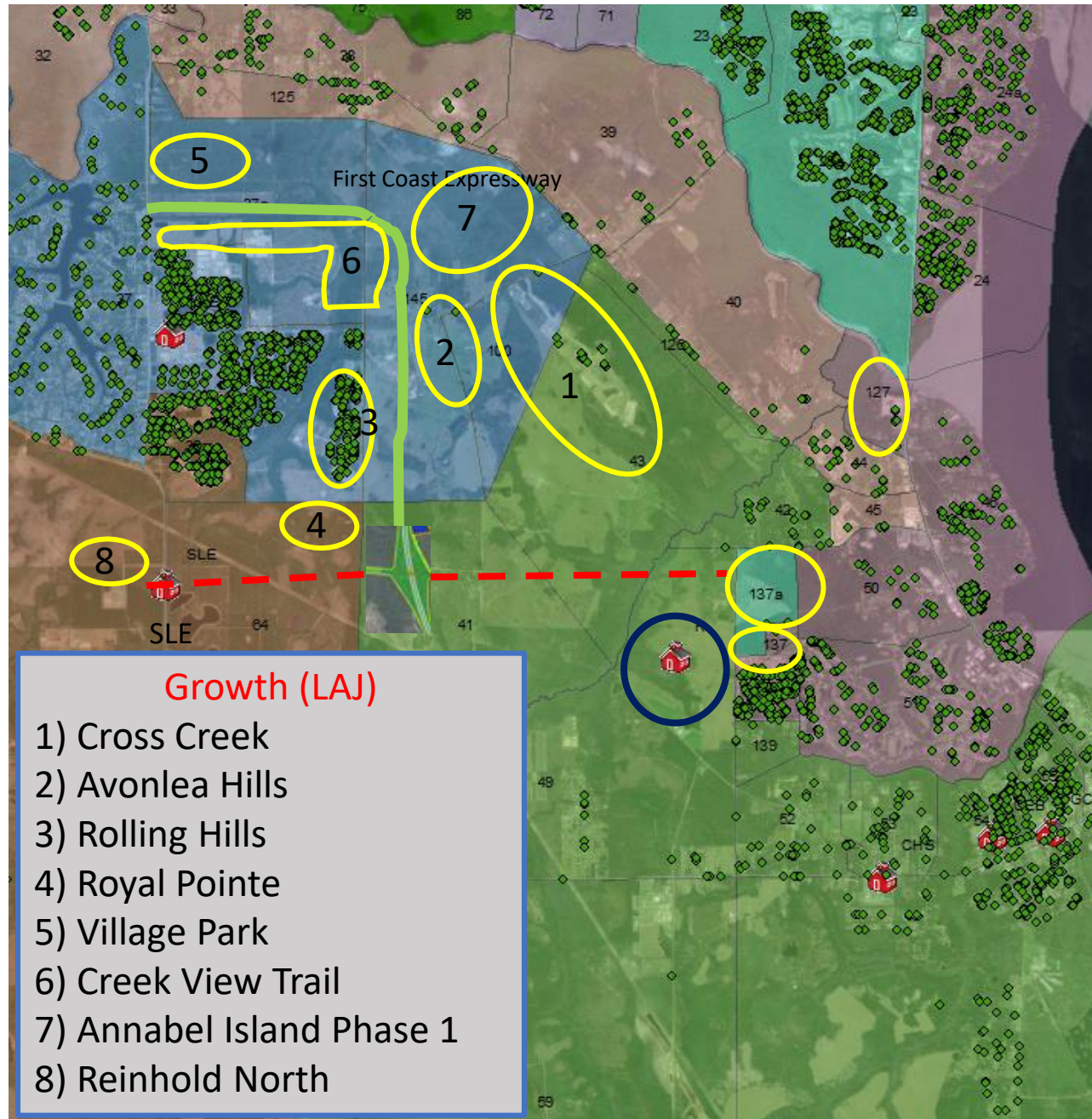
Current: TES 104% (Projected growth \approx 158)

Status Quo: TES 118% (growing)

Growth (TES)

- 1) Cameron Oaks
- 2) Kindlewood
- 3) Azalea Ridge
- 4) Linda Lakes
- 5) Pine Ridge
- 6) Pine Ridge West
- 7) Apartments (unnamed)
- 8) Fox meadow unit 8A

School "R" PK - 6, capacity 862



School	Capacity	Attendance	% Capacity
School "R"	862	N/A	N/A
PES	1105	1146	103.7%
ROE	679	518	76%
LAE	970	881	90.8%

Area Growth

- Magnolia West (PES)
- *Willow Springs (PES)
- Edgewater Landing (ROE)
- *Cross Creek (LAE)
- *Avonlea Hills (LAE)
- *Annabelle Island Phase I and II (LAE)
- *Creekview Trail (LAE)
- Traceland (ROE)
- *Village Park (LAE)
- Rolling Hills (LAE)

* 2,785 new homes...585 elementary students projected

The Way Forward

- Board Workshop (public meeting)
 - Present, examine and develop options to remedy current problem boundary alignments.
 - High School
 - Junior High
 - Elementary
- Develop community communication plan



Questions???