



# Superintendent Update

**March 1, 2018**

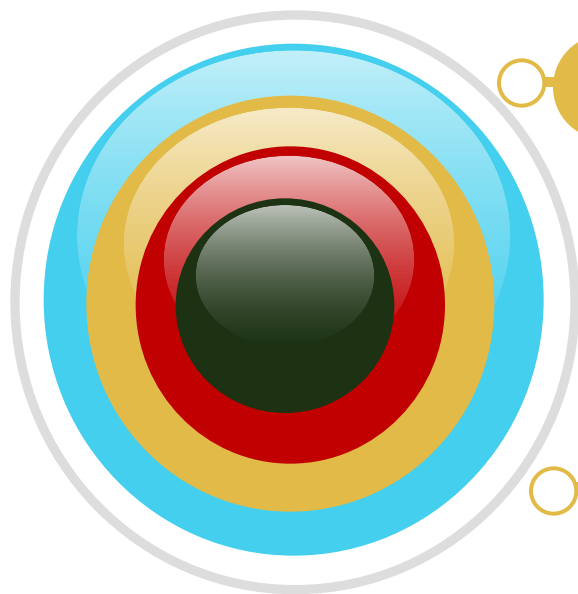


**Clay County District Schools**  
*Discovering Endless Possibilities*





# Overview



**School Safety in Clay County**

1

**Governor Scott's Proposed Plan for Safety**

2

**Insight Survey Results**

3

**Mid-Year Achieve 3000 & i-Ready Data**

4







# School Safety and Security





## **Safety & Security Measures in Clay County District Schools**

- Increasing Visibility & Accessibility of Law Enforcement
- All Schools have standard Operating Procedures to Address any Conceivable Event
- All Schools have Color-Coded Emergency Flip Cards
- All Schools are required to complete Fire, Lockdown, & Weather Drills
- All Schools utilize a Visitor Management System (Raptor)
- All Schools are Leveraging Behavior & Mental Health Supports
- All Schools have been Directed to Lock All Doors & Gates
- District uses Various Security Monitoring & Camera Surveillance
- District is Actively Assessing All Campus Needs
  - **Reducing Entry Points, Adding Fencing, Hardening Structures**
- District is Working to Engage all Community for Transparency



## **Governor Scott's Legislative Proposal to Safety & Security**

### **➤ Proposal Adds \$400-500 Million to Education**

- Adds Office of School Safety at DOE
- Adds Resource Officers to All Schools
- Offers Florida Sheriff's Marshall Program
  - Administration & Operations Team
- Expands District SEDNET Services
- Increases Funding for Mental Health Training, Counselors, and screening for Districts
- Require Hostage and Active Shooter Drills
- Adds Funding for Hardening School Structures





# 2017-2018 Results





***Insight*** is a tool to collect and aggregate teacher feedback to help principals set priorities around instructional culture.



### 1. SURVEY TEACHERS

*Validated survey gathers teacher feedback on critical aspects of school culture*



### 2. SHARE FEEDBACK

*TNTP identifies strong local performers, assesses school culture and shares this upward feedback with leaders*



School Reports and  
Data Debriefs

### 3. IMPROVE SCHOOL CULTURE

*Survey results provide information to prioritize and plan necessary actions to improve culture*





**TNTP's Instructional Culture Index is a validated, summative measure of a school's instructional culture which can be used to compare schools. Topics, and items within those topics, identify levers for future improvement.**

### INSIGHT SURVEY

*In a short survey, teachers answer questions on many aspects of their school's leadership and instructional environment.*

Topic	Survey Questions
Learning Environment	• • • • •
Professional Development	• • • • •
Student Growth Measures	• • • • •
Instructional Planning	• • • • •
Evaluation	• • • • • • •
Workload	• • • • •
Career Progression	• • • • •
Peer Culture	• • • • •
Retention	• • • • •
Hiring Process	• • • • •
Observation/Feedback	• • • • • • •

### INSIGHT INDEX

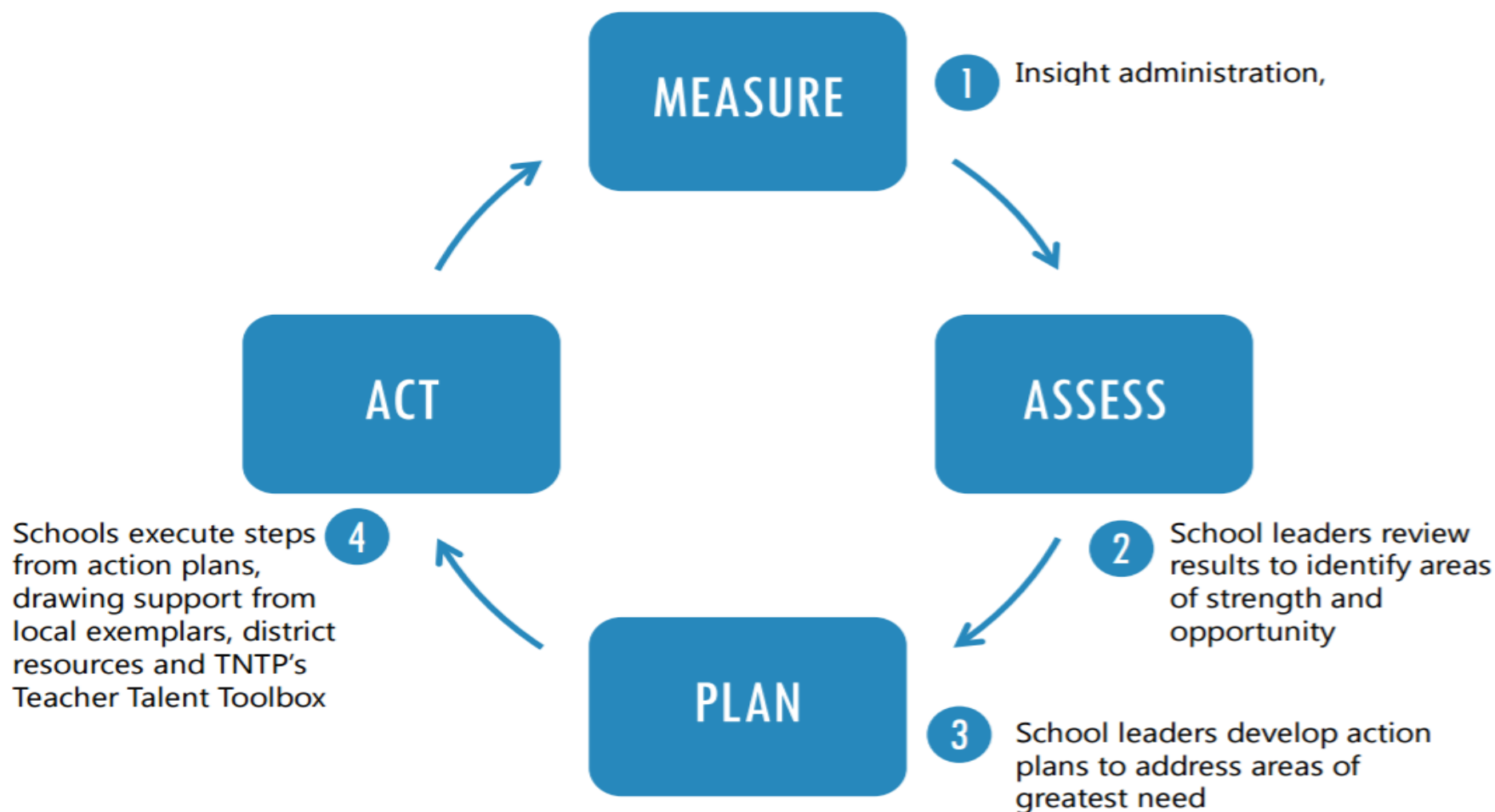
*Answers to three questions generate the Index, which captures a school's instructional culture in a single number from 1 to 10.*

- My **school is committed** to improving my instructional practice.
- The **expectations** for effective teaching are clearly defined at my school.
- Teachers at my school share a **common vision** of what effective teaching looks like.



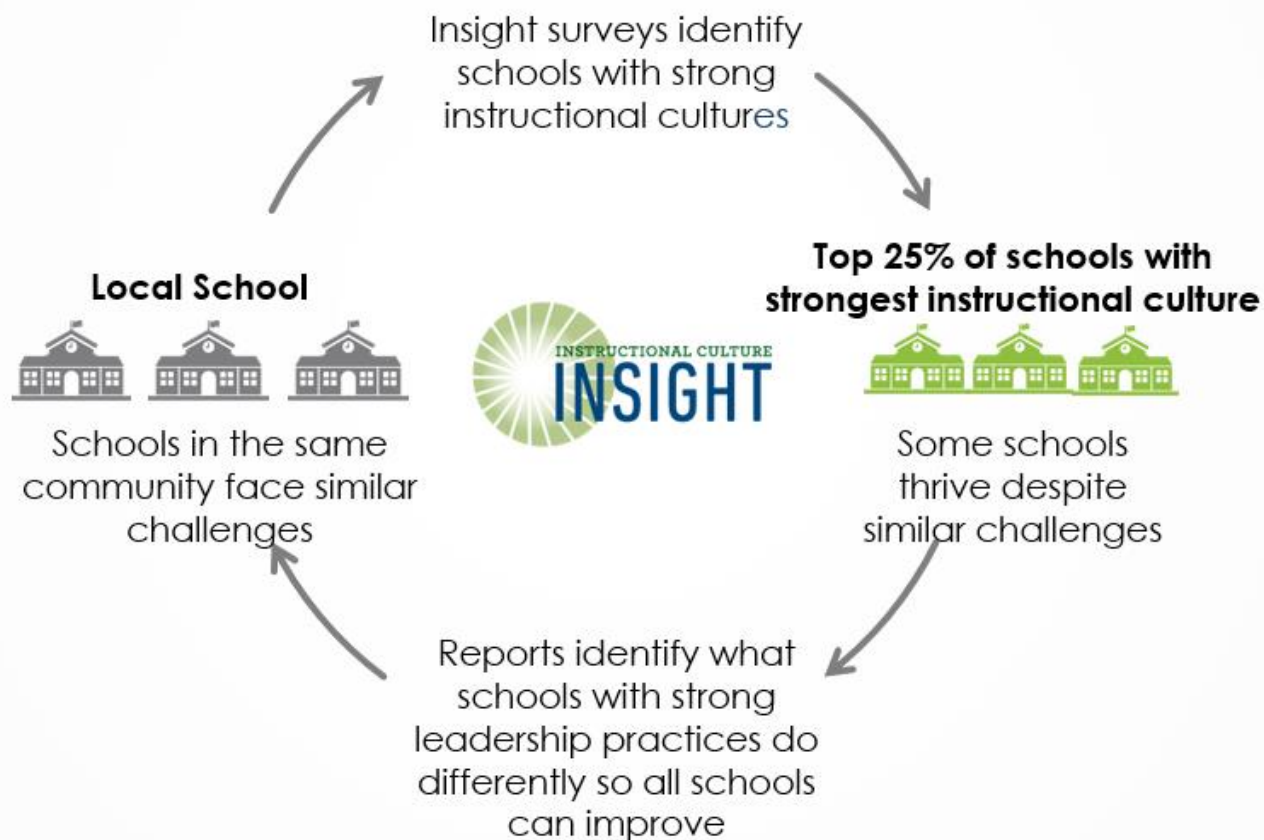


## How the Insight cycle works in schools: A cycle of continuous improvement





## Insight helps school leaders build strong cultures by learning from what successful exemplars do differently.



# Clay County Insight Results

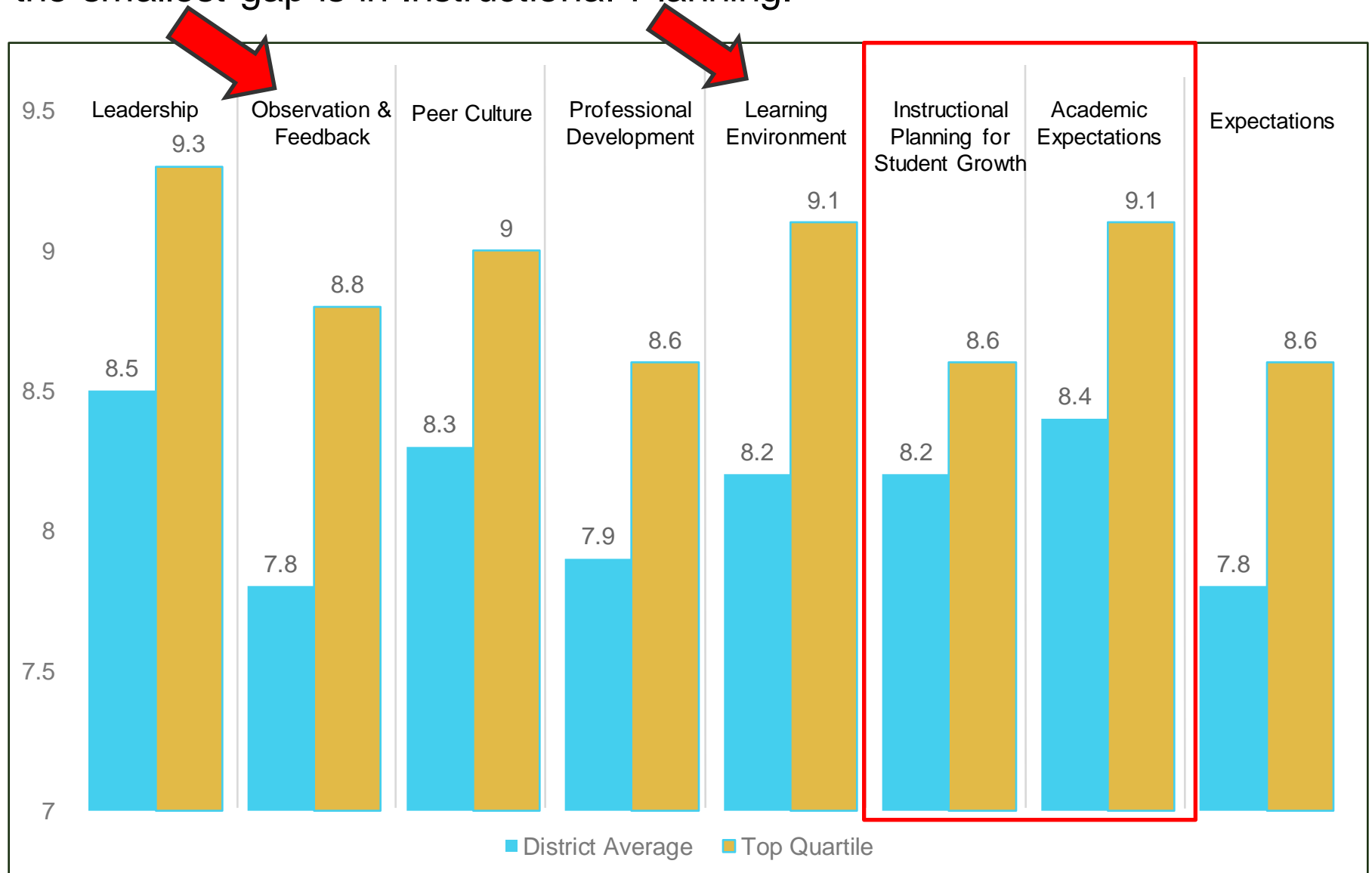
<b>Insight Category Increases</b>	<b>Clay Winter 16-17</b>	<b>Clay Winter 17-18</b>	<b>Annual Growth</b>
Instructional Culture Index Score	8.0	8.5	<b>+0.5</b>
Schools Meeting Top Quintile Criteria for Clay	9.1	9.4	<b>+0.3</b>
Overall Satisfaction with the Learning Environment	8.1	8.2	<b>+0.1</b>
Overall Satisfaction with Instructional Planning/Student Growth	7.9	8.2	<b>+0.3</b>
Overall Satisfaction with Observation and Feedback	7.3	7.8	<b>+0.5</b>
Overall Satisfaction with Professional Development	7.5	7.9	<b>+0.4</b>
Overall Satisfaction with Evaluation	7.6	7.8	<b>+0.2</b>
Overall Satisfaction with Peer Culture	7.8	8.3	<b>+0.5</b>
Overall Satisfaction with Leadership	8.2	8.5	<b>+0.3</b>
Overall Satisfaction with Academic Expectations	8.0	8.4	<b>+0.4</b>
Overall Satisfaction with Career Progression	6.4	6.6	<b>+0.2</b>
Overall Satisfaction with Compensation	4.5	4.8	<b>+0.3</b>
Overall Satisfaction Family & Community Engagement	8.2	8.6	<b>+0.4</b>



# Clay County vs National Insight Results

<b>Insight Category Increases</b>	<b>Clay 17-18</b>	<b>National 17-18</b>	<b>Annual Growth</b>
Instructional Culture Index Score	8.5	7.5	<b>+1.0</b>
Schools Meeting Top Quintile Criteria for Clay	9.4	9.2	<b>+0.2</b>
Overall Satisfaction with the Learning Environment	8.2	7.1	<b>+1.1</b>
Overall Satisfaction with Instructional Planning/Student Growth	8.2	7.5	<b>+0.7</b>
Overall Satisfaction with Observation and Feedback	7.8	7.3	<b>+0.5</b>
Overall Satisfaction with Professional Development	7.9	7.3	<b>+0.6</b>
Overall Satisfaction with Evaluation	7.8	7.4	<b>+0.4</b>
Overall Satisfaction with Peer Culture	8.3	7.6	<b>+0.7</b>
Overall Satisfaction with Leadership	8.5	7.6	<b>+0.9</b>
Overall Satisfaction with Academic Expectations	8.4	7.6	<b>+0.8</b>
Overall Satisfaction with Career Progression	6.6	6.5	<b>+0.1</b>
Overall Satisfaction with Compensation	4.8	5.5	<b>-0.7</b>
Overall Satisfaction Family & Community Engagement	8.6	7.9	<b>+0.9</b>

The largest gaps between top-quartile schools and the district average were noticed in Observation & Feedback and Learning Environment, while the smallest gap is in Instructional Planning.





## **TOP QUARTILE SCHOOLS for 2017-18**

School	Instructional Culture Index
Argyle Elementary	9.9
Orange Park Elementary	9.9
Paterson Elementary	9.7
Fleming Island Elementary	9.6
Shadowlawn Elementary	9.5
Keystone Heights Elementary	9.5
Lake Asbury Elementary	9.2
W E Cherry Elementary	9.1
Clay Virtual Academy	9.0
Montclair Elementary	9.0





## Clay County Schools with the Largest Growth 2017-18

School	2017-18 Index Score	Instructional Culture Index Annual Growth
Argyle Elementary	9.9	+3.3
Keystone Heights Jr Sr High	7.9	+1.8
S Bryan Jennings Elementary	8.7	+1.5
Ridgeview Elementary	8.9	+1.4
Orange Park Elementary	9.9	+1.4
Lakeside Junior High	7.9	+1.3
Fleming Island Elementary	9.6	+1.3
Grove Park Elementary	8.6	+1.2
Montclair Elementary	9.0	+1.1
Ridgeview High	8.0	+1.1



# Mid-Year Assessment Data



# K-3 Reading i-Ready Data



## Performance by School and Grade Report

Academic year: Current (2017-2018)  
 Subject: Reading  
 Define "On Level": Standard View

Show: Window 1 - 08/21/2017 - 10/13/2017  
 Compare: Window 2 - 01/08/2018 - 02/16/2018

### All Schools

● Window 2 - 01/08/2018 - 02/16/2018 ● Window 1 - 08/21/2017 - 10/13/2017

Grade	% Students On or Above Level	Student Placement Distribution (%)			Average Scale Score	Number of Students Assessed	Number of Total Students
		Below Level (Includes Emerging)	On Level	Above Level			
Grade K	76%	24%	75%	1%	385	2,218	2,398
	30%	70%	30%	<1%	351	2,218	2,276
Grade 1	48%	52%	47%	1%	438	2,207	2,453
	18%	82%	18%	<1%	404	2,207	2,358
Grade 2	62%	38%	56%	6%	498	2,270	2,487
	36%	64%	35%	<1%	470	2,270	2,408
Grade 3	75%	25%	72%	3%	531	2,319	2,584
	58%	42%	57%	<1%	511	2,319	2,484



# K-8 Math i-Ready Data



## Performance by School and Grade Report

Academic year: Current (2017-2018)  
 Subject: Math  
 Define "On Level": Standard View

Show: Window 1 - 08/21/2017 - 10/13/2017  
 Compare: Window 2 - 01/08/2018 - 02/16/2018

### All Schools

● Window 2 - 01/08/2018 - 02/16/2018 ● Window 1 - 08/21/2017 - 10/13/2017

Grade	% Students On or Above Level	Student Placement Distribution (%)			Average Scale Score	Number of Students Assessed	Number of Total Students
		Below Level (Includes Emerging)	On Level	Above Level			
Grade K	63%	37%	63%	<1%	368	2,173	2,398
	26%	74%	26%	0%	348	2,173	2,276
Grade 1	39%	61%	39%	0%	396	2,209	2,453
	11%	89%	11%	0%	377	2,209	2,358
Grade 2	43%	57%	43%	0%	423	2,274	2,487
	18%	82%	18%	0%	407	2,274	2,408
Grade 3	53%	47%	53%	0%	448	2,319	2,584
	23%	77%	23%	0%	432	2,319	2,484
Grade 4	62%	38%	61%	<1%	469	2,442	2,709
	37%	63%	37%	<1%	455	2,442	2,614
Grade 5	61%	39%	60%	<1%	484	2,408	2,733
	42%	58%	42%	0%	474	2,408	2,653
Grade 6	54%	46%	54%	<1%	494	2,772	2,943
	41%	59%	41%	<1%	486	2,772	2,837
Grade 7	30%	70%	30%	0%	490	2,222	2,493
	25%	75%	25%	0%	490	2,222	2,356
Grade 8	11%	89%	11%	0%	489	1,449	1,695
	6%	94%	6%	0%	486	1,449	1,545



# 2017-2018 i-Ready Implementation Insights

## Successes

- Average Pass Rate of **81%** on Elementary Reading Lessons (students receiving targeted instruction through their online path)
- Average Pass Rate of **71%** on Elementary Math Lessons (students receiving targeted instruction through their online path)
- i-Ready Professional Development offered 90 sessions for CCDS teachers on best practices for classroom use
- Schools implementing incentive programs for i-Ready growth and achievement to celebrate student accomplishments
  - FIE i-Ready Dance
  - ROE i-Ready Reward Shop
  - [WEC Age Appropriate Incentives featured on i-Ready Central](#)



# 2017-2018 i-Ready Implementation Insights

## Areas of Opportunity



- Junior High Math
  - Discuss ways to increase student motivation
  - Discuss scheduling opportunities to allow more students access at school
- Elementary Math
  - Discuss scheduling opportunities to allow for additional targeted instruction in small groups based on i-Ready data
- Increase number of devices so that more students can access i-Ready in class without having to walk to a computer lab



# Achieve3000 Average Lexile Growth By Grade

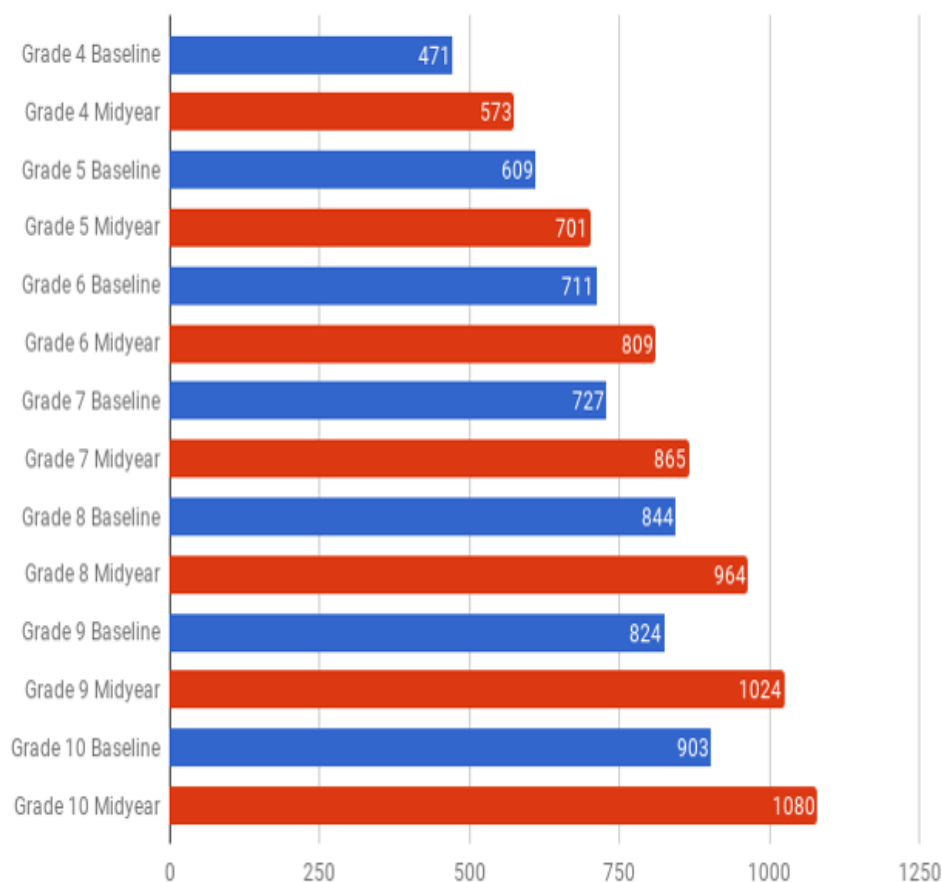
## Performance By Grade Level

Academic Year: Current (2017-2018)

Baseline: 08/15/2017 – 09/05-2017

Subject: Reading

Midyear: 12/01-2017 – 12/15/2017



■ Average Baseline Lexile Scores

■ Average MidYear Lexile Score

Grade Level	Average Lexile Gain	Annual Lexile Expected Growth
Grade 4	102	94
Grade 5	92	78
Grade 6	98	69
Grade 7	138	63
Grade 8	120	54
Grade 9	200	52
Grade 10	177	48



# 2017-18 Achieve3000 Implementation

## Grade Levels 4-6



### Successes

- Student Lexile Levels have **increased by 51 points.**
- Students are scoring a 75% or higher on their **1<sup>st</sup> try 98.4% of the time.**

### Areas of Opportunity

- 30% of Elementary Students are currently on track to be college and career ready.
  - Increase teacher modeling of strategies to help students navigate complex informational text
  - Increase number of devices so more students have a greater opportunity to interaction with Achieve3000

# 2017-18 Achieve3000 Implementation

## Grade Levels 7-12



### Successes

- Student Lexile Levels have **increased by 56 points.**
- Students are scoring a 75% or higher on their **1<sup>st</sup> try 98.9% of the time.**

### Areas of Opportunity

- 32% of Secondary Students are currently on track to be college and career ready.
  - Increase teacher modeling of strategies to help students navigate complex informational text
  - Increase number of devices so more students have a greater opportunity to interaction with Achieve3000





Thank You!

