



Superintendent's Update

January 9, 2020



Presentation Objectives

- ❖ **Graduation Rate**
- ❖ **Controlled Open Enrollment**
- ❖ **Champion of Change**



Graduation Data Presentation



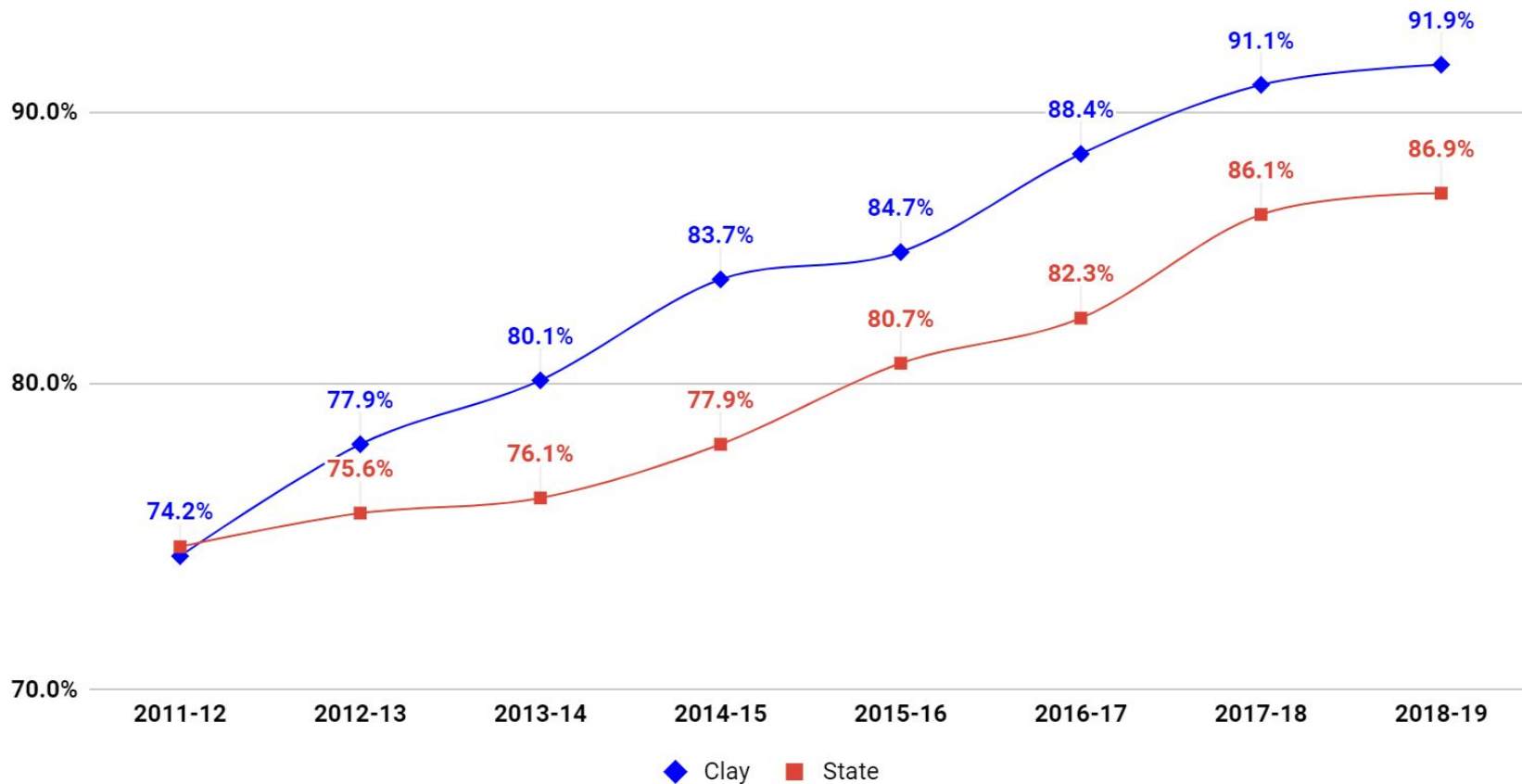
91.9%

GRADUATION RATE
HIGHEST IN DISTRICT HISTORY



#ELEVATECLAY

Graduation Rates - Clay vs. State





Highlights

- ❖ District graduation rate highest ever at 91.9%
- ❖ Increase of 17.7 percentage points since 2011-12
- ❖ Clay is in the top ten (8th) of Florida for highest grad rate
- ❖ District rate outpaced the State by 5.0 percentage points
- ❖ All high schools are at or above 90% for the first time ever



Subgroup Graduation Data

SUBGROUP GRAD RATES	2014-15	2015-16	2016-17	2017-2018	2018-19	17-18 VS 18-19
WHITE	83.3%	84.8%	87.8%	90.0%	90.6%	0.6%
HISPANIC	83.6%	84.4%	88.4%	91.0%	96.1%	5.0%
BLACK	82.1%	82.2%	88.7%	91.1%	92.9%	1.8%
TWO/THREE RACES	87.7%	86.1%	89.9%	94.5%	95.6%	1.1%
ASIAN	95.2%	98.6%	97.7%	98.6%	97.6%	-1.0%
AT-RISK STUDENTS	63.4%	71.7%	77.4%	78.3%	81.2%	2.9%
STUDENTS WITH DISABILITIES	68.1%	66.4%	74.3%	82.3%	87.7%	5.4%
ENGLISH LANGUAGE LEARNERS	60.0%	72.0%	79.3%	77.5%	87.0%	9.5%
ECON. DISADVANTAGED	75.9%	77.8%	81.8%	85.5%	86.9%	1.4%



Comparison to Similar Sized Districts

County	2015-16	2016-17	2017-18	2018-19	4 Yr. Comparison
Clay	84.7	88.4	91.1	91.9	+7.2
Alachua	78.4	82.7	88.0	88.5	+10.1
Escambia	76.1	79.5	80.7	84.8	+8.7
Marion	81.8	78.5	81.8	83.8	+2.0
Okaloosa	84.4	86.2	88.1	90.2	+5.8
St. Johns	91.2	90.9	93.3	94.3	+3.1
St. Lucie	86.8	90.1	91.8	88.3	+1.5
State	81.0	82.3	86.1	86.9	+5.9



Graduation Rates by School

High School	2015-16	2016-17	2017-18	2018-19	1 Yr. Comparison	4 Yr. Comparison
Clay High	91.0%	90.2%	94.2%	93.9%	-0.3%	2.9%
Fleming Island	97.4%	98.4%	97.3%	98.2%	0.9%	0.8%
Keystone	82.0%	86.0%	91.5%	91.9%	0.4%	9.9%
Middleburg	81.3%	81.7%	88.1%	90.0%	1.9%	8.7%
Oakleaf	94.7%	93.8%	95.8%	97.0%	1.2%	2.3%
Orange Park	82.2%	85.9%	91.1%	94.0%	2.9%	11.8%
Ridgeview	85.5%	89.5%	95.6%	96.8%	1.2%	11.3%
Clay Virtual	56.3%	70.8%	81.6%	93.2%	11.6%	36.9%
CLAY COUNTY	84.7%	88.4%	91.1%	91.9%	+ 1.2%	+7.2%



Post Secondary Readiness

HIGH SCHOOL	2016 READING PSR	2019 READING PSR	READING 3 YR Comparison	2016 MATH PSR	2019 MATH PSR	MATH 3 YR Comparison
CLAY HIGH SCHOOL	52%	79%	+27%	43%	60%	+17%
FLEMING ISLAND HIGH SCHOOL	67%	87%	+20%	57%	77%	+20%
KEYSTONE HEIGHTS JR/SR HIGH	65%	76%	+11%	51%	52%	+1%
MIDDLEBURG HIGH	62%	79%	+17%	42%	56%	+14%
OAKLEAF HIGH SCHOOL	63%	82%	+19%	39%	67%	+28%
ORANGE PARK HIGH	60%	80%	+20%	37%	57%	+20%
RIDGEVIEW HIGH SCHOOL	63%	86%	+24%	52%	70%	+18%
DISTRICT TOTAL	61%	82%	+21%	45%	64%	+19%



Area of Opportunity & Next Steps

- ❖ Continue refining our data tracking tool to assist schools with monitoring graduating cohorts.
- ❖ Continue monthly graduation review conferences with district administration to problem solve strategies for increasing the number of graduates and college readiness.
- ❖ Continue utilizing our ACT, SAT, and PSAT boot-camp program coupled with resources.

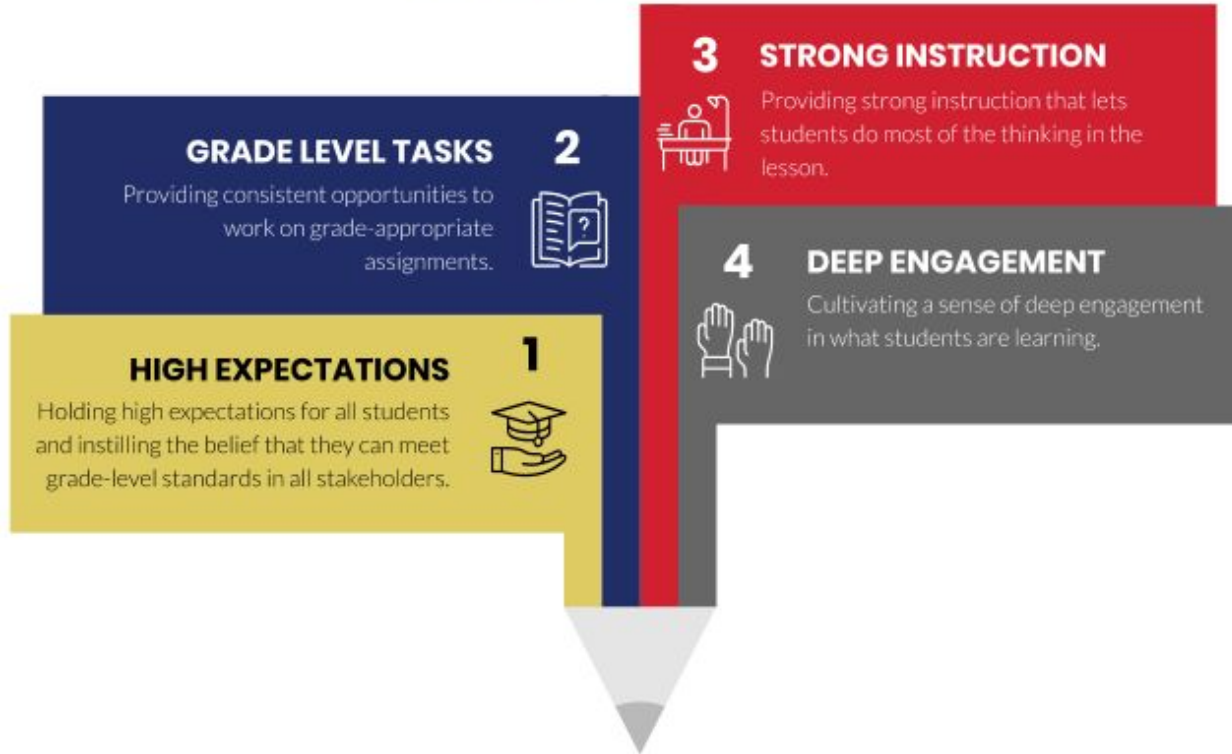


Area of Opportunity & Next Steps

- ❖ Continue to utilize Elevation Academy to assist students that are “At-Risk” for not graduating on time.
- ❖ Increase the use of the Khan Academy blended learning path tied specifically to SAT preparation.
- ❖ Utilize multiple SAT School Days to assist seniors with meeting their reading and math graduation requirement.



THEORY OF ACTION





Controlled Open Enrollment for 2020-2021 School Year



Controlled Open Enrollment (COE)

- ❖ Required per Florida Statute 1002.31
- ❖ School Districts Must Establish a Capacity Threshold and Allow Student Access
- ❖ Clay County COE Threshold 85% Capacity
- ❖ Designed to Give Parents Additional Educational Offerings
- ❖ Timeline for Controlled Open Enrollment
 - **Window Opens January 27th- February 28th**



2020- 2021 Open Schools & Seats

2020-2021 COE Schools	Available Seats
Elementary - Grades K-6 (excludes VPK)	
Coppergate Elementary	30
Montclair Elementary	64
RideOut Elementary	61
S Bryan Jennings	68
Thunderbolt Elementary	55
Junior High - Grades 7-8	
Lakeside Junior	100
Oakleaf Junior	64
Orange Park Junior	100
Senior High - Grades 9-12	
Clay High	69
Orange Park High	380
Ridgeview High	100
Total number of seats available in the district	1,091



COE Lottery Process

Pursuant to open enrollment, if there are more applicants than seats available at a specific school, a lottery shall be conducted to determine which students are granted admission. Students in the following categories will receive priority consideration in a lottery selection process:

- ❖ Students residing in the District
- ❖ Active Military Families Who Military Orders Required Move
- ❖ Relocated Due to Foster Care
- ❖ Relocated Due to Court Order



Clay County School Choice Showcase

Opportunity for families to meet school leadership and learn about open COE schools and other choice programs offered in Clay County District Schools for the 2020-2021 school year.

- ❖ When: Saturday, February 8th from 10 a.m. to 1 p.m.
- ❖ Location: Orange Park Mall (JCPenney Courtyard)



Champions of Change



Champions of Change

Little Deeds. Huge Impact.

- ❖ Makayla Buchanan,
Executive Director of
Clay Education Foundation
- ❖ The Bailey Group



NATIONAL LAW ENFORCEMENT APPRECIATION DAY





Thank you!