

HARVARD • JOLLY

ARCHITECTURE

DESIGNING POSSIBILITIES  
SINCE 1938

# Clay County District Schools Middleburg Elementary School Renovation/Remodel Building 7



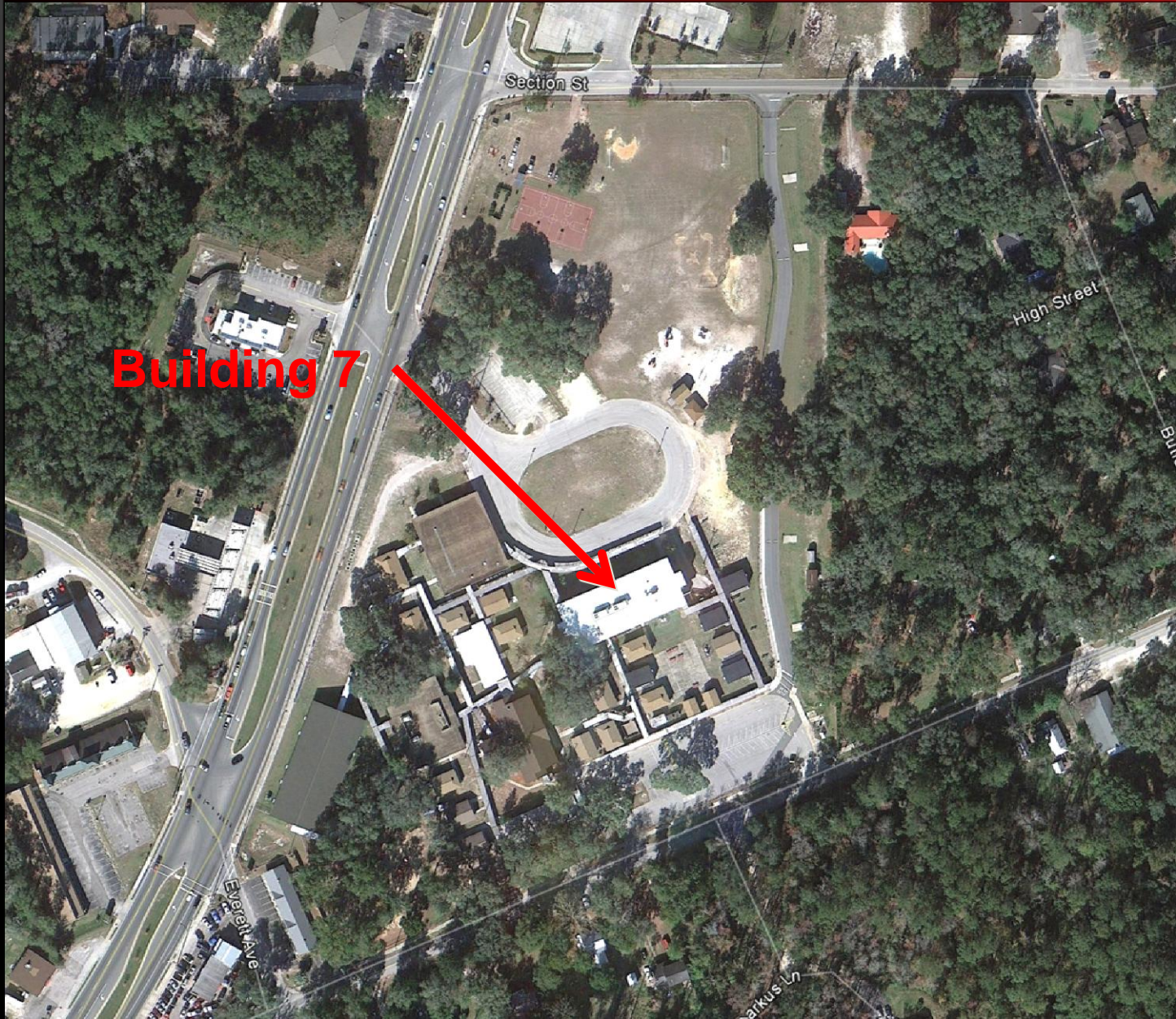


HARVARD • JOLLY

ARCHITECTURE

DESIGNING POSSIBILITIES  
SINCE 1938

Project Site



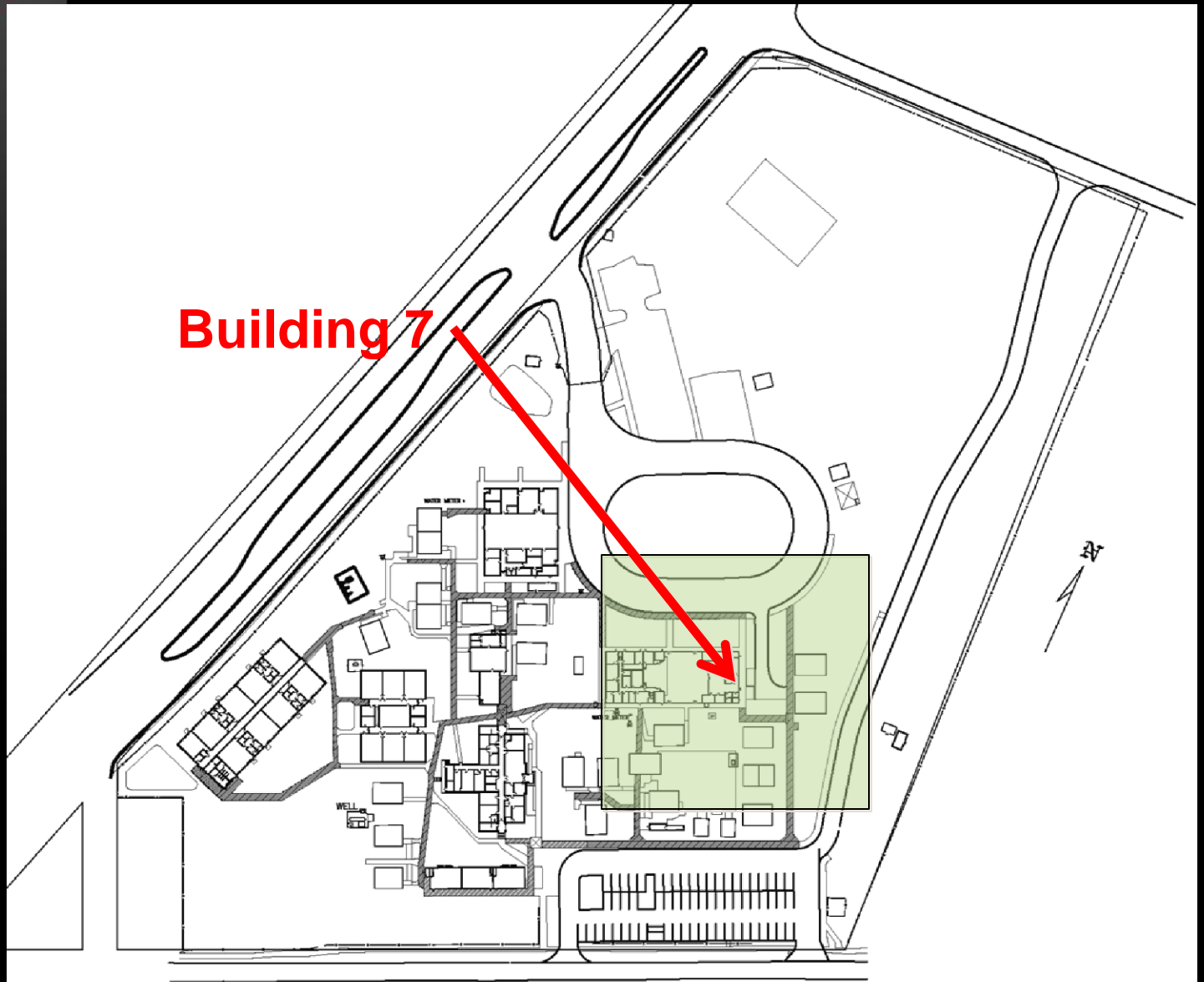
Building 7

Section St

High Street

Everett Ave

Sarkus Ln



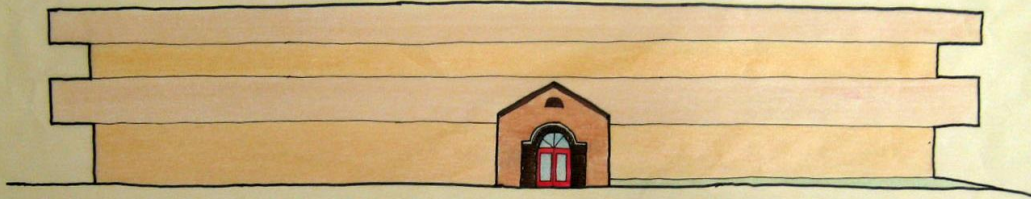
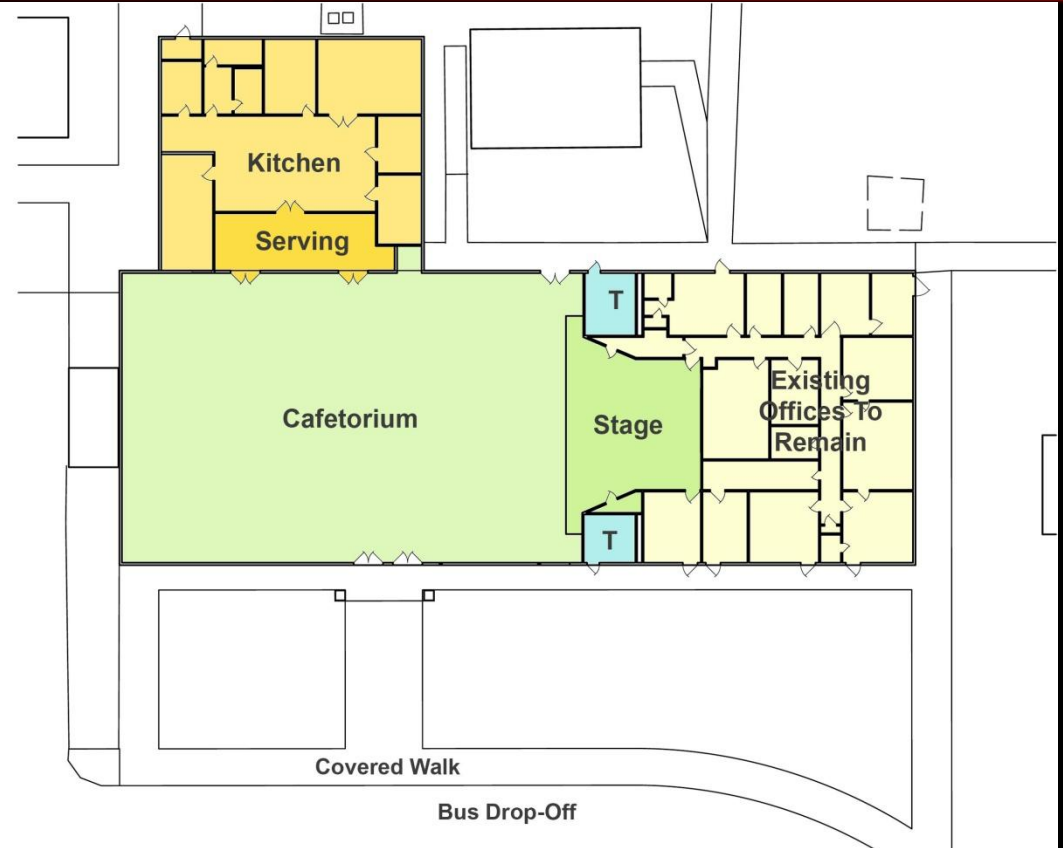


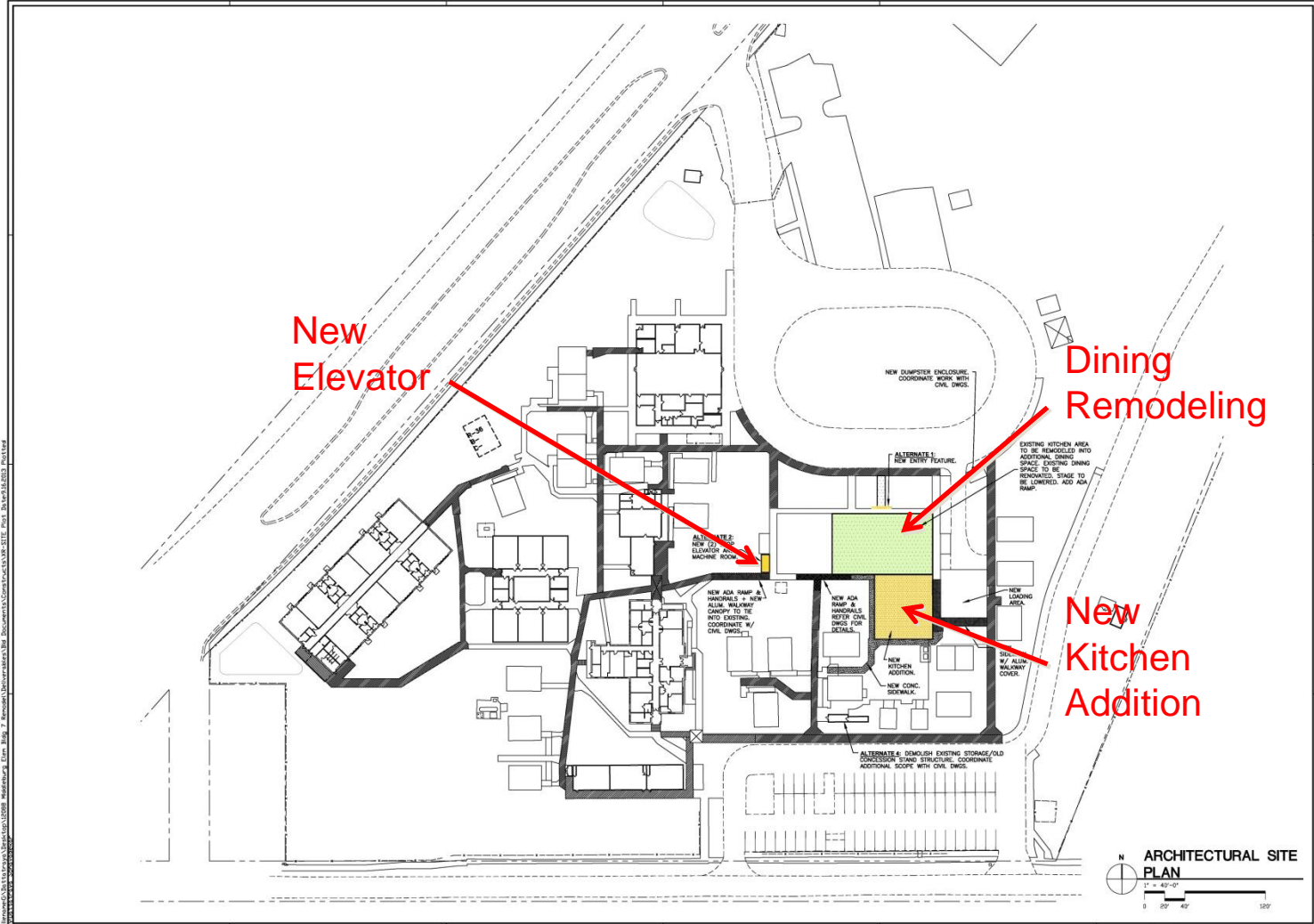
HARVARD • JOLLY

ARCHITECTURE

DESIGNING POSSIBILITIES  
SINCE 1938

Selected Option





File Name: C:\Users\jolly\Documents\Projects\2019\Middleburg\_Elem\_School\_7\_Cafeteria\_Expansion\2019\_09\_19\_13\Site\_Plan\_2019\_09\_13.dwg  
 Plot Date: 09/19/2019  
 Plot Time: 10:00:00 AM  
 Plot Scale: 1/8" = 1'-0"  
 Plot Orientation: Landscape  
 Plot Color: Black  
 Plot Lineweight: 0.20  
 Plot Linetype: Solid  
 Plot Font: Arial, 10  
 Plot Title: Middleburg Elementary School Bldg. 7 Cafeteria Expansion  
 Plot User: jolly

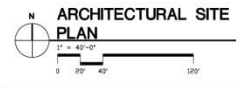
**HARVARD • JOLLY**  
ARCHITECTURE

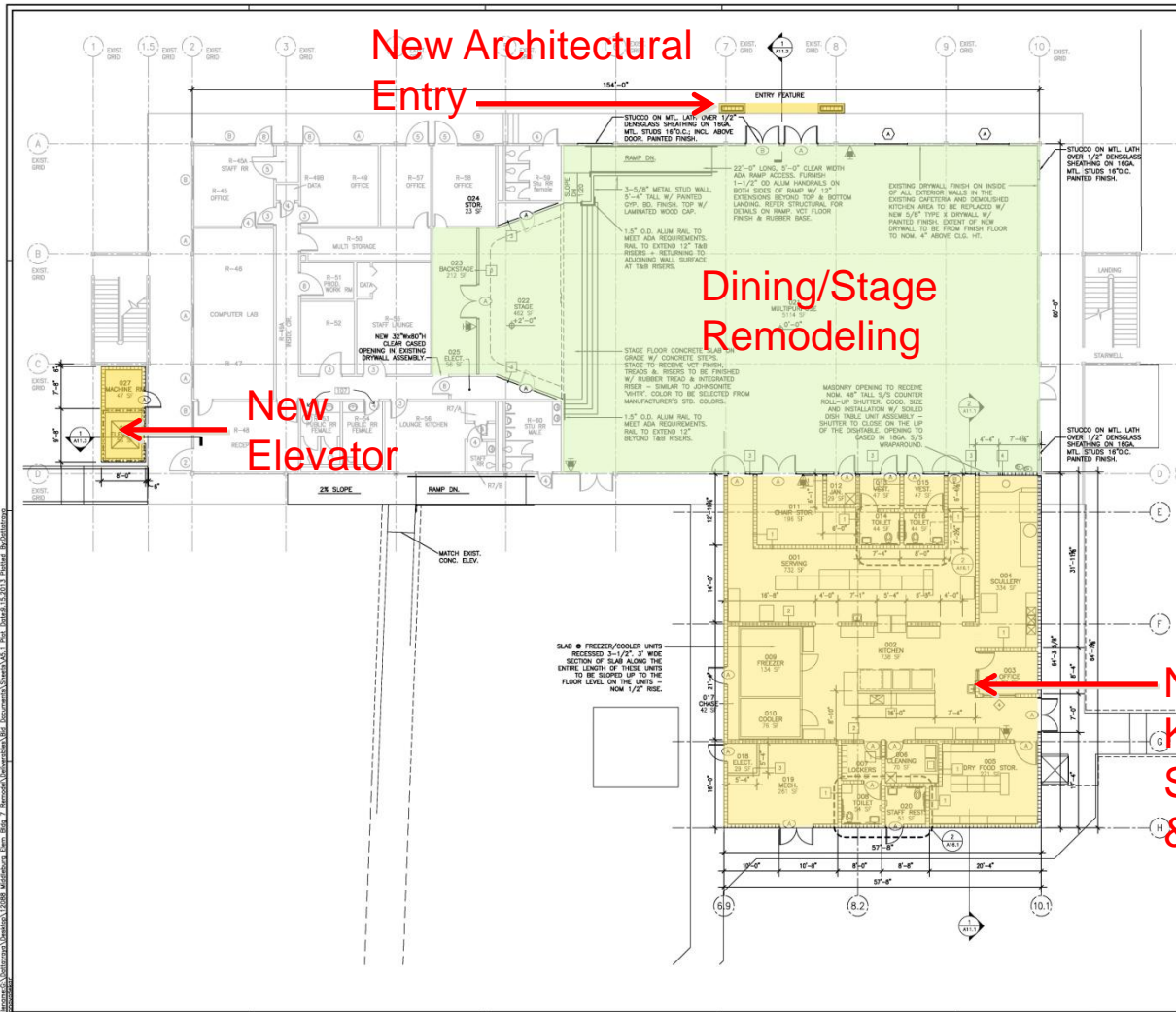
81 Lakeside, Suite 200  
 Middleburg, Florida 32068  
 Phone: 352-225-2222  
 Fax: 352-225-2223  
 Website: www.harvardjolly.com

**MIDDLEBURG ELEMENTARY SCHOOL**  
**BLDG. 7 CAFETERIA EXPANSION**  
 3958 Main Street, Middleburg, Florida 32068  
 BID DOCUMENTS

Comm. No: 120988-03  
 Date: 09/19/13  
 Drawn: DNS  
 Revised:

© 2019 HARVARD JOLLY, INC.  
**AS3.1**





**PARTITION TYPE LEGEND**

- 1 8" CMU WALL. COOD. DETAILS W/ STRUCTURAL DWGS.
- 2 8" CMU LOAD BEARING WALL. REFER STRUCTURAL FOR ADDITIONAL INFORMATION.
- 3 TYPICAL SOUNDPROOFED PARTITION TO UNDERSIDE OF DECK. 3-5/8" METAL STUD FRAMING TO UNDERSIDE OF DECK W/ 5/8" TYPE X FR. BG. FINISH. FURNISH CEMENT BOARD FINISH WHERE TILE FINISH IS SCHEDULED.
- 4 NON-LOAD BEARING 8" CMU WALL TO UNDERSIDE OF STRUCTURE.
- 5 8" GAW. MTL. STUD WALL TO 4" ABOVE CLG. BRACE TOP OF WALL TO STRUCTURE ABOVE. 5/8" FIBERGLASS ADQU-TOPUSP INTERIOR PANEL ON APPROVED EQUAL FINISH - PAINTED AS SCHEDULED.

**WALL NOTES**

- 1. REFER TO ALL (LIFE SAFETY) DRAWINGS FOR RATED WALL TYPES AND IDENTIFICATIONS.
- 2. ALL INTERIOR NON-LOAD BEARING SHALL EXTEND TO DECK ABOVE.
- 3. ALL FIRE-RATED AND SOUND-RATED NON-LOAD BEARING SHALL EXTEND TO UNDERSIDE OF DECK ABOVE. UNLS.
- 4. ALL WALLS ENCLOSING SPACES SCHEDULED FOR EXPOSED STRUCTURE. CEILING ON AS IS DRAWINGS SHALL BE EXTENDED TO DECK ABOVE. SEE A13 FOR DETAILS/OPENINGS.
- 5. ALL STUD WALLS TO HAVE HIGH IMPACT 5/8" C.W.B.
- 6. ALL WALL FRAMING STUDS TO BE 20 GAUGE U.S.G.

**GENERAL NOTES**

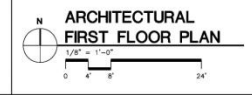
- 1. PROVIDE SOUND ATTENUATION INSULATION IN ALL STUD WALLS ENCLOSING CLASSROOMS EXTEND TO DECK AND SEE 17 / A13.2.
- 2. SEAL ALL JOINTS AT TOP OF ALL WALLS TO DECK. TYPICAL.
- 3. ALL EXTERIOR WALLS SHALL BE SEALED TO UNDERSIDE OF ROOF TO CREATE AN AIR TIGHT BUILDING ENCLOSURE.
- 4. ALL NON-RATED AND NON-ACoustICAL PARTITIONS SHALL EXTEND A MINIMUM OF 4" ABOVE THE FINISHED CEILING.
- 5. ALL WALLS ENCLOSING MECHANICAL, ELECTRONIC OR TELECOMMUNICATIONS ROOMS SHALL EXTEND TO UNDERSIDE OF ROOF ABOVE.
- 6. PROVIDE 1/4" FIBERGLASS OVER ALL 4 WALLS FLOOR TO CEILING OVER C.W.B. AND/OR C.W.B. IN ALL COMMUNICATIONS ROOMS U.S.G. COORDINATE SIZES OF CEILING AND PART WITH THE SCHEDULED PAINT.
- 7. WALL RATINGS SHOWN FOR EXISTING PURPOSES ONLY. INTERIOR LOAD BEARING WALLS AND COLUMNS ARE 2 & 3 HOUR RATED AS REQUIRED. REFER TO ALL (LIFE SAFETY) DRAWINGS.

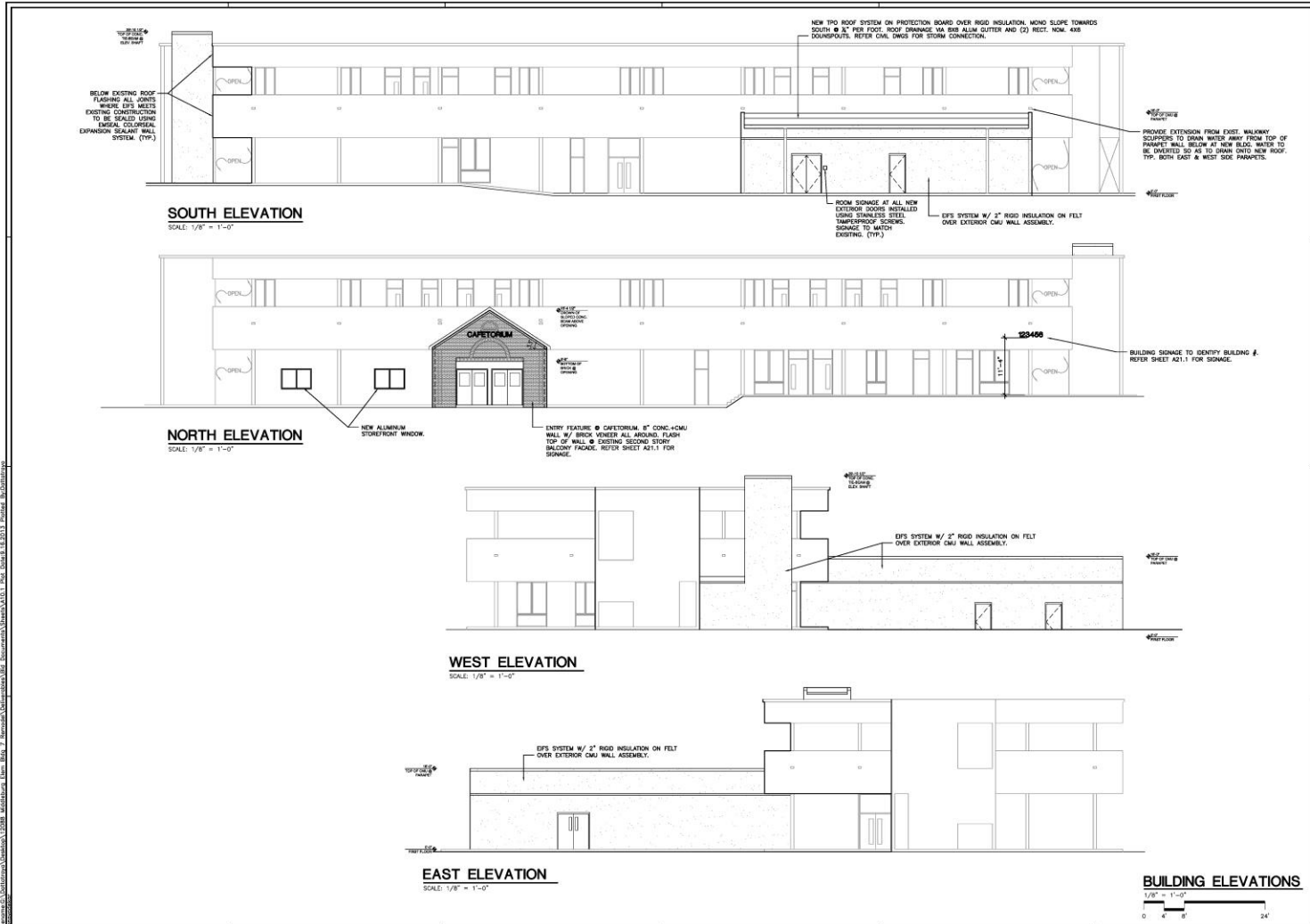
**HARVARD • JOLLY**  
ARCHITECTURE

**MIDDLEBURG ELEMENTARY SCHOOL  
BLDG. 7 CAFETERIA EXPANSION**  
3959 Main Street, Middleburg, Florida 32068  
BID DOCUMENTS

Comm No: 12088.00  
Date: 09/19/13  
Drawn: DNS  
Revised:

© 2013 HARVARD JOLLY, INC.  
A5.1





**HARVARD • JOLLY**  
ARCHITECTURE

P. LUMIN, P.E., ARCHITECT  
C. JOLLY, P.E., ARCHITECT  
3958 MAIN STREET, MIDDLEBURG, FLORIDA 32068  
407.885.1111  
WWW.HARVARDJOLLY.COM

**MIDDLEBURG ELEMENTARY SCHOOL**  
**BLDG. 7 CAFETERIA EXPANSION**  
3958 Main Street, Middleburg, Florida 32068  
BD DOCUMENTS

Drawn: DNS  
Revised:

Sheet No: 12088.00  
Date: 09/19/13

© 2013 HARVARD JOLLY, INC.



**Middleburg Elementary School Building 7 Cafeteria Expansion**

← Sept 19, 2013

Activity	Duration	Activity Begin Date	Activity End Date	2013	2013	2013	2013	2013	2013	2013	2013	2013	2013	2013	2013	2013	2013	2013	2013	2013	2013	2013	2013	2014	2014	2014	2014	2014	2014	2014	2014	2014					
				Jan	Feb	Mar	Apr	May	Jun	Jul	Aug	Sep	Oct	Nov	Dec	Jan	Feb	Mar	Apr	May	Jun	Jul	Aug	Sep	Oct	Nov	Dec	Jan	Feb	Mar	Apr	May	Jun	Jul	Aug	Sep	
Notice To Proceed for Design	1	8 Jan' 2013	8 Jan' 2013	█																																	
Schematic Design	30	8 Jan' 2013	6 Feb' 2013	█	█																																
CCDS Review		7 Feb' 2013	1 Mar 13		█																																
Preliminary Design	60	2 Mar 13	30 Apr 13		█	█	█																														
CCDS Review	30	1 May 13	31 May 13					█																													
100% Construction Documents	65	1 Jun 13	5 Aug 13						█	█	█	█																									
CCDS Relocate Portables	53	10 Jun 13	2 Aug 13							█	█	█																									
CCDS Review	26	6 Aug 13	30 Aug 13									█																									
Bldg Permit Review	26	6 Aug 13	30 Aug 13									█																									
AE Final Bid Documents	10	31 Aug 13	9 Sep 13																																		
CCDS Board Backup Due	1	11 Sep 13	11 Sep 13																																		
CCDS Board Approval of Final Plans	1	19 Sep 13	19 Sep 13																																		
Advertisement for Bids (3, 10, 17 Oct)	35	3 Oct 13	6 Nov 13																																		
Mandatory Pre-Bid Meeting	1	22 Oct 13	22 Oct 13																																		
Bid Opening	1	6 Nov 13	6 Nov 13																																		
CCDS Board Backup Due	1	13 Nov 13	13 Nov 13																																		
CCDS Board Contract Award	1	21 Nov 13	21 Nov 13																																		
Notice To Proceed for Construction	1	23 Nov 13	23 Nov 13																																		
Contractor Secure Construction Area	10	23 Nov 13	1 Dec 13																																		
Construct Kitchen Addition	250	23 Nov 13	30 Jul 14																																		
Relocate Kitchen Equipment	7	1 Jun 14	7 Jun 14																																		
Remodel Kitchen to Dining	56	5 Jun 14	30 Jul 14																																		
Renovate Dining & Stage	56	5 Jun 14	30 Jul 14																																		
Substantial Completion	1	30 Jul 14	30 Jul 14																																		
Final Completion	30	31 Jul 14	29 Aug 14																																		

Last Day for Teachers Thursday June 6, 2013  
 Teachers Back to School Tuesday August 6, 2013  
 Students Back to School Tuesday August 13, 2013  
 Thanksgiving Break Monday Nov 25 - Friday Nov 29, 2013  
 Last Day for Students Wednesday June 4, 2014  
 Teachers Back to School Wednesday August 5, 2014  
 Students Back to School Tuesday August 12, 2014



**Middleburg Elementary School Building 7 Cafeteria Expansion**

**Statement of Probable Cost**

**Construction Cost Projection – Phase III Final Documents**      September 12, 2013

Cafeteria Expansion

New Kitchen, Serving, Toilets and Chair Storage,  
Fire Protection System – Entire First Floor,  
ADA Access to First Floor, Associated Sitework

**Total Projected Base Bid** **\$1,316,500**

By School Board of Clay County

New Walk in Refrigerator/Freezer \$ 47,000

New Kitchen Hood \$ 30,000

**Total Projected Base Bid + SBCC Costs** **\$1,393,500**

Additive Alternates

#1 Architectural Entry Feature \$ 45,000

#2 Elevator \$ 100,000

#3 Tie HVAC Controls into BAS \$ 30,000

#4 Demo Existing Storage Shed \$ 2,500

**Total Projected Construction Cost** **\$1,571,000**

Notes

Existing Relocatables relocated by District.

Food Service Equipment to be relocated from Existing. Other Kitchen Equipment by District.

Existing Student Toilets adjacent Dining Room to remain as is.

HARVARD • JOLLY

ARCHITECTURE

DESIGNING POSSIBILITIES  
SINCE 1938

# Clay County District Schools Middleburg Elementary School Renovation/Remodel Building 7

