



© 2014 Clay County District Schools

---

# **Educational Facility Plan (EFP)**

## **Planning, Growth, Capacity**

### **Lance Addison**



# Presentation Objectives

- **Growth, Enrollment, and Student Data Trends**
- **Areas of Growth in Clay County**
- **Projected School Needs**



## Clay County District Schools Current/Future Summary

- Currently have 43 CCDS managed schools and two charter schools
  - Projected to grow to 45 district-managed schools within the next 10-20 years
  - Projected to build classroom additions at four sites
- Current District Membership enrollment is 43,013 (May 2023) students
  - Projected to enroll >11,800 more students in 10-20 years
- >25,000 new homes are projected in the next 10-20 years
- CCDS new projects; approximately \$200 million to build new student stations based on **projected** demand of new students



# Clay County Population Growth

## Clay County Population Census Summary

County, City, and State	April 1	Total	April 1	Percent
	2020 (Census)	Change	2010 (Census)	Change
<b>Clay County</b>	<b>218,245</b>	<b>27,380</b>	<b>190,865</b>	<b>14.3</b>
Green Cove Springs	9,786	2878	6,908	41.7
Keystone Heights	1,446	96	1,350	7.1
Orange Park	9,089	677	8,412	8.0
Penney Farms	821	72	749	9.6
UNINCORPORATED	197,103	23,657	173,446	13.6

\* Source: Florida Population, Census Summary 2020, BEBR  
[https://www.bibr.ufl.edu/wp-content/uploads/2022/01/census\\_summary\\_2020.pdf](https://www.bibr.ufl.edu/wp-content/uploads/2022/01/census_summary_2020.pdf)



# Latest Clay County Population Estimates/Projections

Clay County Population Estimates					
County, City, and State	April 1 2022 (Estimate)	Total Change 2020-22	April 1 2010 (Census)	Inmates	Estimates less Inmates April 1, 2022
<b>Clay County</b>	<b>225,553</b>	<b>7,308</b>	<b>218,245</b>	<b>0</b>	<b>225,553</b>
Green Cove Springs	10,234	448	9,786	0	10,234
Keystone Heights	1,454	8	1,446	0	1,454
Orange Park	9,157	68	9,089	0	9,157
Penney Farms	832	11	821	0	832
UNINCORPORATED	203,876	6773	197,103	0	203,876

Source: BEBR Florida Estimates of Population 2022  
[https://www.bibr.ufl.edu/wp-content/uploads/2022/12/estimates\\_2022.pdf](https://www.bibr.ufl.edu/wp-content/uploads/2022/12/estimates_2022.pdf)

## \* 3.3% Population Increase in 2 years

Population Projections 2025-2050							
County	Estimates April 1, 2022	Projections, April 1					
		2025	2030	2035	2040	2045	2050
CLAY	225,553						
Low		221,200	224,800	225,500	223,700	220,800	217,800
Medium		235,400	249,800	261,400	270,300	277,700	284,700
High		249,500	274,800	297,400	316,900	334,700	<b>351,600</b>

Source: Bebr Volume 56, Bulletin 195, Apr. 2023  
[https://www.bibr.ufl.edu/wp-content/uploads/2023/04/projections\\_2023.pdf](https://www.bibr.ufl.edu/wp-content/uploads/2023/04/projections_2023.pdf)

# Historical 4 Year Growth Summary

## Clay County Schools

- 9.8% increase in student membership enrollment
- Equates to 3434 students
- Average Annual Growth Rate (AAGR) over the period is 3.4%
- COVID year included (negative growth rate) in calculation
- Population growth was 14.3% over a **10** year period (2010-2020 Census)



**CCDS IS GROWING AT A RAPID RATE**



# 10 Year COFTE Projections

## FDOE Education Estimating Conference

### Clay

#### 2023-24 to 2033-34 Capital Outlay FTE Forecast

	Actual 2020-21	Actual 2021-22	Actual 2022-23	Projected 2023-24	Projected 2024-25	Projected 2025-26	Projected 2026-27	Projected 2027-28	Projected 2028-29	Projected 2029-30	Projected 2030-31	Projected 2031-32	Projected 2032-33	Projected 2033-34
Births*	2,226	2,204	2,154	2,225	2,227	2,122	2,182	2,259	2,272	2,271	2,306	2,332	2,345	2,355
Grade														
PreK	365.16	437.49	461.45	450.77	446.11	460.31	469.64	470.88	474.41	480.73	484.77	487.16	489.23	491.09
Grade K	2,383.38	2,464.99	2,510.67	2,529.69	2,527.21	2,407.92	2,464.46	2,545.67	2,558.05	2,552.68	2,585.57	2,610.01	2,620.04	2,626.27
Grade 1	2,414.21	2,556.56	2,629.82	2,610.78	2,627.27	2,625.52	2,506.83	2,570.78	2,653.86	2,668.97	2,663.43	2,695.19	2,720.10	2,730.32
Grade 2	2,392.47	2,455.25	2,613.02	2,612.70	2,591.11	2,606.66	2,605.29	2,488.58	2,548.26	2,630.26	2,646.76	2,672.63	2,672.63	2,697.57
Grade 3	2,437.40	2,518.80	2,669.14	2,687.51	2,684.16	2,661.97	2,676.42	2,681.27	2,563.58	2,619.37	2,702.04	2,719.81	2,714.42	2,744.16
Grade 4	2,438.40	2,470.86	2,528.81	2,725.89	2,739.94	2,734.56	2,710.02	2,727.33	2,729.99	2,608.42	2,662.20	2,743.77	2,759.71	2,751.97
Grade 5	2,553.72	2,520.46	2,596.43	2,604.98	2,803.65	2,817.68	2,811.12	2,783.03	2,799.67	2,801.48	2,676.26	2,729.82	2,812.36	2,827.97
Grade 6	2,652.06	2,709.19	2,763.15	2,730.08	2,734.74	2,940.65	2,955.03	2,950.78	2,919.74	2,935.21	2,935.47	2,803.41	2,856.73	2,941.19
Grade 7	2,712.71	2,772.88	2,864.37	2,826.57	2,785.69	2,790.19	2,998.00	3,021.18	3,017.20	2,985.81	3,001.02	3,001.48	2,868.17	2,920.30
Grade 8	2,733.19	2,913.54	2,843.32	2,954.28	2,905.09	2,861.45	2,863.84	3,072.72	3,097.50	3,092.16	3,058.71	3,071.91	3,070.90	2,934.88
Grade 9	2,878.17	3,042.96	3,063.07	3,020.58	3,112.21	3,058.32	3,010.24	3,006.15	3,223.27	3,247.39	3,239.80	3,202.80	3,214.58	3,211.55
Grade 10	2,648.11	3,053.44	3,011.12	3,052.54	2,994.00	3,084.36	3,030.82	2,977.69	2,973.63	3,188.20	3,212.33	3,204.90	3,168.37	3,180.01
Grade 11	2,429.24	2,745.77	2,936.63	2,867.51	2,883.04	2,828.89	2,912.92	2,860.24	2,810.63	2,806.81	3,007.50	3,032.96	3,026.91	2,993.33
Grade 12	2,106.39	2,286.55	2,292.45	2,597.04	2,499.10	2,515.50	2,471.08	2,557.33	2,513.32	2,471.92	2,470.77	2,649.78	2,674.59	2,671.62
PreK-Grade 12	33,084.61	34,948.74	35,783.45	36,270.92	36,333.32	36,393.98	36,485.71	36,713.63	36,883.11	37,089.41	37,346.63	37,594.82	37,668.74	37,723.23
<b>Grade Level Summary</b>														
PreK-Grade 5	14,984.74	15,424.41	16,009.34	16,222.32	16,419.45	16,314.62	16,243.78	16,267.54	16,327.82	16,361.91	16,421.03	16,627.58	16,788.49	16,869.35
Grades 6-8	8,097.96	8,395.61	8,470.84	8,510.93	8,425.52	8,592.29	8,816.87	9,044.68	9,034.44	9,013.18	8,995.20	8,976.80	8,795.80	8,796.37
Grades 9-12	10,001.91	11,128.72	11,303.27	11,537.67	11,488.35	11,487.07	11,425.06	11,401.41	11,520.85	11,714.32	11,930.40	12,090.44	12,084.45	12,056.51
PreK-Grade 12	33,084.61	34,948.74	35,783.45	36,270.92	36,333.32	36,393.98	36,485.71	36,713.63	36,883.11	37,089.41	37,346.63	37,594.82	37,668.74	37,723.23
<b>COFTE Growth Summary**</b>														
PreK-Grade 5				212.98	197.13	-	-	-	13.20	34.09	59.12	206.55	160.91	80.86
Grades 6-8				40.09	-	81.36	224.58	227.81	-	-	-	-	-	-
Grades 9-12				234.40	-	-	-	-	33.78	193.47	216.08	160.04	-	-
PreK-Grade 12				487.47	197.13	81.36	224.58	227.81	46.98	227.56	275.20	366.59	160.91	80.86

\* Birth data are lagged for kindergarten entrance. Births shown for 2020-21 are the birth data for the students who will enter kindergarten in 2020-21. The typical student who entered kindergarten in 2020-21 was born between September 1, 2014, and August 31, 2015.

### Methodology

#### *Cohort-Survival Method*

\*\* COFTE growth is the difference between the current year and the highest of the three previous years. Negative differences are shown as -.

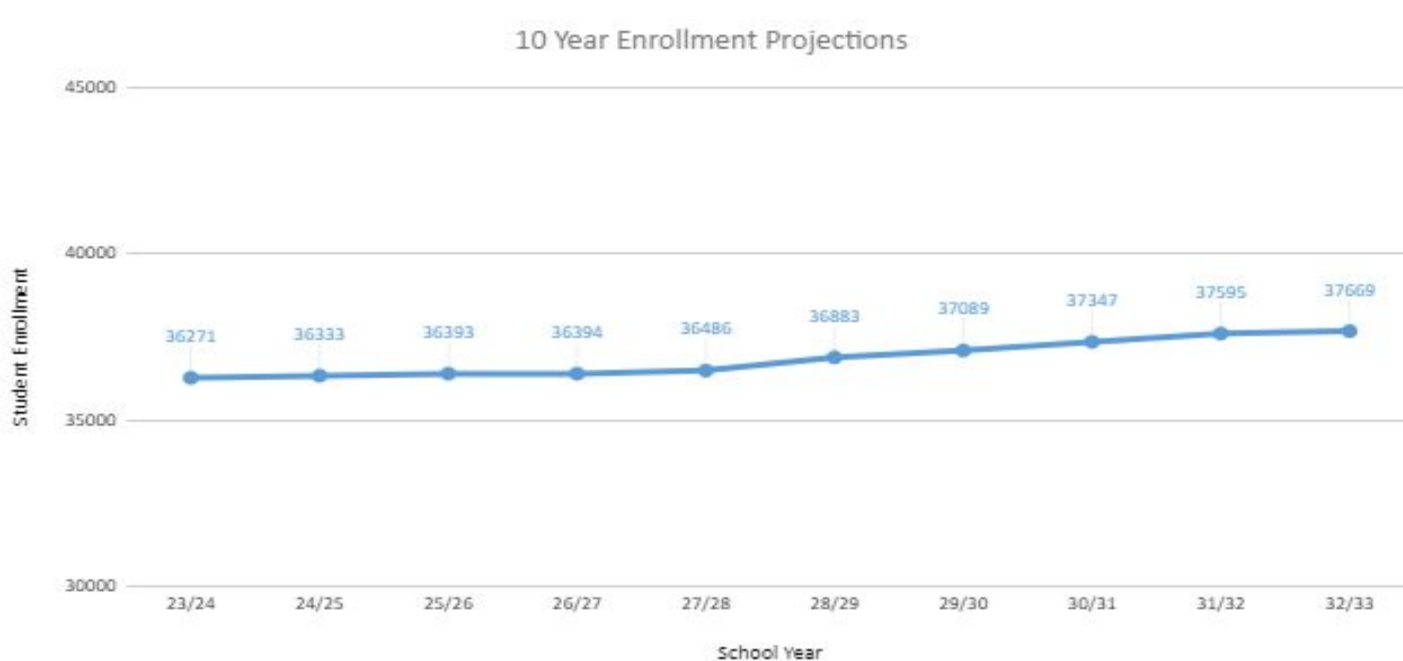
(Uses recent historical data and birth rates to predict near future)



# COFTE 10 Year Enrollment Projections

## FDOE EEC **without** Growth

11/15/2024 1:24:24 PM



3.8% Increase

### Methodology

*Cohort-Survival Method*  
(Uses recent historical data and birth rates to predict near future)

**Growth not considered**

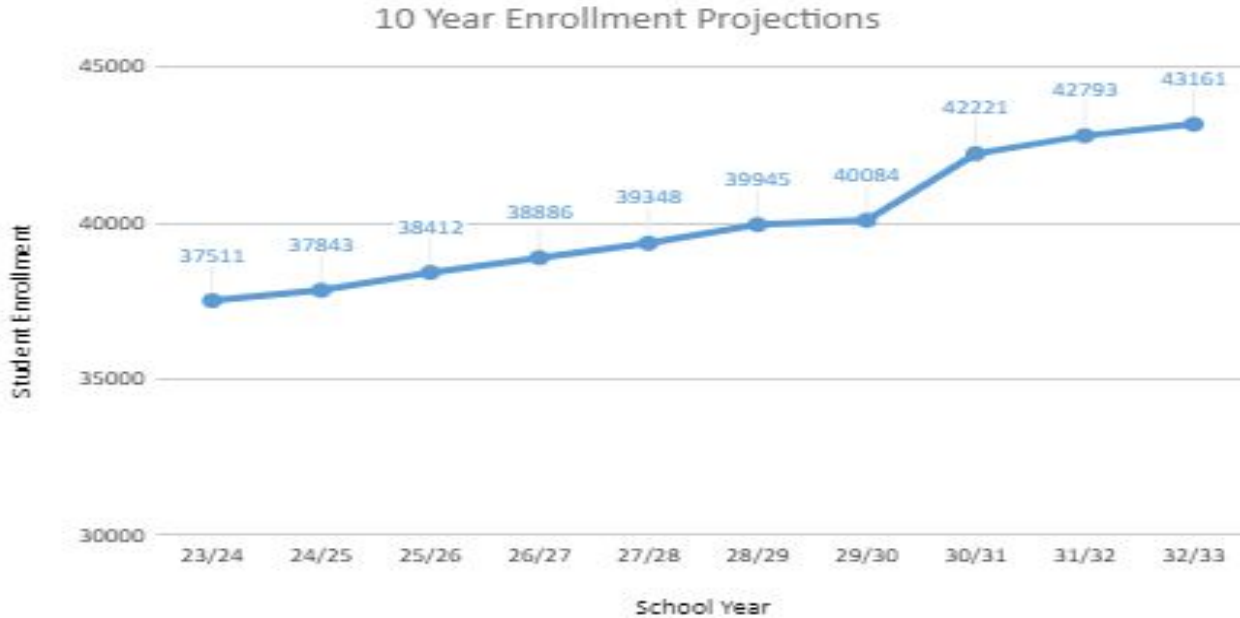




# COFTE 10 Year Enrollment Projections

## FDOE EEC **with** Growth

11/15/2024 1:24:24 PM



15.1% Increase

### Methodology

*Cohort-Survival Method +  
Growth Predictions*  
(Uses recent historical data,  
growth and birth rates to  
predict near future)



Table 1.7 - Student Capacity For SY 2023/24 Thru SY 2027/28 (Based on DOE 6/2023 COFTE)

School Code	SCHOOL NAME	Total FISH Capacity	Core (Cafeteria + multipurpose area)	SY 23/24		SY 24/25		SY 25/26		SY 26/27		SY 27/28	
				COFTE Enroll.	Utilization	COFTE Enroll.	Utilization	COFTE Enroll.	Utilization	COFTE Enroll.	Utilization	COFTE Enroll.	Utilization

**Elementary School 2023-2027**

AES	Argyle Elementary	825	1352	810	98%	824	100%	848	103%	868	105%	881	107%
CEB	Charles E. Bennett Elementary	830	804	616	77%	622	77%	626	78%	624	78%	655	81%
COE	Coppergate Elementary	725	1320	603	83%	612	84%	622	86%	631	87%	647	89%
CHE	Clay Hill Elementary	474	770	469	99%	474	100%	477	101%	475	100%	476	100%
DIS	Doctor's Inlet Elementary	737	735	553	75%	558	76%	561	76%	560	76%	560	76%
DOE	Discovery Oaks Elementary	862	1320	944	110%	955	111%	960	111%	958	111%	959	111%
FIE	Fleming Island Elementary	912	1485	734	81%	742	81%	746	82%	744	82%	745	82%
GPE	Grove Park Elementary	512	925	449	89%	454	89%	456	89%	455	89%	456	89%
KHE	Keystone Heights Elementary	896	823	828	101%	837	102%	841	102%	839	102%	842	102%
LAE	Lake Asbury Elementary	970	1084	862	89%	904	93%	995	103%	1107	114%	1188	122%
LES	Lakeside Elementary	876	888	813	93%	822	94%	826	94%	823	94%	824	94%
MRE	McRae Elementary	550	1485	548	100%	554	101%	557	101%	555	101%	556	101%
MBE	Middleburg Elementary	650	1279	567	87%	580	89%	601	92%	621	96%	634	98%
MCE	Montclair Elementary	649	781	405	62%	409	63%	411	63%	410	63%	411	63%
OPE	Orange Park Elementary	504	565	490	97%	495	98%	497	99%	496	98%	496	98%
OVE	Oakleaf Village Elementary	1097	1362	1021	93%	1036	94%	1048	96%	1045	95%	1046	95%
PES	R.M. Paterson Elementary	1105	1336	684	62%	691	63%	695	63%	693	63%	693	63%
POE	Plantation Oaks Elementary	992	1362	932	94%	942	95%	947	95%	944	95%	945	95%
ROE	RideOut Elementary	683	1320	615	90%	632	92%	659	96%	681	100%	703	103%
RVE	Ridgeview Elementary	547	776	583	107%	589	108%	592	108%	590	108%	591	108%
SBJ	S. Bryan Jennings Elementary	676	1086	511	76%	516	76%	519	77%	518	77%	518	77%
SLE	Shadowlawn Elementary	863	1362	720	83%	732	85%	746	86%	743	86%	756	88%
SPC	Swimming Pen Creek Elementary	547	1352	510	93%	515	94%	518	95%	516	94%	517	95%
SPS	Spring Park Elementary	851	1362	552	65%	564	66%	567	67%	565	66%	603	71%
TBE	Thunderbolt Elementary	1110	1353	827	74%	836	75%	840	76%	837	75%	838	76%
TES	Tynes Elementary	1004	1366	1007	100%	1092	109%	1166	116%	1241	124%	1242	124%
WEC	W.E. Cherry Elementary	881	855	661	77%	668	78%	672	79%	670	78%	671	78%
WES	Wilkinson Elementary	788	1372	706	90%	713	91%	717	91%	715	91%	716	91%
<b>Total:</b>		<b>22116</b>	<b>31880</b>	<b>19019</b>	<b>86%</b>	<b>19370</b>	<b>88%</b>	<b>19711</b>	<b>89%</b>	<b>19924</b>	<b>90%</b>	<b>20168</b>	<b>91%</b>

**Junior High School 2023-2027**

GCJ	Green Cove Springs Junior High	922	1750	881	96%	859	93%	853	93%	885	96%	894	97%
LAJ	Lake Asbury Junior High	1334	1747	929	70%	956	72%	1002	75%	1052	79%	1094	82%
LJH	Lakeside Junior High	1204	1263	932	77%	918	76%	911	76%	945	79%	1013	84%
OLJ	Oakleaf Junior High	1474	1568	968	66%	946	64%	937	64%	971	66%	1010	69%
OPJ	Orange Park Junior High	1053	1262	871	83%	853	81%	850	81%	866	82%	870	83%
WJH	Wilkinson Junior High	752	1108	870	116%	859	114%	863	115%	886	118%	887	118%
<b>Total:</b>		<b>6739</b>	<b>8698</b>	<b>5452</b>	<b>81%</b>	<b>5390</b>	<b>80%</b>	<b>5416</b>	<b>80%</b>	<b>5606</b>	<b>83%</b>	<b>5768</b>	<b>86%</b>

**High School 2023-2027**

CHS	Clay High	1892	2179	1780	94%	1842	97%	1938	102%	2017	107%	2094	111%
FIH	Fleming Island High	2375	2485	1852	78%	1844	78%	1844	78%	1834	77%	1830	77%
MHS	Middleburg High*	2383	1637	1871	114%	1883	115%	1915	117%	1927	118%	1923	117%
OPH	Orange Park High	2343	2818	2018	86%	2017	86%	2034	87%	2028	87%	2022	86%
RHS	Ridgeview High	2254	2299	1829	81%	1821	81%	1821	81%	1811	80%	1806	80%
OLH	Oakleaf High	2459	2845	2318	94%	2315	94%	2375	97%	2371	96%	2366	96%
<b>Total:</b>		<b>13706</b>	<b>14263</b>	<b>11668</b>	<b>85%</b>	<b>11721</b>	<b>86%</b>	<b>11926</b>	<b>87%</b>	<b>11987</b>	<b>87%</b>	<b>12041</b>	<b>88%</b>

\*Does not reflect new cafeteria capacity currently under construction

**Combination / Other 2023-2027**

BLC	Bannerman Learning Center	568	332	190	57%	189	57%	189	57%	190	57%	192	58%
KHS	Keystone Heights High (7-12)	1377	2247	1181	86%	1172	85%	1169	85%	1179	86%	1179	86%
<b>Total:</b>		<b>1945</b>	<b>2579</b>	<b>1371</b>	<b>71%</b>	<b>1361</b>	<b>70%</b>	<b>1358</b>	<b>70%</b>	<b>1370</b>	<b>70%</b>	<b>1371</b>	<b>70%</b>

<b>Grand Total:</b>	<b>44506</b>	<b>57420</b>	<b>37511</b>	<b>84%</b>	<b>37843</b>	<b>85%</b>	<b>38412</b>	<b>86%</b>	<b>38886</b>	<b>87%</b>	<b>39348</b>	<b>88%</b>
---------------------	--------------	--------------	--------------	------------	--------------	------------	--------------	------------	--------------	------------	--------------	------------



Table 1.7 Cont. - Student Capacity For SY 2028/29 Thru SY 2032/33 (Based on DOE 6/2023 COFFE)

School Code	SCHOOL NAME	Total FISH Capacity	Core (Cafeteria + Multipurpose area)	SY 28/29		SY 29/30		SY 30/31		SY 31/32		SY 32/33	
				COFFE Enroll.	Utilization	COFFE Enroll.	Utilization	COFFE enroll.	Utilization	COFFE Enroll.	Utilization	COFFE Enroll.	Utilization
<b>Elementary School 2028-2032</b>													
AES	Argyle Elementary	825	1352	893	108%	896	109%	898	109%	902	109%	912	111%
CEB	Charles E. Bennett Elementary	830	804	712	88%	769	96%	772	96%	775	96%	783	97%
CGE	Coppergate Elementary	725	1320	648	89%	664	92%	680	94%	696	96%	713	98%
CHE	Clay Hill Elementary	474	770	477	101%	478	101%	479	101%	481	102%	486	103%
DJS	Doctor's Inlet Elementary	737	735	561	76%	563	77%	564	77%	566	77%	573	78%
DOE	Discovery Oaks Elementary	862	1320	960	111%	963	112%	966	112%	969	112%	980	112%
FIE	Fleming Island Elementary	912	1485	746	82%	748	82%	750	82%	753	83%	761	83%
GPPE	Grove Park Elementary	512	925	456	89%	457	89%	459	90%	461	90%	466	91%
KHE	Keystone Heights Elementary	896	823	846	103%	849	103%	852	103%	855	104%	858	104%
LAE	Lake Asbury Elementary	970	1084	1304	134%	1397	144%	1487	153%	1577	163%	1667	172%
LES	Lakeside Elementary	876	888	826	94%	828	94%	830	95%	833	95%	843	96%
MRE	McRae Elementary	550	1485	557	101%	558	101%	560	102%	562	102%	568	103%
MBE	Middleburg Elementary	650	1279	647	100%	650	102%	673	104%	686	105%	699	108%
MCE	Montclair Elementary	649	781	411	63%	412	64%	414	64%	415	64%	420	65%
OPE	Orange Park Elementary	504	565	497	99%	498	99%	500	99%	502	100%	507	101%
OVE	Oakleaf Village Elementary	1097	1362	1048	96%	1050	96%	1054	96%	1058	96%	1069	97%
PES	R.M. Paterson Elementary	1105	1336	694	63%	696	63%	698	63%	701	63%	709	64%
POE	Plantation Oaks Elementary	992	1362	947	95%	949	96%	952	96%	956	96%	966	97%
ROE	RideOut Elementary	683	1320	710	104%	717	105%	724	106%	731	107%	738	108%
RVE	Ridgeview Elementary	547	776	592	108%	593	108%	595	109%	597	109%	604	110%
SBJ	S. Bryan Jennings Elementary	676	1086	519	77%	520	77%	522	77%	524	77%	530	78%
SLE	Shadowlawn Elementary	863	1362	782	91%	808	94%	834	97%	860	100%	886	103%
SPC	Swimming Pen Creek Elementary	547	1352	518	95%	519	95%	521	95%	523	96%	528	97%
SPS	Spring Park Elementary	851	1362	641	75%	679	80%	717	84%	755	89%	791	93%
TBE	Thunderbolt Elementary	1110	1353	840	76%	842	76%	844	76%	848	76%	857	77%
TES	Tynes Elementary	1004	1366	1244	124%	1247	124%	1251	125%	1256	125%	1270	126%
WEC	W.E. Chery Elementary	891	855	672	79%	673	79%	675	79%	678	79%	685	80%
WES	Wilkinson Elementary	788	1372	717	91%	719	91%	721	91%	724	92%	732	93%
<b>Total:</b>		<b>22116</b>	<b>31880</b>	<b>20463</b>	<b>93%</b>	<b>20754</b>	<b>94%</b>	<b>20992</b>	<b>95%</b>	<b>21242</b>	<b>96%</b>	<b>21602</b>	<b>98%</b>
<b>Junior High School 2028-2032</b>													
GCJ	Green Cove Springs Junior High	922	1750	911	99%	918	100%	929	101%	946	103%	921	100%
LAJ	Lake Asbury Junior High	1334	1747	1161	87%	1268	94%	1309	98%	1368	103%	1367	102%
LJH	Lakeside Junior High	1204	1263	1016	84%	1010	84%	1007	84%	1009	84%	987	82%
OLJ	Oakleaf Junior High	1474	1568	1013	69%	1007	69%	1004	68%	1005	68%	984	67%
OPJ	Orange Park Junior High	1053	1262	874	83%	869	82%	866	82%	868	82%	849	81%
WJH	Wilkinson Junior High	752	1108	888	118%	879	117%	874	116%	877	117%	840	112%
<b>Total:</b>		<b>6739</b>	<b>8698</b>	<b>5863</b>	<b>87%</b>	<b>5940</b>	<b>88%</b>	<b>5989</b>	<b>89%</b>	<b>6075</b>	<b>90%</b>	<b>5948</b>	<b>88%</b>
<b>High School 2028-2032</b>													
CHS	Clay High	1892	2179	2244	118%	1892	100%	1924	102%	1956	103%	1986	105%
FHS	Fleming Island High	2375	2485	1849	78%	1880	79%	1915	81%	1941	82%	1940	82%
MHS	Middleburg High*	2383	1637	1929	118%	1935	118%	1949	118%	1963	120%	1975	121%
OPH	Orange Park High	2343	2818	2029	87%	2063	88%	2101	90%	2129	91%	2128	91%
RHS	Ridgeview High	2254	2299	1825	81%	1832	81%	1839	82%	1852	82%	1857	82%
OLH	Oakleaf High School	2459	2845	2373	96%	2412	98%	2457	100%	2490	101%	2489	101%
RRR	RRR	2500	2845					1679	67%	1767	71%	1861	74%
<b>Total:</b>		<b>16206</b>	<b>17108</b>	<b>12248</b>	<b>76%</b>	<b>12015</b>	<b>74%</b>	<b>13864</b>	<b>86%</b>	<b>14097</b>	<b>87%</b>	<b>14235</b>	<b>88%</b>
*Does not reflect new cafeteria capacity currently under construction													
<b>Combination / Other 2028-2032</b>													
BLC	Bannerman Learning Center	568	332	192	58%	195	59%	195	59%	197	59%	198	60%
KHS	Keystone Heights High (7-12)	1377	2130	1179	86%	1181	86%	1181	86%	1182	86%	1170	86%
BB	BB (K-6)	1275	1900							800	63%	882	69%
<b>Total:</b>		<b>1846</b>	<b>2462</b>	<b>1371</b>	<b>70%</b>	<b>1376</b>	<b>71%</b>	<b>1376</b>	<b>71%</b>	<b>1379</b>	<b>71%</b>	<b>1377</b>	<b>71%</b>
<b>Grand Total:</b>		<b>47006</b>	<b>60148</b>	<b>39845</b>	<b>85%</b>	<b>40084</b>	<b>85%</b>	<b>42221</b>	<b>90%</b>	<b>42793</b>	<b>91%</b>	<b>43161</b>	<b>92%</b>



# Overall Summary

## Growth in Clay County District Schools

# Projected Long Term 10-20 Year Growth Summary



Residential Area	Number of Homes
Lake Asbury	>7,000
Oakleaf/Middleburg	>4,000
Saratoga Springs	>5000
Governors Park	6,300
Other areas (GCS/KH/Fleming Island)	3000
<b>Total</b>	<b>&gt;25,000</b>

25,000 homes generates approximately:

6,190 Elementary Students

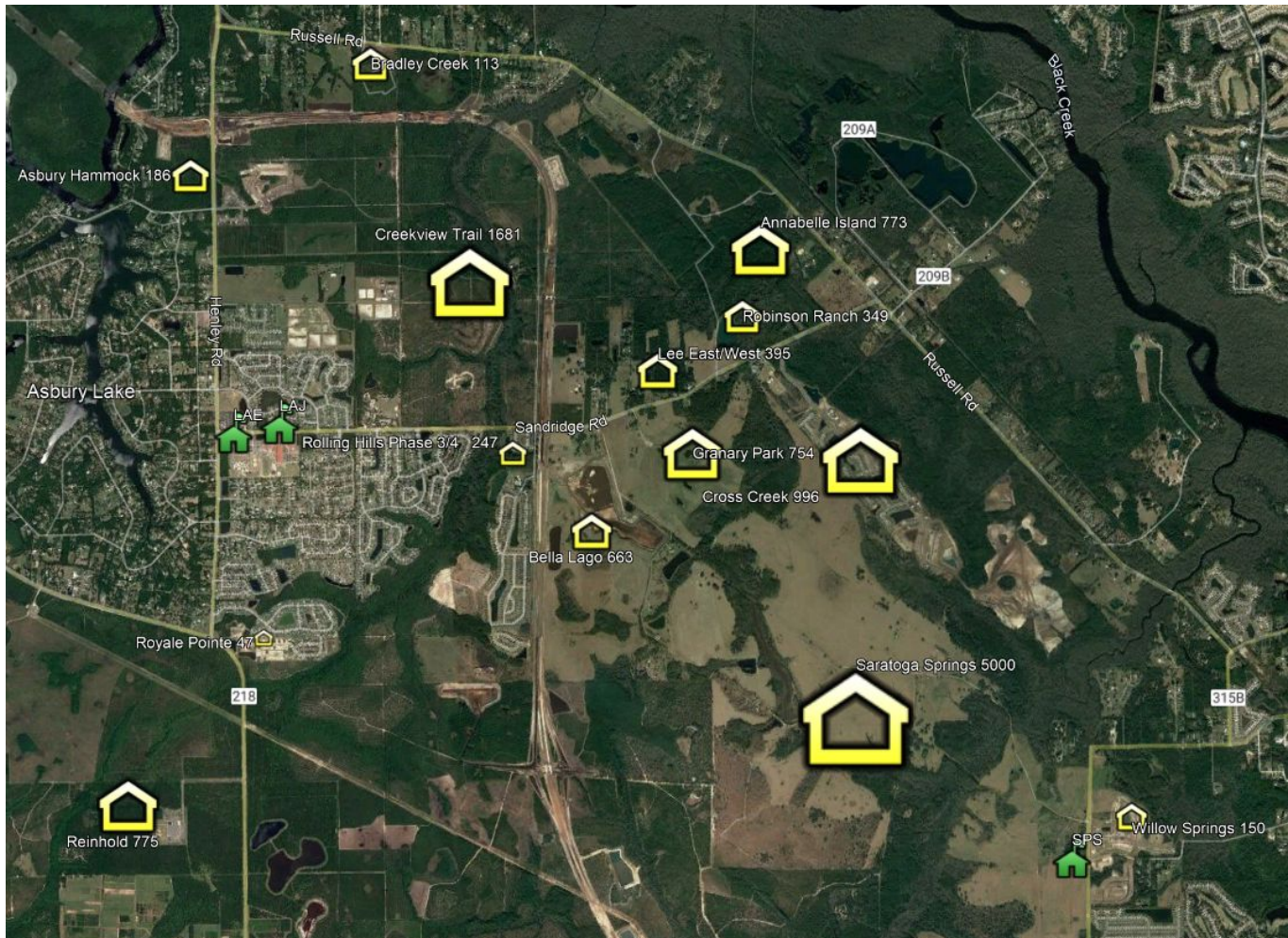
1,930 Junior High Students

3,740 High School Students

**Total Projected Students: 11,860**



# Lake Asbury Growth



School (May 2023)	% capacity
Lake Asbury ES	104.2%
Shadowlawn ES	87.3%
Lake Asbury JH	76.5%
Clay High School	83.1 %

**Lake Asbury Growth**

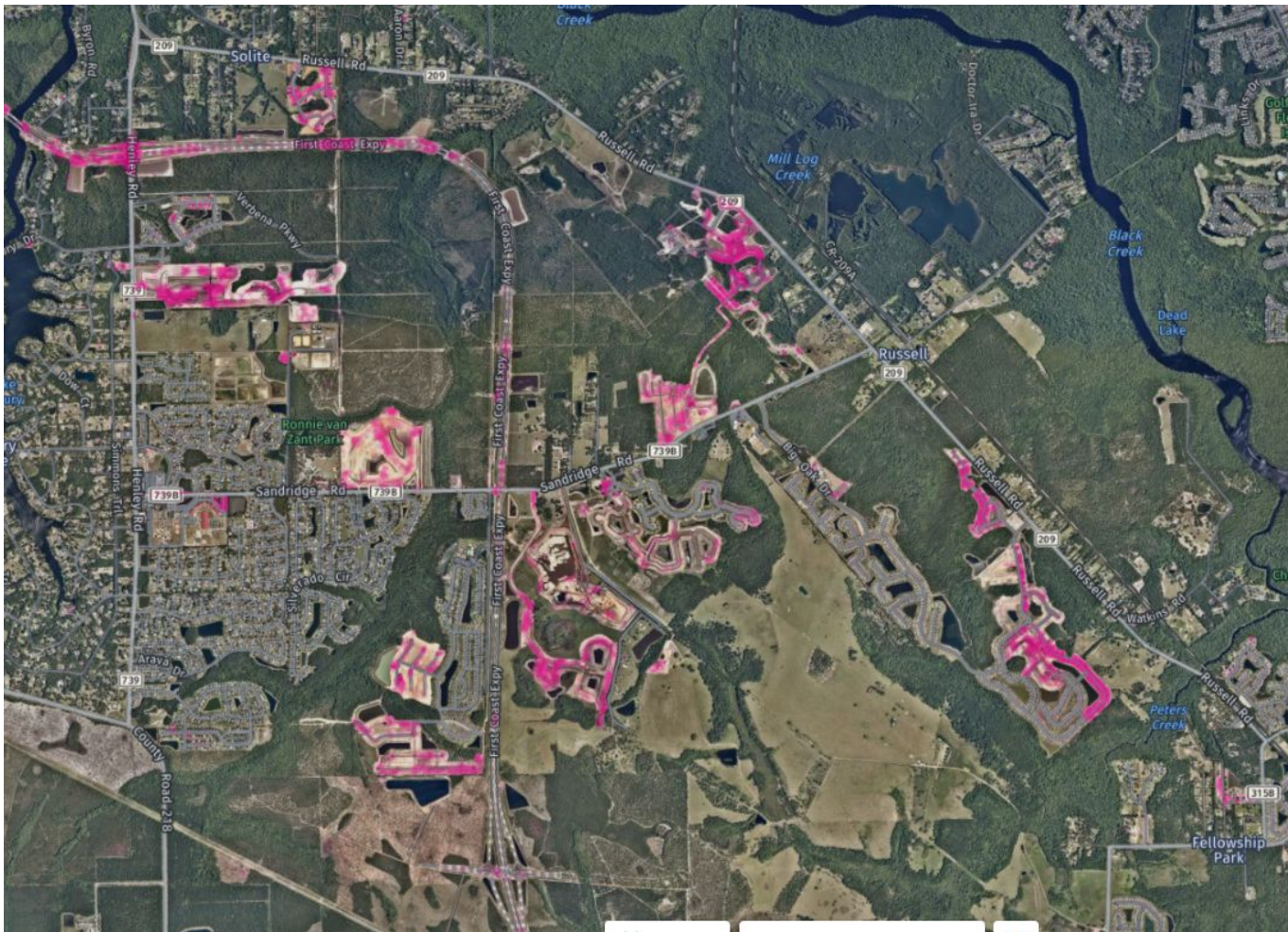
≈ 7000 potential homes

≈ 1790 elementary students  
 ≈ 570 junior high students  
 ≈ 1100 high schools students

\* Does not include Saratoga Springs



# Lake Asbury Active Construction A.I.





## Lake Asbury Growth

**\* Potential  $\approx$  7,000 homes**

**$\approx$  1,790 elementary students**

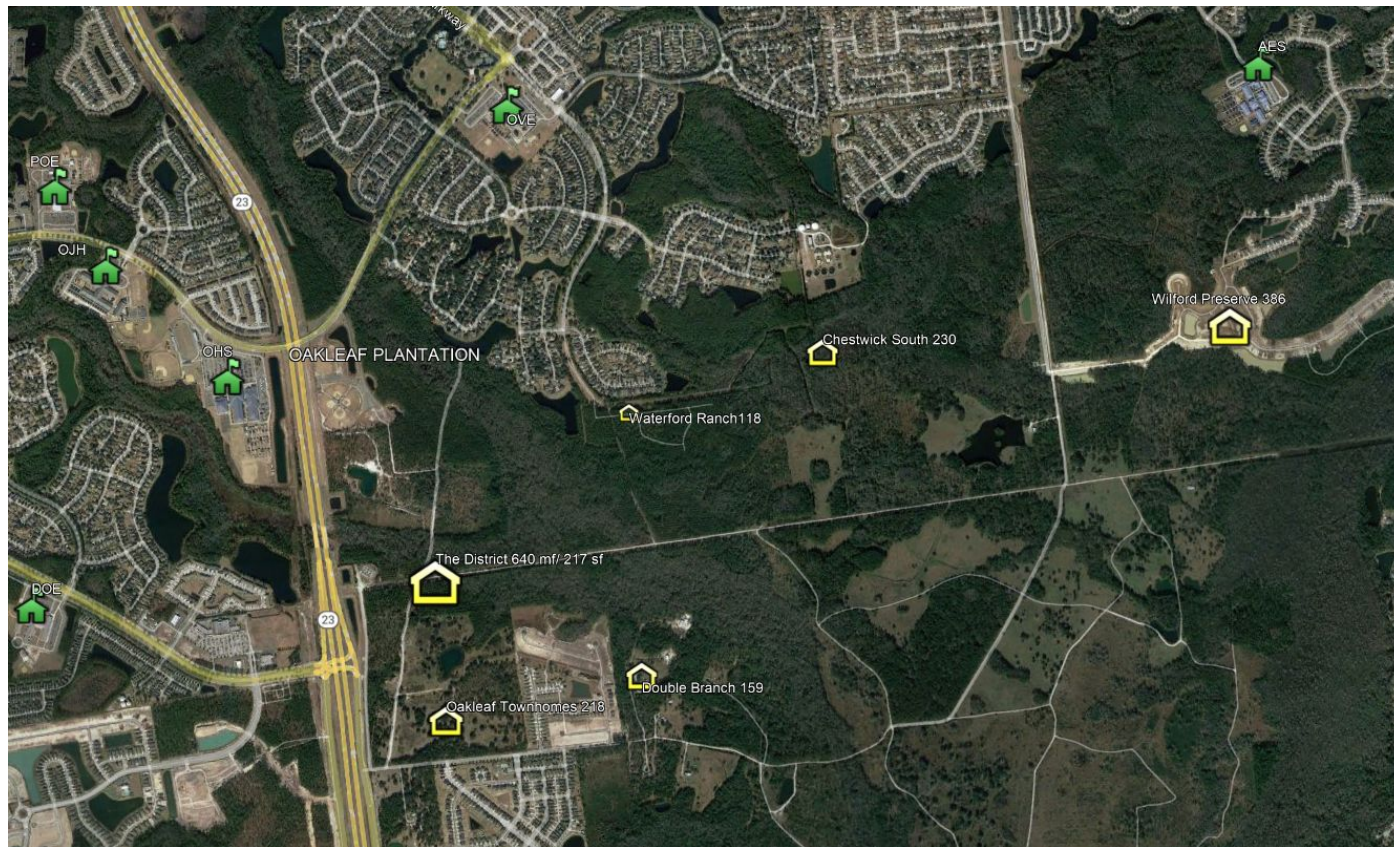
**$\approx$  570 junior high students**

**$\approx$  1,100 high school students**

**\*Total Students  $\approx$  3,460**



# Oakleaf Growth



School (May 2023)	% capacity
Oakleaf HS	94.1%
Oakleaf JH	74.8%
Discovery Oaks ES	117.5%
Oakleaf Village ES	94.5%
Plantation Oaks ES	97.4%
Argyle ES	99.2%

## Oakleaf Growth

\* Potential > 1950 homes

≈ 400 elementary students

≈ 100 junior high students

≈ 250 high school students



# Oakleaf Active Construction A.I.





## Oakleaf Growth

**\* Potential > 1,950 homes**

**≈ 400 elementary students**

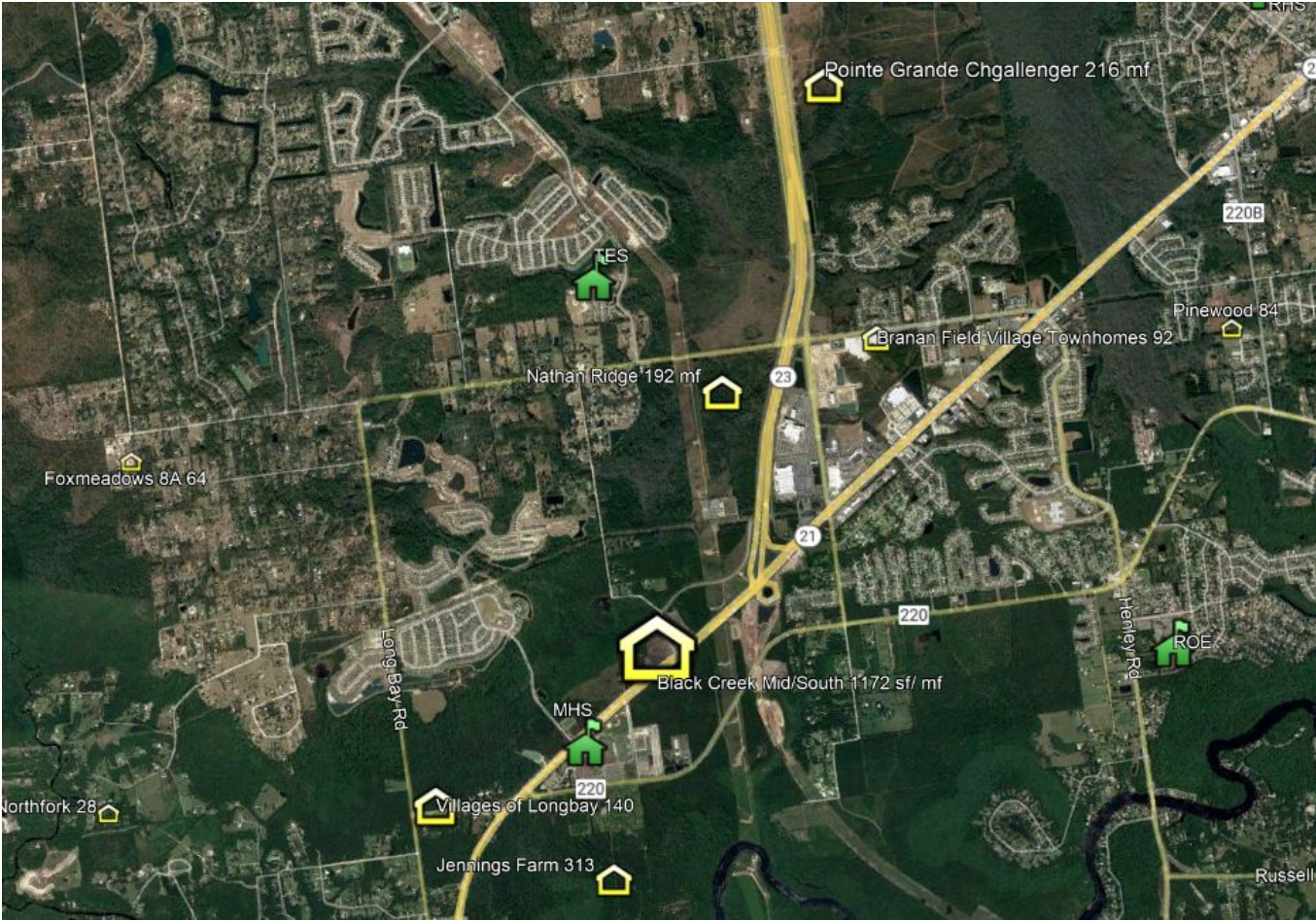
**≈ 100 junior high students**

**≈ 250 high school students**

**\*Total Students ≈ 750**



# Middleburg



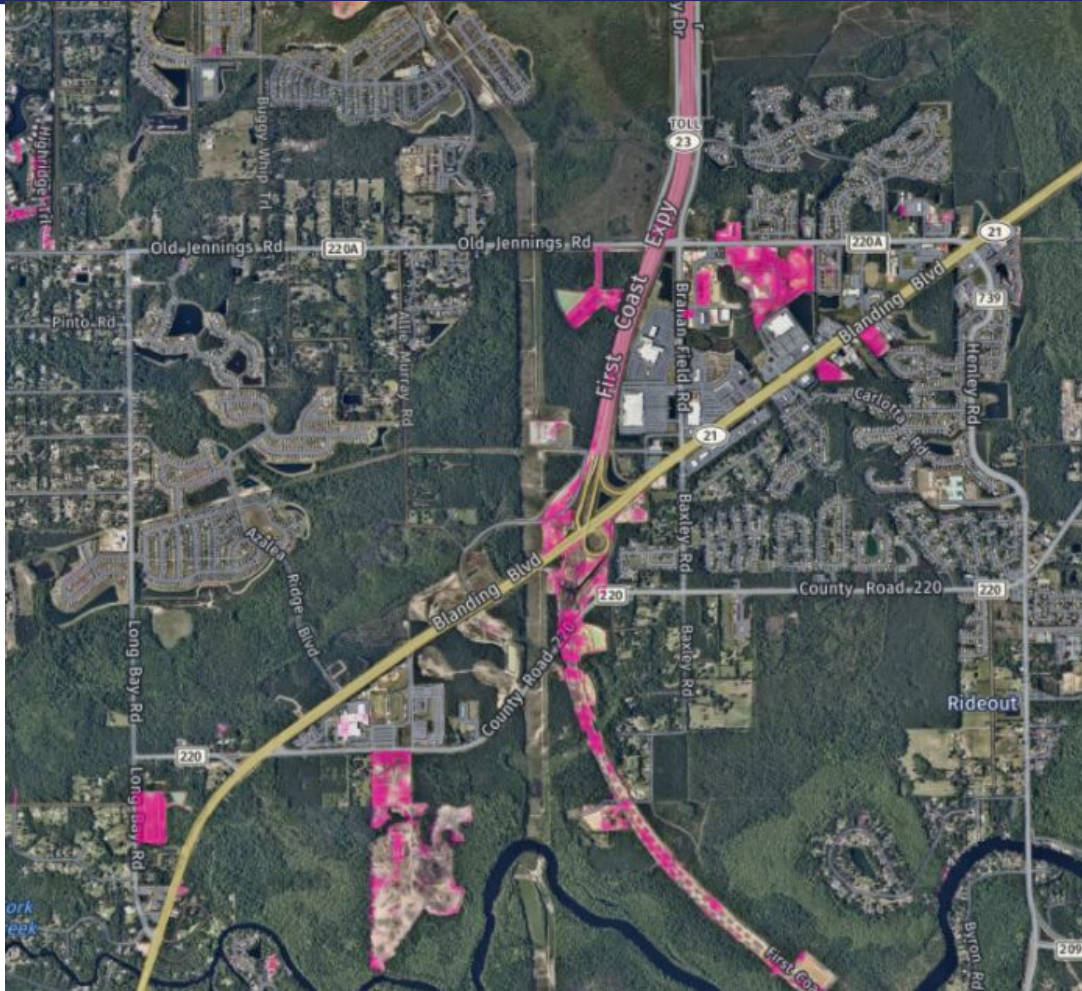
School (May 2023)	% capacity
Tyne ES	93.5%
Middleburg ES	86.9%
Middleburg HS	102.6% dining

Tynes/ Middleburg Growth

\* Potential > 2,050 homes

≈ 470 elementary students  
≈ 140 junior high students  
≈ 290 high school students

# Middleburg Active Construction A.I.







## Middleburg Growth

**\* Potential > 2,050 homes**

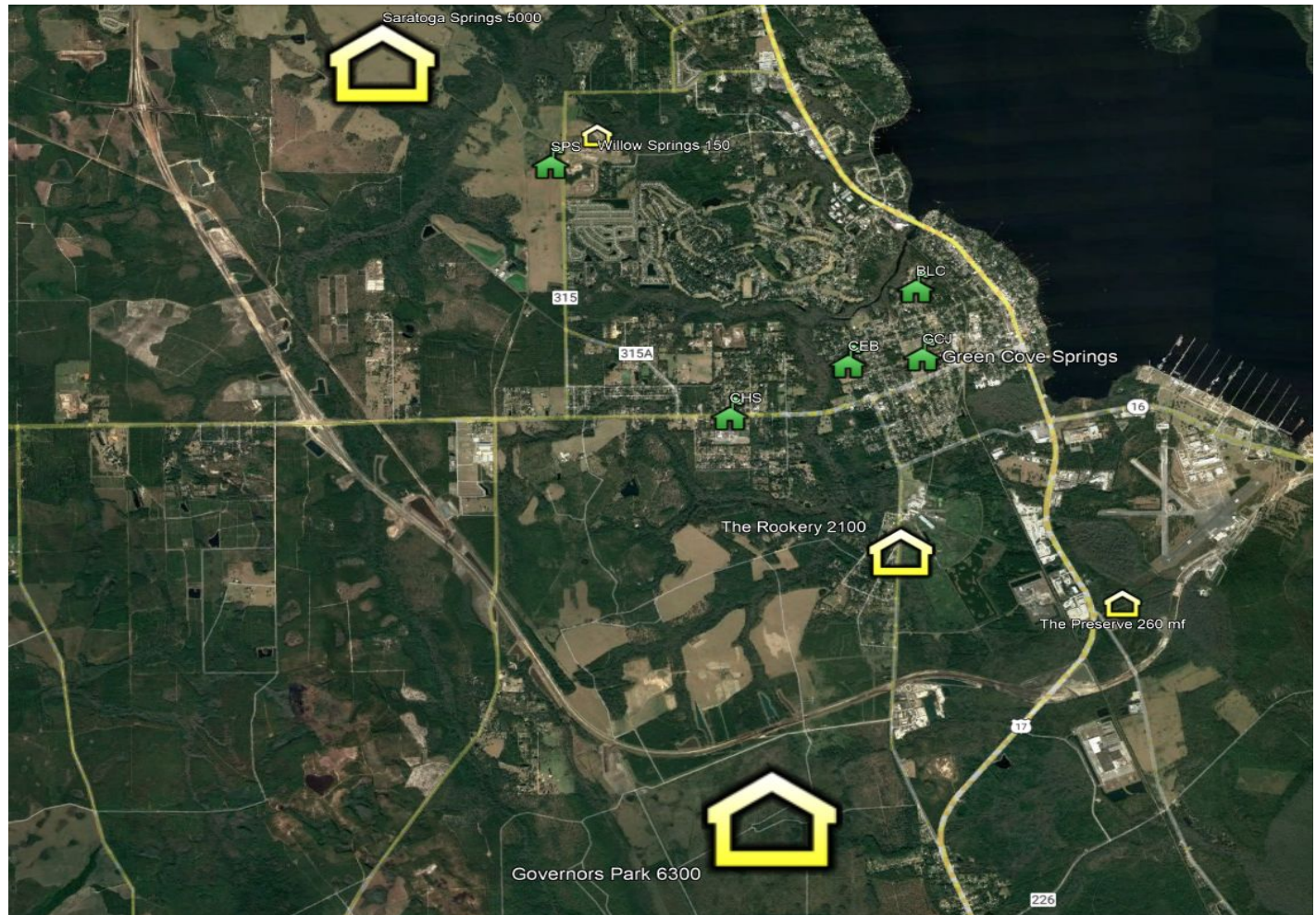
**≈ 470 elementary students**

**≈ 140 junior high students**

**≈ 290 high school students**

**\*Total Students ≈ 900**

# Green Cove Springs Growth



School (May 2023)	% Capacity
Spring Park ES	0% Project 70%
CE Bennett ES	76.9%
Green Cove JH	84.7%
Clay High School	83.1%

**GCS Growth**

≈ 13,800 potential homes

≈ 3530 elementary students

≈ 1120 junior high students

≈ 2100 high school students



## Green Cove/Saratoga/Governors Park Growth

**\* Potential > 13,800 homes**

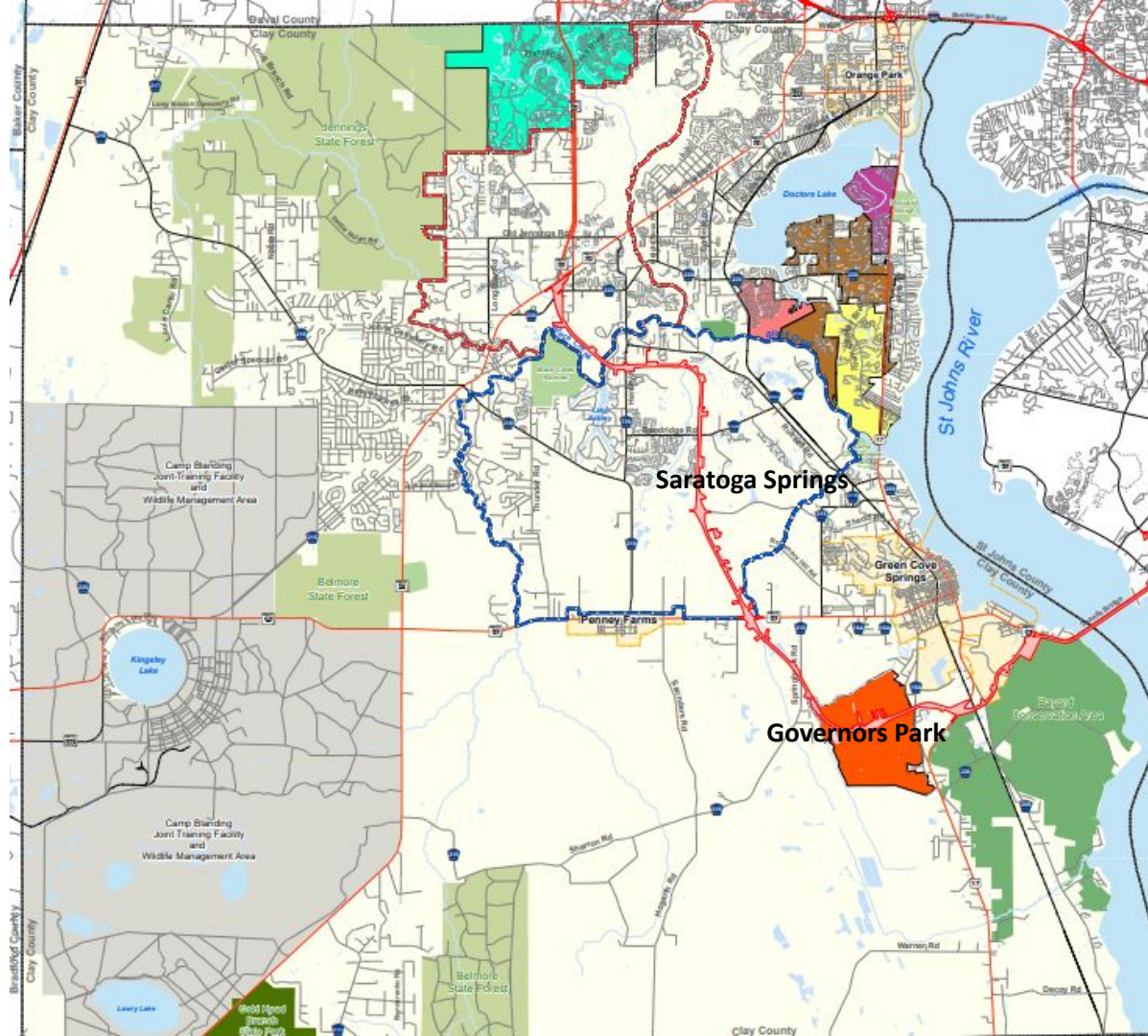
**≈ 3,530 elementary students**

**≈ 1,120 junior high students**

**≈ 2,100 high school students**

**\*Total Students ≈ 6,750**

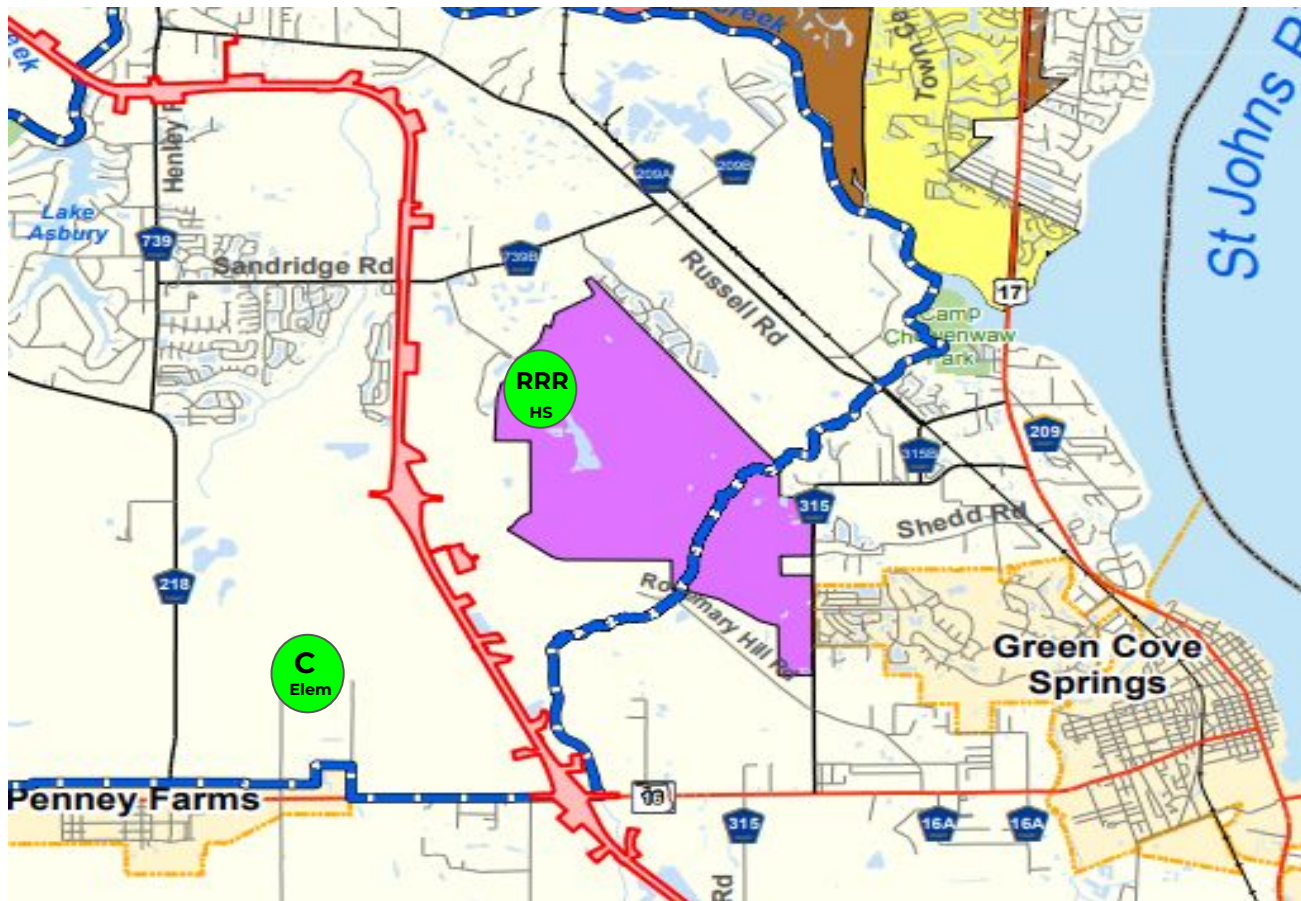




Saratoga Springs

Governors Park

# Saratoga Springs- GCS



## Saratoga Springs/GCS

School	# of Students	Projected Open
Saratoga Spgs High School	2500	*TBD
Green Cove, Lake Asbury, Saratoga Elem	1500	*TBD

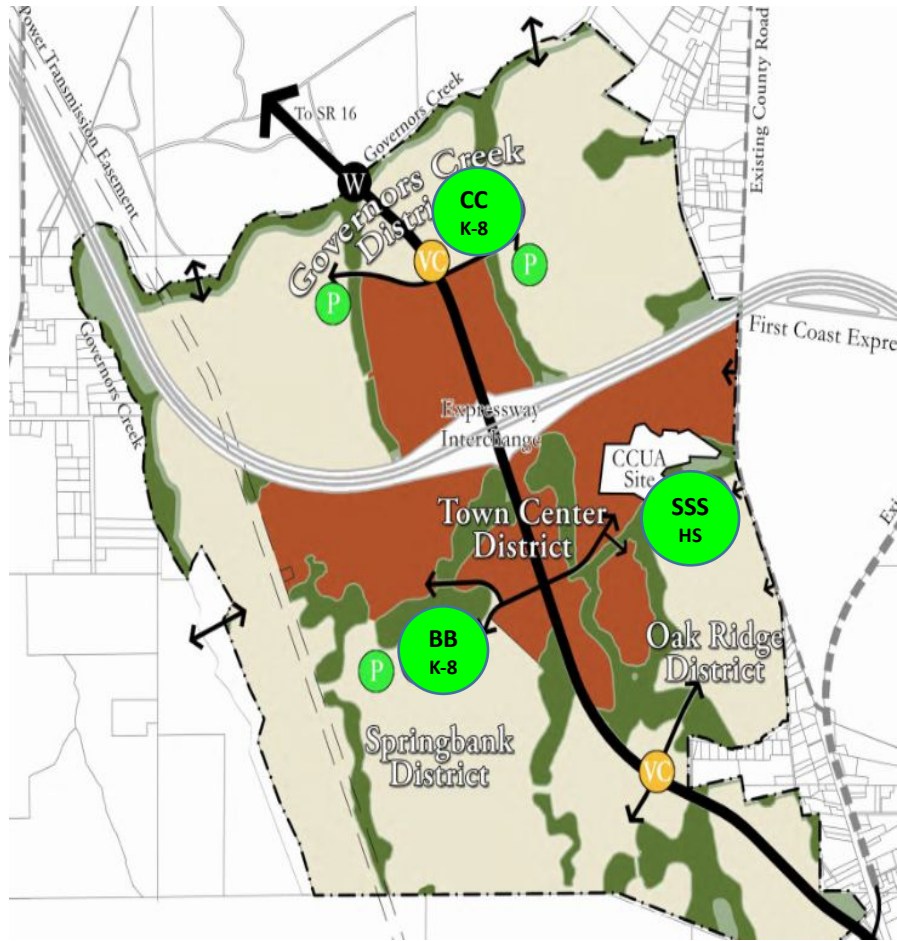
**\* Subject to change based on development. Builds are currently beyond the 10 year plan.**



# Proposed Sites for Governors Park Schools



Development to coincide with completion of New Shands bridge 2029



School	# of Students	Projected Year
Governors Park "BB" K-8	1500	*TBD
Governors Park "CC" K-8	1500	*TBD
Governors Park "SSS" High School	2500	*TBD

**\* Subject to change based on development. Builds are currently beyond the 10 year plan.**



# Projected Immediate Needs

# Proposed Growth Projects



Project Name	Opening	School Capacity	Area Impacted	Projected Cost
Oakleaf Junior Classroom Addition	2025	Adds 472 Student Stations	Oakleaf	\$20M
Lake Asbury Junior Classroom Addition	2026	Adds 432 Student Stations	Lake Asbury	\$20M
Rideout Elementary Classroom Addition	2027	Adds 144 Student Stations	Lake Asbury	\$15M
High School (Saratoga Springs)	2030	2500	Saratoga Springs	\$150M
K-8 (GCS)	2032	1500	Saratoga Springs	\$75M

\*\*Subject to change based on actual growth



Clay County District Schools  
2024-2025

**Thank You!**