

CLAY COUNTY DISTRICT SCHOOLS

Growth Management: Oakleaf and Lake Asbury

Paul Bement, Supervisor - Planning and
Intergovernmental Relations





INTRODUCTION

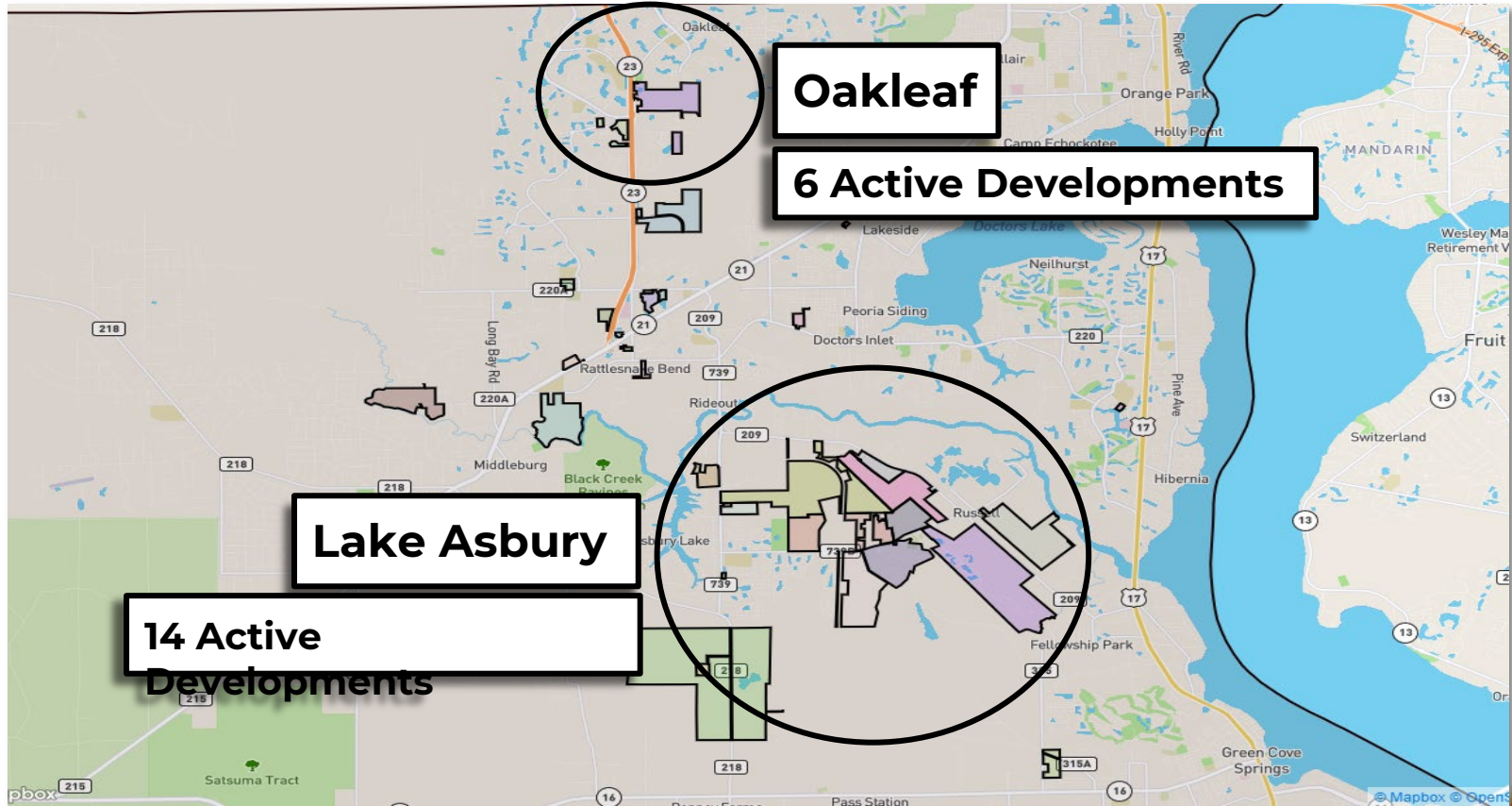
- **Bryce Ellis**
 - *Assistant Superintendent of Operations*
- **Lance Addison**
 - *Director of Facility Planning and Construction*
- **Paul Bement**
 - *Supervisor of Planning*



PRESENTATION OBJECTIVES

- **Growth and Growth Management**
- **Address / Balance School Capacities**
- **Relieve Near or Over Capacity Schools**
- **Simplify Transportation Routes**
- **Portable Reduction**
- **Fiscal Responsibility**
- **Timeline**

Challenge - Growth Management



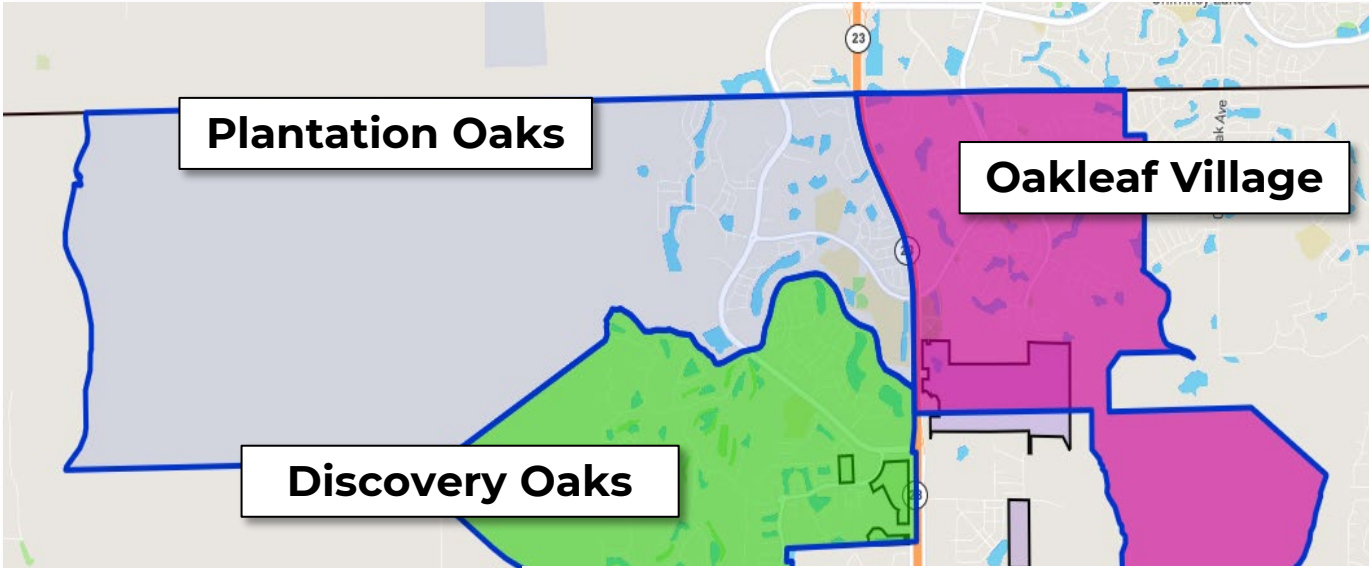
Oakleaf

6 Active Developments

Lake Asbury

14 Active Developments

Challenge: Oakleaf Junior Feeder Pattern



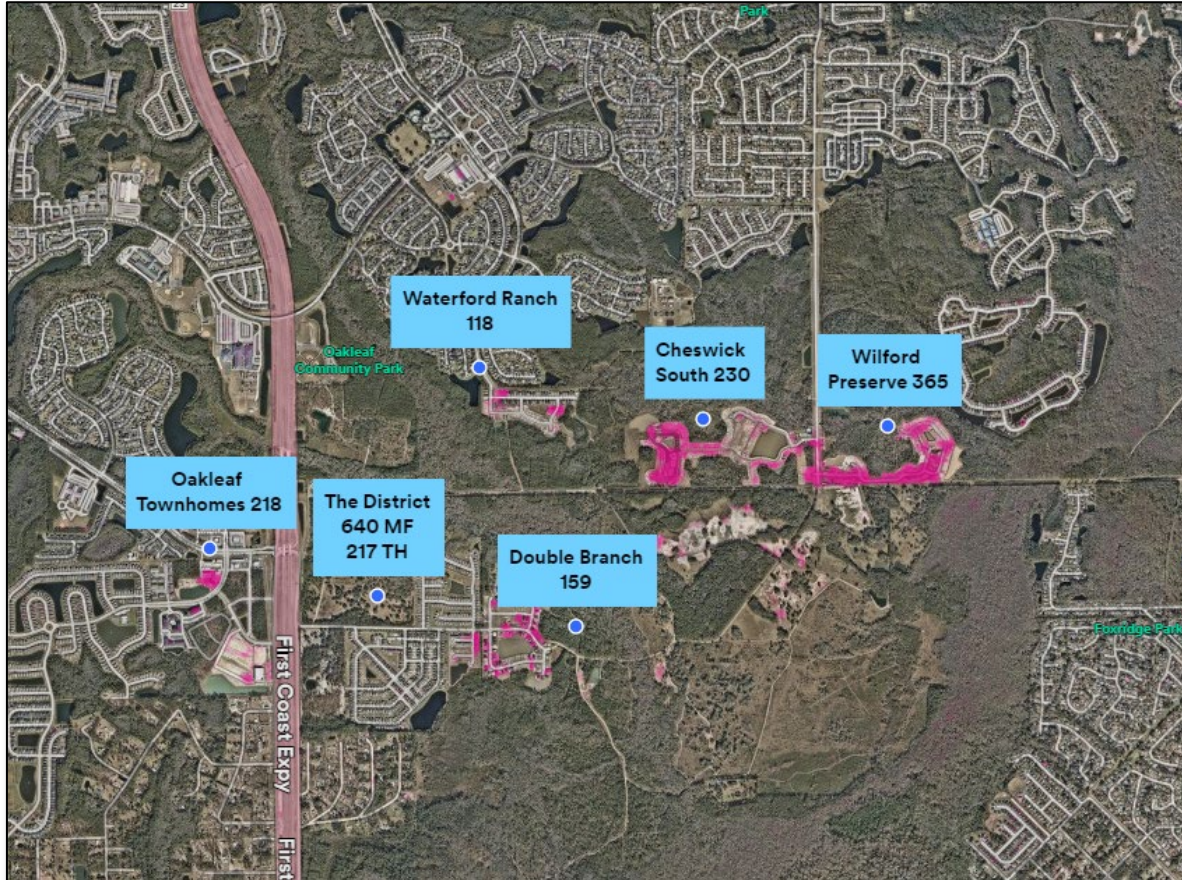
Facility Name	Enrollment	School Capacity	School Utilization	Permanent Capacity	Permanent Utilization
DISCOVERY OAKS ES	916	852	107.5%	852	107.5%
OAKLEAF VILLAGE ES	1029	1,097	93.8%	881	116.8%
PLANTATION OAKS ES	900	1,004	89.6%	887	101.5%

School Capacity = Brick & Mortar + Relocatable Classrooms

Permanent Capacity = Brick & Mortar Only

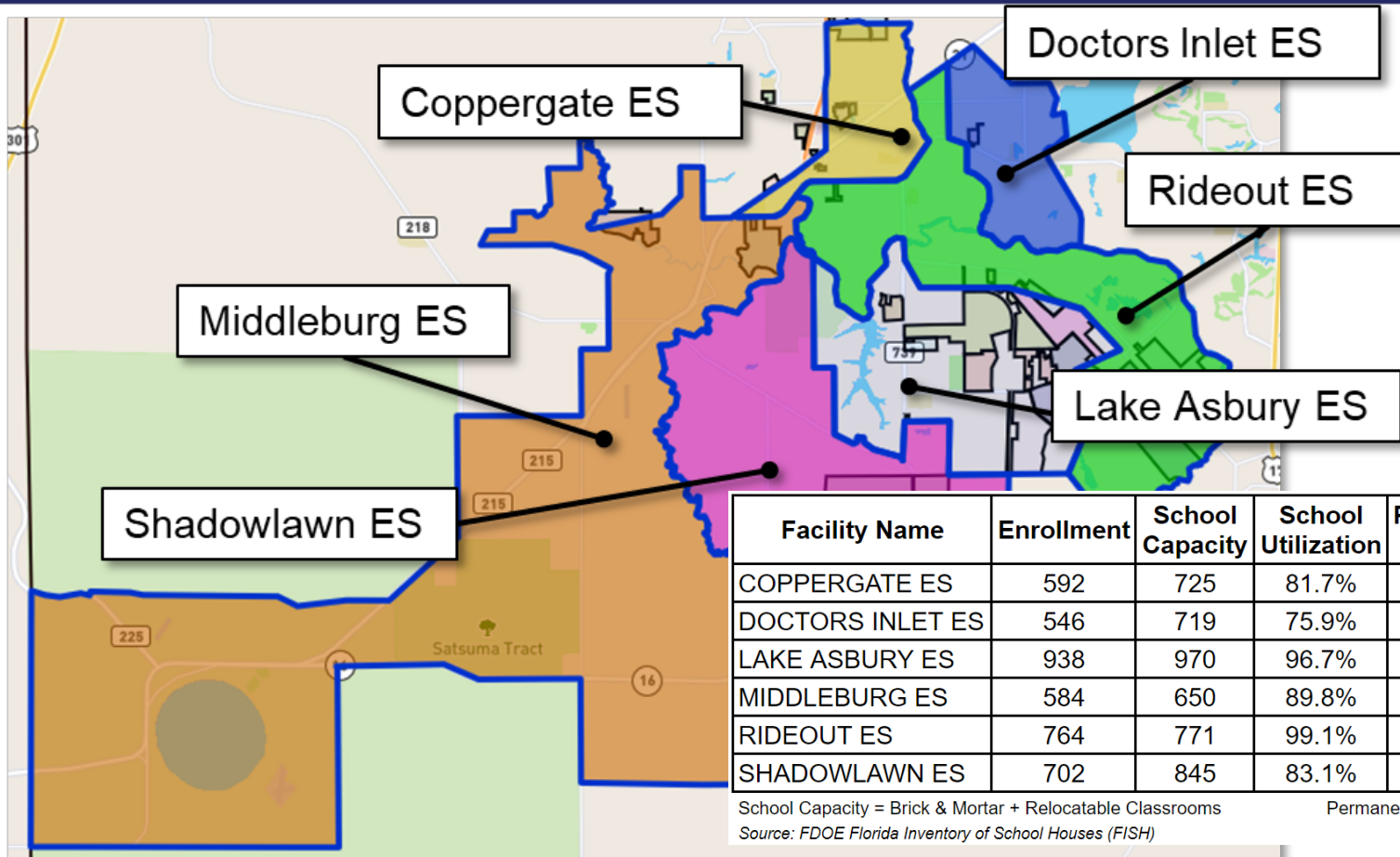
Source: FDOE Florida Inventory of School Houses (FISH)

Challenge: Oakleaf



Zone Growth Potential:
> 1,950 Homes
≈ 400 ES Students
≈ 100 JH Students

Challenge: Lake Asbury Junior Feeder Pattern

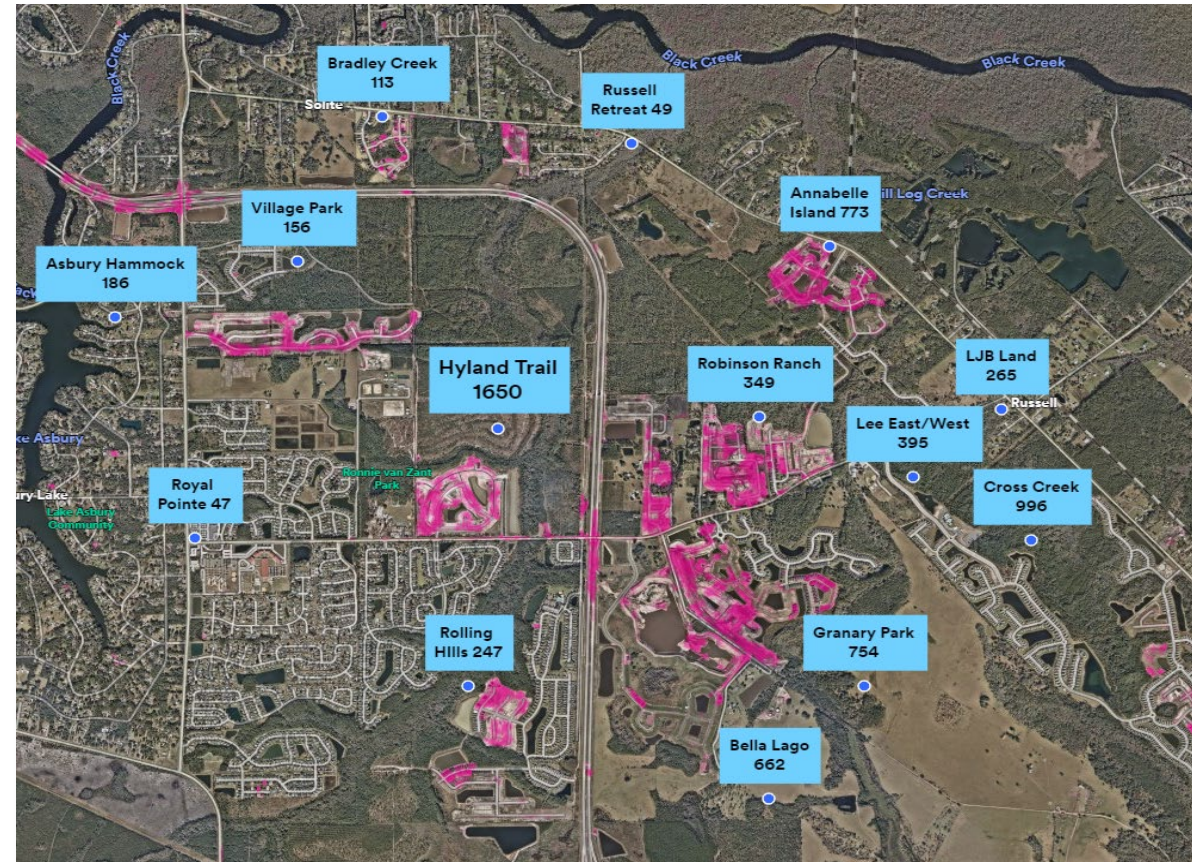


Facility Name	Enrollment	School Capacity	School Utilization	Permanent Capacity	Permanent Utilization
COPPERGATE ES	592	725	81.7%	659	89.8%
DOCTORS INLET ES	546	719	75.9%	401	136.2%
LAKE ASBURY ES	938	970	96.7%	388	241.8%
MIDDLEBURG ES	584	650	89.8%	518	112.7%
RIDEOUT ES	764	771	99.1%	628	121.7%
SHADOWLAWN ES	702	845	83.1%	845	83.1%

School Capacity = Brick & Mortar + Relocatable Classrooms
 Source: FDOE Florida Inventory of School Houses (FISH)

Permanent Capacity = Brick & Mortar Only

Challenge: Lake Asbury



Zone Growth Potential:
≈ 7,000 homes
≈ 1,790 ES students
≈ 570 JH students



How Do We:
Optimize School District Resources
While Prioritizing Community
Wellbeing?



Solution Selection Metrics

Metric Scorecard	
Addresses Growth	✓ or X
Balance/Relieve Capacity	✓ or X
Fiscally Responsible	✓ or X
Simplify Transportation	✓ or X
Reduces Portables	✓ or X

Three Options Identified...

Option A: Status Quo

Option A	
Addresses Growth	X
Relieve Capacity	X
Fiscally Responsible	X
Simplify Transportation	X
Reduces Portables	✓



Total 45

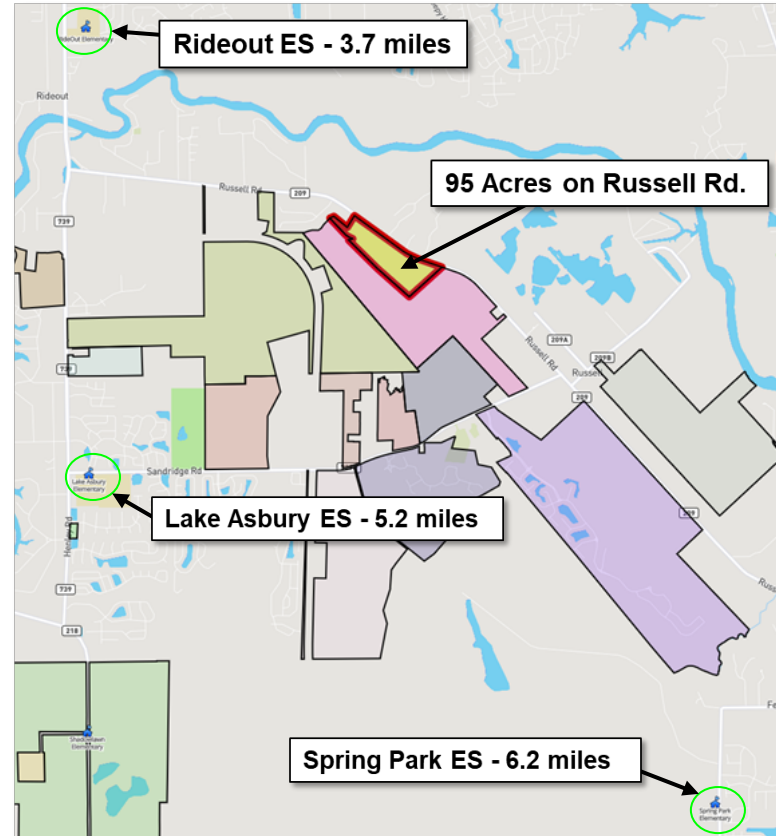
Option B: Build a New School

- Complicated & lengthy process
 - Obtain state approval
 - Land due diligence and preparation
 - Construction Timeline

- Very expensive
 - Minimum of 30 acres needed per ES
 - Minimum school size 862 student stations
 - Cost per student ~\$62k
 - Approximate school cost ~\$53M

- New schools must have at least 70% enrollment to be viable

- Additional ES Schools are in the long range plan dependant upon actual growth





Option B: Build a New School - Scorecard

Option B	
Addresses Growth	
Relieve Capacity	
Fiscally Responsible	
Simplify Transportation	
Reduces Portable	



Option C: Redistrict High-Growth Areas

- Junior high schools in the high growth areas begin providing 6th grade education.
- These schools have enough core capacity to absorb the additional students.
 - Affects 2024-2025 SY 5th Graders
 - Students would attend their respective Junior High Schools a year earlier

Elementary School	JHS
Oakleaf Zone	
Discovery Oaks	Oakleaf (92% Util.)*
Oakleaf Village	
Plantation Oaks	
Lake Asbury Zone	
Coppergate	Lake Asbury (99% Util.)*
Doctors Inlet	
Lake Asbury	
Middleburg	
Rideout	
Shadowlawn	

*Permanent capacity w/o new classroom wings.



Option C: New Junior High Wing Additions

- Oakleaf Junior and Lake Asbury Junior are both getting a 32 classroom addition



- Construction underway
- Both will be ready for the 2025-2026 SY.

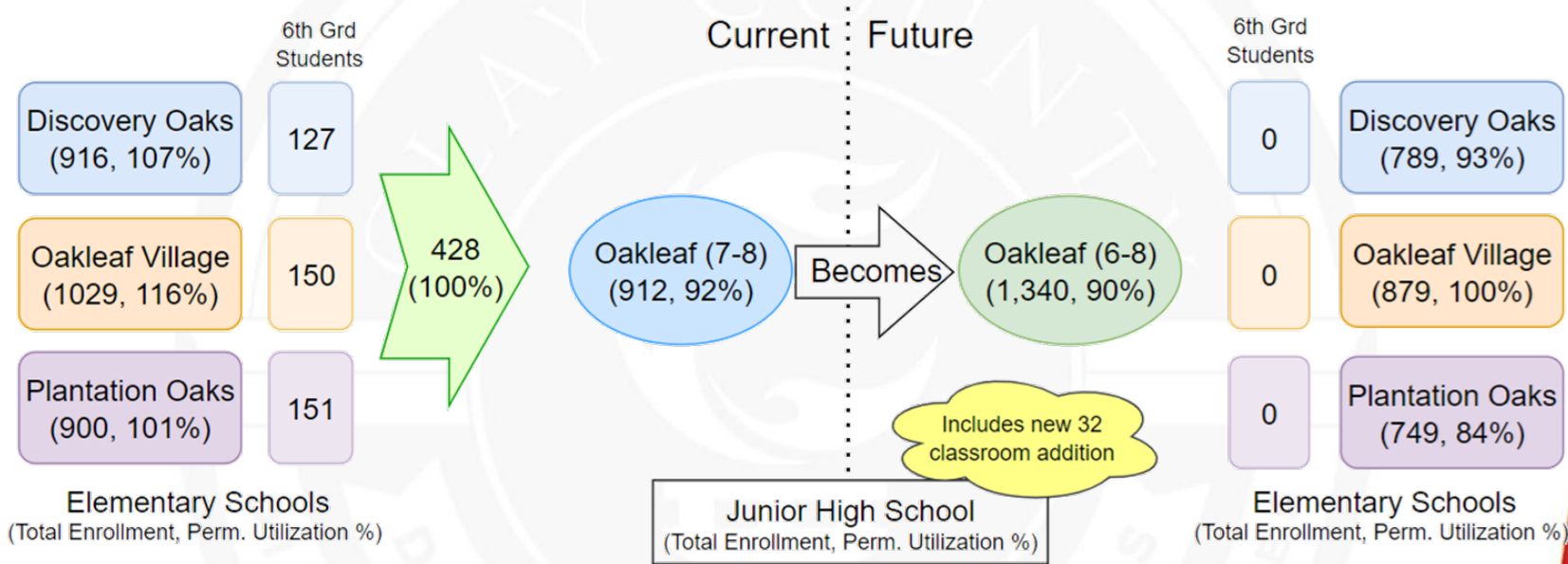


Option C: Junior High Wing Construction



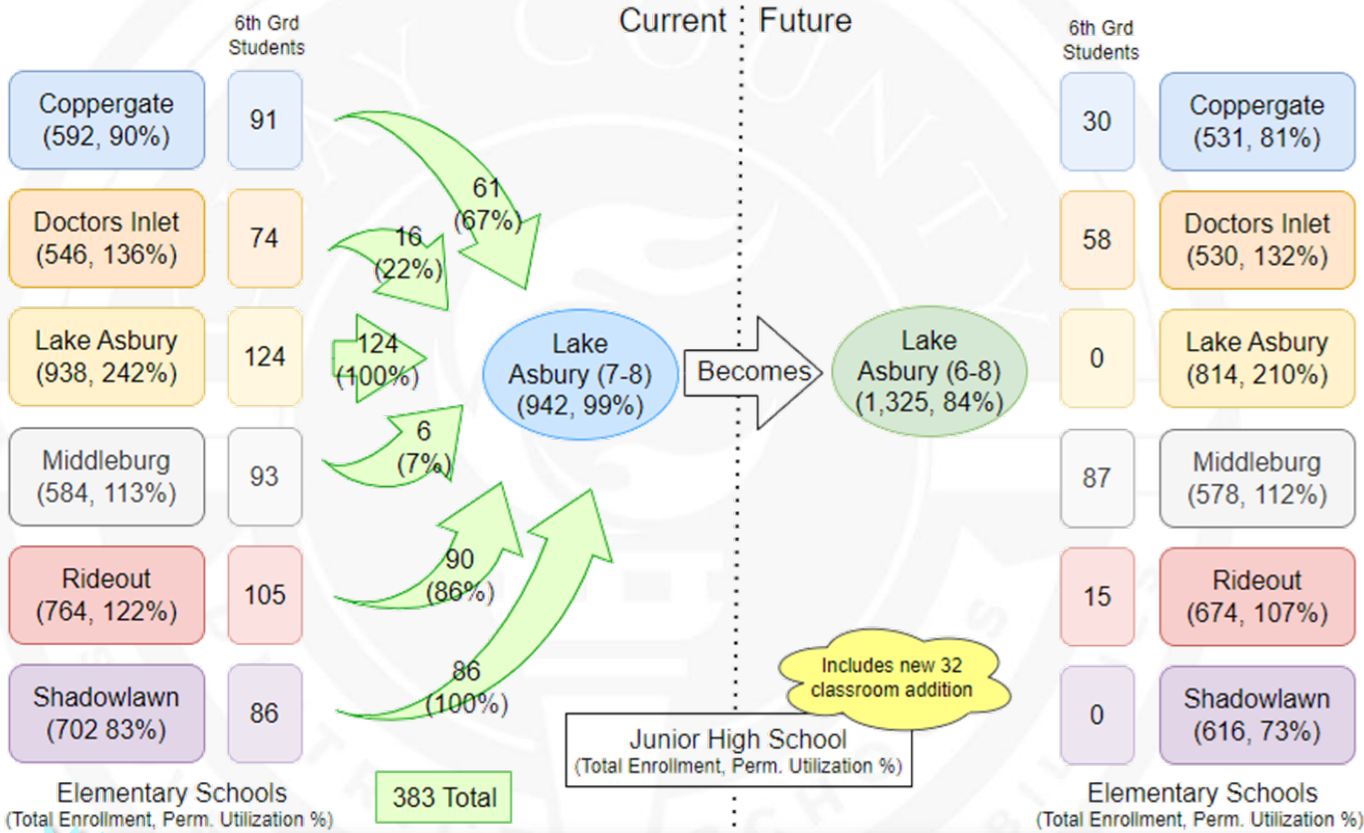
- Oakleaf Junior High wing under construction

Option C: Oakleaf Zone Result



Bonus: Eliminates the use of 21 elementary school portables.

Option C: Lake Asbury Zone Result



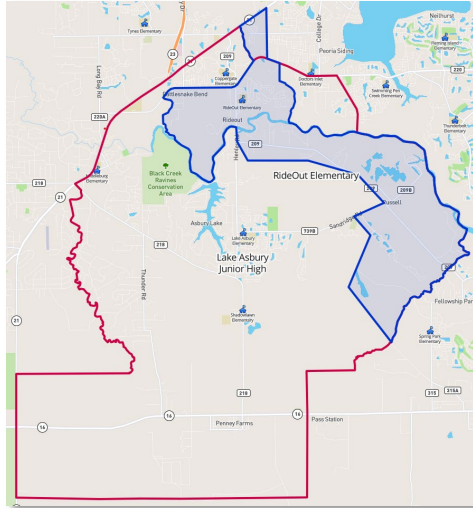
Bonus: Eliminates the use of 19 elementary school portables.

**Portable elimination after LAE and ROE classroom additions 27/28*

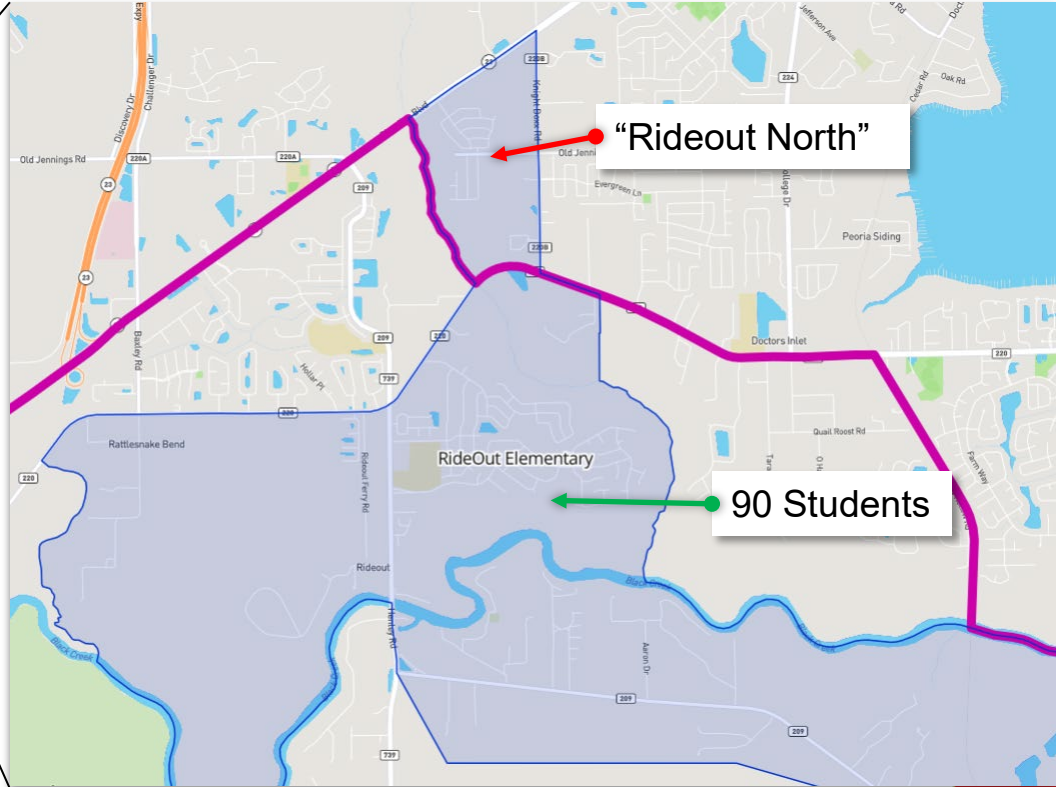


Rideout Challenge

- Rideout Elementary



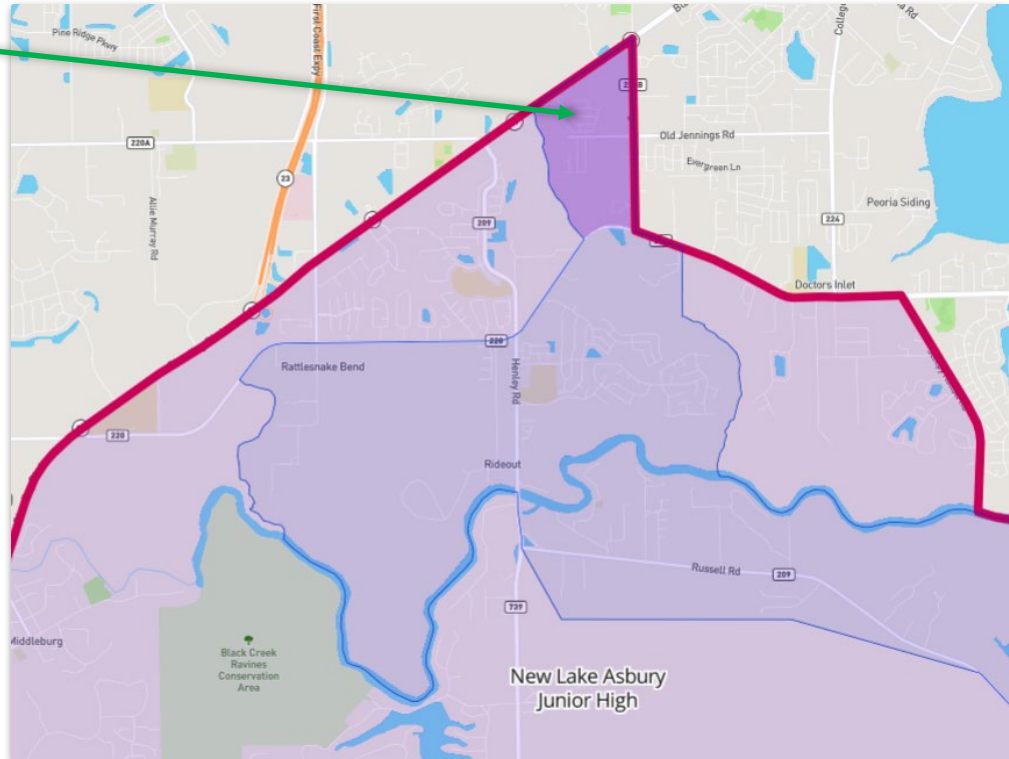
- 15 6th graders in “Rideout North”





Rideout Solution

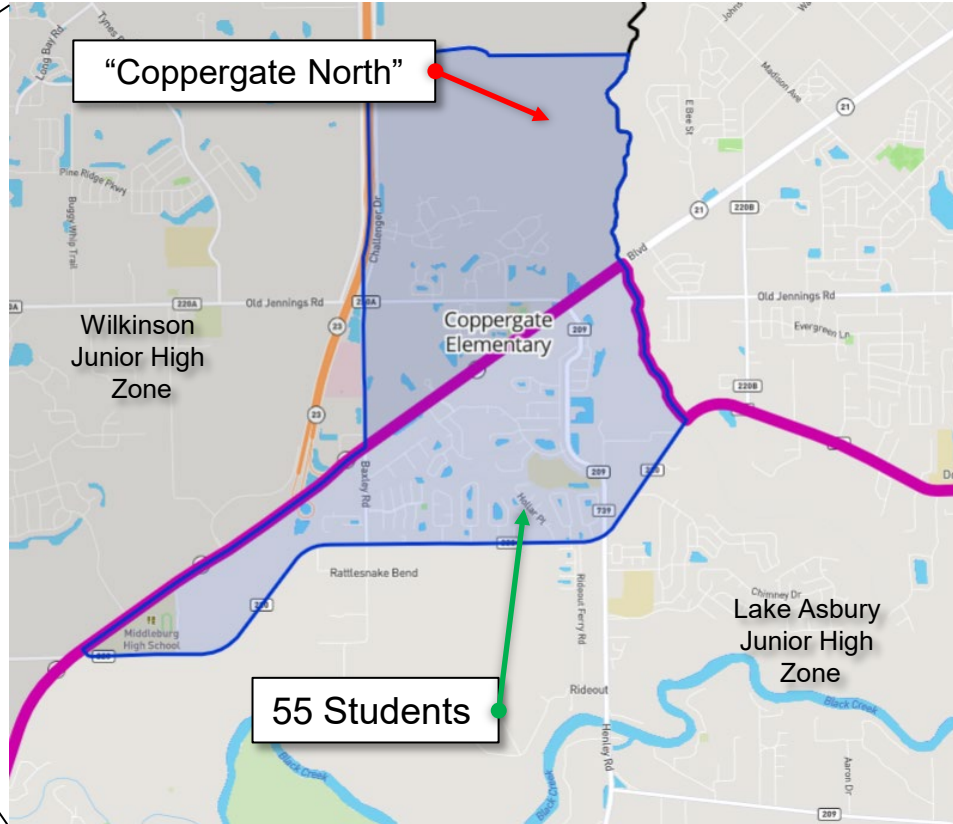
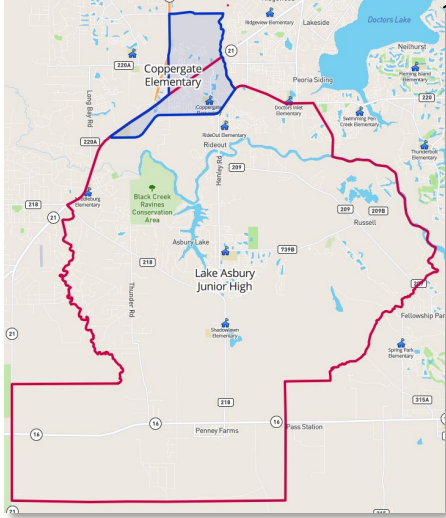
- Adjust LAJ boundaries to include all of Rideout
 - 100% of 6th graders attend LAJ.
 - 7th graders will go to LAJ
 - 8th graders will go to LAJ
 - 1 yr. option to stay at Lakeside JH





Coppergate Challenge

- Coppergate Elementary

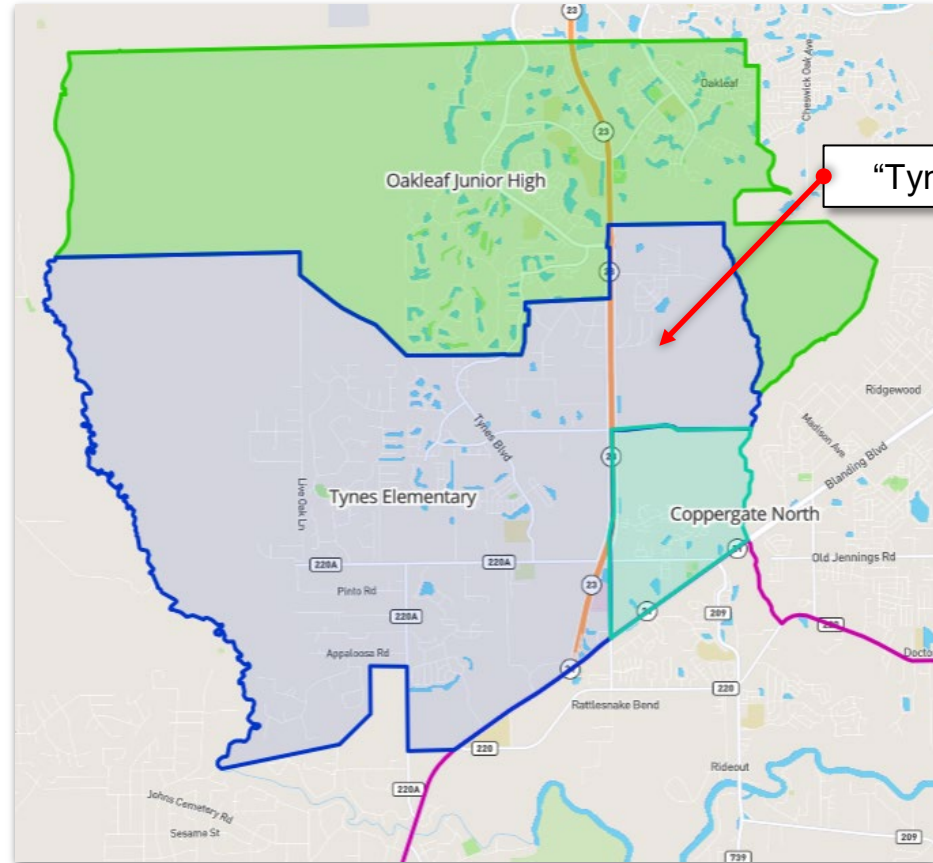


- “Coppergate North”
 - 21 6th graders
 - 15 7th graders



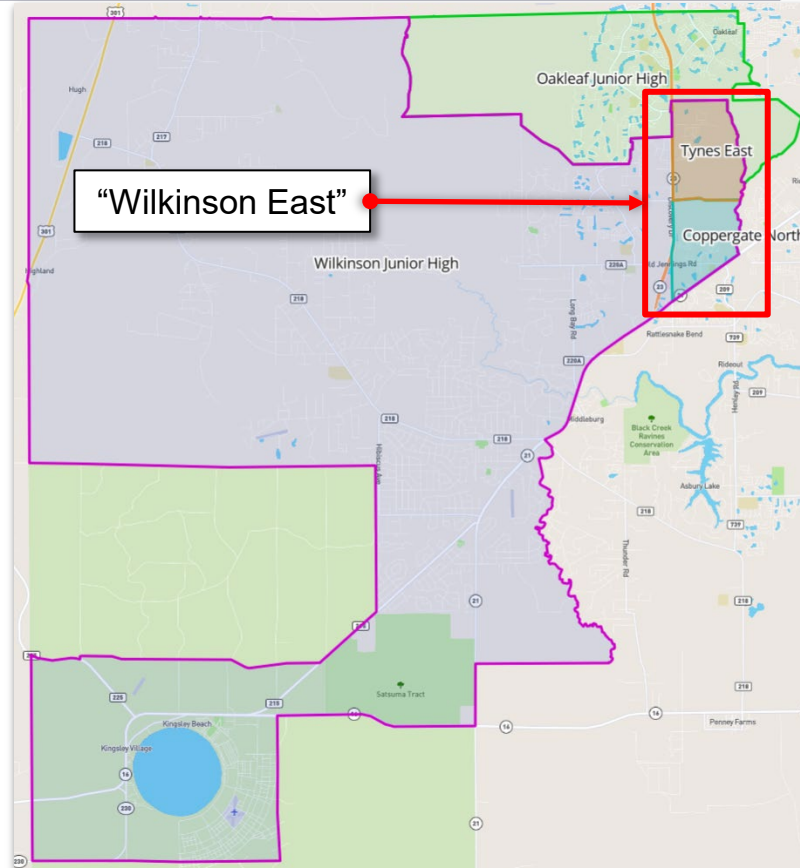
Coppergate Analysis

- Tynes Elementary
 - “Tynes East”
 - 30 6th graders
 - 36 7th graders



Coppergate Analysis (Cont.)

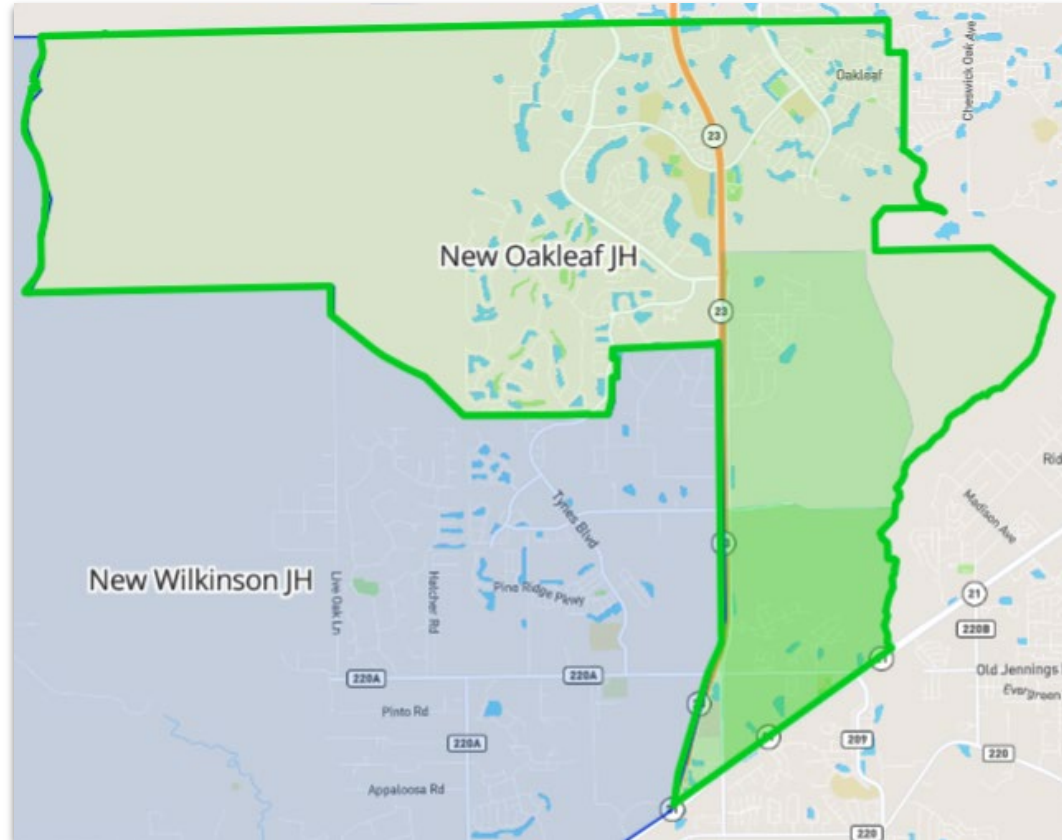
- Wilkinson Junior High
 - Both areas zoned for WJH for 7 & 8th grade.
 - “Wilkinson East”
 - 41 8th graders





Coppergate Solution

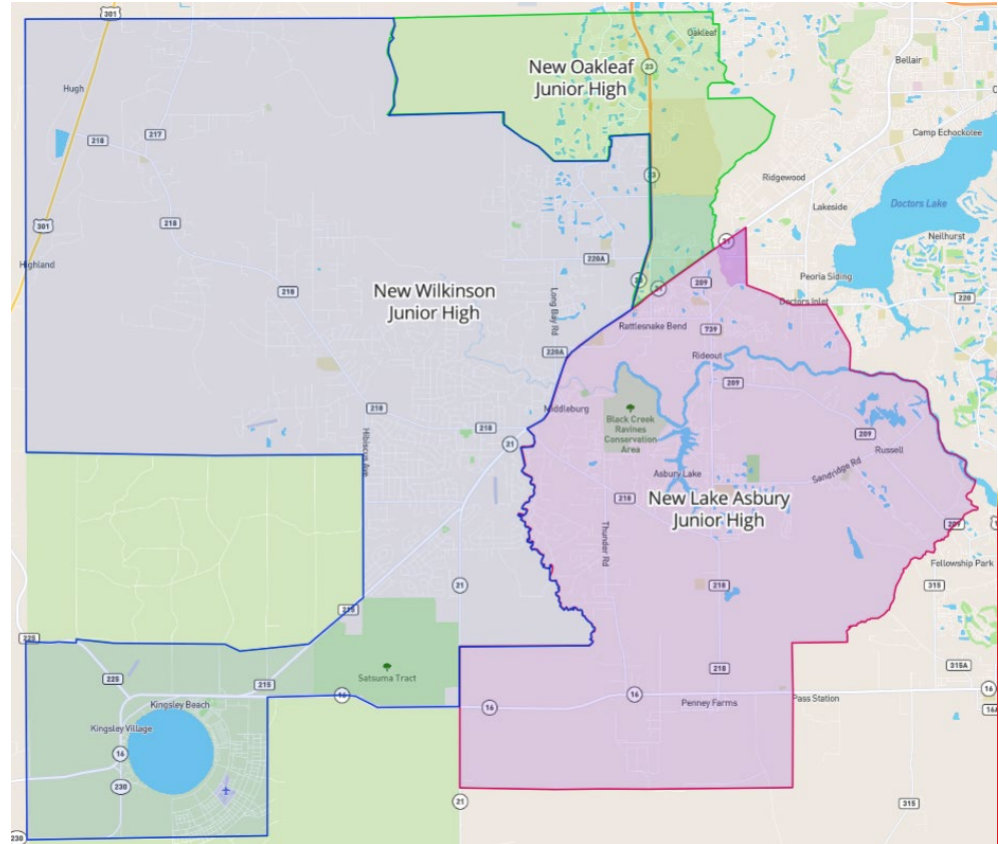
- Adjust OLJ & WJH boundaries
 - 100% of CGE 6th graders attend OLJ
 - 7th graders attend OLJ
 - 8th graders go to OLJ
 - 1 yr. option to stay at WJH



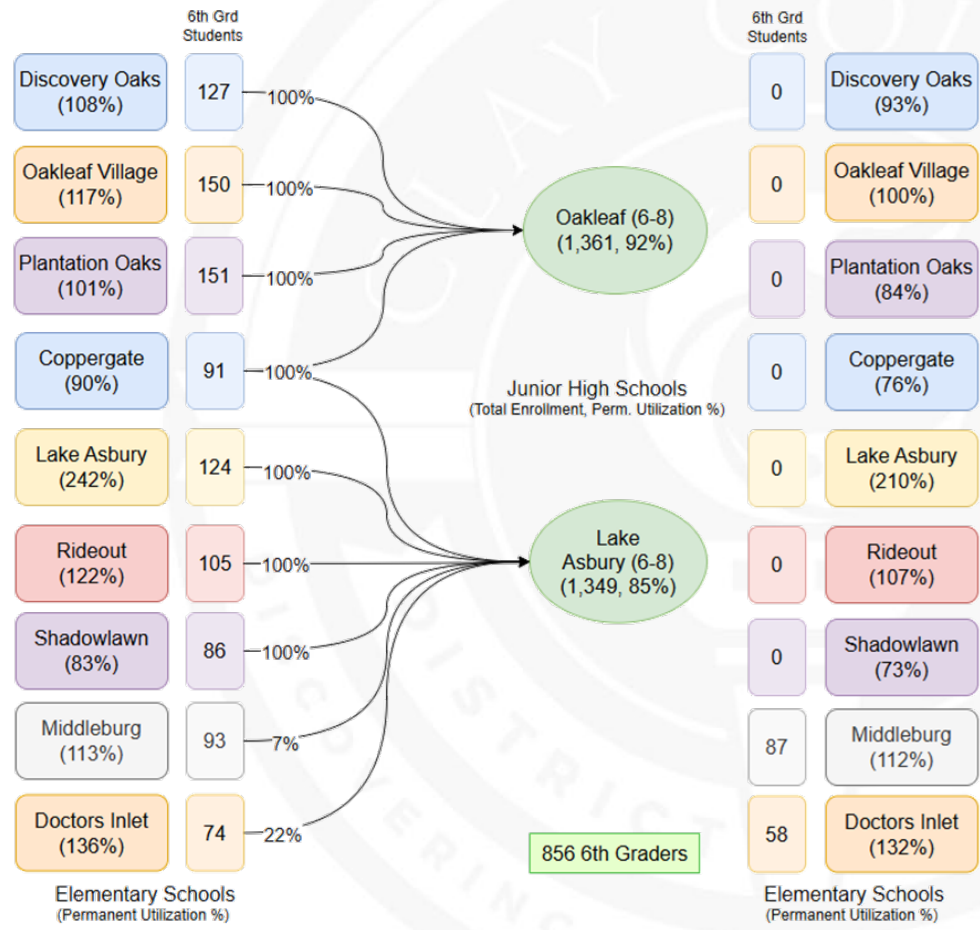


Coppergate & Rideout: Solution Summary

- Result:
 - Coppergate & Rideout
 - 100% of 6th graders move to a JH
 - Transportation is simplified
 - Capacity pressure reduced at Tynes Elementary and Wilkinson Junior too!



Option C: Putting It All Together



Option C Scorecard

Addresses Growth	✓
Relieve Capacity	✓
Fiscally Responsible	✓
Simplify Transportation	✓
Reduces Portables	✓

85 Total

Bonus: The 6th-8th approach is in use in 65 of 67 Florida districts

Summary of Results



OPTION		Simplify Transportation	Relieve Capacity	Portable Reduction	Address Growth	Fiscally Responsible
Option A	Status Quo			✓		
Option B	Build a New Elementary School		✓		✓	
Option C	Move 6th Grade to LAJ and OLJ	✓	✓	✓	✓	✓

Summary of Results



OPTION		Simplify Transportation	Relieve Capacity	Portable Reduction	Address Growth	Fiscally Responsible
Option A	Status Quo			✓		
Option B	Build a New Elementary School		✓		✓	
Option C	OLJ and LAJ 6th Grades	✓	- ✓	✓	- ✓	✓



Instructional Benefits

Heather Teto, Chief of Elementary Education



Student Benefits of Option C

Growth Management

- Addresses the current capacity challenges in elementary schools.
- Improves the educational setting by eliminating 40 classroom portables.

Curriculum Variety

- Junior highs provide diverse curricular options, including electives and advanced courses that cater to students' varied interests.



Student Benefits of Option C

Acceleration Options

Lake Asbury and Oakleaf Junior High Schools offer acceleration options.

- Lake Asbury Junior High offers the STEAM Institute.
- Oakleaf Junior High offers the Pre AICE program.

Curriculum Alignment

Curricula designed around K-5, 6-8, and 9-12 grade bands. Placing 6th grade in middle school aligns them with a curriculum designed for their developmental stage.

Development of Independence

Students will be provided the opportunity to develop and manage their academic commitments, fostering responsibility and time management skills.



- **Students will have the opportunity to participate on FHSAA-regulated athletic teams, competing across:**
 - **Fall:** Football, Cross Country, Volleyball, Flag Football
 - **Winter:** Basketball, Soccer, Wrestling
 - **Spring:** Baseball, Softball, Track
- **Early Exposure to Team Sports:** Building lifelong skills and interests



Student Benefits of Option C

Access to other programs and extracurricular activities

Increased access to sports, clubs, and activities allows students to explore new interests and forge friendships.

- Band
- Chorus
- Art
- Clubs



Longer Investment Period

With a three-year timeframe in junior high, we can focus more on student development compared to the current two-year model.



Considerations of Option C

Resource Allocation

Ensuring sufficient resources and support for both junior highs, including instructional staff, counseling services and administration.

Impact on Current Elementary Programs

Scheduling of classes with reduced 6th grade numbers and how this affects teacher assignments and certifications.

Administrative Readiness

Facilitate regular meetings between elementary and junior high staff to address resource needs, ensuring seamless communication and support structures are in place.



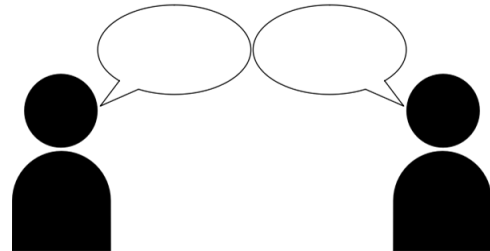
Considerations of Option C

Information Sessions

We will host regular meetings for parents and guardians to discuss this change, share resources, and address any questions.

Feedback Channels

Establishing feedback loops through surveys and forums will ensure that parents and students can voice their concerns and suggestions throughout the process.



Proposed Timeline for Adoption



Date	Item
October 29, 2024	<u>Workshop</u> Present Options at Board Workshop
Week of November 18, 2024	<u>Hold Community Meetings at Junior High Schools</u> 11/18 at the LAJ Cafeteria, 2851 Sandridge Rd. Green Cove Springs, FL. 11/20 at the OLJ Cafeteria, 4085 Plantation Oaks Blvd, Orange Park, FL.
November ?, 2024	<u>December Board Workshop</u>
December 12, 2024 (date tentative)	<u>December Board Meeting to vote & approve</u>
January 2025	<u>Incorporate in 2025-2026 SY plan</u>

Q & A

