

CLAY COUNTY DISTRICT SCHOOLS

Transportation Update 2025

Randall Crawford
Director - Transportation





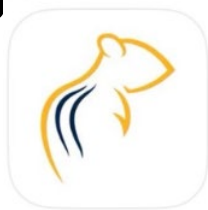
PRESENTATION AGENDA

- Transportation Updates
- Funding for Transportation
- Ridership
- Policy
- Registering for Transportation



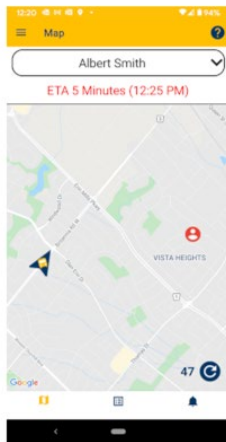
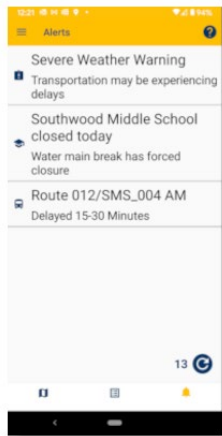
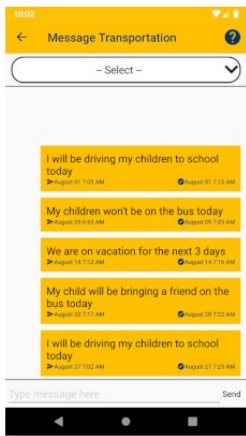
Transportation Updates 2025

- New App to ... Here Comes the Bus



chipmunk
School Bus Tracker

Two-way messaging and key notification alerts





Ridership and Funding

- **Increase in Ridership by 10% since 2023**
 - Over **15,000 students** transported daily
- **State Funding for Student Transportation**
 - Only receive funding for FTE living 2 miles or more from school (F.S. 1011.68)
- **Pursuant to Florida Administrative Code**
 - "A reasonable walking distance for any student who is not otherwise eligible for transportation pursuant to Section 1011.68, F.S., is any distance not more than two (2) miles between the home and school".



Transportation Funding

- **CCDS Courtesy Riders (0-2mi) provided for the following:**
 - IEP plan requires special transportation
 - Temporarily disabled students
 - Hazardous Walking Conditions - [FLDOE Form](#)
- **Actual CCDS Courtesy Riders:**
 - 960 E, 58 JH, 240 HS = 1,258
 - Equivalent to **13 buses**
 - Equivalent to **\$650K** in missed funding
- **Other Florida Districts using 2.0 miles?***
 - Putnam
 - St. Johns
 - Alachua
 - Pinellas
 - Orange
 - Hillsborough
 - Sarasota
 - Putnam

**Courtesy Riders Study*

***Majority of the state - Report*



School Board Policy

CCDS New Policy Proposal (8600):

In accordance with F.S.(F.S. 1011.68), Students living within ~~one and one-half (1 1/2)~~ **two (2)** miles of school may be provided District bus transportation under the following conditions:

- Permanently disabled students, whose Individual Education Plan requires special transportation.
- Temporarily disabled students upon request and verification of disability and length of time of disability.
- Students whose walking routes to school meet the State criteria for hazardous walking conditions.

Allows flexibility for the district to consider the following:

- Bus availability
- Staffing
- Funding

Transportation Website



Register

Menus

Transportation

Calendars

Portals

Departments

Jobs

Volunteer

Transparency

Contact Us

MENU SCHOOLS ▾ TRANSLATE ▾ 🔍

CLAY COUNTY DISTRICT SCHOOLS // DEPARTMENTS // TRANSPORTATION

Transportation

- Job Opportunities Transportation
- Find Your School Zone
- Transportation "Go To" Links
- Transportation Eligibility
- Transportation Handbook
- Contact Us

Transportation

Welcome to Clay County District Schools Transportation Department

Don't miss the bus!

Please download the ["Here Comes The Bus"](#) app and register your child to see your bus assignment.

Transportation Department

3674 CR 220 Middleburg, Florida 32068

Main Phone: (904) 336-0001

Option 2 for Dispatch and Student Bus Information.

Office hours of 7:30 am to 4:00 pm

Our dispatcher is also on duty for emergencies during times when buses are operating home-to-school or school-to-home bus service and may be reached at (904) 336-0001.

Mission:

Clay County Schools' Transportation Department is dedicated to providing safe, effective and efficient service in a professional and responsive manner.

Clay County District Schools

Clay County School District
900 Walnut Street
Green Cove Springs, FL 32043
Phone: (904) 336-6500





Transportation Website

[Home](#) [School Information](#) [Which School do I Attend?](#) [Can I Ride a Bus?](#)

[Log In](#) ▼

[Online Forms and Requests](#)

Can I Ride a Bus?

Street Number

Street Name

Municipality

--Select-- ▼

District

School District of Clay County ▼

Submit