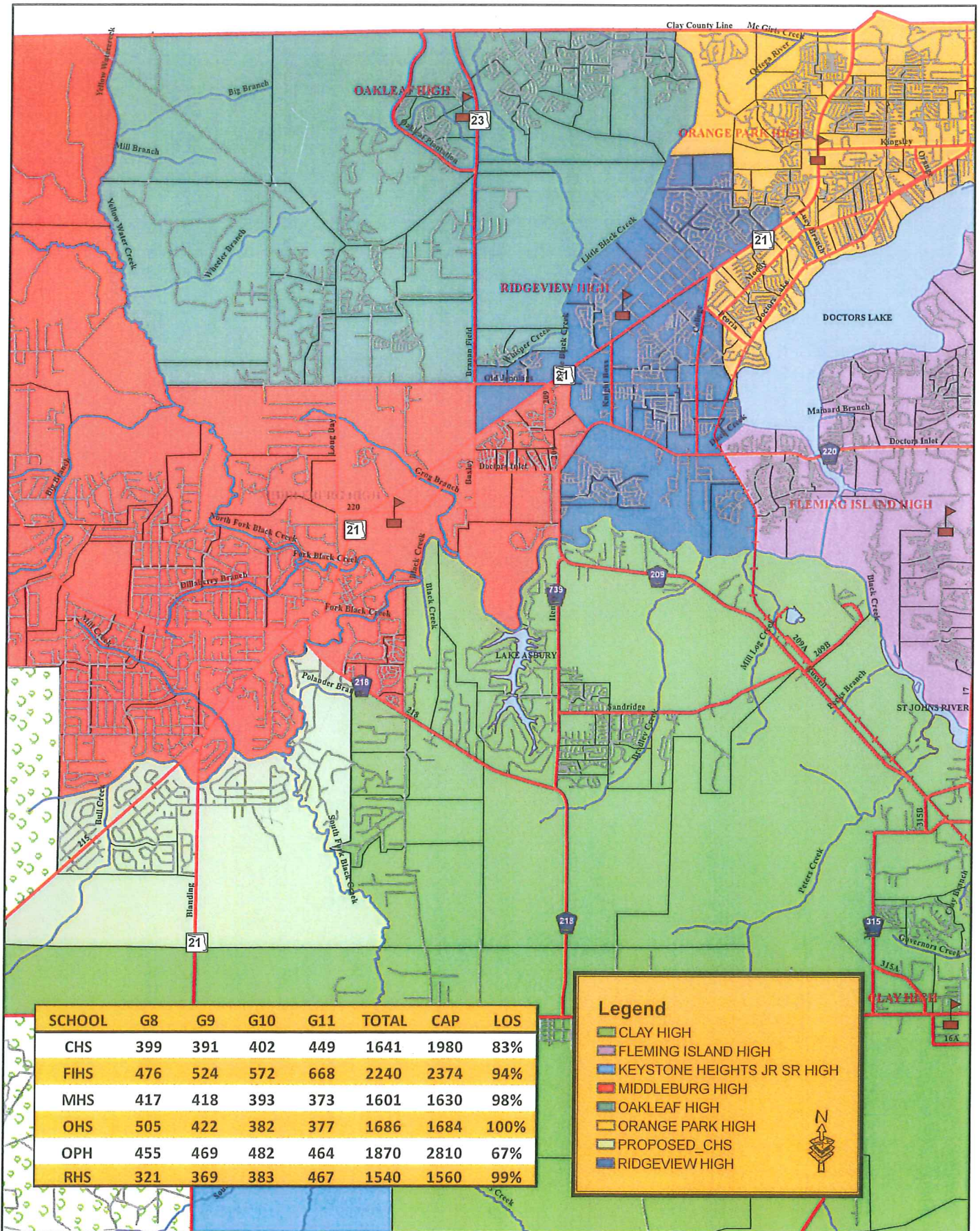


CONCEPT_2_OHS_1011



SCHOOL	G8	G9	G10	G11	TOTAL	CAP	LOS
CHS	399	391	402	449	1641	1980	83%
FIHS	476	524	572	668	2240	2374	94%
MHS	417	418	393	373	1601	1630	98%
OHS	505	422	382	377	1686	1684	100%
OPH	455	469	482	464	1870	2810	67%
RHS	321	369	383	467	1540	1560	99%

Legend

- CLAY HIGH
- FLEMING ISLAND HIGH
- KEYSTONE HEIGHTS JR SR HIGH
- MIDDLEBURG HIGH
- OAKLEAF HIGH
- ORANGE PARK HIGH
- PROPOSED_CHS
- RIDGEVIEW HIGH

N
↑

Concept _02_OHS_1011

Notes for overall redistricting:

- Student numbers based on where a student resides within the School District
- Student numbers do not account for Home Schools or Special Pupil Assignments (SPRs)
- Student numbers do not account for Vocational Academies assignments
- Major state park; large land mass within Concurrency Service Area (CSA)

OHS Boundaries:

- Beginning at the intersection of the centerline of Yellow Water Creek and the northern boundary of Clay County being in Section 32, Township 3 South, Range 24 East, for a point of beginning; thence southerly along the centerline of Yellow Water Creek to the intersection of the centerline of North Fork Black Creek; thence along the centerline of North Fork Black Creek in a southeasterly direction to a point on the south boundary of Section 28, Township 4 South, Range 24 East; thence east along the section line to the centerline of Old Jennings Road; thence east along the centerline of Old Jennings Road to a point of intersection with the centerline of Branan Field Road; thence north along the centerline of Branan Field Road to a point of intersection with Whisper Creek; thence easterly along the centerline of Whisper Creek to a point of intersection with the centerline of Little Black Creek; thence northerly along the centerline of Little Black Creek to the intersection of the eastern boundary of Section 3, Township 4 South, Range 25 East; thence north along the eastern boundary to the eastern boundary of Section 34, Township 4 South, Range 25 East; thence north along the section line until it intersects with the northern boundary of Clay County; thence west along the northern boundary of Clay County to the point of beginning.

MHS/RHS boundary changes:

- Remain as in Concept 01

MHS/CHS boundary changes:

- Move approx 179 students from MHS to CHS.
- From the intersection of County Road 218 and the centerline of South Fork Black Creek; thence in a southwesterly direction along the centerline of South Fork Black Creek to a point of intersection of the centerline of Bull Creek; thence westerly along the centerline of Bull Creek until it intersects with the centerline of Section 30, Township 5 South, Range 24 East (the eastern boundary of Camp Blanding); thence south along the section line to the intersection of the centerline of County Road 215; thence in a southwesterly direction along the centerline of County Road 215 until it intersects with the centerline of the southwest corner of Section 6, Township 5 South, Range 24 East; thence east along the centerline of the section line until it intersects with the centerline of South Fork Black Creek; thence north along the centerline of

South Fork Black Creek until it intersects with the centerline of County Road 218 which is the point of beginning.

High Schools with Level Of Service (LOS) Affected:

- RHS from a LOS of 104% to 99% (max LOS is 110% for all schools)
- MHS from a LOS of 133% to 98%
- OPH from a LOS capacity of 105% to 67%
- OHS opens with 100%
- CHS from a LOS capacity of 71% to 83%

Positives:

- Neighborhoods remain intact
- Use of natural boundaries for OHS (CSA)
- Reduces MHS LOS to 98% allowing for potential growth
- CHS boundary already extends to the Kingsley Lake area
- Increases CHS student numbers

Negatives:

- Bus Routes could be conceived as unreasonable in length and time to CHS from CR 218 (Approx. 18/20 miles to CHS)

Student Capacity For "Concept 02" 2009/10 thru SY 2014/15 (Based on DOE 2009 COFTE)

School Code	SCHOOL NAME	Total FISH Capacity	Core (Cafeteria + multipurpose area)	FISH or Core Cap. (lesser of)	SY 10/11			SY 11/12			SY12/13			SY 13/14			SY 14/15		
					CCSD Projected Enroll.	FISH or Core Capacity (lesser of)	Util.	COFTE Enroll.	FISH or Core Capacity (lesser of)	Util.	COFTE Enroll.	FISH or Core Capacity (lesser of)	Util.	COFTE Enroll.	FISH or Core Capacity (lesser of)	Util.	COFTE Enroll.	FISH or Core Capacity (lesser of)	Util.

High School 2009-13

CHS	Clay High	1980	2170	1980	1641	1980	83%	1519	1980	77%	1510	1980	76%	1516	1980	77%	1528	1980	77%
FIH	Fleming Island High	2374	2480	2374	2240	2374	94%	2073	2374	87%	2062	2374	87%	2070	2374	87%	2086	2374	88%
MHS	Middleburg High	2468	1630	1630	1601	1630	98%	1482	1630	91%	1473	1630	90%	1479	1630	91%	1491	1630	91%
OPH	Orange Park High	3232	2810	2810	1870	2810	67%	1731	2810	62%	1721	2810	61%	1728	2810	61%	1742	2810	62%
RHS	Ridgeview High	2627	1560	1560	1540	1560	99%	1425	1560	91%	1417	1560	91%	1423	1560	91%	1434	1560	92%
OHS	Oakleaf High School (QQQ)	1684	2250	1684	1686	1684	100%	1560	1684	93%	1552	1684	92%	1558	1684	93%	1570	1684	93%
		14365	12900	12038	10578	12038	88%	9790	12038	81%	9735	12038	81%	9774	12038	81%	9851	12038	82%

Combination / Other 2009-13

BLC	Bannerman Learning Center	526	330	330		330	0%		330	0%		330	0%		330	0%		330	0%
KHHS	Keystone Heights High (7-12)	1458	2130	1458	764	1458	52%	707	1458	48%	760	1458	52%	767	1458	53%	773	1458	53%
Total:		1984	2460	1788	764	1788	43%	707	1788	40%	760	1788	43%	767	1788	43%	773	1788	43%

Student Total:					11342			10497			10495			10541			10624		
DOE Capital Outlay FTE Forecast (COFTE):					10824			10496			10495			10540			10625		

111222343	Indicates new student number
	LOS Exceeds 100%
	LOS Exceeds 110%
112234	Indicates New Capacity

OAKLEAF HIGH SCHOOL

(9-12 GRADE STRUCTURE)

ATTENDANCE ZONE AS FOLLOWS:

Begin at the intersection of the centerline of Yellow Water Creek and the northern boundary of Clay County being in Section 32, Township 3 South, Range 24 East, for a point of beginning; then southerly along the centerline of Yellow Water Creek to a point of intersection with the centerline of the North Fork Black Creek; thence southeasterly along the center line of North Fork Black Creek a point on the southern section line of Section 28, Township 4, Range 24 East; thence east along the section line to a point of intersection with the centerline of Old Jennings Road; thence east along the centerline of Old Jennings Road to a point of intersection with the centerline of Branan Field Road; thence north along the centerline of Branan Field Road to a point of intersection with the centerline of Whisper Creek; thence easterly along the centerline of Whisper Creek to a point of intersection with the centerline of the Little Black Creek; thence northerly along the centerline of Little Black Creek to the intersection of the eastern section line of Section 3, Township 4 South, Range 25 East; thence north along the section line to a point of intersection with the northern boundary of Clay County; then west along the northern boundary of Clay County to the centerline of Yellow Water Creek that also being the point of beginning.

THIS ATTENDANCE ZONE WAS APPROVED BY THE CLAY COUNTY SCHOOL BOARD ON:

ORIGINAL APPROVAL - DECEMBER 17, 2009

(EFFECTIVE – AUGUST 2010)

CLAY HIGH SCHOOL

(9-12 GRADE STRUCTURE)

ATTENDANCE ZONE AS FOLLOWS:

Begin at the most southeastern point of Clay County for a point of beginning; thence west on the Clay County Boundary to a point described as the southwest corner of Section 7, Township 8 South, Range 25 East; thence north along the section line to the northeast corner of Section 25, Township 6 South, Range 24 East; thence west along the section line to the southwest corner of Section 22, Township 6 South, Range 24 East; thence North along the section line (also State Road 21, Blanding Boulevard) to the center-line of State Road 16; thence west along the center line of State Road 16 to the Northwest corner of Section 13, Township 6 South, Range 23 East; thence South to the Southwest corner of Section 25, Township 6 South, Range 23 East; thence West along the Section line to the southwest corner of Section 30, Township 6 South, Range 23 East, also being the West boundary of Clay County; thence north along the Clay County/Bradford County Boundary line to the northwest corner of Section 7, Township 6 South, Range 23 East; ~~thence east on the Section line to the southeast corner of Section 2, Township 6 South, Range 24 East; thence north along the section line to the center line of County Road 218; thence east on the section line to a point of intersection with the center line of County Road 215; thence northeasterly along the center line of County Road 215 to a point of intersection with the eastern section line of Section 5, Township 5 South, Range 24 East (also known as the northeast boundary of Camp Blanding); thence in a northerly direction along the section line of Section 6, Township 6 South, Range 24 East (also known as the northeast boundary of Camp Blanding) to a point of intersection with the center line of Bull Creek; thence in an easterly direction along the center line of Bull Creek to a point of intersection~~

with the center line of South Fork Black Creek; thence northeasterly along the center line of South Fork Black Creek to a point of intersection with the center line of County Road 218;
thence in a southeasterly direction along the center line of County Road 218 to a point of intersection with the eastern section line of Section 24, Township 5 South, Range 24 East (a line just west of Green Road); thence north along this section line to a point of intersection with the South Fork of Black Creek; thence easterly along the center line of the South Fork of Black Creek to the point of intersection with the North Fork of Black Creek; thence easterly along the center line of Black Creek to the intersection with the center line of the St. Johns River, which is the Clay County/St. Johns County Boundary; thence south along the Clay County/St. Johns County Boundary to the most southeastern point of Clay County, which is the point of beginning.

THIS ATTENDANCE ZONE WAS APPROVED BY THE CLAY COUNTY SCHOOL BOARD ON:

ORIGINAL APPROVAL - July 12, 1983

REVISION #1 - July 12, 1984

REVISION #2 - May 14, 1987

REVISION #3 - August 2, 1988

REVISION #4 - June 15, 1993

REVISION #5 - January 20, 1994

REVISION #6 - July 17, 1997

REVISION #7 - May 16, 2002

REVISION #8 - December 17, 2009

(Effective August 20032010)

MIDDLEBURG HIGH SCHOOL

(9-12 GRADE STRUCTURE)

ATTENDANCE ZONE AS FOLLOWS:

Begin at the most northwestern point in Clay County for a point of beginning: thence east along the ~~northern~~ Clay County boundary, which is the Clay County/Duval County line, to the point of intersection with the center line of ~~Branan Field Road~~ Yellow Water Creek; thence south along the center line of Yellow Water Creek to a point of intersection with the center line of the North Fork Black Creek; thence southeasterly along the North Fork Black Creek to a point of intersection on the southern section line of Section 28, Township 4 South, Range 24 East; thence east along the southern section line of Section 28, Township 4 South, Range 24 East to a point of intersection with the center line of Old Jennings Road (County Road 220A); thence east along the center line of Old Jennings Road (County Road 220A) to a point of intersection with the center line of Branan Field Road (State Road 23); thence in a southerly direction along the center line of Branan Field Road (State Road 23) to a point of intersection with the center line of Blanding Boulevard (State Road 21); thence north along the center line of Blanding Boulevard (State Road 21) to a point of intersection with the centerline of Little Black Creek; thence southerly along the center line of Little Black Creek to a point of intersection with the center line of County Road 220; thence southwesterly along the center line of County Road 220 to a point of intersection with the center line of Russell Road (County Road 209); thence south along Russell Road (County Road 209); ~~thence south to a point of intersection with the center line of County Road 220A (Old Jennings Road)~~; ~~thence east along the center line of County Road 220A~~

~~(Old Jennings Road) to a point of intersection with the center line of State Road 21 (Blanding Boulevard); thence north to the center line of Little Black Creek; thence south along the center line of Little Black Creek to a point of intersection with County Road 220; thence southwesterly along the center line of County Road 220 to the centerline of County Road 209 (Russell Road); thence south along the center line of County Road 209 (Russell Road) to a point of intersection with the center line of Black Creek (midpoint of the bridge); thence in a general southwesterly direction along the center line of Black Creek to the point of intersection with the North Fork and South Fork of Black Creek; thence in a southwesterly direction along the center line of the South Fork Black Creek to a point of intersection with the eastern section of Section 12, Township 5 South, Range 24 East; thence south along the section line to a point of the intersection with of the center line of County Road 218; thence ~~in a northwesterly direction~~ along the center line of County Road 218 to a point of intersection with the eastern section of Section 23, Township 5 South, Range 24 East (a point just east of Ruth Knight Road); thence south along the section line to the southeast corner of Section 2, Township 6 South, Range 24 East; with the center line of the South Fork Black Creek; thence southeasterly along the center line of the South Fork Black Creek to a point of intersection with the center line of Bull Creek; thence westerly along the center line of Bull Creek to a point of intersection on the eastern section line of Section 30, Township 5 South, Range 24 East (also known as the eastern boundary of Camp Blanding); thence south along the section line to a point of intersection with the center line of County Road 215; thence southwesterly along the center line of County Road 215 to a point of intersection with the northern section line of Section 12, Township 6 South, Range 23 East; thence west along the section line to a point of intersection with the~~

western Clay County boundary, which is the Clay County/eastern Bradford County line, at the southwest being the northwest corner of Section 7, Township 6 South, Range 23 East; thence north along the section line, also being the western Clay County/eastern Bradford County line boundary ~~to the northwest corner of Clay County~~, which is the point of beginning.

THIS ATTENDANCE ZONE WAS APPROVED BY THE CLAY COUNTY SCHOOL BOARD ON:

ORIGINAL APPROVAL - July 12, 1983

REVISION #1 - May 14, 1987

TECHNICAL EDIT - October 5, 1990

REVISION #2 - November 19, 1991

REVISION #3 - July 16, 1992

REVISION #4 - January 20, 1994

REVISION #5 - July 17, 1997

REVISION #6 - May 16, 2002

REVISION #7 – December 17, 2009

(EFFECTIVE – AUGUST 2010)

ORANGE PARK HIGH SCHOOL

(9-12 GRADE STRUCTURE)

ATTENDANCE ZONE AS FOLLOWS:

Begin at the most northeastern point in Clay County for a point of beginning: thence west along the northern Clay County boundary, which is the Clay County/Duval County line, ~~to the intersection with the center line of Branan Field Road; thence south along the center line of Branan Field Road to the southwest corner of Section 8, Township 4 South, Range 25 East;~~ to a point of intersection with the eastern section line of Section 34, Township 3 South, Range 25 East; thence south along the section line to a point of intersection with the center line of Little Black Creek; thence south along the center line of Little Black Creek to a point of intersection with the northern section line of Section 15, Township 4 South, Range 25 East; thence east along the section line to the northeast corner of Section 14, Township 4 South, Range 25 East; thence south along the east line of Section 14, Township 4 South, Range 25 East to a point midway between Foxridge Road and Charles Pinckney Street; thence in a easterly direction on a line 500 feet south and parallel to Constitution Drive (line runs between Stonebridge/Woods of Filmore Subdivisions and Heritage Hills Subdivision) for a distance of 2000 feet to a point midway between Stonebridge and Heritage Hills Subdivisions, thence south to a point of intersection with the center line of State Road 21 (Blanding Boulevard); thence southwest along the center line of State Road 21 (Blanding Boulevard) to the center line of County Road 224 (College Drive); thence south along the center line of County Road 224 (College Drive) to a point 200 feet

south of the center line of County Road 224A (Peoria Road); thence southeast along a line parallel and south of

County Road 224A (Peoria Road) to the intersection with the western boundary of Section 39, Township 4 South, Range 25 East; thence south along the western boundary of Section 39, Township 4 South, Range 25 East to the shore of Doctors Lake; thence northeasterly along the shore of Doctors Lake to a point of intersection with the center line of the St. Johns River, which is the eastern boundary of Clay County and the Clay County/Duval County line; thence north on the eastern Clay County boundary to the northeastern corner of Clay County, which is the point of beginning.

THIS ATTENDANCE ZONE WAS APPROVED BY THE CLAY COUNTY SCHOOL BOARD ON:

ORIGINAL APPROVAL - July 12, 1983

REVISION #1 - July 12, 1984

REVISION #2 - May 14, 1987

TECHNICAL EDIT - October 5, 1990

REVISION #3 - November 21, 1991

REVISION #4 - July 16, 1992

REVISION #5 - January 20, 1994

REVISION #6 - July 17, 1997

REVISION #7 - May 16, 2002

REVISION #8 - December 17, 2009

(EFFECTIVE – AUGUST 2010)

RIDGEVIEW HIGH SCHOOL

(9-12 GRADE STRUCTURE)

ATTENDANCE ZONE AS FOLLOWS:

Begin at the intersection of the centerline of Branan Field Road and the southern section line of Section 7, Township 4 South, Range 25 East; thence east along the section line to the northeast corner of Section 14, Township 4 South, Range 25 East; thence south along the eastern section line of Section 14, Township 4 South, Range 25 East to a point midway between Foxridge Road and Charles Pinckney Street; thence in an easterly direction on a line 500 feet south and parallel to Constitution Drive (line runs between Stonebridge/Woods of Filmore Subdivisions and Heritage Hills Subdivision) for a distance of 2000 feet to a point midway between Stonebridge and Heritage Hills Subdivisions; thence south to a point of intersection with the center line of State Road 21 (Blanding Boulevard); thence southwesterly along State Road 21 to the intersection with County Road 224 (College Drive); thence south along the center line of County Road 224 (College Drive) to a point 200 feet south of the intersection of the center lines of County Road 224 (College Drive) and County Road 224A (Peoria Road); thence southeast along a line parallel and south of County Road 224A (Peoria Road) to the western boundary of Section 39, Township 4 South, Range 25 East; thence south along the western boundary of Section 39, Township 4 South, Range ~~24~~25 East to the shore of Doctors Lake; thence in a southerly direction along the shore of Doctors Lake to a point of intersection with Duck Creek; thence in a westerly direction along the centerline of Duck Creek to the intersection of the CSX Transportation railroad tracks; thence south along the centerline of the CSX Transportation railroad tracks to Black Creek; thence west along the centerline of Black Creek to County Road 209 (Russell Road); thence north along the centerline of County Road 209 (Russell Road) to the intersection of County Road 220; thence east along the centerline of County Road 220 to the intersection of Little Black Creek; thence north along the centerline of Little Black Creek to the intersection with State Road 21 (Blanding Boulevard); thence south along the center line of State Road 21 (Blanding Boulevard) to a point of intersection with the center line of Branan Field Road (State Road 23); thence

north along the center line of Branan Field Road (State Road 23) then north along Branan Field Road to a point of intersection with the center line of Whisper Creek; thence northeasterly along the center line of Whisper Creek to a point of intersection with the center line of the Little Black Creek; thence north along the center line of the Little Black Creek to a point of intersection with the northern section line of Section 15, Township 4 South, Range 25 East; thence east along the northern section line of Section 15, Township 4 South, Range 25 East to a point of intersection with the northeast corner of Section 14, Township 4 South, Range 25 East that being also the point of beginning. the intersection with County Road 220A (Old Jennings Road); thence west along the center line of County Road 220A (Old Jennings Road) to the intersection of Branan Field Road; thence north along the centerline of Branan Field Road to the intersection with the southern line for Section 7, Township 4 South, Range 25 East, which is the point of beginning.

THIS ATTENDANCE ZONE WAS APPROVED BY THE CLAY COUNTY SCHOOL BOARD ON:

ORIGINAL APPROVAL - July 17, 1997
REVISION #1 - May 16, 2002
REVISION #2 - December 17, 2009