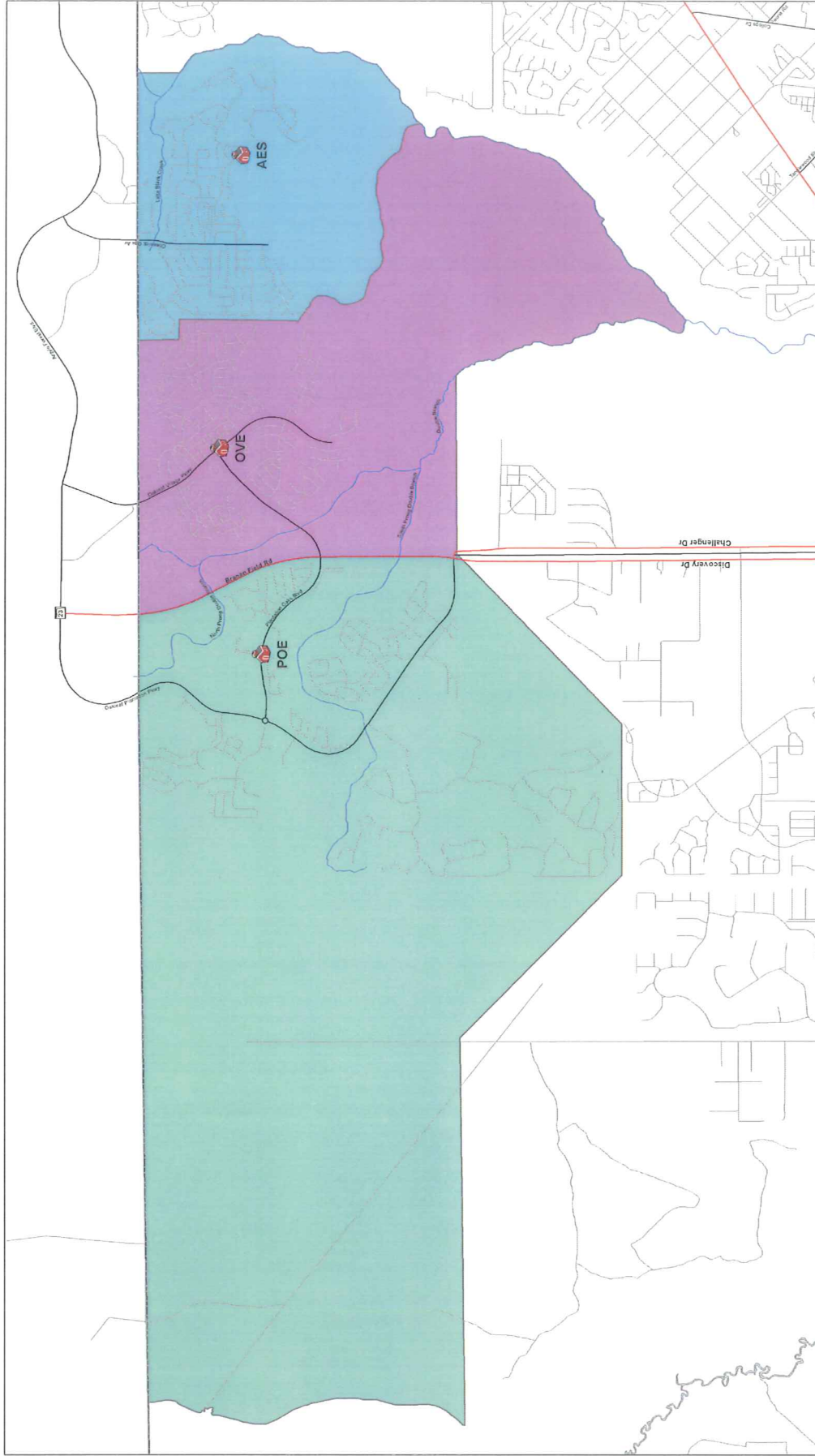


# OAKLEAF AREA CURRENT ZONES

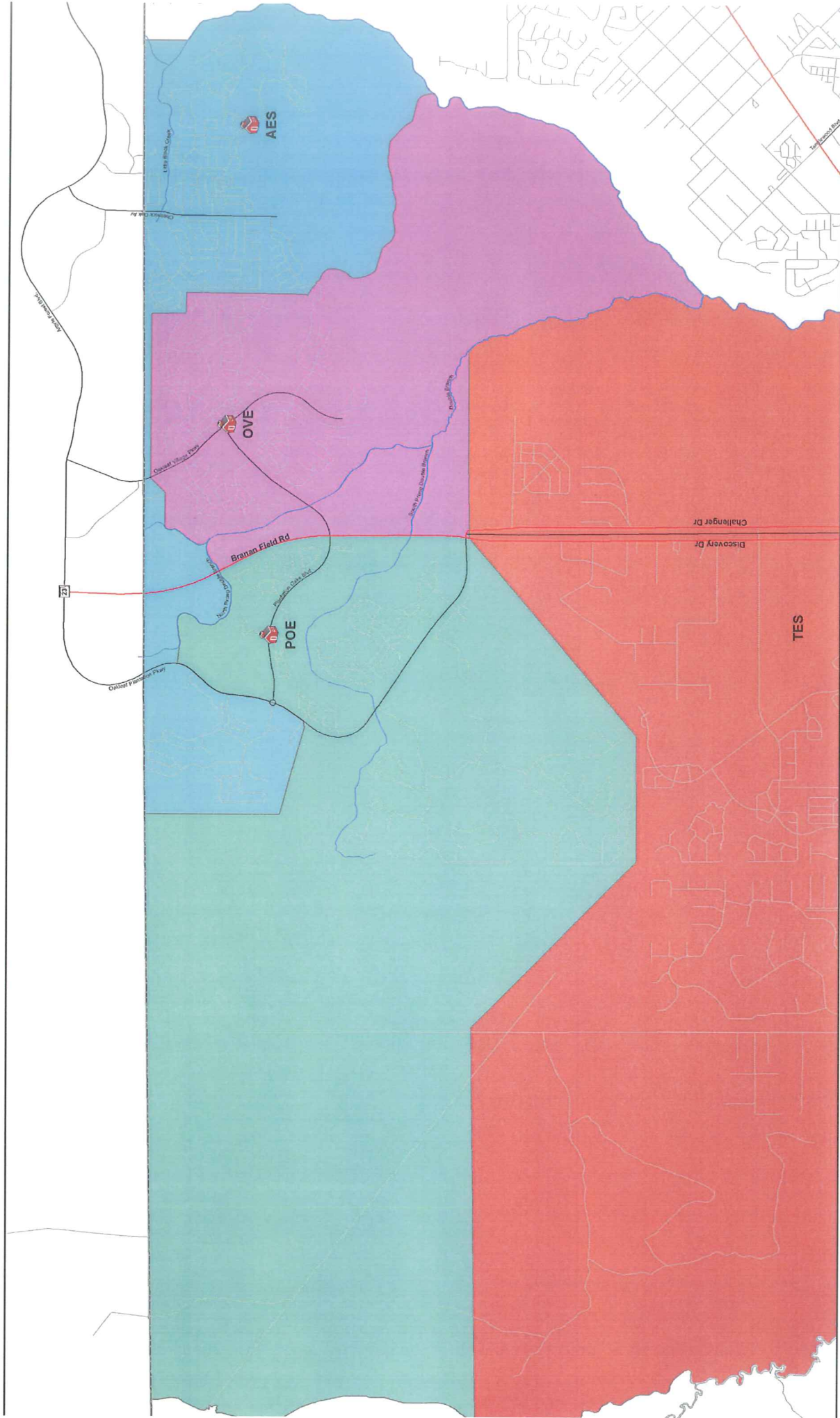


This information is provided as a visual representation only and is not intended to be used as legal or official representation of legal boundaries. The School District of Clay County assumes no responsibility with its use.



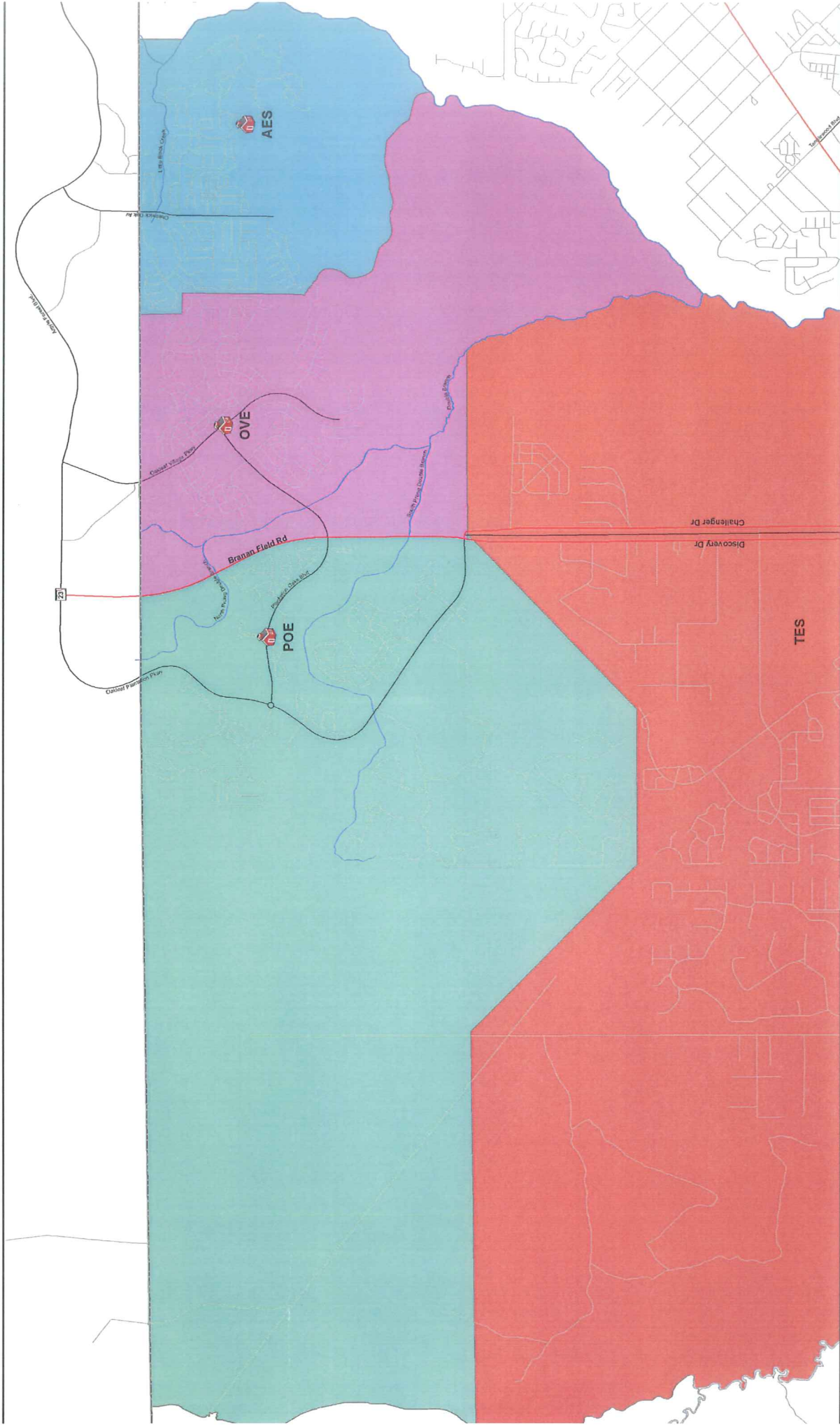
Created By: Planning Department  
Map Prepared: December 2, 2015

# OAKLEAF AREA PROPOSED (A)



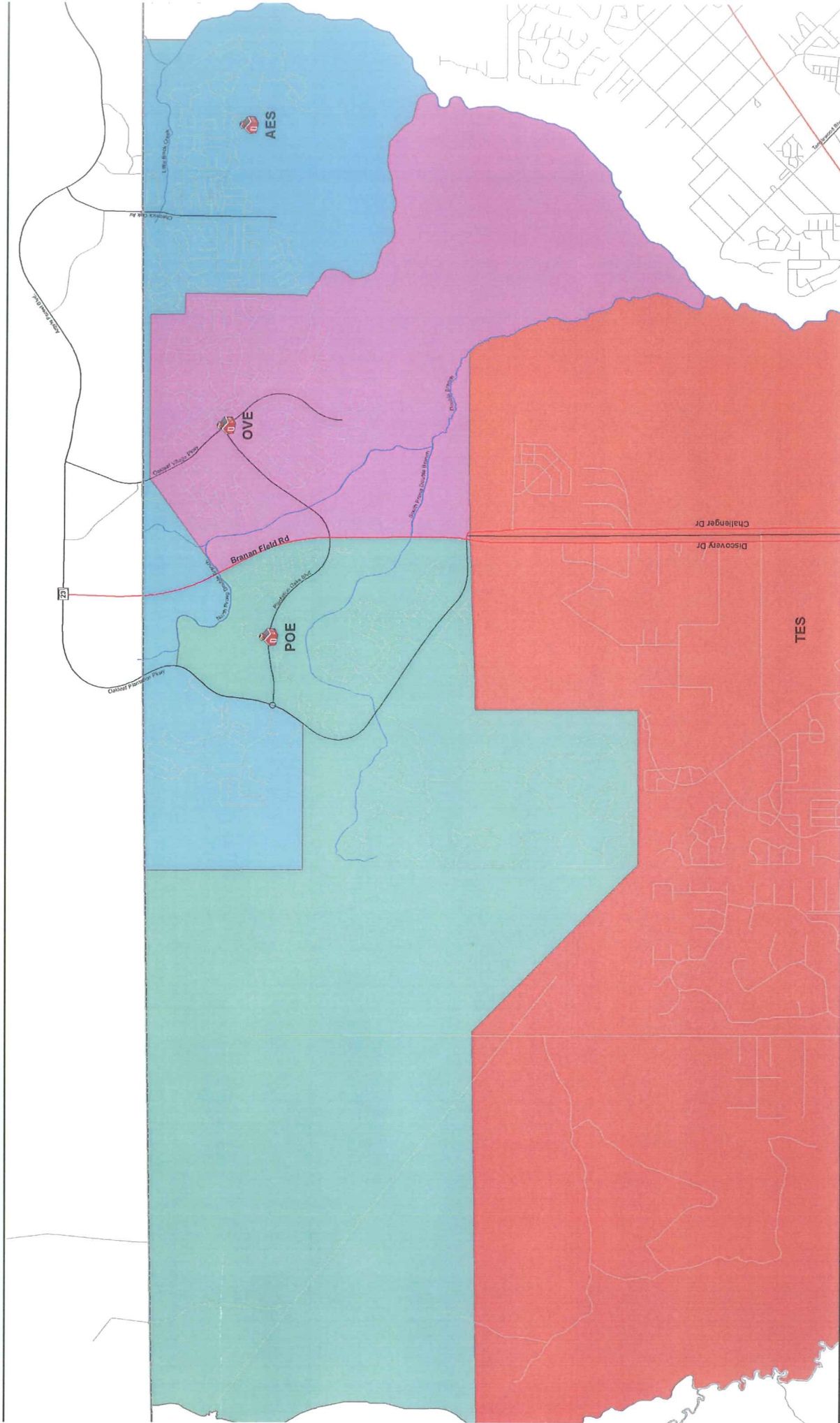
This information is provided as a visual representation only and is not intended to be used as legal or official representation of legal boundaries. The School District of Clay County assumes no responsibility with its use.

# OAKLEAF AREA CURRENT ZONES



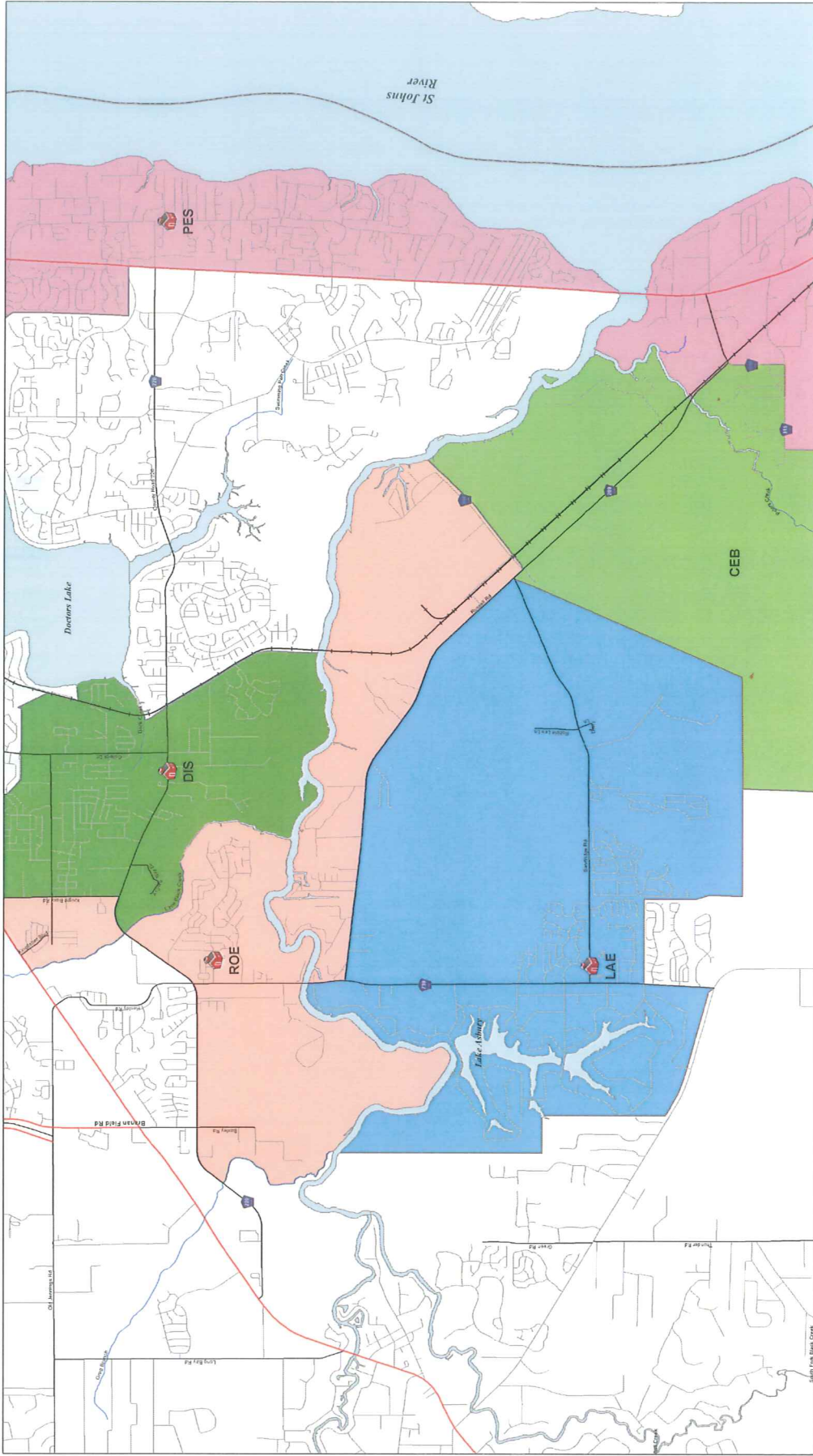
This information is provided as a visual representation only and is not intended to be used as legal or official representation of legal boundaries. The School District of Clay County assumes no responsibility with its use.

# OAKLEAF AREA PROPOSED (B)



This information is provided as a visual representation only and is not intended to be used as legal or official representation of legal boundaries. The School District of Clay County assumes no responsibility with its use.

# ELEMENTARY SCHOOL CURRENT ZONES

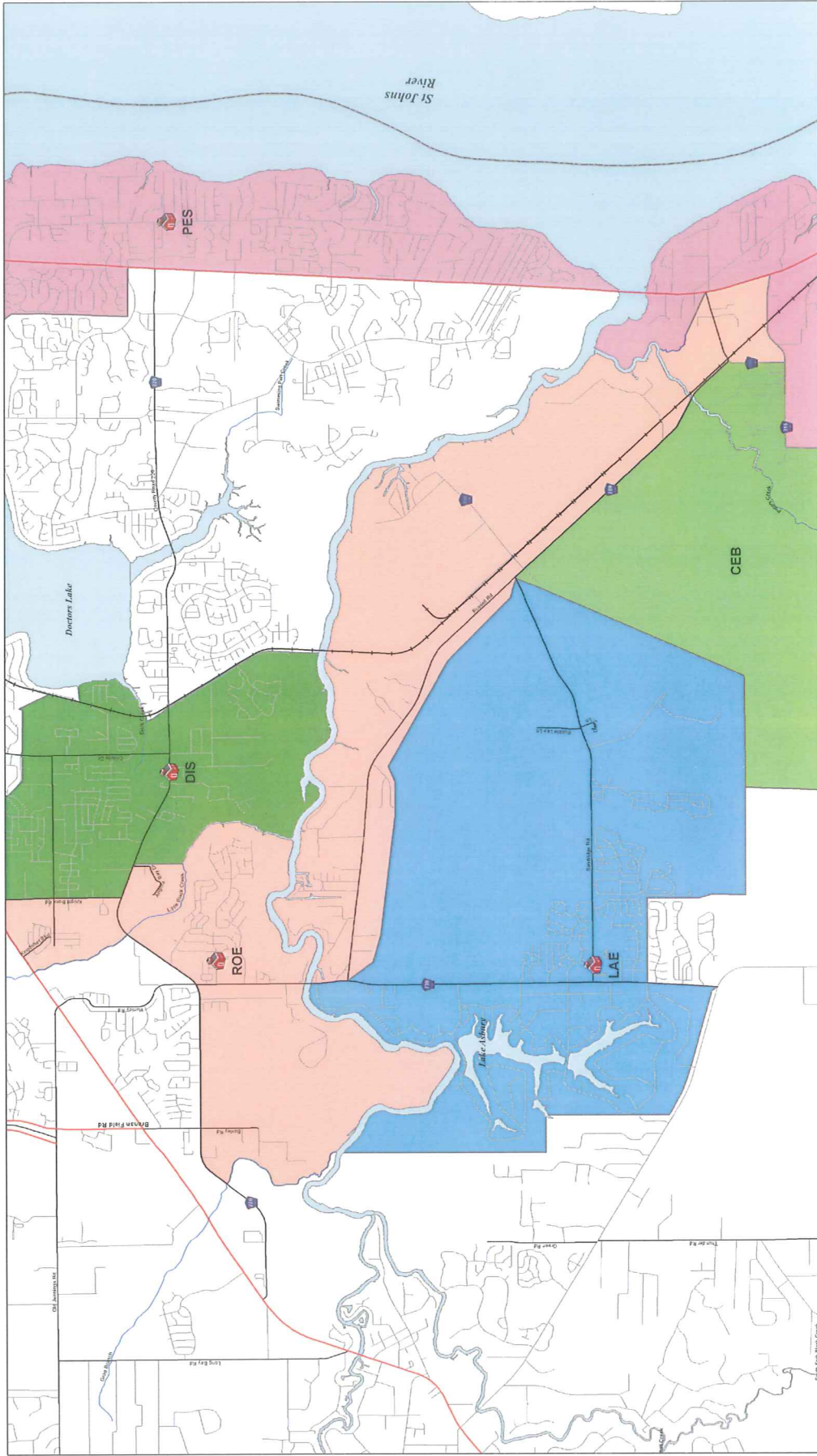


This information is provided as a visual representation only and is not intended to be used as legal or official representation of legal boundaries. The School District of Clay County assumes no responsibility with its use.



Created By: Planning Department  
Map Prepared: December 2, 2015

# ROE - CEB - DIS - LAE - PES PROPOSED

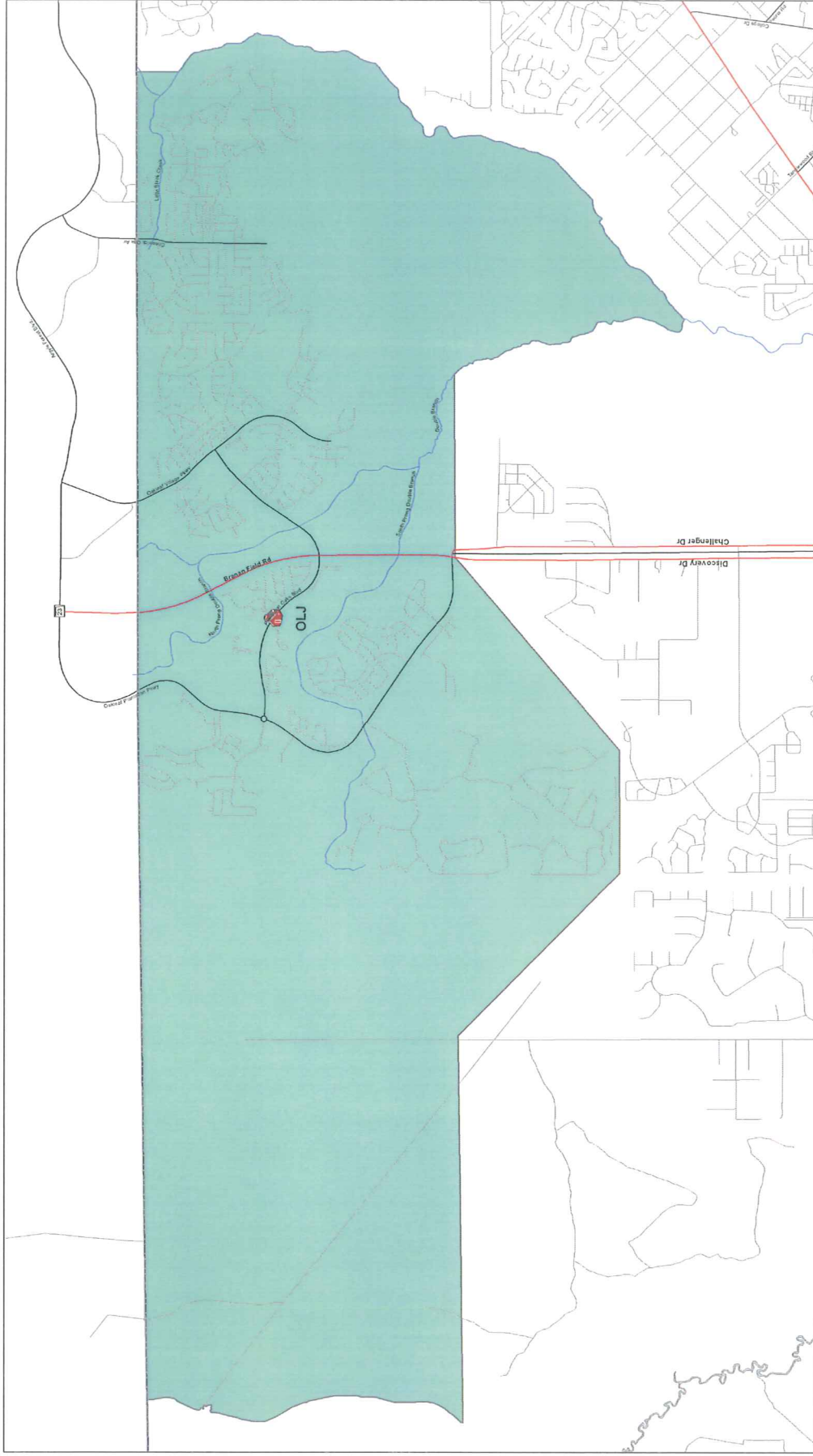


This information is provided as a visual representation only and is not intended to be used as legal or official representation of legal boundaries. The School District of Clay County assumes no responsibility with its use.



Created By: Planning Department  
Map Prepared: December 2, 2015

# OAKLEAF JUNIOR HIGH

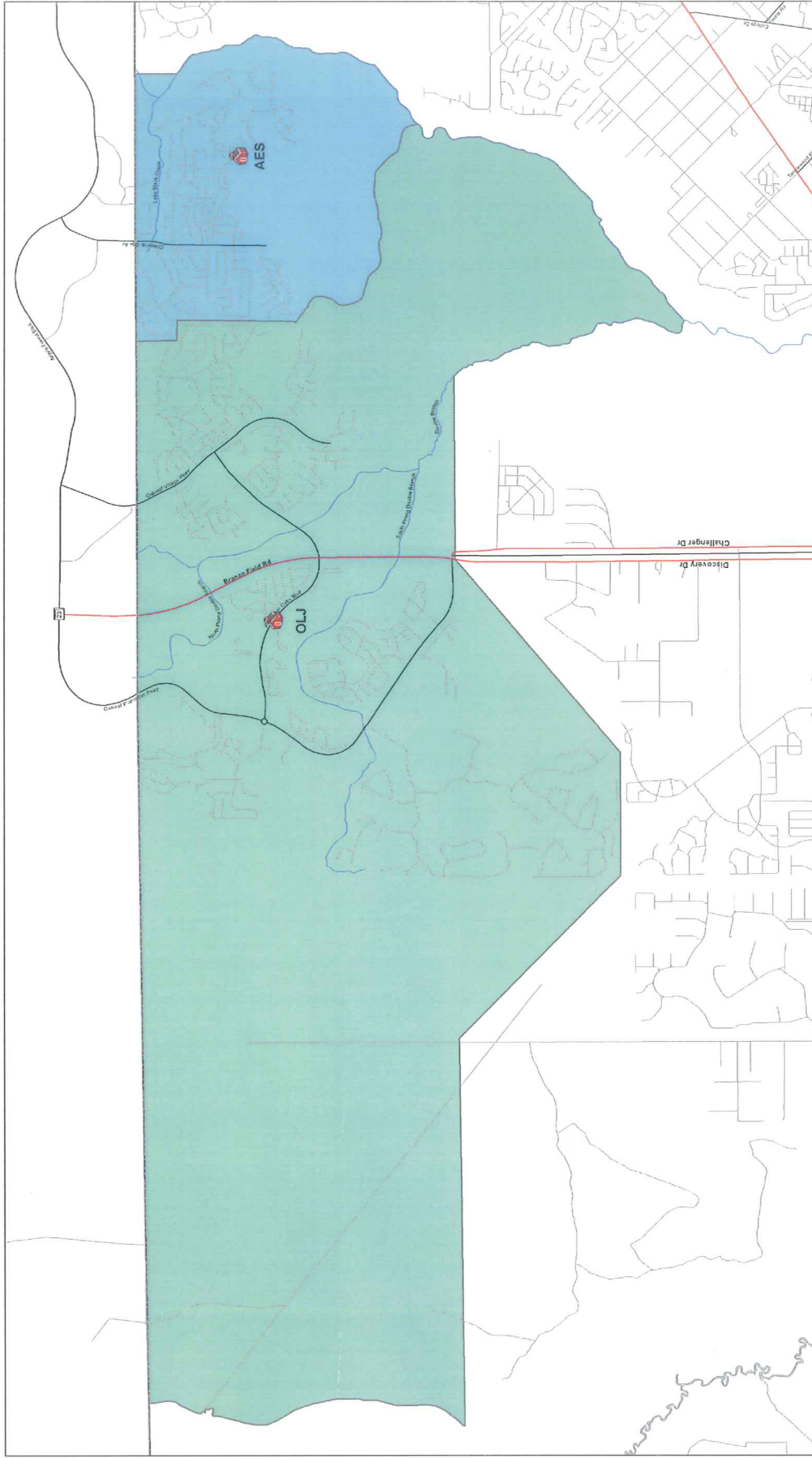


This information is provided as a visual representation only and is not intended to be used as legal or official representation of legal boundaries. The School District of Clay County assumes no responsibility with its use.



Created By: Planning Department  
Map Prepared: December 2, 2015

# OAKLEAF JUNIOR HIGH WITH ARGYLE ELEMENTARY (PK-6)



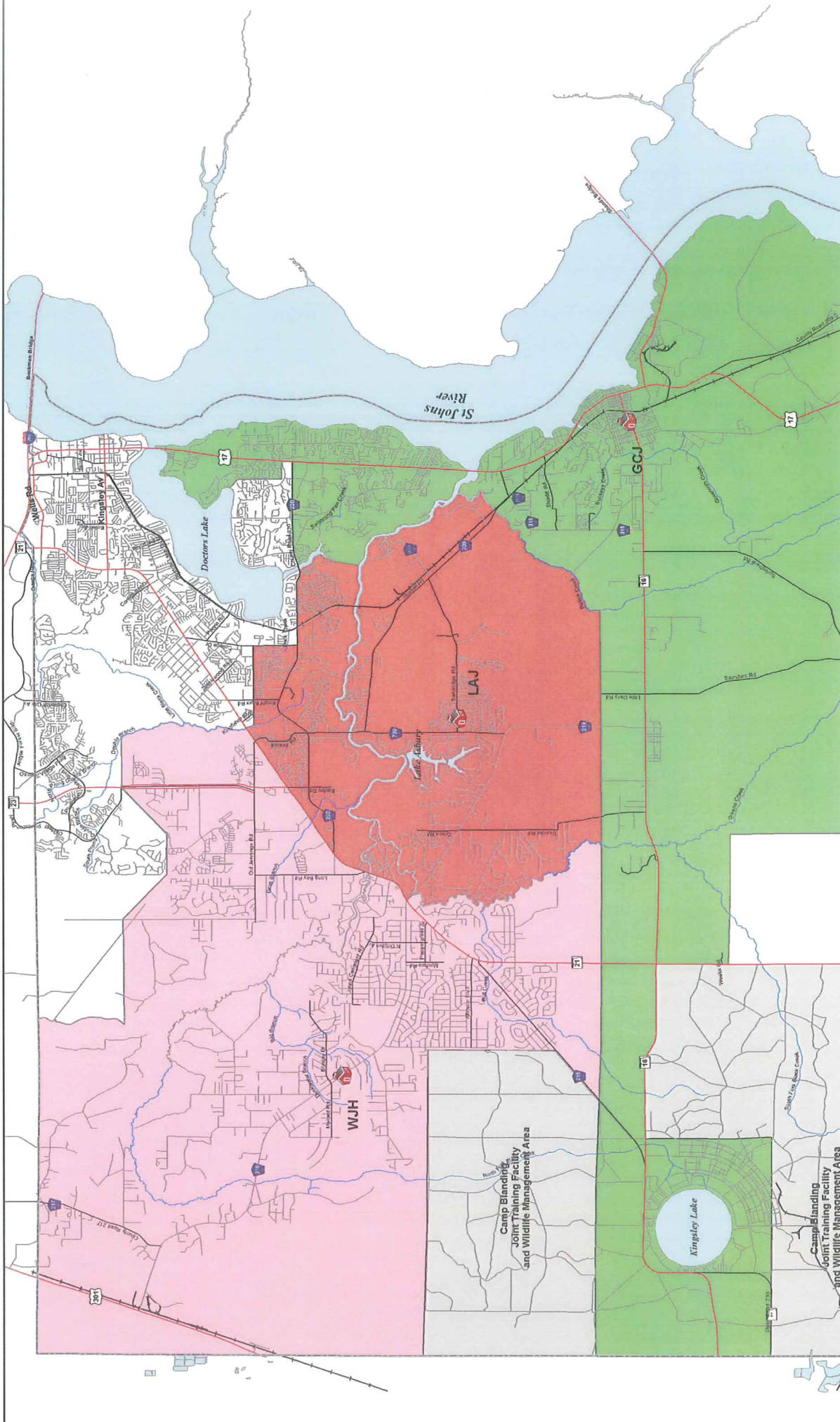
This information is provided as a visual representation only and is not intended to be used as legal or official representation of legal boundaries. The School District of Clay County assumes no responsibility with its use.



Created By: Planning Department  
Map Prepared: December 2, 2015



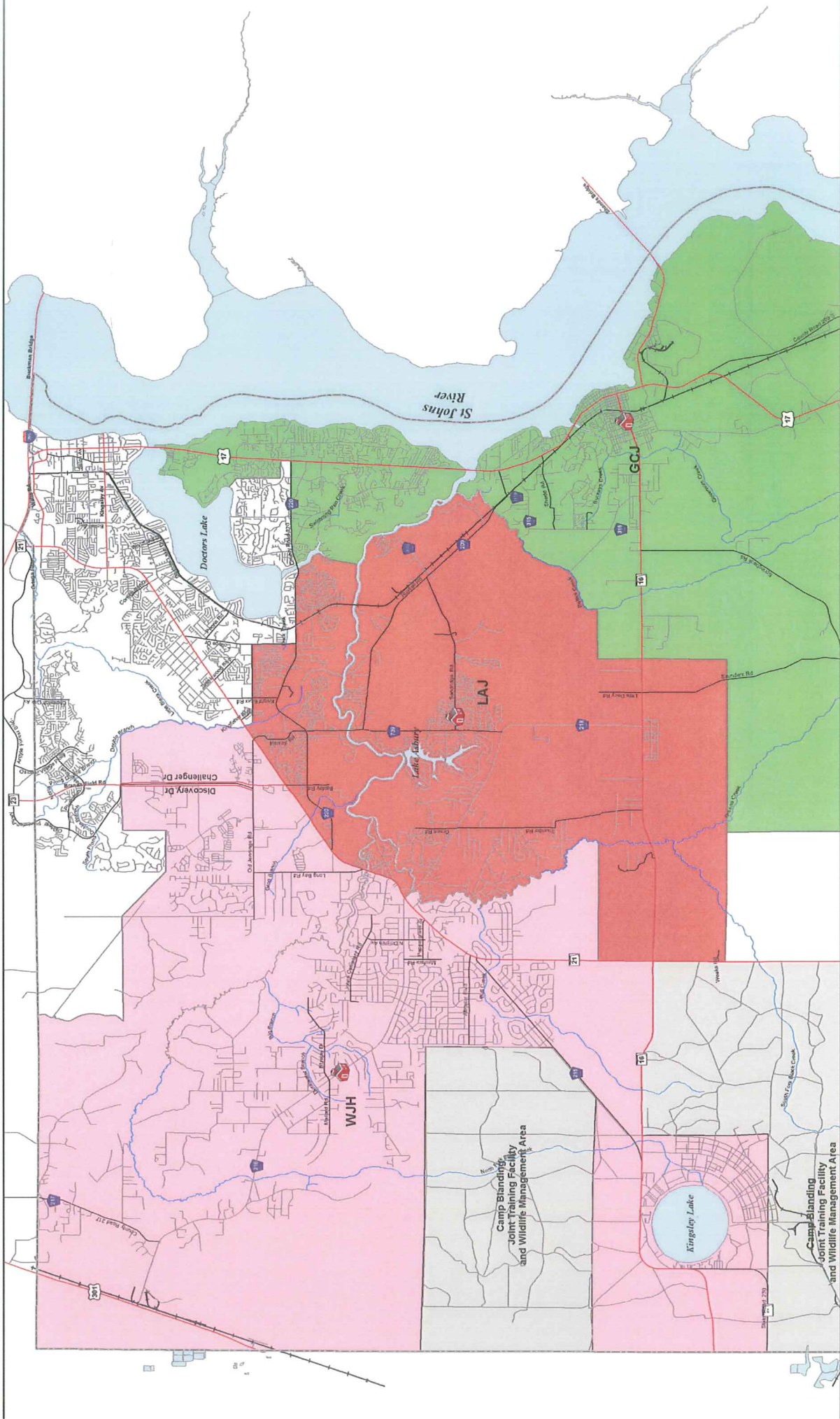
# JUNIOR HIGH SCHOOL CURRENT ZONES



This information is provided as a visual representation only and is not intended to be used as legal or official representation of legal boundaries. The School District of Clay County assumes no responsibility with its use.

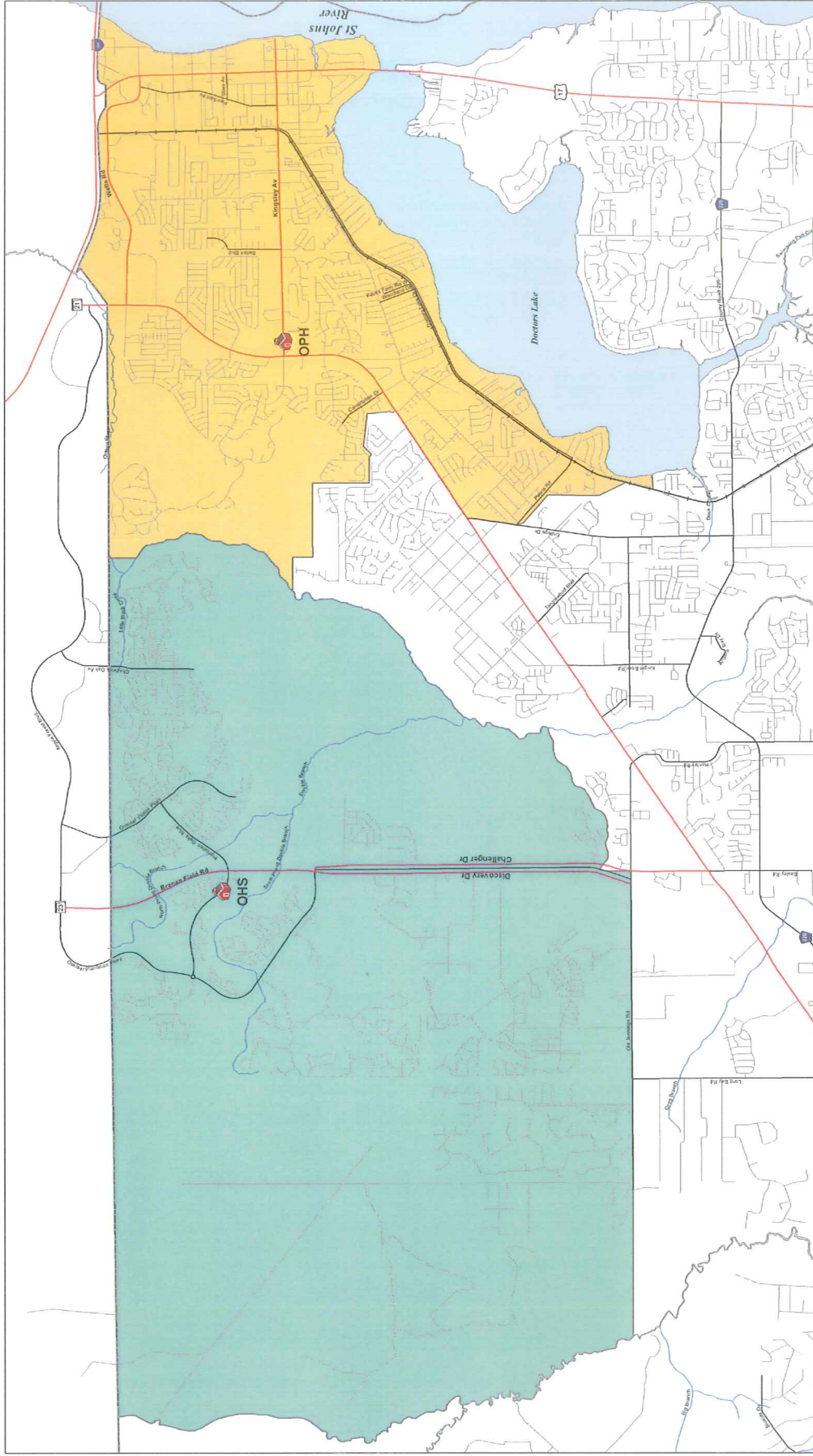


# GCJ TO LAJ & WJH PROPOSED



This information is provided as a visual representation only and is not intended to be used as legal or official representation of legal boundaries. The School District of Clay County assumes no responsibility with its use.

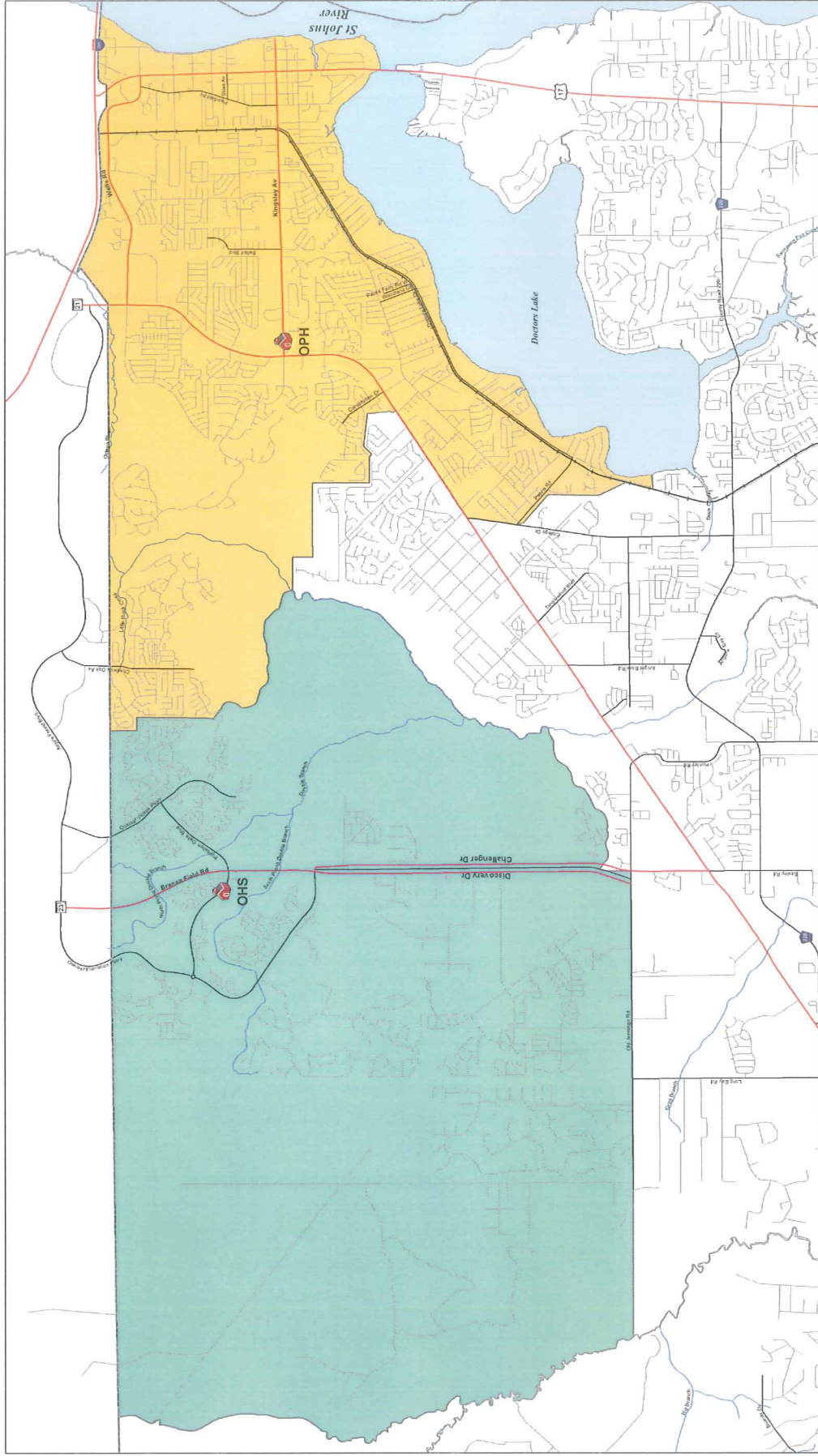
# HIGH SCHOOL CURRENT ZONES



Created By: Planning Department  
Map Prepared: December 2, 2015

This information is provided as a visual representation only and is not intended to be used as legal or official representation of legal boundaries. The School District of Clay County assumes no responsibility with its use.

# HIGH SCHOOL PROPOSED

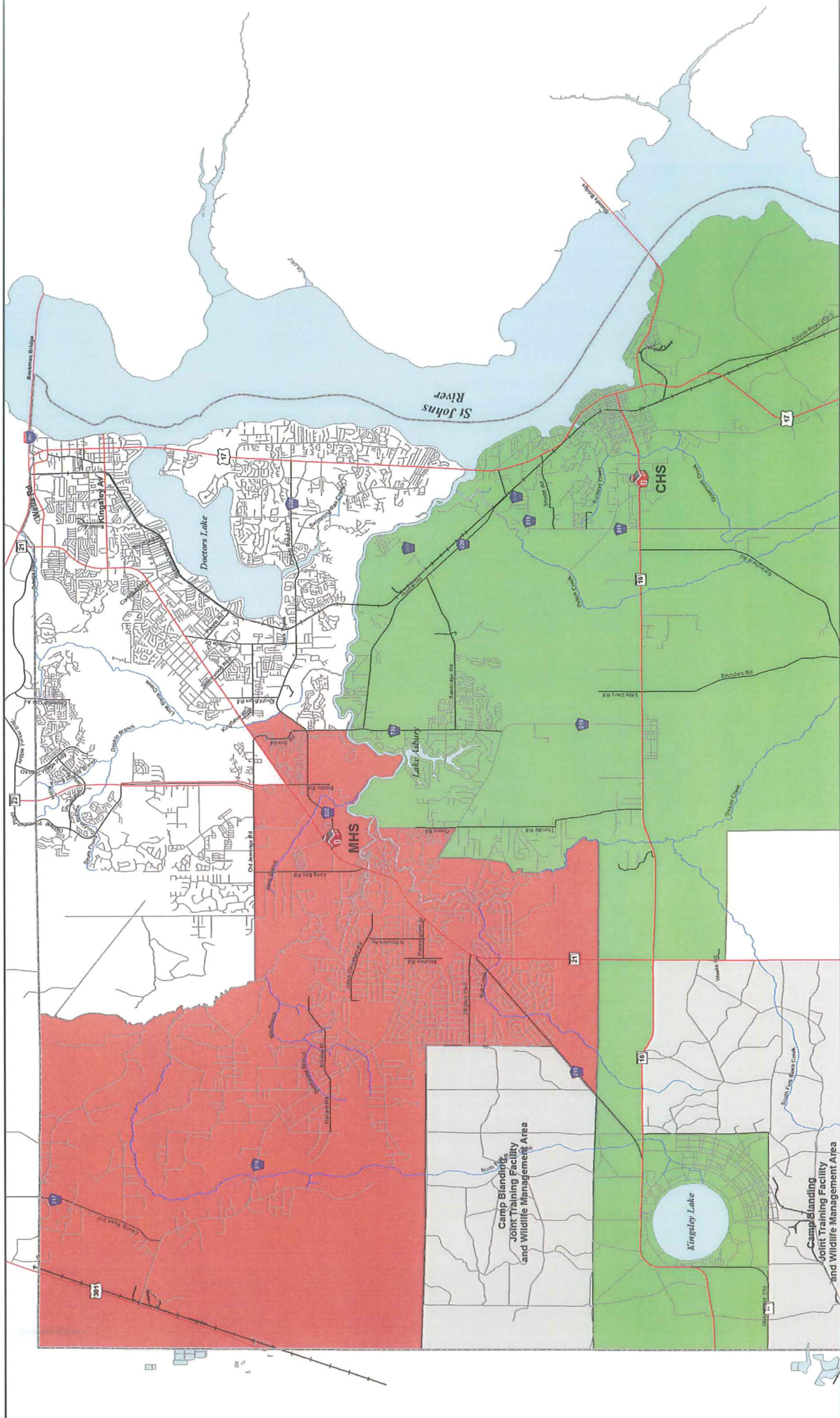


This information is provided as a visual representation only and is not intended to be used as legal or official representation of legal boundaries. The School District of Clay County assumes no responsibility with its use.



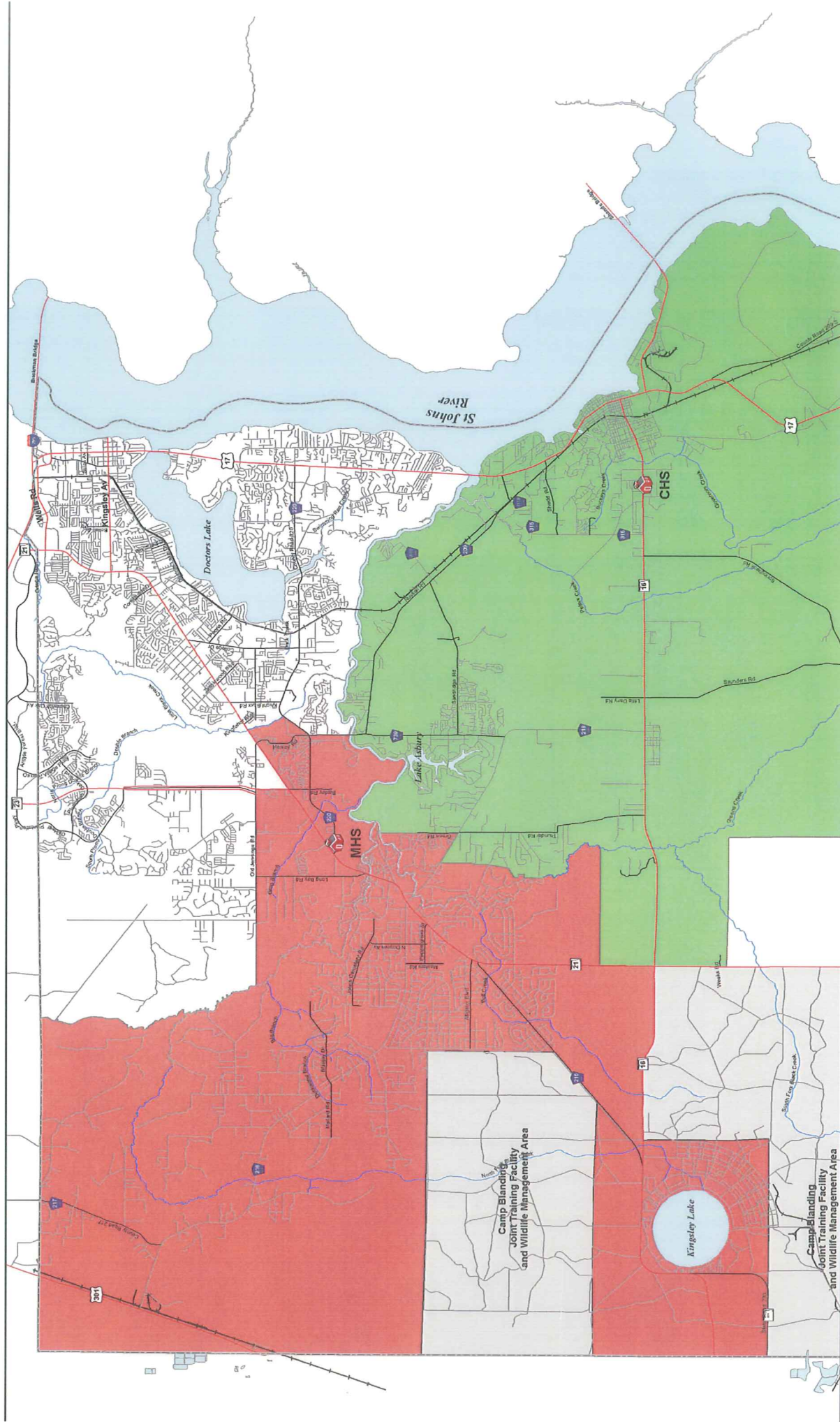
Created By: Planning Department  
Map Prepared: December 2, 2015

# CHS - MHS CURRENT ZONES



This information is provided as a visual representation only and is not intended to be used as legal or official representation of legal boundaries. The School District of Clay County assumes no responsibility with its use.

# CHS TO MHS PROPOSED



This information is provided as a visual representation only and is not intended to be used as legal or official representation of legal boundaries. The School District of Clay County assumes no responsibility with its use.

