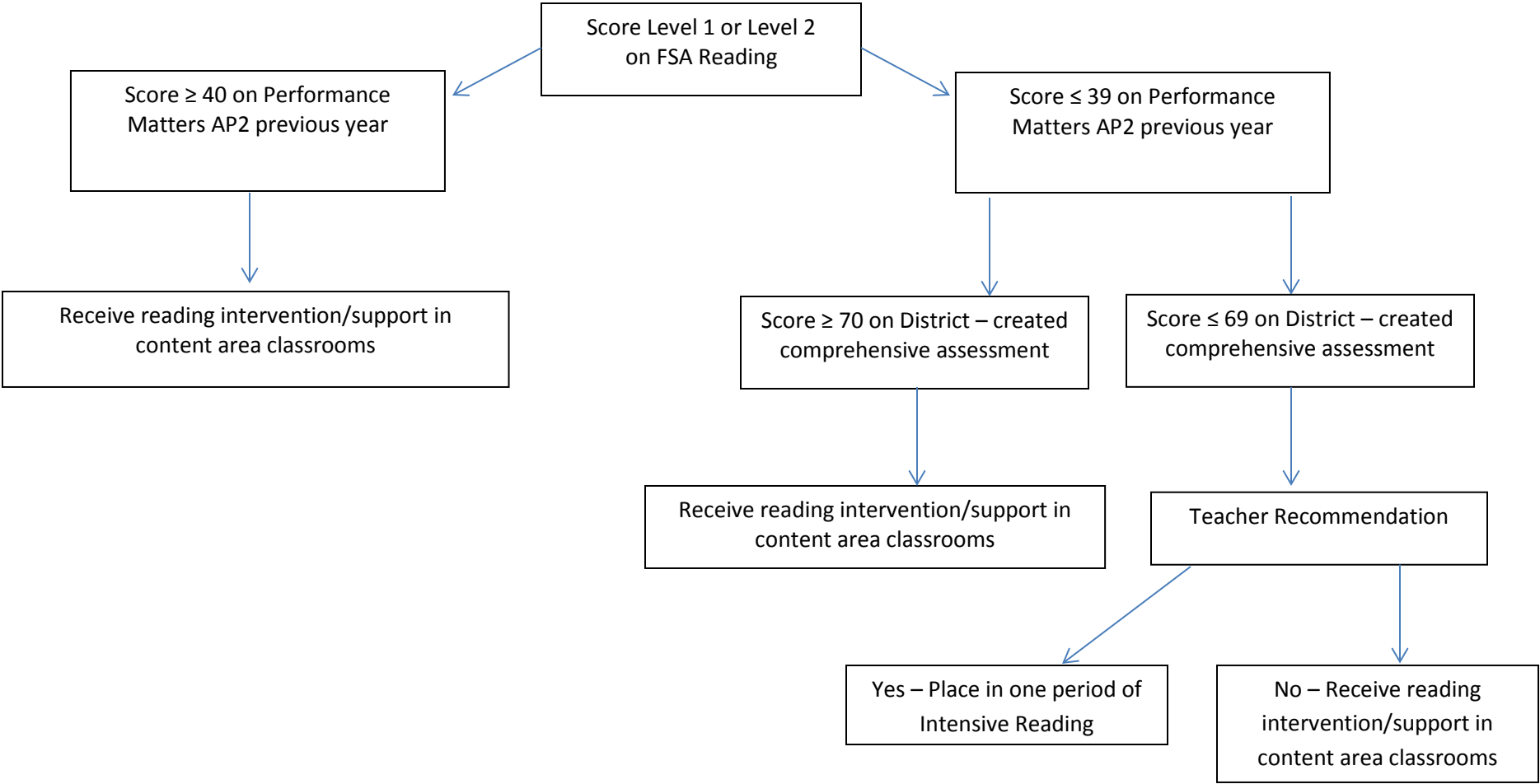


**Clay County School District  
Instructional Decision Tree  
Grades 7 - 10**



**Clay County School District  
Instructional Decision Tree  
Grades 11 - 12**

11<sup>th</sup> and 12<sup>th</sup> grade students  
not yet meeting reading  
requirements for graduation

Place in one period of  
Intensive Reading

Earn concordant score or  
pass retake

No passing concordant score  
or no passing score on  
retake

Exit Intensive Reading at  
end of semester

Continues in Intensive  
Reading until receives a  
passing score