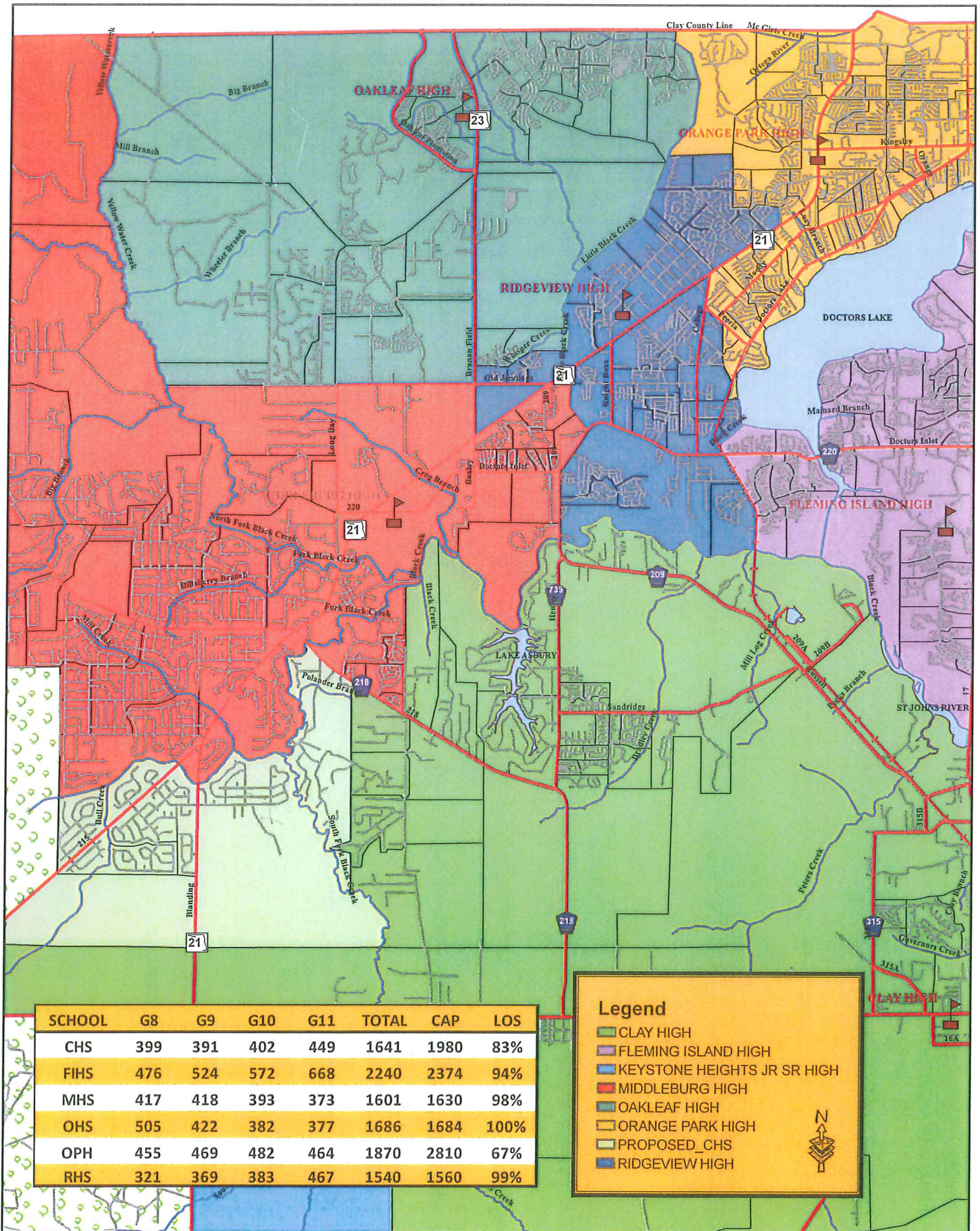



# CONCEPT\_2\_OHS\_1011



SCHOOL	G8	G9	G10	G11	TOTAL	CAP	LOS
CHS	399	391	402	449	1641	1980	83%
FIHS	476	524	572	668	2240	2374	94%
MHS	417	418	393	373	1601	1630	98%
OHS	505	422	382	377	1686	1684	100%
OPH	455	469	482	464	1870	2810	67%
RHS	321	369	383	467	1540	1560	99%

**Legend**

- CLAY HIGH
- FLEMING ISLAND HIGH
- KEYSTONE HEIGHTS JR SR HIGH
- MIDDLEBURG HIGH
- OAKLEAF HIGH
- ORANGE PARK HIGH
- PROPOSED\_CHS
- RIDGEVIEW HIGH



# Concept \_02\_OHS\_1011

## Notes for overall redistricting:

- Student numbers based on where a student resides within the School District
- Student numbers do not account for Home Schools or Special Pupil Assignments (SPRs)
- Student numbers do not account for Vocational Academies assignments
- Major state park; large land mass within Concurrency Service Area (CSA)

## OHS Boundaries:

- Beginning at the intersection of the centerline of Yellow Water Creek and the northern boundary of Clay County being in Section 32, Township 3 South, Range 24 East, for a point of beginning; thence southerly along the centerline of Yellow Water Creek to the intersection of the centerline of North Fork Black Creek; thence along the centerline of North Fork Black Creek in a southeasterly direction to a point on the south boundary of Section 28, Township 4 South, Range 24 East; thence east along the section line to the centerline of Old Jennings Road; thence east along the centerline of Old Jennings Road to a point of intersection with the centerline of Branan Field Road; thence north along the centerline of Branan Field Road to a point of intersection with Whisper Creek; thence easterly along the centerline of Whisper Creek to a point of intersection with the centerline of Little Black Creek; thence northerly along the centerline of Little Black Creek to the intersection of the eastern boundary of Section 3, Township 4 South, Range 25 East; thence north along the eastern boundary to the eastern boundary of Section 34, Township 4 South, Range 25 East; thence north along the section line until it intersects with the northern boundary of Clay County; thence west along the northern boundary of Clay County to the point of beginning.

## MHS/RHS boundary changes:

- Remain as in Concept 01

## MHS/CHS boundary changes:

- Move approx 179 students from MHS to CHS.
- From the intersection of County Road 218 and the centerline of South Fork Black Creek; thence in a southwesterly direction along the centerline of South Fork Black Creek to a point of intersection of the centerline of Bull Creek; thence westerly along the centerline of Bull Creek until it intersects with the centerline of Section 30, Township 5 South, Range 24 East (the eastern boundary of Camp Blanding); thence south along the section line to the intersection of the centerline of County Road 215; thence in a southwesterly direction along the centerline of County Road 215 until it intersects with the centerline of the southwest corner of Section 6, Township 5 South, Range 24 East; thence east along the centerline of the section line until it intersects with the centerline of South Fork Black Creek; thence north along the centerline of

South Fork Black Creek until it intersects with the centerline of County Road 218 which is the point of beginning.

**High Schools with Level Of Service (LOS) Affected:**

- RHS from a LOS of 104% to 99% (max LOS is 110% for all schools)
- MHS from a LOS of 133% to 98%
- OPH from a LOS capacity of 105% to 67%
- OHS opens with 100%
- CHS from a LOS capacity of 71% to 83%

**Positives:**

- Neighborhoods remain intact
- Use of natural boundaries for OHS (CSA)
- Reduces MHS LOS to 98% allowing for potential growth
- CHS boundary already extends to the Kingsley Lake area
- Increases CHS student numbers

**Negatives:**

- Bus Routes could be conceived as unreasonable in length and time to CHS from CR 218 (Approx. 18/20 miles to CHS)

Student Capacity For "Concept 02" 2009/10 thru SY 2014/15 (Based on DOE 2009 COFTE)

School Code	SCHOOL NAME	Total FISH Capacity	Core (Cafeteria + multipurpose area)	FISH or Core Cap. (lesser of)	SY 10/11		SY 11/12		SY 12/13		SY 13/14		SY 14/15	
					CCSD Projected Enroll.	FISH or Core Capacity (lesser of)	Util.	COFTE Enroll.	FISH or Core Capacity (lesser of)	Util.	COFTE Enroll.	FISH or Core Capacity (lesser of)	Util.	COFTE Enroll.

**High School 2009-13**

CHS	Clay High	1980	2170	1980	1641	1980	83%	1519	1980	77%	1510	1980	76%	1516	1980	77%	1528	1980	77%
FIH	Fleming Island High	2374	2480	2374	2240	2374	94%	2073	2374	87%	2062	2374	87%	2070	2374	87%	2086	2374	88%
MHS	Middleburg High	2468	1630	1630	1601	1630	98%	1482	1630	91%	1473	1630	90%	1479	1630	91%	1491	1630	91%
OPH	Orange Park High	3232	2810	2810	1870	2810	67%	1731	2810	62%	1721	2810	61%	1728	2810	61%	1742	2810	62%
RHS	Ridgeweew High	2627	1560	1560	1540	1560	99%	1425	1560	91%	1417	1560	91%	1423	1560	91%	1434	1560	92%
OHS	Oakleaf High School (QCC)	1684	2250	1684	1688	1684	100%	1560	1684	93%	1552	1684	92%	1558	1684	93%	1570	1684	93%
<b>Combination / Other 2009-13</b>		<b>14365</b>	<b>12900</b>	<b>12038</b>	<b>10578</b>	<b>12038</b>	<b>88%</b>	<b>9790</b>	<b>12038</b>	<b>81%</b>	<b>9735</b>	<b>12038</b>	<b>81%</b>	<b>9774</b>	<b>12038</b>	<b>81%</b>	<b>9851</b>	<b>12038</b>	<b>82%</b>

BLC	Banneman Learning Center	526	330	330		330	0%		330	0%		330	0%		330	0%		330	0%
KHHS	Keystone Heights High (7-12)	1458	2130	1458	764	1458	52%	707	1458	48%	760	1458	52%	767	1458	53%	773	1458	53%
<b>Total:</b>		<b>1984</b>	<b>2460</b>	<b>1788</b>	<b>764</b>	<b>1788</b>	<b>43%</b>	<b>707</b>	<b>1788</b>	<b>40%</b>	<b>760</b>	<b>1788</b>	<b>43%</b>	<b>767</b>	<b>1788</b>	<b>43%</b>	<b>773</b>	<b>1788</b>	<b>43%</b>
<b>Student Total:</b>					<b>11342</b>			<b>10497</b>			<b>10495</b>			<b>10541</b>			<b>10624</b>		
<b>DOE Capital Outlay FTE Forecast (COFTE):</b>					<b>10824</b>			<b>10496</b>			<b>10495</b>			<b>10540</b>			<b>10625</b>		

111222343	Indicates new student number
111222343	LOS Exceeds 100%
11122234	LOS Exceeds 110%
11122234	Indicates New Capacity